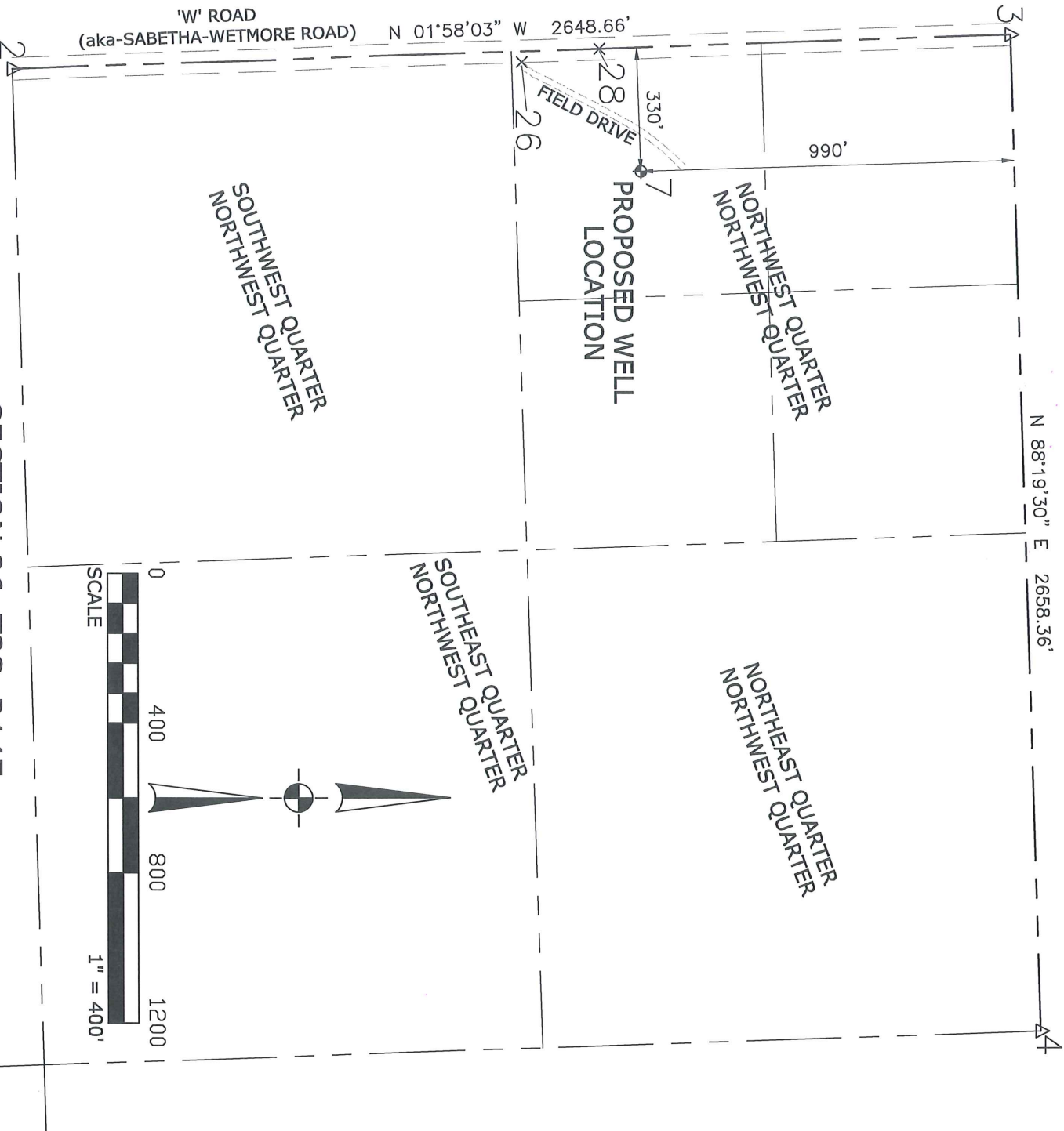
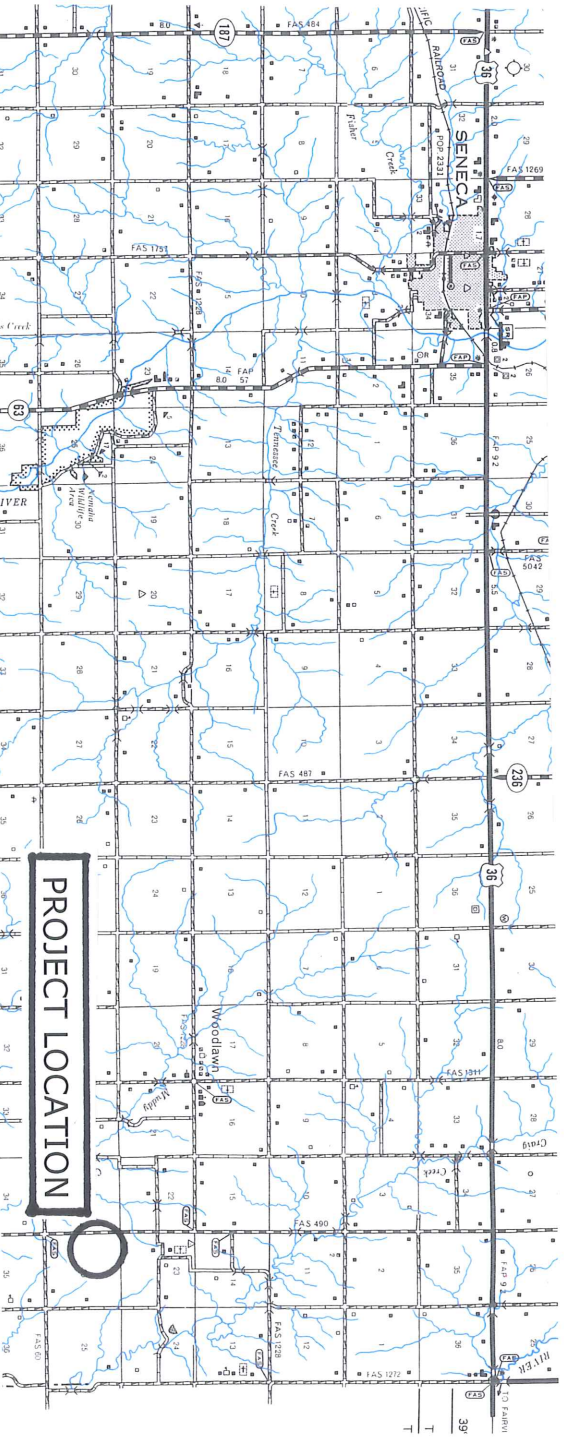


WELL LOCATION SURVEY MEYER #11-26 NEMAHA COUNTY, KANSAS



Pt.	Northing	Easting	Elevation	Description	Latitude	Longitude
2	527612.71	1923248.78	1240.75	PF 1/2" BAR	39d45'42.50273"	95d49'36.27908"
3	530259.81	1923157.84	1282.18	PF 1/2" BAR	39d46'08.67745"	95d49'36.62983"
4	530337.51	1925815.06	1300.66	PS 5/8" BAR W/CAP	39d46'08.81361"	95d49'02.58563"
7	529280.08	1923521.67	1273	PROPOSED WELL	39d45'58.91146"	95d49'32.27293"
8	529280.08	1923521.67	1275.41	PS 7	39d45'58.91146"	95d49'32.27293"
26	528963.69	1923230.95	1281.09	TW FLID ENT	39d45'55.85453"	95d49'36.09209"
28	529169.95	1923193.83	1285.95	CHREST OF HILL	39d45'57.90121"	95d49'36.50401"

ALL COORDINATES ARE STATE PLANE - KANSAS NORTH



Date
10/24/2013
Scale
1" = 400'
Sheet No.
1-OF-1
Project No.
98537

PREPARED FOR:
Evertson Operating Company Inc.
621 17th St., Suite 630
Denver, Colorado 80293

F ORCE
L AND
S URVEYING

PREPARED BY
TERRY FORCE, RLS
342 MAIN STREET
WHEATON, KANSAS 66521

Phone:
785-396-4480
Email:
tforce@bluevalley.net