

Randall Kilian Corporation
Geologist



**Certified Petroleum
Geologist #3351
License #224**

P.O. Box 26
Hays, Kansas 67601-0026
Phone: 785-628-6061
Cell: 785-635-1349

GEOLOGIST'S WELL REPORT

COMPANY LD DRILLING, INC. (6039)

WELL Applebee-Schlessinger Cattle #3

FIELD Hall-Gurney

LOCATION (legal) Ap. NE NW SW NE
(1500' FNL & 2040' FEL)
Section 21 TWP 15S RGE 12W

(Map) 7 mi N of Beaver, Ks.

COUNTY Russell STATE Kansas

ELEVATION: 1852' K.B., 1847' G.L.

Depths measured from Kelly Bushing

A. P. I. NUMBER 15-167-23894

GEOLOGY BY Randall Kilian

PERTINENT WELL DATA

CONTRACTOR Petromark Drilling, LLC (33323)

RIG #2 HYDRAULICS D-375 6x14x60
(Jim Mickle TP)

DRILL PIPE 4 1/2" X-H COLLARS 6 1/2" 14 (456')

CASING: SURFACE 8 5/8" @ 377' w/ 275 sx 60/40 Poz

PRODUCTION 5 1/2" @ 3370' w/ 150 sx Common

DRILLING FLUID: COMPANY Andy's Mud & Chemical Co.
(Dennis Rector)
TYPE: Chemical

REMARKS: Full service

DRILL STEM TESTS: COMPANY Diamond Testing
(Mike Cochran)

NUMBER OF TESTS Four (4)

ELECTIC LOGS: COMPANY Nabors Services Co.

DETAIL (5") 2600' - RTD

TYPE DI, Comp N-D, Micro

DRILLING TIME FROM 2600' TO RTD

SAMPLE TIME FROM 2600' TO RTD

SUPERVISION FROM 2600' TO RTD

VERTICAL DEVIATION 3/4" @ 387', 3/4" @ 2945',
3/4" @ 3375'

PLUGGING REPORT 30 sx Rat

RESERVE PIT 600 bbls., Chl. 81,000 Ga. 880

DAILY REPORT

DATE: 7 a.m. Depth RIG ACTIVITY

8-29-13 MIRB. Spu

8-30-13 387' WOC

8-31-13 1527' Drilling

9-01-13 2521' Drilling

9-02-13 2945' DST #1 TC

9-03-13 3145' Drilling

9-04-13 3280' DST #A

9-05-13 3375' TD, Logge

DRILL STEM TESTS

NO	INTERVAL	IFP/TIME	ISIP/TIME	FFP/TIME	FSIP/TIME	IHP/FHP	RECOVERY
1	Toronto 2911- 2945'	5# 7# 5"	149# 60"	8# 25# 30"	41# 30"	1349# 1336#	10' Mud
2	LKc A-C 3007- 3075'	15# 18# 5"	662# 60"	23# 49# 60"	618# 90"	1403# 1400#	240' GIP 70' G,Mud w/ s.o.
3	LKc G-J 3110- 3210'	11# 100# 45"	711# 45"	103# 154# 45"	710# 60"	1478# 1476#	495' GIP 80' G,H,O,C,W,Mud 245' G.Sl.O.C.M.Wtr
4	3238- 3280'	9# 10# 5"	363# 30"	6# 8# 30"	95# 30"	1559# 1556#	1' Oil 36° 1' O,C,Mud
5							
6							
7							
8							

MUD RECORD											
CHK	DEPTH	WT	VIS	FIL	CHL	YP					
1	2530'										
2	2536'	8.6	64	8.8	1k	20					
3	2775'	8.8	52								
4	2980'	8.9	54								
5	3009'	9.0	56	8.8	5k	25					
6	3130'	9.0	54								
7	3155'	9.1	54	9.2	5k	21					
8	3280'	9.4	54	10.4	7k	25					
9	3340'	9.1	51								
10											
11											

Displaced

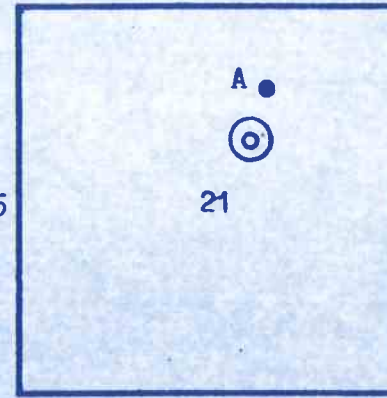
\$5851.
add hulls

BIT RECORD

NO	SIZE	MAKE	TYPE	DEPTH	FEET	HOURS
1	12 1/4"	JZ	RR	387'	387'	4 1/2
2	7 7/8"	ETCO.	Gx20C	3375'	2988'	68
3						
4						
5						
6						
7						

FORMATION TOPS & STRUCTURAL GEOLOGY

R 12 W



REFERRED TO:

- A: LD DRILLING, INC.
 B: SCHLESSIGER Cattle Co. #1 SE NW NE
 C: _____
 D: _____
 E: _____

STRATIGRAPHIC MARKERS	SUBJECT WELL		STRUCTURAL POSITION					
	SAMPLE	E. LOG	DATUM	A	B	C	D	E
Anhydrite	754'	754'	+1098	+1100				
Base	782'	782'	+1070	+1072				
Topeka	2634'	2634'	- 782	- 777				
Heeb. Sh.	2913'	2914'	-1062	-1057				
Toronto	2930'	2930'	-1078	-1074				
Brown Im.	3000'	3000'	-1148	-1145				
Lansing	3013'	3013'	-1161	-1157				
BKc.	3270'	3268'	-1416	-1408				
Arbuckle	3285'	3285'	-1433	-1425				
TD	3375'	3375'	-1523	-1492				

Pipe strap 1.41' short.

*Structural position of subject well as compared to referred well.

The Applebee-Schlessig
with Petromark Drilling
29, 2013 and drilling

The development well
seismic survey.

The well ran 2-8' low
but 7-21' high to near
encountered in several
with mixed results on
was over a 5' dolomite

The upper Arbuckle was
nearby producers. The
remaining if not depleted
producers.

Recommended perms: Ar
G

Respectfully,

Randall Kilian
Randall Kilian

SUMMARY

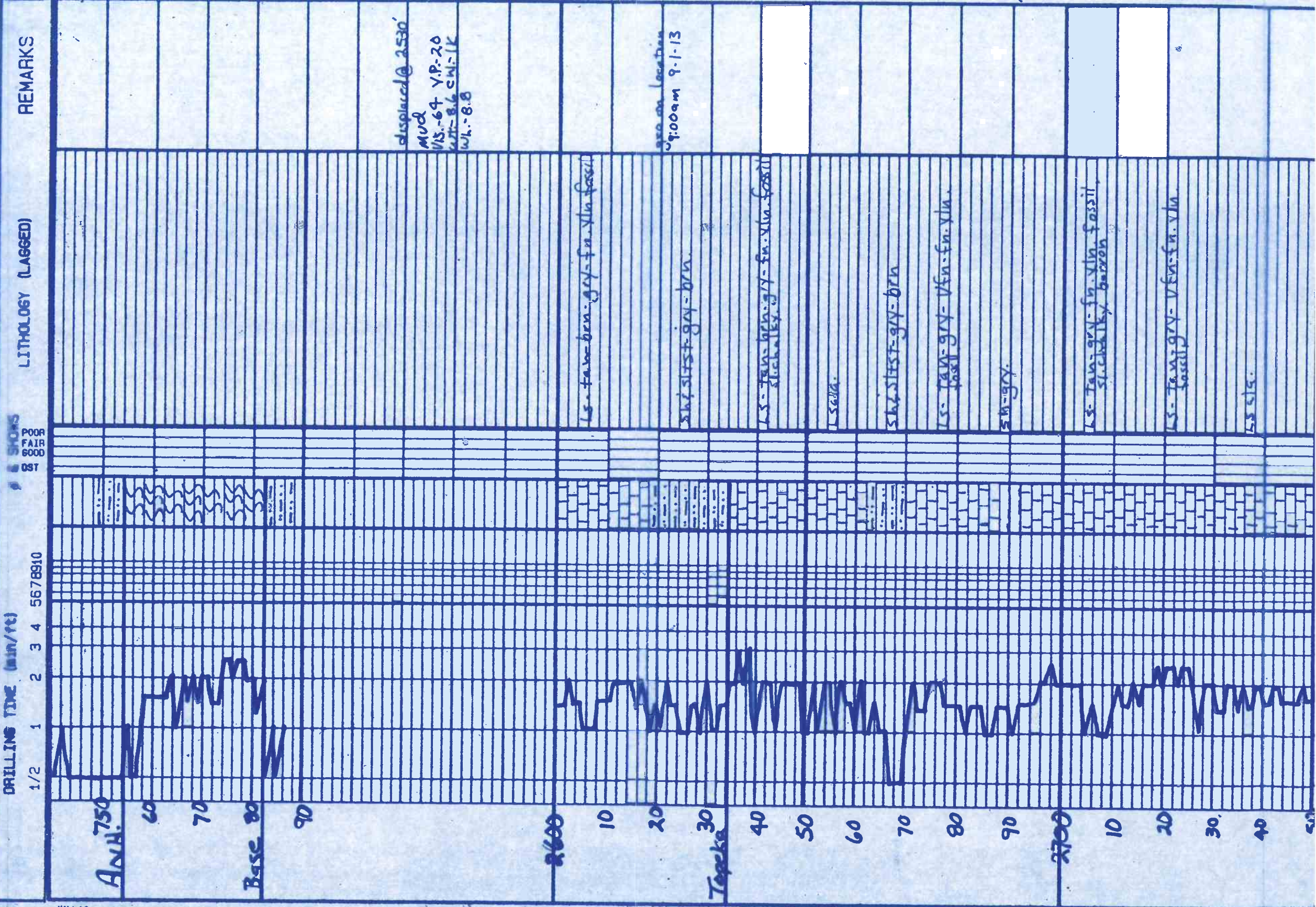
Per Cattle #3 well was drilled using tools rig #2 beginning August and was completed September 5, 2013.

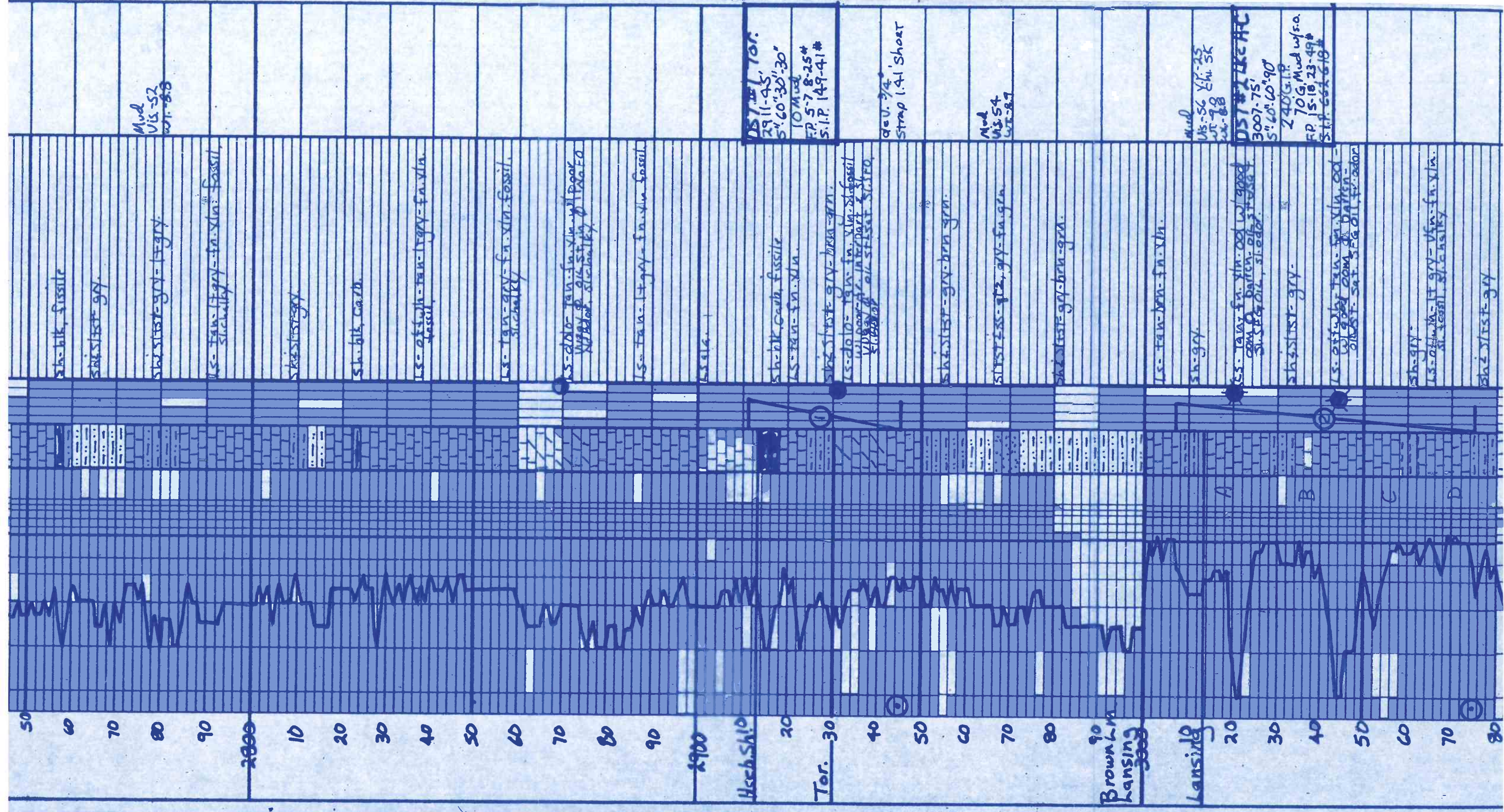
Site was located via a 3-D

structurally to the #1 well nearby wells. Oil shows were in all zones. Three DST's were run over the Toronto and LKc DST #4 and all were negative.

Pressure is 8' low to #1 but higher than #2 therefore oil reserves may be affected by nearby abandoned

Wellbore: 3292-93', LKc H 3154-56', C 3106-08', C 3041-43'





LS- offwh- tan- fn. xln. oil w/ fr. good amount of barite. silty chalky

sh- dark gray

LS- offwh- tan- fn. xln. oil w/ fr. good amount of barite. silty chalky

LS- tan- fn. xln. oil w/ fr. good amount of barite. silty chalky

sh- dark gray- blk.

sh- siltst- gray- green- brown- soft

LS- tan- fn. xln. oil w/ barite. siltst- fr. odor.

sh- siltst- gray- brown.

LS- offwh- tan- fn. xln. fossil w/ good amount of barite. silty

sh- gray- brown.

LS- offwh- tan- fn. xln. oil w/ fr. good amount of barite. siltst- fr. odor.

LS- tan- gray- fn. xln.

sh- blk. fissile

sh- siltst- gray- brown- green.

LS- tan- brown- fr. xln. oil w/ fr. good amount of barite. silty

sh- blk. crin.

sh- siltst- gray- brown.

LS- tan- gray- fn. xln. fossil. silty chalky

sh- siltst- gray- brown- green. sandy

sd- brown- tan- xln. w/ fr. good amount of barite. silty

sh- siltst- gray- green- sandy

sd- gray- blk- green- gray- waxy.

sd- offwh- fr. gray- med- gray- xln. w/ barite. silty

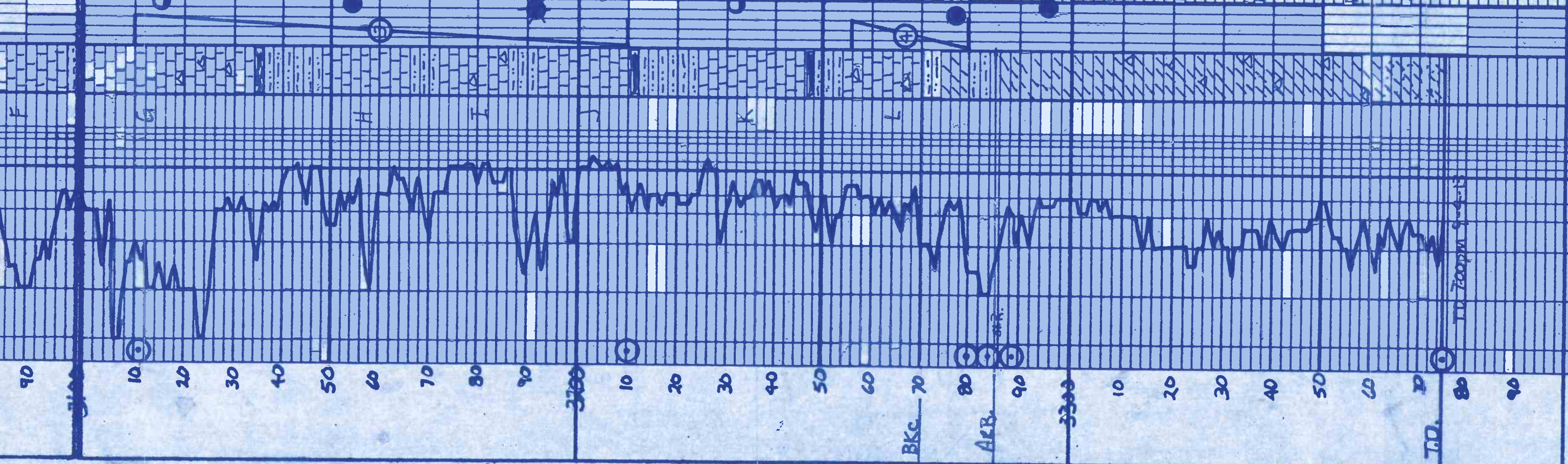
sd- offwh- fr. gray- med- coarse xln. w/ barite. silty

sd- a/a

sd- offwh- fr. gray- med- coarse xln. w/ barite. silty

sd- a/a

sd- offwh- sandy- gray- clear green



Mud
Vis-54
wt-9.0

Mud
Vis-54
wt-9.1
cni-5K

DST #32K6GJ
3110-3210
15" 45" 45" 60"
4.95 G.I.P.
80 G. H.O.C. w/ Mud
2.45 G. S.I.O.C.M. w/ Fr.
Fr. 11 100 100 154 R
S.I.P. 711-710 W

DST #4
3256-80
5' 30' 30' 30"
1.0 G. Mud
Fr. 9-10, 6-8 W
S.I.P. 363-95 W

Mud
Vis-54
wt-9.4
cni-7K

Mud
Vis-51
wt-9.1
odd holls.

