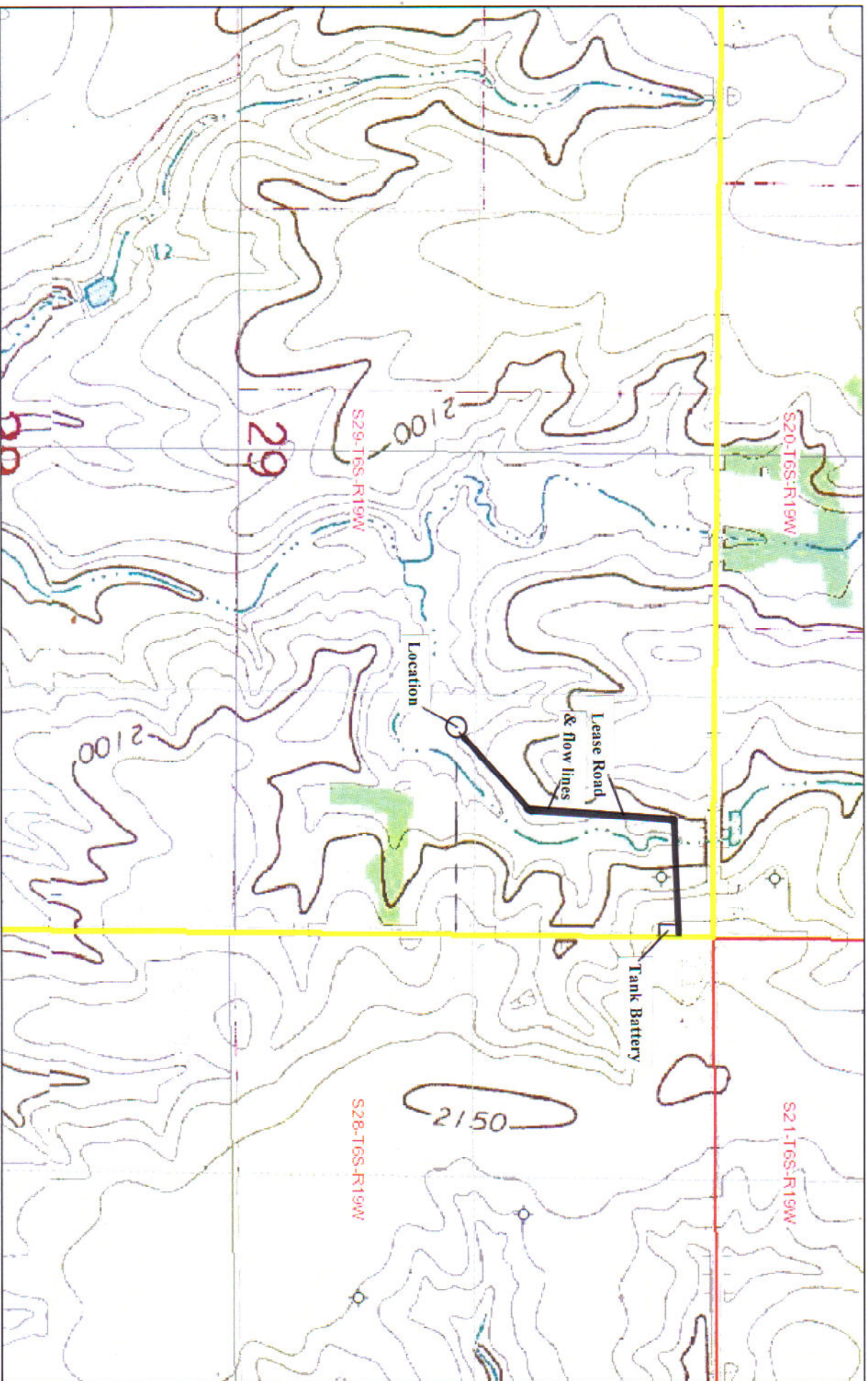


BAXTER-MILLER 29-1



October 25, 2013

NWNWSENE SEC 29, T6S, R19W
ROOKS COUNTY, KANSAS



Sources: Esri, DeLorme, NAVTEQ, TomTom, Intermap, increment P Corp.,
GEBCO, USGS, FAO, NPS, NRCAN, Geobase, IGN, Kadaster NL,