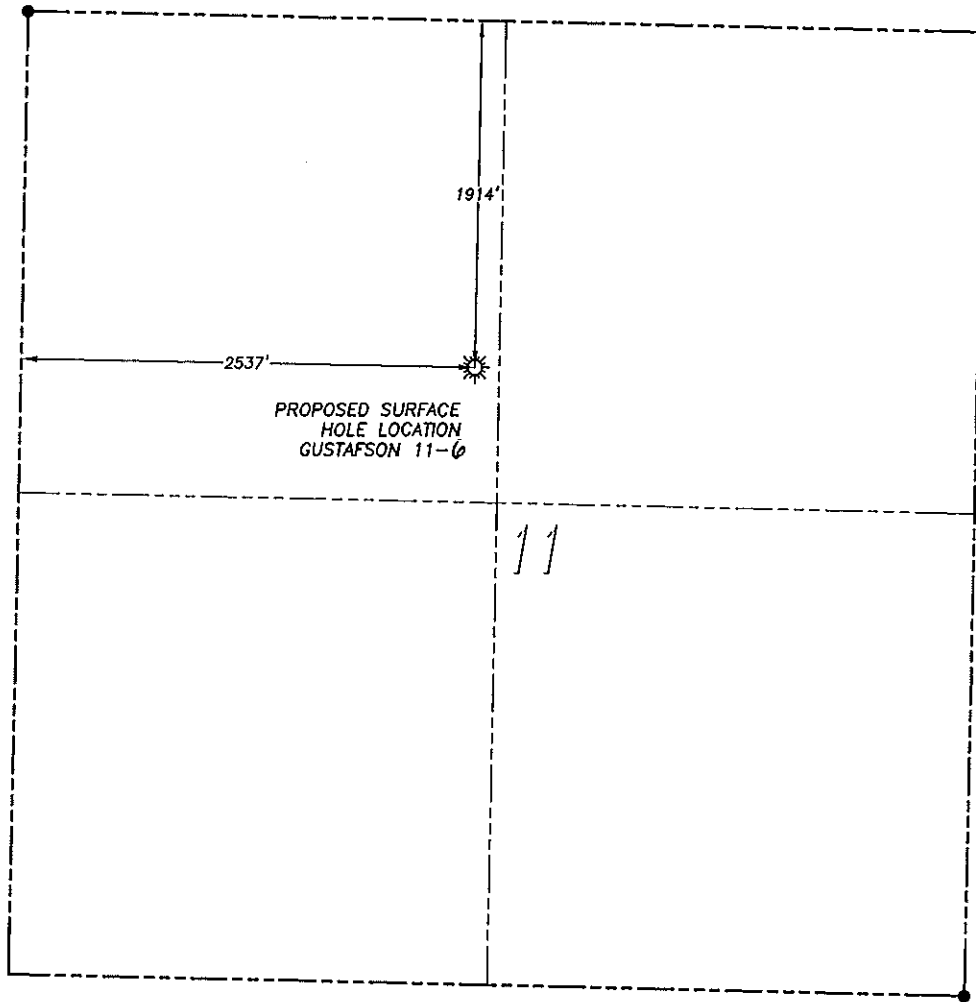


WELL LOCATION MAP GUSTAFSON 11-6

SECTION 11, TOWNSHIP 10 SOUTH, RANGE 22 WEST OF THE 6TH PRINCIPAL MERIDIAN



NAD 83 LATITUDE AND LONGITUDE

GUSTAFSON 11-6 SURFACE HOLE:

LATITUDE: N39.19967'

LONGITUDE: W99.74547'

ELEVATION: 2324'

FOOTAGE: 1914' FNL, 2537' FWL

QTR/QTR: SE4/NW4

DATE: 10/8/2013

IN ACCORDANCE WITH A REQUEST FROM McELVAIN ENERGY INC., DALEY LAND SURVEYING, INC. HAS DETERMINED THE SURFACE LOCATION OF THE GUSTAFSON 11-6 WELL TO BE 1914' FNL, 2537' FWL, AS MEASURED AT NINETY (90) DEGREES FROM THE SECTION LINES OF SECTION 11, TOWNSHIP 10 SOUTH, RANGE 22 WEST OF THE 6TH PRINCIPAL MERIDIAN, GRAHAM COUNTY, KANSAS.

AN ADDITIONAL STAKE WAS SET AT 1950' FNL, 2525' FWL

LATITUDE: N39.19958'

LONGITUDE: W99.74550'

NOTES:

- 1) HORIZONTAL DATUM IS NAD83.
- 2) VERTICAL DATUM IS NAVD88 AND ORIGINATES FROM N.G.S. BENCHMARK X-301 NETWORK, UTILIZING THE GEOID09 MODEL.
- 3) SURFACE USE: AGRICULTURAL.
- 4) THIS MAP DOES NOT REPRESENT A BOUNDARY SURVEY, IT IS NOT A LAND SURVEY PLAT OR AN IMPROVEMENT SURVEY PLAT AND IT IS NOT TO BE RELIED UPON FOR THE ESTABLISHMENT OF FENCE, BUILDING OR OTHER FUTURE IMPROVEMENT LINES.

DALEY LAND SURVEYING, INC. PARKER, CO. 80134 303 953 9841

ACCESS ROAD MAP GUSTAFSON 11-6

SECTION 11, TOWNSHIP 10 SOUTH, RANGE 22 WEST OF THE 6TH PRINCIPAL MERIDIAN

