

MUD LOG
WellSight Systems
Scale 1:240 (5"=100') Imperial
Measured Depth Log

Well Name: **MARCOTTE #3**
Location: **660'FNL & 400' FEL: Sec. 20 ;Twnsp. 9s.; Rge. 18w.**
License Number: **34795** Region: **Rooks County, KS**
Spud Date: **9-21-2013** Drilling Completed: **9-27-13**
Surface Coordinates: **W/2 E/2 NE NE**
700' FNL & 400' FEL
Bottom Hole Coordinates:
Ground Elevation (ft): **2167** K.B. Elevation (ft): **2173**
Logged Interval (ft): **2800** To: **3654** Total Depth (ft): **RTD 3657**
Formation: **Arbuckle**
Type of Drilling Fluid: **Chemical**

Printed by MUD.LOG from WellSight Systems 1-800-447-1534 www.WellSight.com

OPERATOR

Company: **ABUNDANT OIL PARTNERSHIP**
Address: **P.O. Box 2216**
Grand Island, NE 68802

GEOLOGIST

Name: **Mike Bair**
Company: **Abundant Oil Partnership**
Address: **Longmont, CO.**

FORMATION TOPS

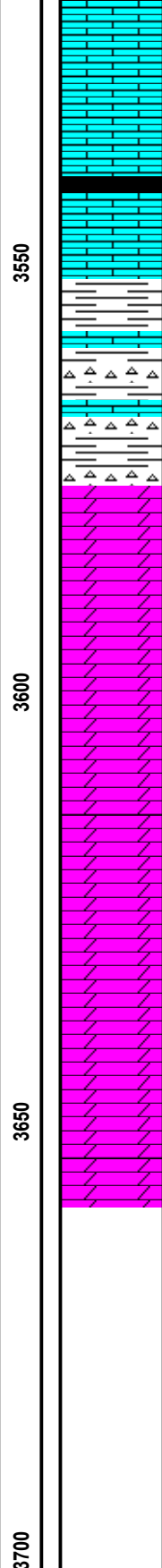
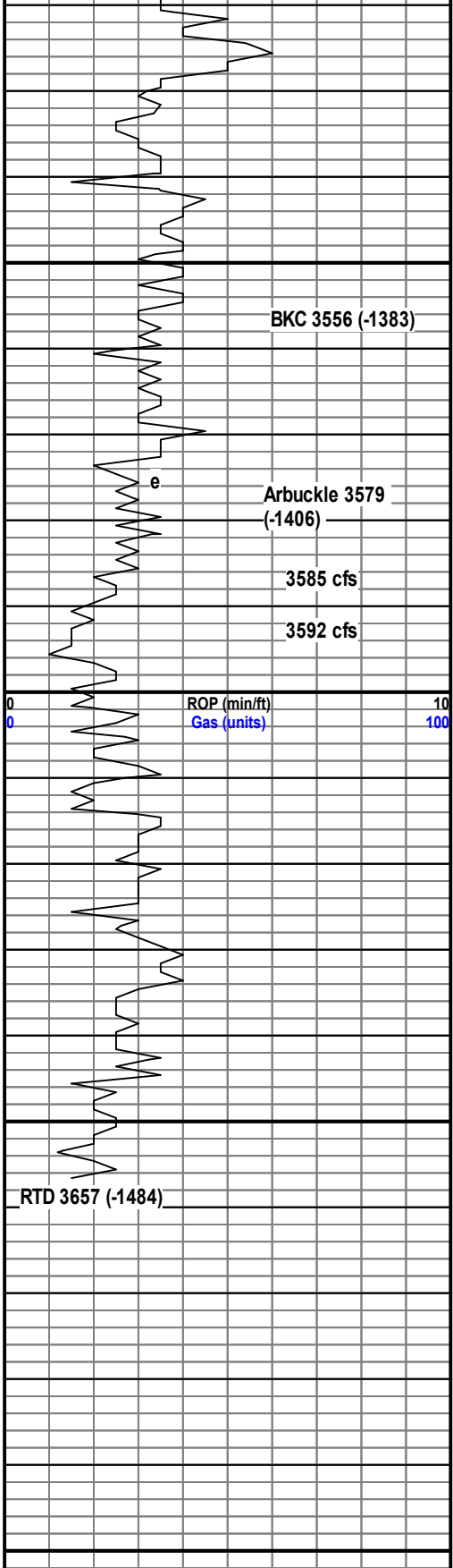
FORMATION	LOG TOP	SAMPLE TOP
Anhydrite	1506 (+667)	
Topeka	3085 (-912)	3088 (-915)
Heebner	3295 (-1122)	3300 (-1127)
Toronto	3315 (-1120)	3318 (-1123)
Lansing	3336 (-1163)	3338 (-1165)
BKC	3553 (-1380)	3556 (-1383)
Arbuckle	3577 (-1404)	3579 (-1406)
TD	3654 (-1481)	3657 (-1484)

DSTs

NONE

Comments

Production casing was ran to further test the economic potential of the Arbuckle formation.



a/a to Ls, wh w lt oil stn on end

Sh, blk; Ls, crm-brn, fxl, ns, n/o

Ls, crm, mst fxl, ns; r pc w sl spt'd surf stn, v sl sfo, tite, n/o 3550

Ls, crm, fxl, some cherty, spt'd sl vg por, lt surf stn, n/o to Ls, wh ool, sl-fr ool por, sl-low fr sfo, l-med rep 3560 60 min

Sh, v.c., abdn't; Chert, gry to crm; sct'd Ls, fxl, few pc w spt'd surf stn, v sl sfo

Dolo, wh, suc-fmxl, sl-some fr ixl por, few fr vy por, sl-L fr sfo in few rx, few spt'd sat'd stn, wk odor 3585 60 min

Dolo, tan, f grn, sat'd stn, fr ixl por, fr to few gd sfo, fr odor 3592 40 min

Dolo, a/a, L-gd odor, sat'd stn, fr sfo 3600

Dolo, crm, f-mxl, fr ixl por, few gd vg por, sat'd stn, fr to few good sfo, fr rep, gd odor 3610

Dolo, wh-crm, f-mxl, L fr ixl por, few gd vg por, sat'd stn, fr to few gd sfo, good odor; Chert, white;

Dolo, a/a to Dolo crm, oom, sat'd stn, sl-L fr sfo, fr oom por, Chert, op, ool, L gd odor 3630

Dolo, crm, f-mxl, mst pr-sl por, few fr vg por, surf stn to few sat'd stn, decr sfo, fr odor 3640

Dolo, wh-tan, mst barren, tite; Chert, wh, ool v lt odor 3650

a/a to Dolo, salmon, mxl, few w hvy black tarry stn, n/o 3657

VIS 59
WL 7.2
Chlr 1200
LCM 10#

1 1000

