



DRILL STEM TEST REPORT

Prepared For: **Stelbar Oil Corp. Inc**

1625 N. Waterfront PKWY
Suite 200
Wichita KS. 67206

ATTN: Dave Goldak

Freese #1-10

10-17s-33w Scott,KS

Start Date: 2013.10.21 @ 03:40:00

End Date: 2013.10.21 @ 12:30:40

Job Ticket #: 49065 DST #: 1

Trilobite Testing, Inc

PO Box 362 Hays, KS 67601

ph: 785-625-4778 fax: 785-625-5620

Printed: 2013.10.25 @ 14:34:17



TRILOBITE TESTING, INC.

DRILL STEM TEST REPORT

Stelbar Oil Corp. Inc
 1625 N. Waterfront PKWY
 Suite 200
 Wichita KS. 67206
 ATTN: Dave Goldak

10-17s-33w Scott,KS
Freeze #1-10
 Job Ticket: 49065 **DST#: 1**
 Test Start: 2013.10.21 @ 03:40:00

GENERAL INFORMATION:

Formation: **Marmanton**
 Deviated: No Whipstock: ft (KB)
 Time Tool Opened: 05:54:40
 Time Test Ended: 12:30:40
 Interval: **4382.00 ft (KB) To 4400.00 ft (KB) (TVD)**
 Total Depth: 4400.00 ft (KB) (TVD)
 Hole Diameter: 7.88 inches Hole Condition: Good
 Test Type: Conventional Bottom Hole (Initial)
 Tester: Will MacLean
 Unit No: 58
 Reference Elevations: 3000.00 ft (KB)
 2993.00 ft (CF)
 KB to GR/CF: 7.00 ft

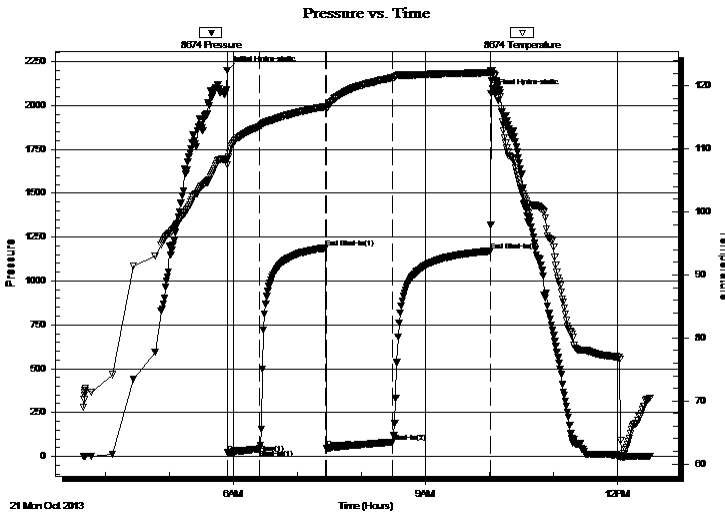
Serial #: 8674

Inside

Press @ Run Depth: 82.17 psig @ 4385.00 ft (KB) Capacity: 8000.00 psig
 Start Date: 2013.10.21 End Date: 2013.10.21 Last Calib.: 2013.10.21
 Start Time: 03:40:00 End Time: 12:30:40 Time On Btm: 2013.10.21 @ 05:54:25
 Time Off Btm: 2013.10.21 @ 10:01:54

TEST COMMENT: IF- Weak Surface Blow Built to 4 1/2"
 IS- No Blow
 FF- Weak Surface Blow Built to 7"
 FS- No Blow

PRESSURE SUMMARY



Time (Min.)	Pressure (psig)	Temp (deg F)	Annotation
0	2199.70	108.37	Initial Hydro-static
1	20.19	107.53	Open To Flow (1)
31	42.78	113.57	Shut-In(1)
93	1188.21	116.70	End Shut-In(1)
93	46.89	116.29	Open To Flow (2)
156	82.17	121.29	Shut-In(2)
247	1171.00	122.08	End Shut-In(2)
248	2068.59	122.36	Final Hydro-static

Recovery

Length (ft)	Description	Volume (bbl)
62.00	MCW 34%m 66%w with Oil Spots	0.87
62.00	MCW 14%m 86%w with Skim of Oil on	0.87
15.00	OMCW 2%oil 20%m 78%w	0.21
10.00	MCO 3%m 97%oil	0.14

Gas Rates

	Choke (inches)	Pressure (psig)	Gas Rate (Mcf/d)



TRILOBITE TESTING, INC.

DRILL STEM TEST REPORT

Stelbar Oil Corp. Inc
 1625 N. Waterfront PKWY
 Suite 200
 Wichita KS. 67206
 ATTN: Dave Goldak

10-17s-33w Scott,KS
Freeze #1-10
 Job Ticket: 49065 **DST#: 1**
 Test Start: 2013.10.21 @ 03:40:00

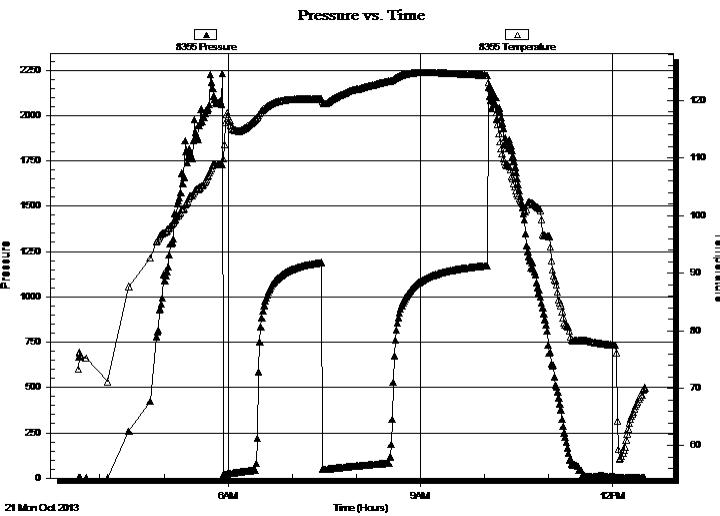
GENERAL INFORMATION:

Formation: **Marmanton**
 Deviated: No Whipstock: ft (KB)
 Time Tool Opened: 05:54:40
 Time Test Ended: 12:30:40
Interval: 4382.00 ft (KB) To 4400.00 ft (KB) (TVD)
 Total Depth: 4400.00 ft (KB) (TVD)
 Hole Diameter: 7.88 inches Hole Condition: Good
 Test Type: Conventional Bottom Hole (Initial)
 Tester: Will MacLean
 Unit No: 58
 Reference Elevations: 3000.00 ft (KB)
 2993.00 ft (CF)
 KB to GR/CF: 7.00 ft

Serial #: 8355 Outside

Press @ Run Depth: psig @ 4385.00 ft (KB)
 Start Date: 2013.10.21 End Date: 2013.10.21
 Start Time: 03:40:05 End Time: 12:30:22
 Capacity: 8000.00 psig
 Last Calib.: 2013.10.21
 Time On Btm:
 Time Off Btm:

TEST COMMENT: IF- Weak Surface Blow Built to 4 1/2"
 IS- No Blow
 FF- Weak Surface Blow Built to 7"
 FS- No Blow



PRESSURE SUMMARY

Time (Min.)	Pressure (psig)	Temp (deg F)	Annotation

Recovery

Length (ft)	Description	Volume (bbl)
62.00	MCW 34% m 66% w with Oil Spots	0.87
62.00	MCW 14% m 86% w with Skim of Oil on	0.87
15.00	OMCW 2% oil 20% m 78% w	0.21
10.00	MCO 3% m 97% oil	0.14

Gas Rates

Choke (inches)	Pressure (psig)	Gas Rate (Mcf/d)



**TRILOBITE
TESTING, INC.**

DRILL STEM TEST REPORT

TOOL DIAGRAM

Stelbar Oil Corp. Inc
1625 N. Waterfront PKWY
Suite 200
Wichita KS. 67206
ATTN: Dave Goldak

10-17s-33w Scott,KS
Freeze #1-10
Job Ticket: 49065 **DST#: 1**
Test Start: 2013.10.21 @ 03:40:00

Tool Information

Drill Pipe:	Length: 4373.00 ft	Diameter: 3.80 inches	Volume: 61.34 bbl	Tool Weight: 2000.00 lb
Heavy Wt. Pipe:	Length: 0.00 ft	Diameter: 0.00 inches	Volume: 0.00 bbl	Weight set on Packer: 24000.00 lb
Drill Collar:	Length: 0.00 ft	Diameter: 2.25 inches	Volume: 0.00 bbl	Weight to Pull Loose: 14000.00 lb
			<u>Total Volume: 61.34 bbl</u>	Tool Chased ft
Drill Pipe Above KB:	20.00 ft			String Weight: Initial 62000.00 lb
Depth to Top Packer:	4382.00 ft			Final 62000.00 lb
Depth to Bottom Packer:	ft			
Interval between Packers:	18.00 ft			
Tool Length:	47.00 ft			
Number of Packers:	2	Diameter: 6.75 inches		

Tool Comments:

Tool Description	Length (ft)	Serial No.	Position	Depth (ft)	Accum. Lengths
------------------	-------------	------------	----------	------------	----------------

Change Over Sub	1.00			4354.00	
Shut In Tool	5.00			4359.00	
Sampler	2.00			4361.00	
Hydraulic tool	5.00			4366.00	
Jars	5.00			4371.00	
Safety Joint	2.00			4373.00	
Packer	5.00			4378.00	29.00 Bottom Of Top Packer
Packer	4.00			4382.00	
Stubb	1.00			4383.00	
Perforations	2.00			4385.00	
Recorder	0.00	8355	Outside	4385.00	
Recorder	0.00	8674	Inside	4385.00	
Perforations	10.00			4395.00	
Bullnose	5.00			4400.00	18.00 Bottom Packers & Anchor

Total Tool Length: 47.00



**TRILOBITE
TESTING, INC.**

DRILL STEM TEST REPORT

FLUID SUMMARY

Stelbar Oil Corp. Inc

10-17s-33w Scott,KS

1625 N. Waterfront PKWY
Suite 200
Wichita KS. 67206
ATTN: Dave Goldak

Freeze #1-10

Job Ticket: 49065

DST#: 1

Test Start: 2013.10.21 @ 03:40:00

Mud and Cushion Information

Mud Type: Gel Chem
Mud Weight: 9.00 lb/gal
Viscosity: 42.00 sec/qt
Water Loss: 10.74 in³
Resistivity: ohm.m
Salinity: 7000.00 ppm
Filter Cake: 1.00 inches

Cushion Type:
Cushion Length: ft
Cushion Volume: bbl
Gas Cushion Type:
Gas Cushion Pressure: psig

Oil API: 34 deg API
Water Salinity: 36000 ppm

Recovery Information

Recovery Table

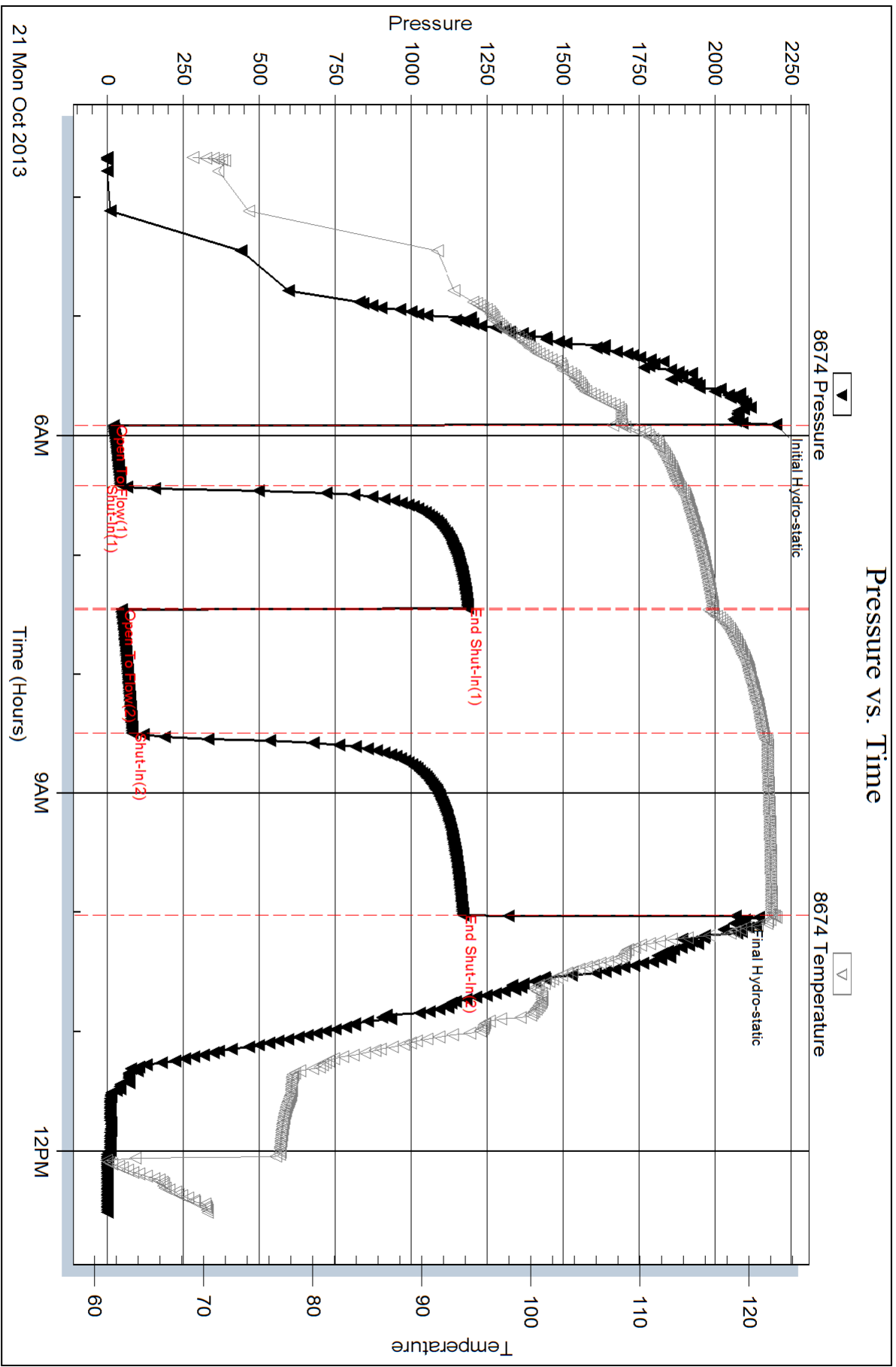
Length ft	Description	Volume bbl
62.00	MCW 34%m 66%w with Oil Spots	0.870
62.00	MCW 14%m 86%w with Skim of Oil on Top	0.870
15.00	OMCW 2%oil 20%m 78%w	0.210
10.00	MCO 3%m 97%oil	0.140

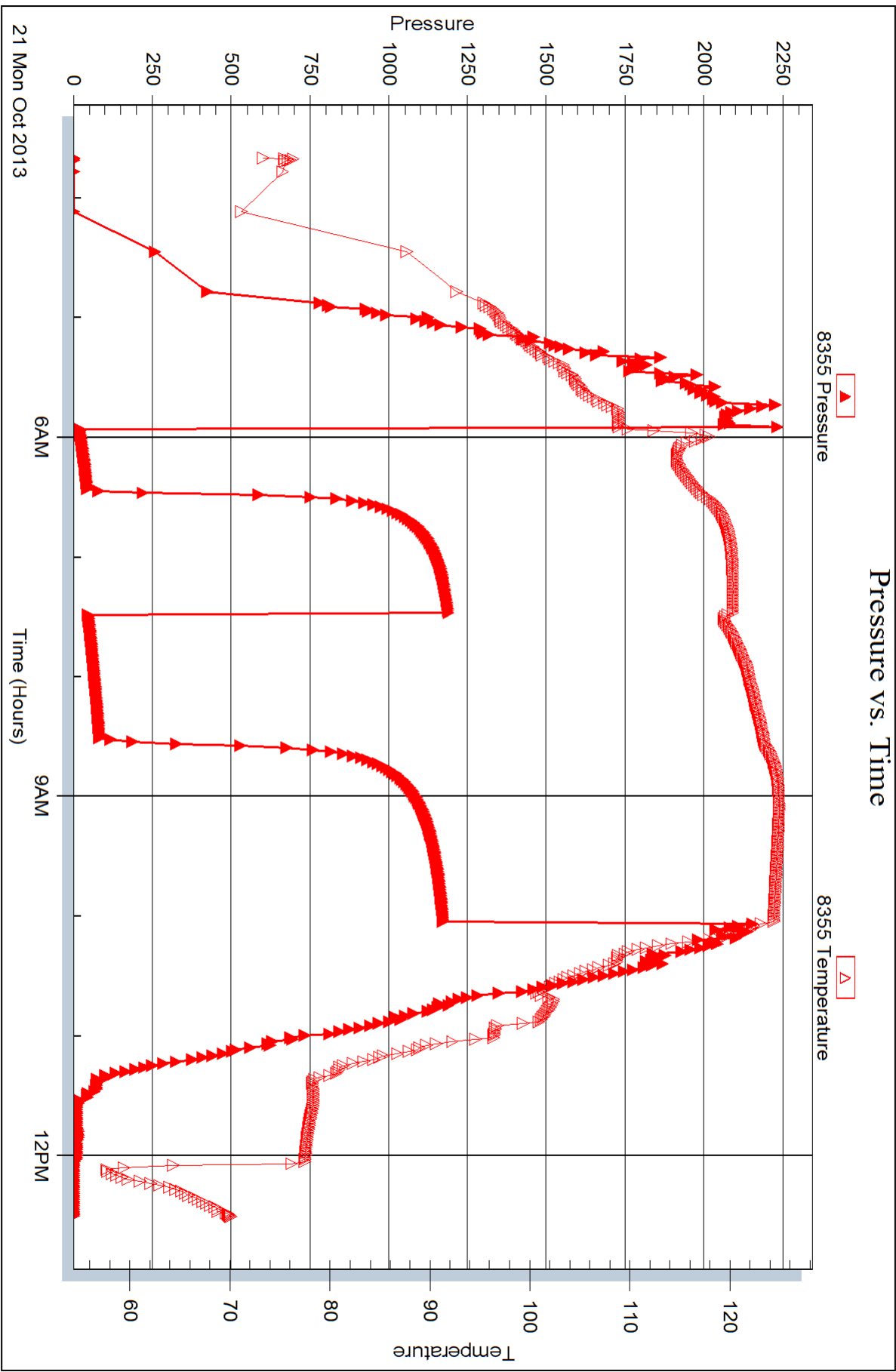
Total Length: 149.00 ft Total Volume: 2.090 bbl

Num Fluid Samples: 0 Num Gas Bombs: 0 Serial #:

Laboratory Name: Laboratory Location:

Recovery Comments: API is 35 @ 70f = 34
RW is .221 @ 60f = 36000







DRILL STEM TEST REPORT

Prepared For: **Stelbar Oil Corp. Inc**

1625 N. Waterfront PKWY
Suite 200
Wichita KS. 67206

ATTN: Dave Goldak

Freese #1-10

10-17s-33w Scott,KS

Start Date: 2013.10.22 @ 15:00:00

End Date: 2013.10.22 @ 23:29:24

Job Ticket #: 49066 DST #: 2

Trilobite Testing, Inc

PO Box 362 Hays, KS 67601

ph: 785-625-4778 fax: 785-625-5620

Printed: 2013.10.25 @ 14:33:43



TRILOBITE TESTING, INC.

DRILL STEM TEST REPORT

Stelbar Oil Corp. Inc
 1625 N. Waterfront PKWY
 Suite 200
 Wichita KS. 67206
 ATTN: Dave Goldak

10-17s-33w Scott,KS
Freeze #1-10
 Job Ticket: 49066 **DST#: 2**
 Test Start: 2013.10.22 @ 15:00:00

GENERAL INFORMATION:

Formation: **Johnson**
 Deviated: No Whipstock: ft (KB)
 Time Tool Opened: 16:33:10
 Time Test Ended: 23:29:24
 Interval: **4600.00 ft (KB) To 4629.00 ft (KB) (TVD)**
 Total Depth: 4629.00 ft (KB) (TVD)
 Hole Diameter: 7.88 inches Hole Condition: Good
 Test Type: Conventional Bottom Hole (Reset)
 Tester: Will MacLean
 Unit No: 58
 Reference Elevations: 3000.00 ft (KB)
 2993.00 ft (CF)
 KB to GR/CF: 7.00 ft

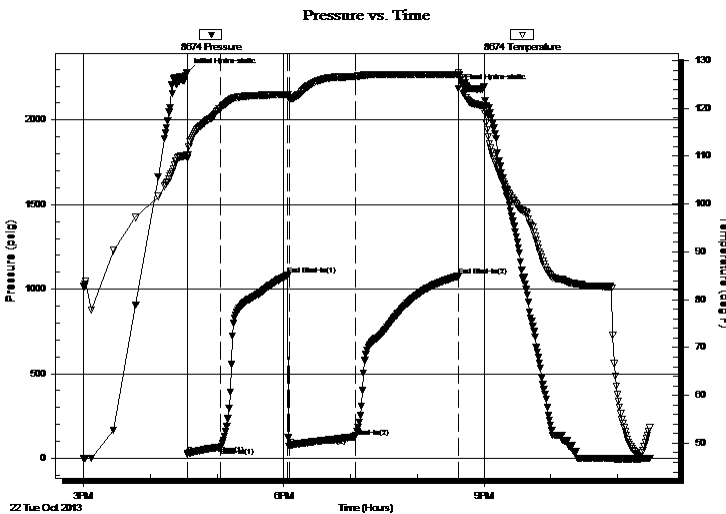
Serial #: 8674

Inside

Press @ Run Depth: 126.96 psig @ 4601.00 ft (KB) Capacity: 8000.00 psig
 Start Date: 2013.10.22 End Date: 2013.10.22 Last Calib.: 2013.10.22
 Start Time: 15:00:00 End Time: 23:29:24 Time On Btm: 2013.10.22 @ 16:32:55
 Time Off Btm: 2013.10.22 @ 20:36:39

TEST COMMENT: IF- Weak Surface Blow Built to BOB in 7 min
 IS- Weak Surface Blow in 4 1/4 min Built to 5"
 FF- Surface Blow Built to BOB in 1 3/4 min
 FS- Weak Surface Blow Built to BOB in 19 1/4 min

PRESSURE SUMMARY



Time (Min.)	Pressure (psig)	Temp (deg F)	Annotation
0	2281.47	110.37	Initial Hydro-static
1	25.60	109.54	Open To Flow (1)
31	65.82	119.99	Shut-In(1)
91	1083.54	122.88	End Shut-In(1)
92	72.94	122.09	Open To Flow (2)
152	126.96	126.66	Shut-In(2)
244	1076.02	127.00	End Shut-In(2)
244	2183.99	127.51	Final Hydro-static

Recovery

Gas Rates

Length (ft)	Description	Volume (bbl)
62.00	OGCM 25%oil 27%g 48%m	0.87
62.00	OGCM 18%oil 24%g 58%m	0.87
62.00	GOCM 26%g 27%oil 47%m	0.87
62.00	OGCM 27%oil 34%g 39%m	0.87
40.00	GOCM 7%g 31%oil 62%m	0.56
0.00	1634' of GIP	0.00

Choke (inches)	Pressure (psig)	Gas Rate (Mcf/d)

* Recovery from multiple tests



TRILOBITE TESTING, INC.

DRILL STEM TEST REPORT

Stelbar Oil Corp. Inc
1625 N. Waterfront PKWY
Suite 200
Wichita KS. 67206
ATTN: Dave Goldak

10-17s-33w Scott,KS

Freeze #1-10

Job Ticket: 49066 **DST#: 2**

Test Start: 2013.10.22 @ 15:00:00

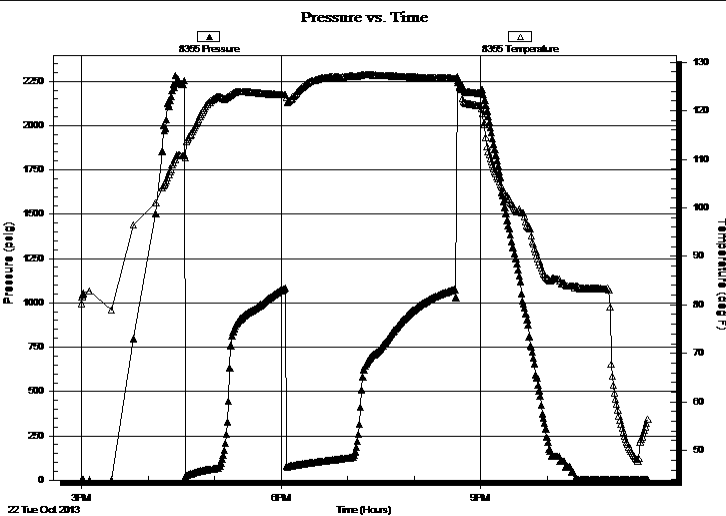
GENERAL INFORMATION:

Formation: **Johnson**
 Deviated: No Whipstock: ft (KB)
 Test Type: Conventional Bottom Hole (Reset)
 Time Tool Opened: 16:33:10 Tester: Will MacLean
 Time Test Ended: 23:29:24 Unit No: 58
Interval: 4600.00 ft (KB) To 4629.00 ft (KB) (TVD)
 Reference Elevations: 3000.00 ft (KB)
 Total Depth: 4629.00 ft (KB) (TVD) 2993.00 ft (CF)
 Hole Diameter: 7.88 inches Hole Condition: Good KB to GR/CF: 7.00 ft

Serial #: 8355 Outside

Press @ Run Depth: psig @ 4601.00 ft (KB) Capacity: 8000.00 psig
 Start Date: 2013.10.22 End Date: 2013.10.22 Last Calib.: 2013.10.22
 Start Time: 15:00:05 End Time: 23:30:59 Time On Btm:
 Time Off Btm:

TEST COMMENT: IF- Weak Surface Blow Built to BOB in 7 min
 IS- Weak Surface Blow in 4 1/4 min Built to 5"
 FF- Surface Blow Built to BOB in 1 3/4 min
 FS- Weak Surface Blow Built to BOB in 19 1/4 min



PRESSURE SUMMARY

Time (Min.)	Pressure (psig)	Temp (deg F)	Annotation

Recovery

Length (ft)	Description	Volume (bbl)
62.00	OGCM 25%oil 27%g 48%m	0.87
62.00	OGCM 18%oil 24%g 58%m	0.87
62.00	GOCM 26%g 27%oil 47%m	0.87
62.00	OGCM 27%oil 34%g 39%m	0.87
40.00	GOCM 7%g 31%oil 62%m	0.56
0.00	1634' of GIP	0.00

* Recovery from multiple tests

Gas Rates

Choke (inches)	Pressure (psig)	Gas Rate (Mcf/d)



**TRILOBITE
TESTING, INC.**

DRILL STEM TEST REPORT

TOOL DIAGRAM

Stelbar Oil Corp. Inc
1625 N. Waterfront PKWY
Suite 200
Wichita KS. 67206
ATTN: Dave Goldak

10-17s-33w Scott,KS
Freeze #1-10
Job Ticket: 49066 **DST#: 2**
Test Start: 2013.10.22 @ 15:00:00

Tool Information

Drill Pipe:	Length: 4593.00 ft	Diameter: 3.80 inches	Volume: 64.43 bbl	Tool Weight: 2000.00 lb
Heavy Wt. Pipe:	Length: 0.00 ft	Diameter: 0.00 inches	Volume: 0.00 bbl	Weight set on Packer: 26000.00 lb
Drill Collar:	Length: 0.00 ft	Diameter: 2.25 inches	Volume: 0.00 bbl	Weight to Pull Loose: 10000.00 lb
			<u>Total Volume: 64.43 bbl</u>	Tool Chased ft
Drill Pipe Above KB:	22.00 ft			String Weight: Initial 60000.00 lb
Depth to Top Packer:	4600.00 ft			Final 60000.00 lb
Depth to Bottom Packer:	ft			
Interval between Packers:	29.00 ft			
Tool Length:	58.00 ft			
Number of Packers:	2	Diameter: 6.75 inches		

Tool Comments:

Tool Description	Length (ft)	Serial No.	Position	Depth (ft)	Accum. Lengths
------------------	-------------	------------	----------	------------	----------------

Change Over Sub	1.00			4572.00	
Shut In Tool	5.00			4577.00	
Sampler	2.00			4579.00	
Hydraulic tool	5.00			4584.00	
Jars	5.00			4589.00	
Safety Joint	2.00			4591.00	
Packer	5.00			4596.00	29.00 Bottom Of Top Packer
Packer	4.00			4600.00	
Stubb	1.00			4601.00	
Recorder	0.00	8355	Outside	4601.00	
Recorder	0.00	8674	Inside	4601.00	
Perforations	23.00			4624.00	
Bullnose	5.00			4629.00	29.00 Bottom Packers & Anchor

Total Tool Length: 58.00



**TRILOBITE
TESTING, INC.**

DRILL STEM TEST REPORT

FLUID SUMMARY

Stelbar Oil Corp. Inc
1625 N. Waterfront PKWY
Suite 200
Wichita KS. 67206
ATTN: Dave Goldak

10-17s-33w Scott,KS
Freeze #1-10
Job Ticket: 49066 **DST#: 2**
Test Start: 2013.10.22 @ 15:00:00

Mud and Cushion Information

Mud Type: Gel Chem	Cushion Type:	Oil API:	deg API
Mud Weight: 9.00 lb/gal	Cushion Length: ft	Water Salinity:	ppm
Viscosity: 46.00 sec/qt	Cushion Volume: bbl		
Water Loss: 9.58 in ³	Gas Cushion Type:		
Resistivity: ohm.m	Gas Cushion Pressure: psig		
Salinity: 7000.00 ppm			
Filter Cake: 1.00 inches			

Recovery Information

Recovery Table

Length ft	Description	Volume bbl
62.00	OGCM 25%oil 27%g 48%m	0.870
62.00	OGCM 18%oil 24%g 58%m	0.870
62.00	GOCM 26%g 27%oil 47%m	0.870
62.00	OGCM 27%oil 34%g 39%m	0.870
40.00	GOCM 7%g 31%oil 62%m	0.561
0.00	1634' of GIP	0.000

Total Length: 288.00 ft Total Volume: 4.041 bbl
 Num Fluid Samples: 0 Num Gas Bombs: 0 Serial #:
 Laboratory Name: Laboratory Location:
 Recovery Comments: Sampler was Plugged

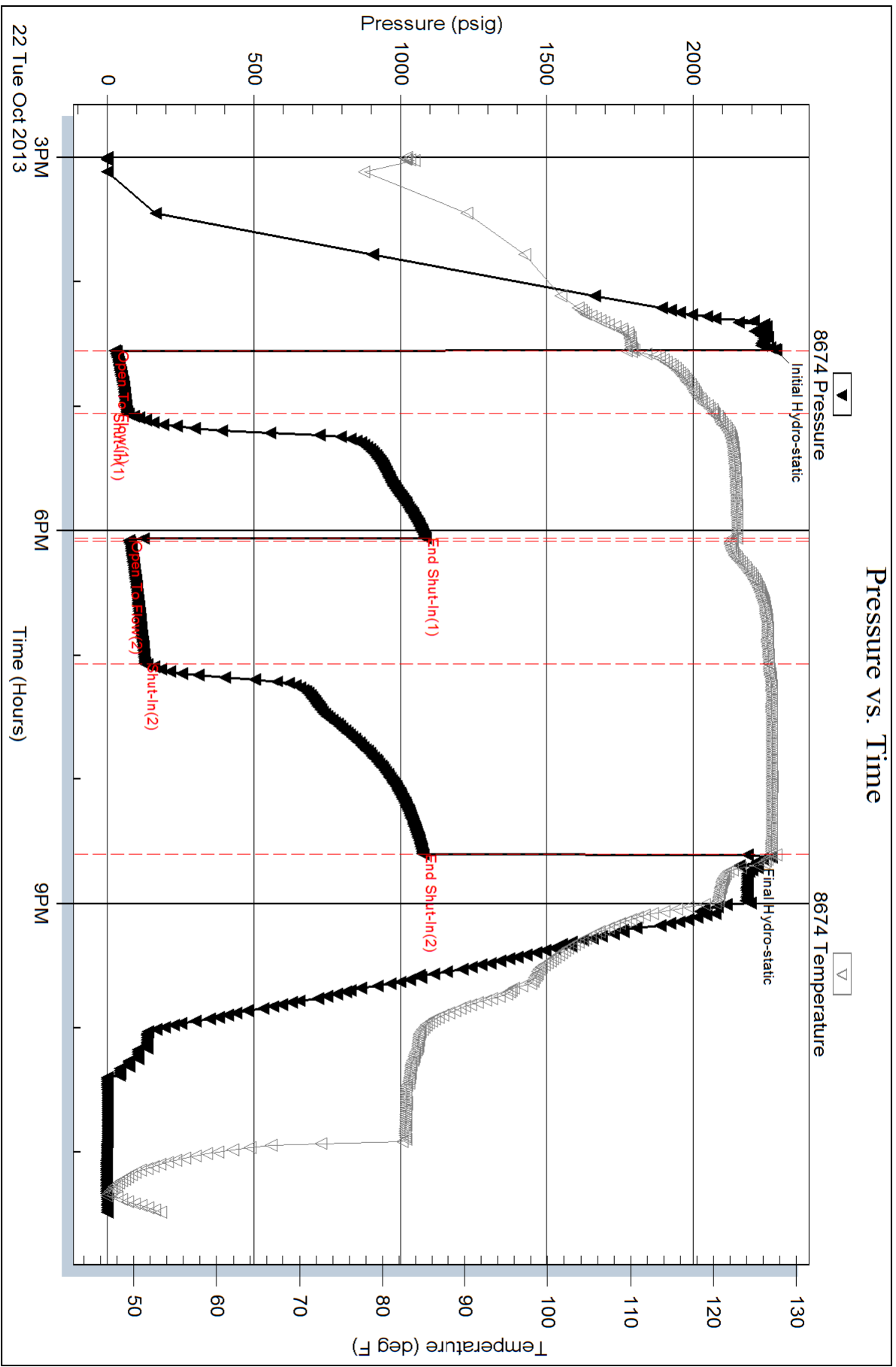
Serial #: 8674

Inside

Stelbar Oil Corp. Inc

Freese #1-10

DST Test Number: 2



Trilobite Testing, Inc

Ref. No: 49066

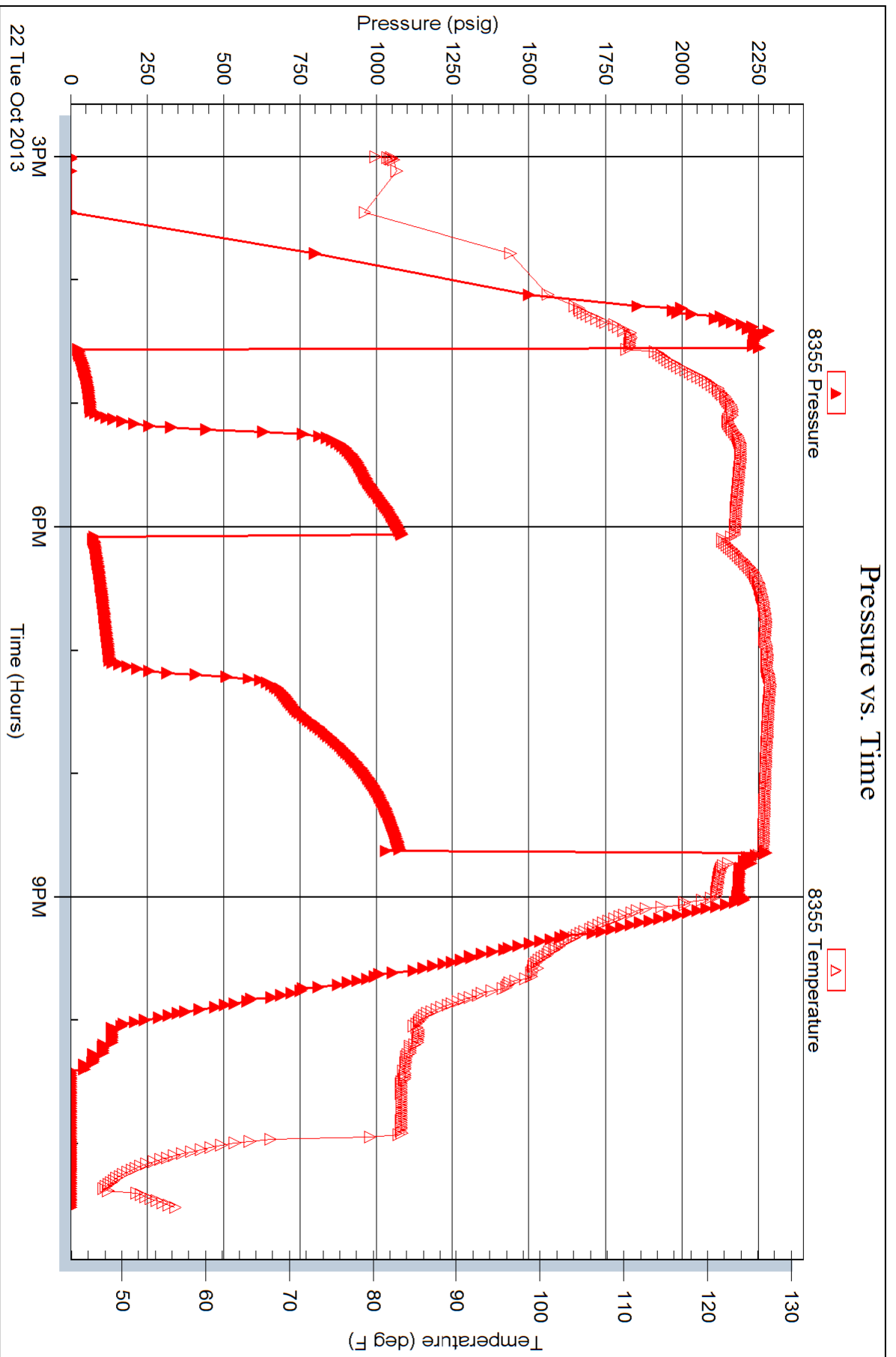
Printed: 2013.10.25 @ 14:33:44

Serial #: 8355

Outside Stelbar Oil Corp. Inc

Freese #1-10

DST Test Number: 2



Trilobite Testing, Inc

Ref. No: 49066

Printed: 2013.10.25 @ 14:33:44



TRILOBITE TESTING INC.

P.O. Box 1733 • Hays, Kansas 67601

Test Ticket

NO. 49065

Well Name & No. Freeze #170 Test No. DST #1 Date 10-21-13
 Company Stelbar Oil Corp. Inc Elevation 3000 KB 2993 GL
 Address 1625 N. Waterfront PKWY Suite 200 Wichita KS 67206
 Co. Rep / Geo. Dave Goldak Rig Pickrell Rig #10
 Location: Sec. 10 Twp. 17s Rge. 33W Co. Scott State KS

Interval Tested 4382 - 4400 Zone Tested Marmanton
 Anchor Length 18 Drill Pipe Run 4373 Mud Wt. 9.2
 Top Packer Depth 4378 Drill Collars Run 0 Vis 42
 Bottom Packer Depth 4382 Wt. Pipe Run 0 WL 10.8
 Total Depth 4400 Chlorides 7000 ppm System LCM 21b
 Blow Description IF- Weak Surface Blow Built to 4 1/2"
ISI- No Blow
FF- Weak Surface Blow Built to 7"
FSS- No Blow

Rec	Feet of	%gas	%oil	%water	%mud
<u>10</u>	<u>MCO</u>	<u>97</u>		<u>3</u>	
<u>15</u>	<u>OMCW</u>	<u>2</u>	<u>78</u>	<u>20</u>	
<u>62</u>	<u>MCW with a skim of oil on top</u>		<u>86</u>	<u>14</u>	
<u>62</u>	<u>MCW with oil spots</u>		<u>66</u>	<u>34</u>	

Rec Total 149 BHT 118 Gravity 34 API RW 221 @ 60 °F Chlorides 36 600 ppm

(A) Initial Hydrostatic 2199 Test 1250 T-On Location 00:20
 (B) First Initial Flow 20 Jars 250 T-Started 3:40
 (C) First Final Flow 42 Safety Joint 75 T-Open 5:54
 (D) Initial Shut-In 1188 Circ Sub N/C T-Pulled 10:01
 (E) Second Initial Flow 46 Hourly Standby T-Out 12:30
 (F) Second Final Flow 82 Mileage 24 R/T 37.20 Comments API is 35 @ 70f = 34
 (G) Final Shut-In 1171 Sampler 250
 (H) Final Hydrostatic 2068 Straddle Ruined Shale Packer
 Shale Packer Ruined Packer
 Extra Packer Extra Copies
 Extra Recorder Sub Total 0
 Day Standby Total 1862.20
 Accessibility MP/DST Disc't
 Sub Total 1862.20

Initial Open 30
 Initial Shut-In 60
 Final Flow 60
 Final Shut-In 90

Approved By [Signature] Our Representative [Signature]

Trilobite Testing Inc. shall not be liable for damaged of any kind of the property or personnel of the one for whom a test is made, or for any loss suffered or sustained, directly or indirectly, through the use of its equipment, or its statements or opinion concerning the results of any test, tools lost or damaged in the hole shall be paid for at cost by the party for whom the test is made.



TRILOBITE TESTING, INC.

P.O. Box 362 • Hays, Kansas 67601

FLUID SAMPLER DATA

Ticket No. 49065 Date 10-21-13
 Company Name Stellar Oil Corp. Inc
 Lease Freese #1-10 Test No. DST #1
 County Scott Sec. 10 Twp. 17s Rng. 33w

SAMPLER RECOVERY

Gas 1 cubic ft ML
 Oil Trace ML
 Mud _____ ML
 Water 1850 ML
 Other _____ ML
 Pressure 350 ML
 Total ~~1850~~ 1850 ML

PIT MUD ANALYSIS

Chlorides _____ ppm.
 Resistivity _____ ohms @ _____ F
 Viscosity _____
 Mud Weight _____
 Filtrate _____
 Other _____

SAMPLER ANALYSIS

Resistivity _____ ohms @ _____ F
 Chlorides _____ ppm.
 Gravity _____ corrected @60F

PIPE RECOVERY

TOP
 Resistivity _____ ohms @ _____ F
 Chlorides _____ ppm.

MIDDLE
 Resistivity _____ ohms @ _____ F
 Chlorides _____ ppm.

BOTTOM
 Resistivity _____ ohms @ _____ F
 Chlorides _____ ppm.



TRILOBITE TESTING INC.

P.O. Box 1733 • Hays, Kansas 67601

Test Ticket

NO. 49066

Well Name & No. Freese #1-10 Test No. DST #2 Date 10-22-13
 Company Stelbar Oil Corp. Inc Elevation 3000 KB 2993 GL
 Address 1625 N. Waterfront PKWY Suite 200 Wichita KS 67206
 Co. Rep / Geo. Dave Goldak Rig Pickrell 10
 Location: Sec. 10 Twp. 17s Rge. 33W Co. Scott State KS

Interval Tested 4600 - 4629 Zone Tested Johnson
 Anchor Length 29 Drill Pipe Run 4593 Mud Wt. 9.3
 Top Packer Depth 4596 Drill Collars Run 0 Vis 46
 Bottom Packer Depth 4600 Wt. Pipe Run 0 WL 9.6
 Total Depth 4629 Chlorides 7000 ppm System LCM 216
 Blow Description IF - Weak Surface Blow Built to BOB in 7 min
ISI - Weak Surface Blow in 4 1/4 min
FF - Surface Blow Built to BOB
FSI - Weak Surface Blow Built to BOB in 19 1/4 min

Rec	Feet of	%gas	%oil	%water	%mud
40	0-0CM	7	31	62	
62	0-0CM	34	27	39	
62	0-0CM	26	27	47	
62	0-0CM	24	18	58	
62	0-0CM	27	25	48	

Rec Total _____ BHT 124 Gravity _____ API RW _____ @ _____ °F Chlorides _____ ppm

(A) Initial Hydrostatic 2281 Test 1250 T-On Location 13:20
 (B) First Initial Flow 25 Jars 250 T-Started 15:00
 (C) First Final Flow 65 Safety Joint 75 T-Open 16:33
 (D) Initial Shut-In 1083 Circ Sub NIC T-Pulled 20:36
 (E) Second Initial Flow 72 Hourly Standby _____ T-Out 23:29
 (F) Second Final Flow 126 Mileage 24 R/T x 2 74.40 Comments 1634' G-IP
 (G) Final Shut-In 1076 Sampler 250
 (H) Final Hydrostatic 2183 Straddle _____ Ruined Shale Packer _____
 Shale Packer _____ Ruined Packer _____
 Extra Packer _____ Extra Copies _____
 Initial Open 30 Extra Recorder 1d 11h Sub Total 800
 Initial Shut-In 60 Day Standby Dave called me at 9:45 AM on 10-24 to load tools Total 2699.40
 Final Flow 60 Accessibility load tools MP/DST Disc't _____
 Final Shut-In 90 Sub Total 1899.40

Approved By

Our Representative

Trilobite Testing Inc. shall not be liable for damaged of any kind of the property or personnel of the one for whom a test is made, or for any loss suffered or sustained, directly or indirectly, through the use of its equipment, or its statements or opinion concerning the results of any test, tools lost or damaged in the hole shall be paid for at cost by the party for whom the test is made.



TRILOBITE TESTING, INC.

P.O. Box 362 • Hays, Kansas 67601

FLUID SAMPLER DATA

Ticket No. 49066 Date 10-22-13
 Company Name Stelbar Oil Corp
 Lease Freese #1-10 Test No. DST #2
 County Scott Sec. 10 Twp. 17s Rng. 33w

SAMPLER RECOVERY

Gas _____ ML
 Oil _____ ML
 Mud _____ ML
 Water _____ ML
 Other _____ ML
 Pressure _____ ML
 Total Plugged ML

PIT MUD ANALYSIS

Chlorides _____ ppm.
 Resistivity _____ ohms @ _____ F
 Viscosity _____
 Mud Weight _____
 Filtrate _____
 Other _____

SAMPLER ANALYSIS

Resistivity _____ ohms @ _____ F
 Chlorides _____ ppm.
 Gravity _____ corrected @60F

PIPE RECOVERY

TOP
 Resistivity _____ ohms @ _____ F
 Chlorides _____ ppm.

MIDDLE
 Resistivity _____ ohms @ _____ F
 Chlorides _____ ppm.

BOTTOM
 Resistivity _____ ohms @ _____ F
 Chlorides _____ ppm.