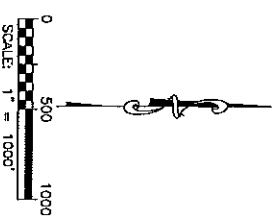
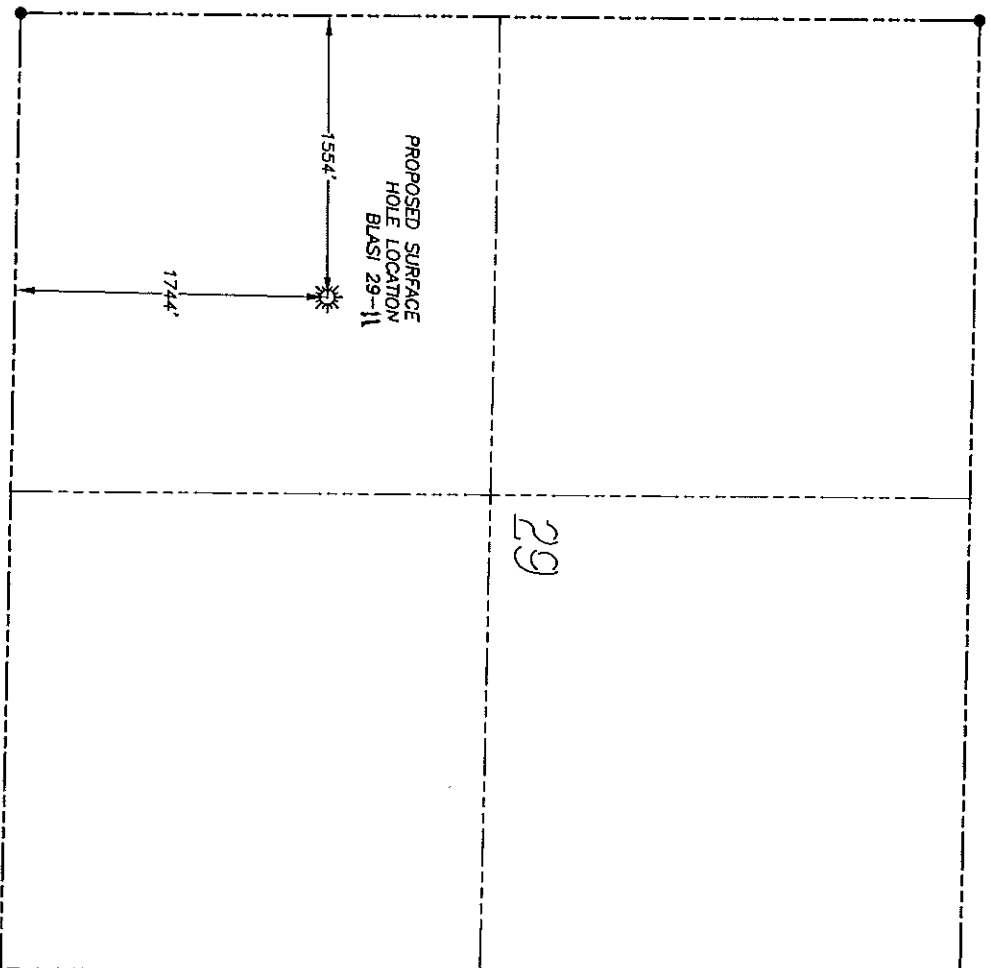


DALEY LAND SURVEYING, INC.      PARKER, CO. 80134      303 953 9841

## WELL LOCATION MAP BLASI 29-11

SECTION 29, TOWNSHIP 10 SOUTH, RANGE 22 WEST OF THE 6TH PRINCIPAL MERIDIAN



### NAD 83 LATITUDE AND LONGITUDE

BLASI 29-11 SURFACE HOLE:  
LATITUDE: N39.15148°  
LONGITUDE: W99.80476°  
ELEVATION: 2343'  
FOOTAGE: 1744' FSL, 1554' FWL  
OTR/OTR: NE4/SW4  
DATE: 10/8/2013

IN ACCORDANCE WITH A REQUEST FROM MELVAIN ENERGY INC., DALEY LAND SURVEYING, INC. HAS DETERMINED THE SURFACE LOCATION OF THE BLASI 29-11 WELL TO BE 1744' FSL, 1554' FWL, AS MEASURED AT NINETY (90) DEGREES FROM THE SECTION LINES OF SECTION 29, TOWNSHIP 10 SOUTH, RANGE 22 WEST, OF THE 6TH PRINCIPAL MERIDIAN, GRAHAM COUNTY, KANSAS.

#### NOTES:

- 1) HORIZONTAL DATUM IS NAD83.
- 2) VERTICAL DATUM IS NAVD88 AND ORIGINATES FROM N.G.S. BENCHMARK X-301 NETWORK, UTILIZING THE GEOD09 MODEL.
- 3) SURFACE USE: AGRICULTURAL.
- 4) THIS MAP DOES NOT REPRESENT A BOUNDARY SURVEY, IT IS NOT A LAND SURVEY PLAT OR AN IMPROVEMENT SURVEY PLAT AND IT IS NOT TO BE RELED UPON FOR THE ESTABLISHMENT OF FENCE, BUILDING OR OTHER FUTURE IMPROVEMENT LINES.
- 5) AN ADDITIONAL STAKE WAS SET AT 1710' FSL, 1520' FWL.  
LATITUDE: N39.15139°  
LONGITUDE: W99.80488

DALEY LAND SURVEYING, INC.      PARKER, CO. 80134      303 953 9841

# ACCESS ROAD MAP BLASI 29-11

SECTION 29, TOWNSHIP 10 SOUTH, RANGE 22 WEST OF THE 6TH PRINCIPAL MERIDIAN

