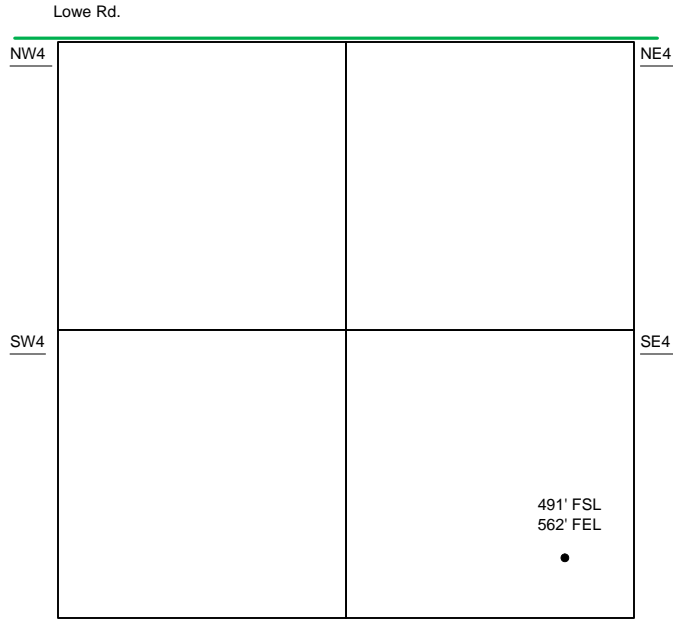
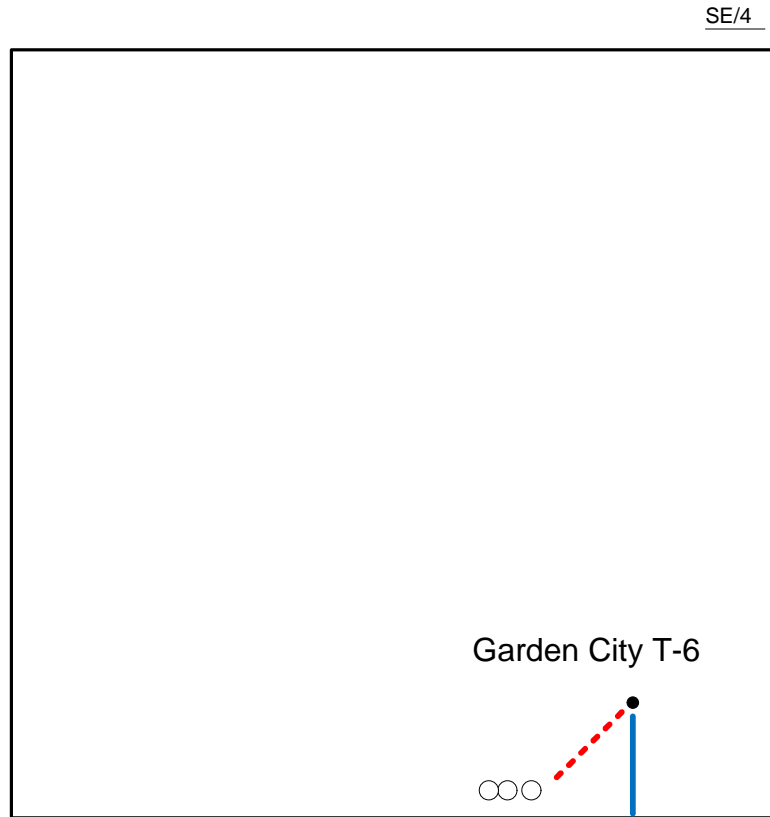


Proposed Plan of Construction
 Garden City T-6
 Sec 29 T23S-R34W
 Finney County, KS



Sec 29 – T23S – R34W



Proposed Details of
 SE/4 Sec 29-T23S -R34W

Note-Drawing **Not** to Scale

Proposed Site Diagram
 Garden City T-6
 October 30, 2013

