



DRILL STEM TEST REPORT

Prepared For: **Forestar Petroleum**

1801 Broadway STE 600
Denver, CO 80202

ATTN: Harley Davidson/Char

#1-26 Eldon

S26-16s-29w Lane,KS

Start Date: 2013.07.23 @ 17:45:00

End Date: 2013.07.24 @ 00:12:09

Job Ticket #: 52781 DST #: 1

Trilobite Testing, Inc

PO Box 362 Hays, KS 67601

ph: 785-625-4778 fax: 785-625-5620

Printed: 2013.07.29 @ 09:59:01



**TRILOBITE
TESTING, INC**

DRILL STEM TEST REPORT

Forestar Petroleum

S26-16s-29w Lane,KS

1801 Broadway STE 600
Denver, CO 80202

#1-26 Eldon

Job Ticket: 52781

DST#: 1

ATTN: Harley Davidson/Char

Test Start: 2013.07.23 @ 17:45:00

GENERAL INFORMATION:

Formation: **LKC 'H,I,J'**

Deviated: No Whipstock: ft (KB)

Time Tool Opened: 19:31:00

Time Test Ended: 00:12:09

Test Type: Conventional Bottom Hole (Initial)

Tester: Chuck Smith

Unit No: 62

Interval: 4120.00 ft (KB) To 4219.00 ft (KB) (TVD)

Reference Elevations: 2805.00 ft (KB)

Total Depth: 4219.00 ft (KB) (TVD)

2800.00 ft (CF)

Hole Diameter: 7.88 inches Hole Condition: Good

KB to GR/CF: 5.00 ft

Serial #: 8018

Inside

Press @ RunDepth: 52.88 psig @ 4122.00 ft (KB)

Capacity: 8000.00 psig

Start Date: 2013.07.23

End Date:

2013.07.24

Last Calib.:

2013.07.24

Start Time:

17:45:02

End Time:

00:12:10

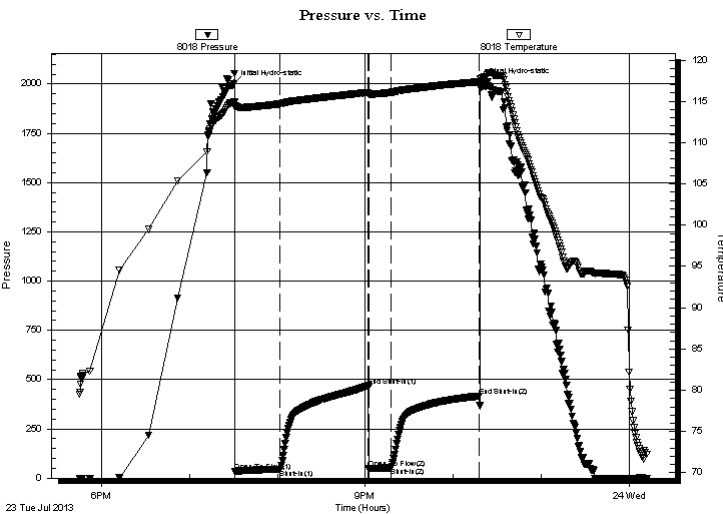
Time On Btm:

2013.07.23 @ 19:30:00

Time Off Btm:

2013.07.23 @ 22:19:20

TEST COMMENT: 1/4" Blow receded to weak surface blow .
No return.
No blow .
No return.



PRESSURE SUMMARY

Time (Min.)	Pressure (psig)	Temp (deg F)	Annotation
0	1999.16	114.83	Initial Hydro-static
1	33.91	114.32	Open To Flow (1)
32	46.41	114.69	Shut-In(1)
92	468.63	116.08	End Shut-In(1)
93	47.59	115.78	Open To Flow (2)
108	52.88	116.07	Shut-In(2)
168	416.57	117.37	End Shut-In(2)
170	2005.41	117.78	Final Hydro-static

Recovery

Length (ft)	Description	Volume (bbl)
70.00	OSM 100m	0.34

Gas Rates

	Choke (inches)	Pressure (psig)	Gas Rate (Mcf/d)



**TRILOBITE
TESTING, INC**

DRILL STEM TEST REPORT

TOOL DIAGRAM

Forestar Petroleum

S26-16s-29w Lane,KS

1801 Broadway STE 600
Denver, CO 80202

#1-26 Eldon

Job Ticket: 52781

DST#: 1

ATTN: Harley Davidson/Char

Test Start: 2013.07.23 @ 17:45:00

Tool Information

Drill Pipe:	Length: 4000.00 ft	Diameter: 3.80 inches	Volume: 56.11 bbl	Tool Weight: 2300.00 lb
Heavy Wt. Pipe:	Length: 0.00 ft	Diameter: inches	Volume: 0.00 bbl	Weight set on Packer: 22000.00 lb
Drill Collar:	Length: 123.00 ft	Diameter: 2.25 inches	Volume: 0.60 bbl	Weight to Pull Loose: 80000.00 lb
			<u>Total Volume: 56.71 bbl</u>	Tool Chased 0.00 ft
Drill Pipe Above KB:	30.50 ft			String Weight: Initial 42000.00 lb
Depth to Top Packer:	4120.00 ft			Final 42000.00 lb
Depth to Bottom Packer:	ft			
Interval between Packers:	99.00 ft			
Tool Length:	126.50 ft			
Number of Packers:	2	Diameter: 6.75 inches		

Tool Comments:

Tool Description

Tool Description	Length (ft)	Serial No.	Position	Depth (ft)	Accum. Lengths
Change Over Sub	1.00			4093.50	
Shut In Tool	5.00			4098.50	
Hydraulic tool	5.00			4103.50	
Jars	5.00			4108.50	
Safety Joint	2.50			4111.00	
Packer	5.00			4116.00	27.50 Bottom Of Top Packer
Packer	4.00			4120.00	
Stubb	1.00			4121.00	
Perforations	1.00			4122.00	
Recorder	0.00	8018	Inside	4122.00	
Recorder	0.00	6751	Outside	4122.00	
Perforations	1.00			4123.00	
Change Over Sub	1.00			4124.00	
Drill Pipe	91.00			4215.00	
Change Over Sub	1.00			4216.00	
Bullnose	3.00			4219.00	99.00 Bottom Packers & Anchor
Total Tool Length:	126.50				



**TRILOBITE
TESTING, INC**

DRILL STEM TEST REPORT

FLUID SUMMARY

Forestar Petroleum

S26-16s-29w Lane,KS

1801 Broadway STE 600
Denver, CO 80202

#1-26 Eldon

Job Ticket: 52781

DST#: 1

ATTN: Harley Davidson/Char

Test Start: 2013.07.23 @ 17:45:00

Mud and Cushion Information

Mud Type: Gel Chem

Cushion Type:

Oil API:

deg API

Mud Weight: 9.00 lb/gal

Cushion Length: ft

Water Salinity: ppm

Viscosity: 48.00 sec/qt

Cushion Volume: bbl

Water Loss: 7.96 in³

Gas Cushion Type:

Resistivity: ohm.m

Gas Cushion Pressure: psig

Salinity: 1500.00 ppm

Filter Cake: 1.00 inches

Recovery Information

Recovery Table

Length ft	Description	Volume bbl
70.00	OSM 100m	0.344

Total Length: 70.00 ft Total Volume: 0.344 bbl

Num Fluid Samples: 0

Num Gas Bombs: 0

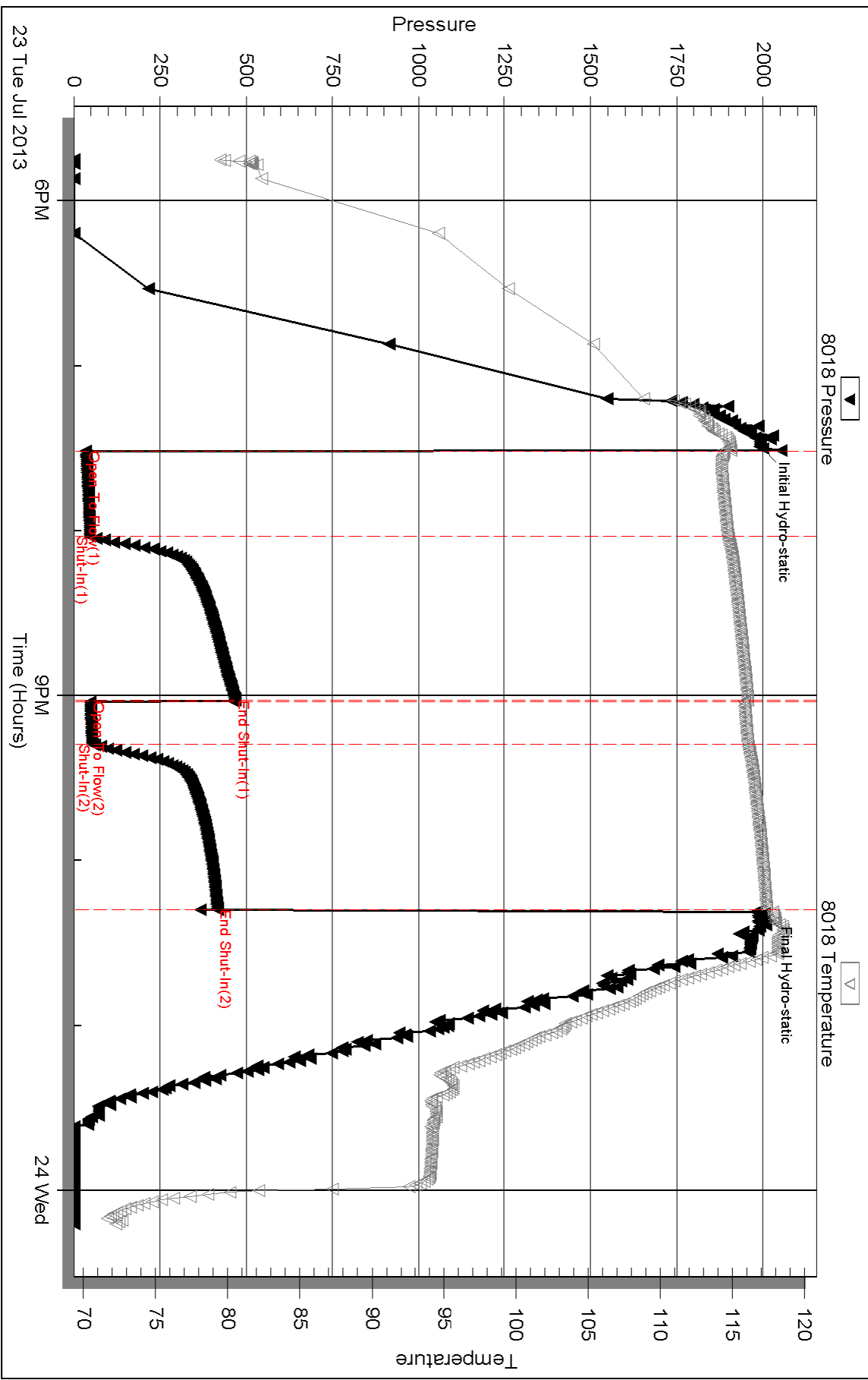
Serial #:

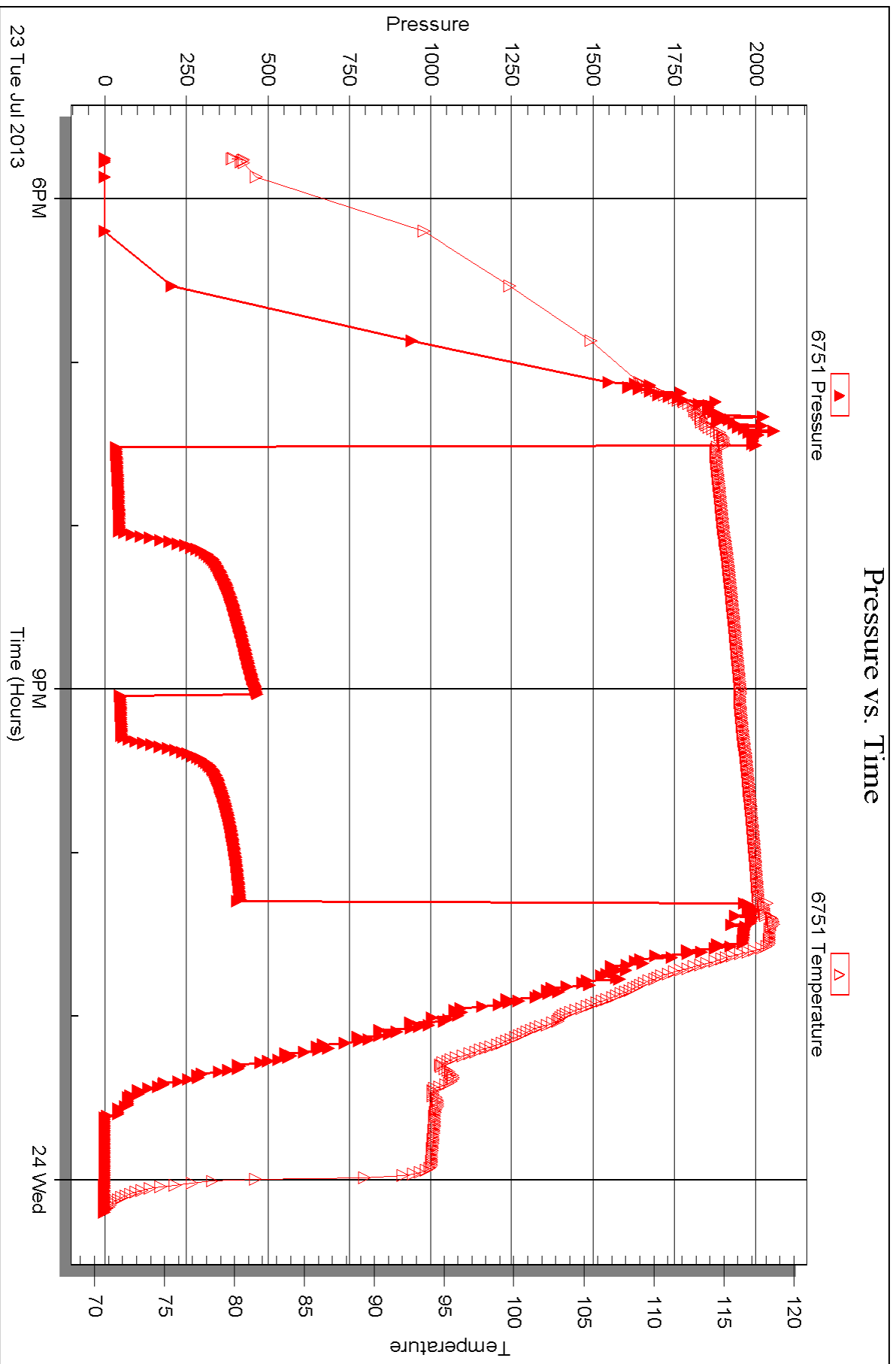
Laboratory Name:

Laboratory Location:

Recovery Comments:

Pressure vs. Time







DRILL STEM TEST REPORT

Prepared For: **Forestar Petroleum**

1801 Broadway STE 600
Denver, CO 80202

ATTN: Harley Davidson/Char

#1-26 Eldon

S26-16s-29w Lane,KS

Start Date: 2013.07.24 @ 18:45:00

End Date: 2013.07.25 @ 01:41:30

Job Ticket #: 52782 DST #: 2

Trilobite Testing, Inc

PO Box 362 Hays, KS 67601

ph: 785-625-4778 fax: 785-625-5620

Printed: 2013.07.29 @ 09:58:25



**TRILOBITE
TESTING, INC**

DRILL STEM TEST REPORT

Forestar Petroleum

S26-16s-29w Lane,KS

1801 Broadway STE 600
Denver, CO 80202

#1-26 Eldon

Job Ticket: 52782

DST#: 2

ATTN: Harley Davidson/Char

Test Start: 2013.07.24 @ 18:45:00

GENERAL INFORMATION:

Formation: **Lansing - Marmaton**

Deviated: No Whipstock: ft (KB)

Time Tool Opened: 20:18:20

Time Test Ended: 01:41:30

Test Type: Conventional Bottom Hole (Reset)

Tester: Chuck Smith

Unit No: 62

Interval: 4219.00 ft (KB) To 4368.00 ft (KB) (TVD)

Reference Elevations: 2805.00 ft (KB)

Total Depth: 4368.00 ft (KB) (TVD)

2800.00 ft (CF)

Hole Diameter: 7.88 inches Hole Condition: Good

KB to GR/CF: 5.00 ft

Serial #: 8018

Inside

Press @ Run Depth: 135.28 psig @ 4223.00 ft (KB)

Capacity: 8000.00 psig

Start Date: 2013.07.24

End Date:

2013.07.25

Last Calib.:

2013.07.25

Start Time: 18:45:02

End Time:

01:41:30

Time On Btm:

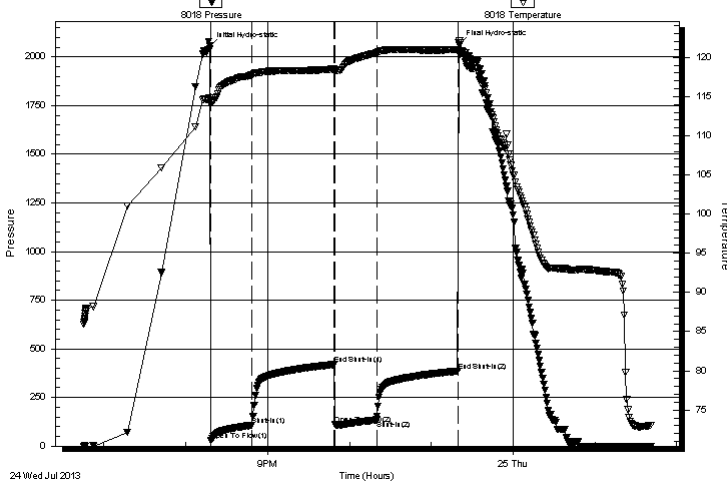
2013.07.24 @ 20:17:20

Time Off Btm:

2013.07.24 @ 23:20:39

TEST COMMENT: B.O.B. @ 11 min.
1/2" Return died @ 8 min.
B.O.B. @ 11 min.
3" Return died @ 47 min.

Pressure vs. Time



PRESSURE SUMMARY

Time (Min.)	Pressure (psig)	Temp (deg F)	Annotation
0	2055.12	114.78	Initial Hydro-static
1	27.82	114.00	Open To Flow (1)
32	107.23	117.72	Shut-In(1)
92	419.32	118.51	End Shut-In(1)
92	110.46	118.34	Open To Flow (2)
123	135.28	120.58	Shut-In(2)
183	385.41	120.99	End Shut-In(2)
184	2062.18	122.13	Final Hydro-static

Recovery

Length (ft)	Description	Volume (bbl)
0.00	310 GIP	0.00
61.00	GOCM 20g 5o 75m	0.30
124.00	GOCM 25g 30o 45m	1.17
124.00	GOCM 30g 35o 35m	1.74

Gas Rates

	Choke (inches)	Pressure (psig)	Gas Rate (Mcf/d)

* Recovery from multiple tests



TRILOBITE
TESTING, INC

DRILL STEM TEST REPORT

Forestar Petroleum

S26-16s-29w Lane, KS

1801 Broadway STE 600
Denver, CO 80202

#1-26 Eldon

Job Ticket: 52782

DST#: 2

ATTN: Harley Davidson/Char

Test Start: 2013.07.24 @ 18:45:00

GENERAL INFORMATION:

Formation: **Lansing - Marmaton**

Deviated: No Whipstock: ft (KB)

Time Tool Opened: 20:18:20

Time Test Ended: 01:41:30

Test Type: Conventional Bottom Hole (Reset)

Tester: Chuck Smith

Unit No: 62

Interval: 4219.00 ft (KB) To 4368.00 ft (KB) (TVD)

Reference Elevations: 2805.00 ft (KB)

Total Depth: 4368.00 ft (KB) (TVD)

2800.00 ft (CF)

Hole Diameter: 7.88 inches Hole Condition: Good

KB to GR/CF: 5.00 ft

Serial #: 6751 Outside

Press @ Run Depth: psig @ 4223.00 ft (KB)

Capacity: 8000.00 psig

Start Date: 2013.07.24

End Date:

2013.07.25

Last Calib.:

2013.07.25

Start Time: 18:45:05

End Time:

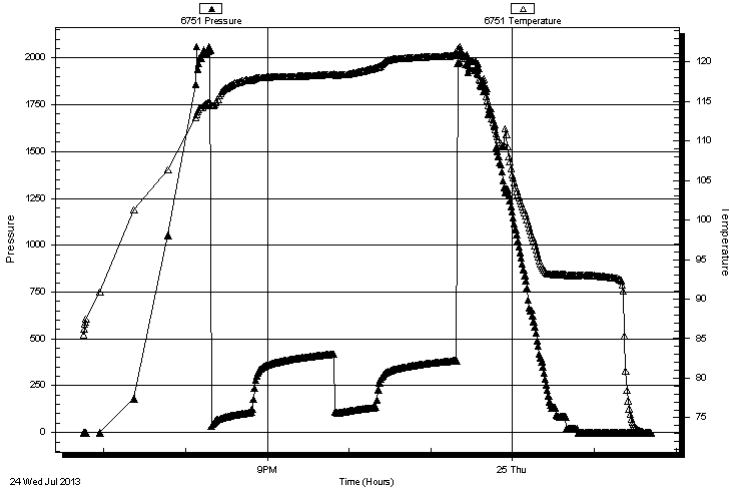
01:41:29

Time On Btm:

Time Off Btm:

TEST COMMENT: B.O.B. @ 11 min.
1/2" Return died @ 8 min.
B.O.B. @ 11 min.
3" Return died @ 47 min.

Pressure vs. Time



PRESSURE SUMMARY

Time (Min.)	Pressure (psig)	Temp (deg F)	Annotation
-------------	-----------------	--------------	------------

Recovery

Length (ft)	Description	Volume (bbl)
0.00	310 GIP	0.00
61.00	GOCM 20g 5o 75m	0.30
124.00	GOCM 25g 30o 45m	1.17
124.00	GOCM 30g 35o 35m	1.74

Gas Rates

	Choke (inches)	Pressure (psig)	Gas Rate (Mcf/d)
--	----------------	-----------------	------------------

* Recovery from multiple tests



**TRILOBITE
TESTING, INC**

DRILL STEM TEST REPORT

TOOL DIAGRAM

Forestar Petroleum

S26-16s-29w Lane,KS

1801 Broadway STE 600
Denver, CO 80202

#1-26 Eldon

Job Ticket: 52782

DST#: 2

ATTN: Harley Davidson/Char

Test Start: 2013.07.24 @ 18:45:00

Tool Information

Drill Pipe:	Length: 4096.00 ft	Diameter: 3.80 inches	Volume: 57.46 bbl	Tool Weight: 2300.00 lb
Heavy Wt. Pipe:	Length: 0.00 ft	Diameter: inches	Volume: 0.00 bbl	Weight set on Packer: 22000.00 lb
Drill Collar:	Length: 123.00 ft	Diameter: 2.25 inches	Volume: 0.60 bbl	Weight to Pull Loose: 80000.00 lb
			<u>Total Volume: 58.06 bbl</u>	Tool Chased 0.00 ft
Drill Pipe Above KB:	27.50 ft			String Weight: Initial 48000.00 lb
Depth to Top Packer:	4219.00 ft			Final 50000.00 lb
Depth to Bottom Packer:	ft			
Interval between Packers:	149.00 ft			
Tool Length:	176.50 ft			
Number of Packers:	2	Diameter: 6.75 inches		

Tool Comments:

Tool Description

Tool Description	Length (ft)	Serial No.	Position	Depth (ft)	Accum. Lengths
Change Over Sub	1.00			4192.50	
Shut In Tool	5.00			4197.50	
Hydraulic tool	5.00			4202.50	
Jars	5.00			4207.50	
Safety Joint	2.50			4210.00	
Packer	5.00			4215.00	27.50 Bottom Of Top Packer
Packer	4.00			4219.00	
Stubb	1.00			4220.00	
Perforations	3.00			4223.00	
Recorder	0.00	8018	Inside	4223.00	
Recorder	0.00	6751	Outside	4223.00	
Perforations	16.00			4239.00	
Change Over Sub	1.00			4240.00	
Drill Pipe	124.00			4364.00	
Change Over Sub	1.00			4365.00	
Bullnose	3.00			4368.00	149.00 Bottom Packers & Anchor
Total Tool Length:	176.50				



**TRILOBITE
TESTING, INC**

DRILL STEM TEST REPORT

FLUID SUMMARY

Forestar Petroleum

S26-16s-29w Lane,KS

1801 Broadway STE 600
Denver, CO 80202

#1-26 Eldon

Job Ticket: 52782

DST#: 2

ATTN: Harley Davidson/Char

Test Start: 2013.07.24 @ 18:45:00

Mud and Cushion Information

Mud Type: Gel Chem

Cushion Type:

Oil API:

deg API

Mud Weight: 9.00 lb/gal

Cushion Length:

ft

Water Salinity:

ppm

Viscosity: 48.00 sec/qt

Cushion Volume:

bbbl

Water Loss: 7.97 in³

Gas Cushion Type:

Resistivity: ohm.m

Gas Cushion Pressure:

psig

Salinity: 1800.00 ppm

Filter Cake: 1.00 inches

Recovery Information

Recovery Table

Length ft	Description	Volume bbbl
0.00	310 GIP	0.000
61.00	GOCM 20g 5o 75m	0.300
124.00	GOCM 25g 30o 45m	1.175
124.00	GOCM 30g 35o 35m	1.739

Total Length: 309.00 ft

Total Volume: 3.214 bbl

Num Fluid Samples: 0

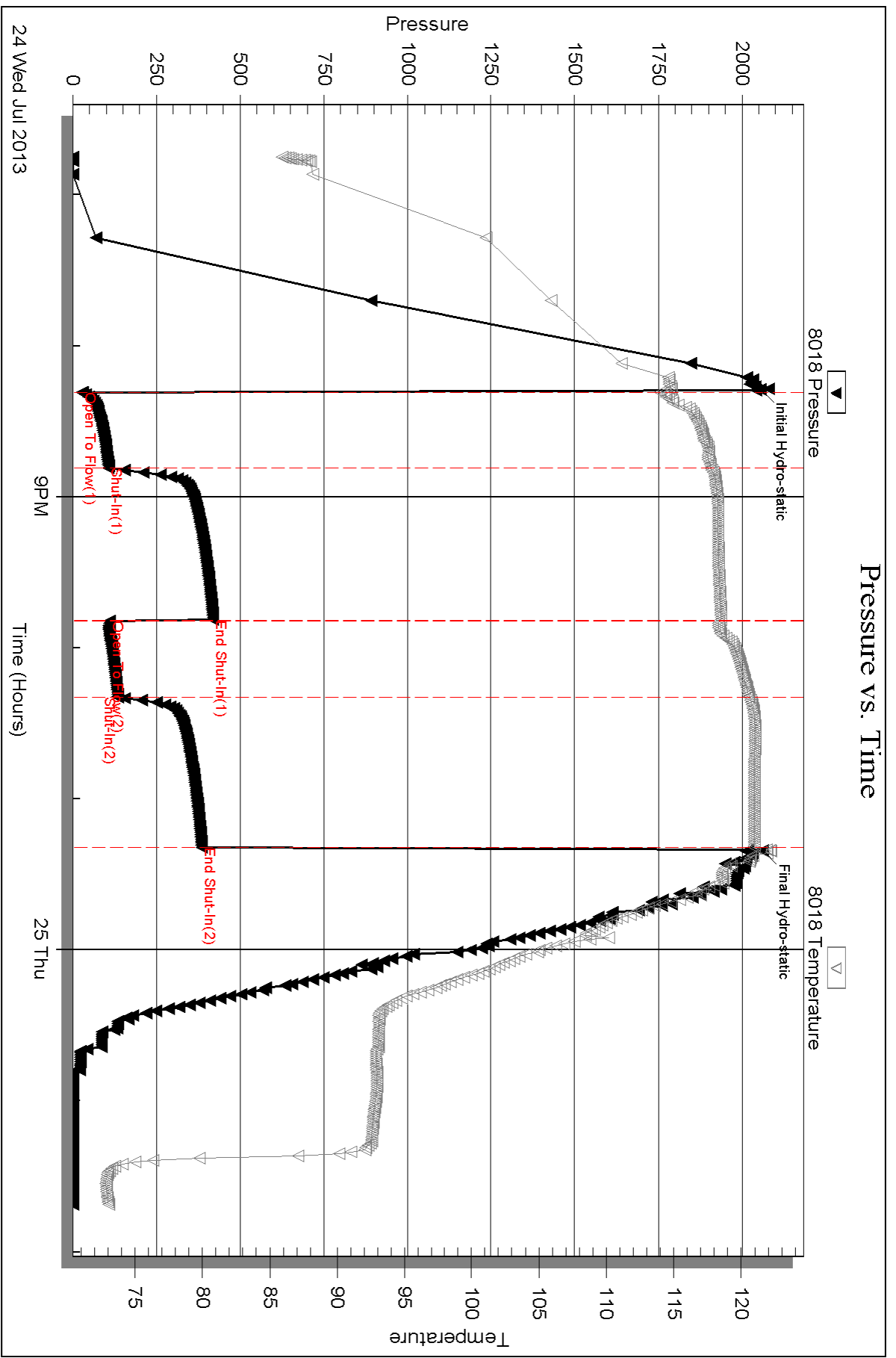
Num Gas Bombs: 0

Serial #:

Laboratory Name:

Laboratory Location:

Recovery Comments:

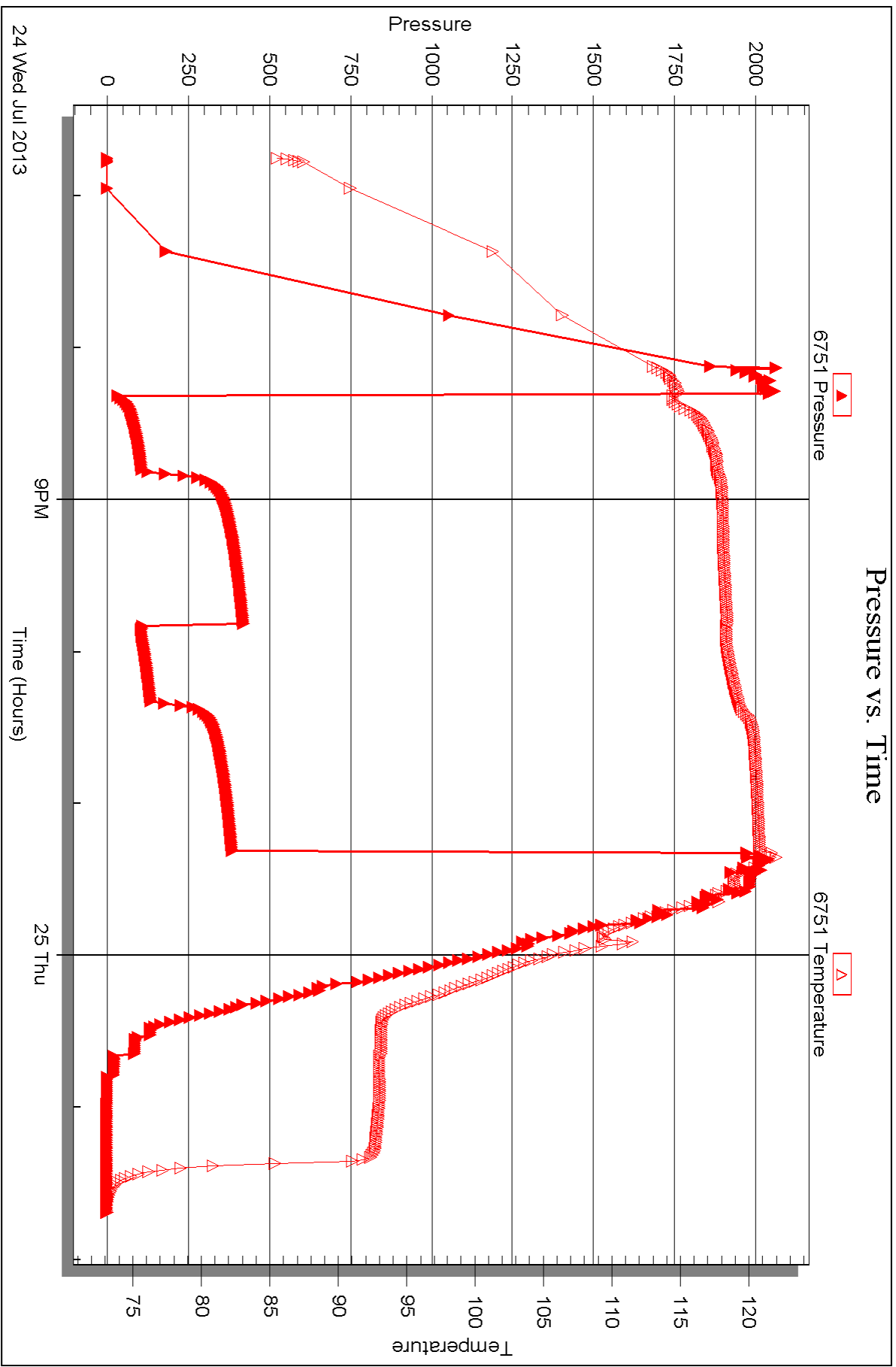


Serial #: 6751

Outside Forestar Petroleum

#1-26 Ebon

DST Test Number: 2





DRILL STEM TEST REPORT

Prepared For: **Forestar Petroleum**

1801 Broadway STE 600
Denver, CO 80202

ATTN: Harley Davidson/Char

#1-26 Eldon

S26-16s-29w Lane,KS

Start Date: 2013.07.25 @ 18:37:00

End Date: 2013.07.26 @ 00:49:09

Job Ticket #: 52783 DST #: 3

Trilobite Testing, Inc

PO Box 362 Hays, KS 67601

ph: 785-625-4778 fax: 785-625-5620

Printed: 2013.07.29 @ 09:57:48



**TRILOBITE
TESTING, INC**

DRILL STEM TEST REPORT

Forestar Petroleum

S26-16s-29w Lane,KS

1801 Broadway STE 600
Denver, CO 80202

#1-26 Eldon

Job Ticket: 52783

DST#: 3

ATTN: Harley Davidson/Char

Test Start: 2013.07.25 @ 18:37:00

GENERAL INFORMATION:

Formation: **Altamont - Cherokee**

Deviated: No Whipstock: ft (KB)

Time Tool Opened: 20:18:20

Time Test Ended: 00:49:09

Test Type: Conventional Bottom Hole (Reset)

Tester: Chuck Smith

Unit No: 62

Interval: 4366.00 ft (KB) To 4513.00 ft (KB) (TVD)

Reference Elevations: 2805.00 ft (KB)

Total Depth: 4513.00 ft (KB) (TVD)

2800.00 ft (CF)

Hole Diameter: 7.88 inches Hole Condition: Good

KB to GR/CF: 5.00 ft

Serial #: 8018

Inside

Press @ Run Depth: 32.37 psig @ 4368.00 ft (KB)

Capacity: 8000.00 psig

Start Date: 2013.07.25

End Date:

2013.07.26

Last Calib.:

2013.07.26

Start Time: 18:37:02

End Time:

00:49:10

Time On Btm:

2013.07.25 @ 20:16:50

Time Off Btm:

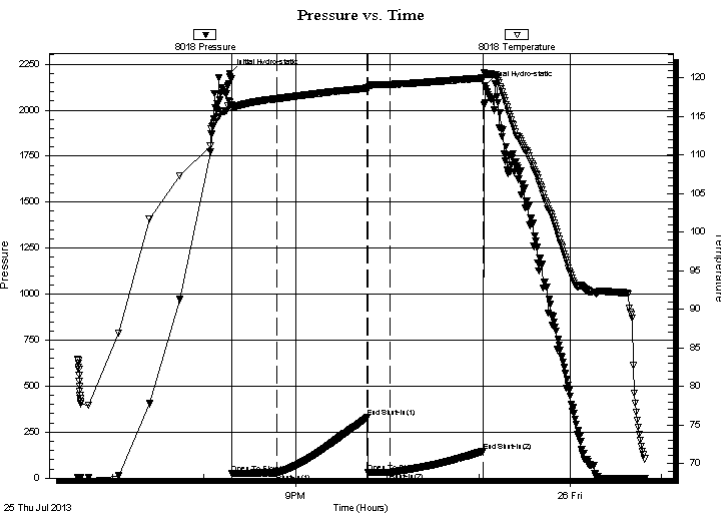
2013.07.25 @ 23:04:09

TEST COMMENT: 3/4" Blow died @ 16 min.

No return.

No blow.

No return.



PRESSURE SUMMARY

Time (Min.)	Pressure (psig)	Temp (deg F)	Annotation
0	2200.29	116.81	Initial Hydro-static
2	24.76	115.99	Open To Flow (1)
31	28.79	117.31	Shut-In(1)
90	329.55	118.69	End Shut-In(1)
91	30.64	118.48	Open To Flow (2)
105	32.37	119.17	Shut-In(2)
167	148.27	120.00	End Shut-In(2)
168	2134.49	120.55	Final Hydro-static

Recovery

Length (ft)	Description	Volume (bbl)
30.00	M 100m Oil spots in tool.	0.15

Gas Rates

	Choke (inches)	Pressure (psig)	Gas Rate (Mcf/d)

* Recovery from multiple tests



TRILOBITE TESTING, INC

DRILL STEM TEST REPORT

Forestar Petroleum

S26-16s-29w Lane,KS

1801 Broadway STE 600
Denver, CO 80202

#1-26 Eldon

Job Ticket: 52783

DST#: 3

ATTN: Harley Davidson/Char

Test Start: 2013.07.25 @ 18:37:00

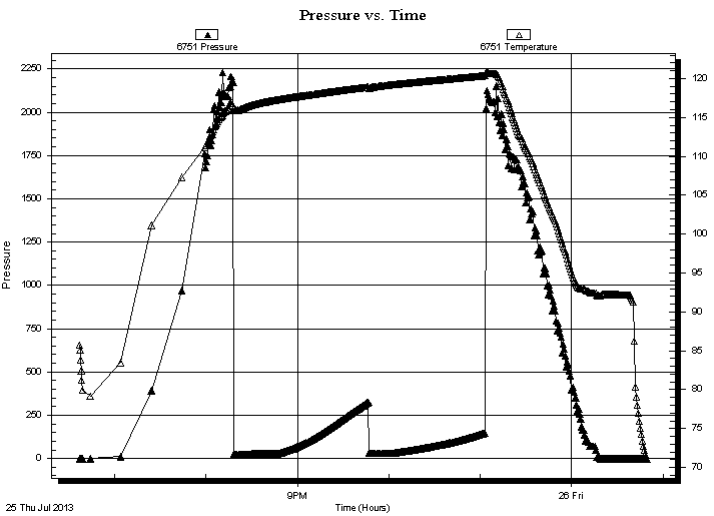
GENERAL INFORMATION:

Formation: Altamont - Cherokee	
Deviated: No Whipstock:	ft (KB)
Time Tool Opened: 20:18:20	Test Type: Conventional Bottom Hole (Reset)
Time Test Ended: 00:49:09	Tester: Chuck Smith
Interval: 4366.00 ft (KB) To 4513.00 ft (KB) (TVD)	Unit No: 62
Total Depth: 4513.00 ft (KB) (TVD)	Reference Elevations: 2805.00 ft (KB)
Hole Diameter: 7.88 inches	2800.00 ft (CF)
Hole Condition: Good	KB to GR/CF: 5.00 ft

Serial #: 6751 Outside

Press @ RunDepth: psig @ 4368.00 ft (KB)	Capacity: 8000.00 psig
Start Date: 2013.07.25	End Date: 2013.07.26
Start Time: 18:37:05	Last Calib.: 2013.07.26
	Time On Btm:
	Time Off Btm:

TEST COMMENT: 3/4" Blow died @ 16 min.
No return.
No blow.
No return.



PRESSURE SUMMARY

Time (Min.)	Pressure (psig)	Temp (deg F)	Annotation

Recovery

Length (ft)	Description	Volume (bbl)
30.00	M 100m Oil spots in tool.	0.15

* Recovery from multiple tests

Gas Rates

Choke (inches)	Pressure (psig)	Gas Rate (Mcf/d)



**TRILOBITE
TESTING, INC**

DRILL STEM TEST REPORT

TOOL DIAGRAM

Forestar Petroleum

S26-16s-29w Lane,KS

1801 Broadway STE 600
Denver, CO 80202

#1-26 Eldon

Job Ticket: 52783

DST#: 3

ATTN: Harley Davidson/Char

Test Start: 2013.07.25 @ 18:37:00

Tool Information

Drill Pipe:	Length: 4224.00 ft	Diameter: 3.80 inches	Volume: 59.25 bbl	Tool Weight: 2300.00 lb
Heavy Wt. Pipe:	Length: 0.00 ft	Diameter: inches	Volume: 0.00 bbl	Weight set on Packer: 22000.00 lb
Drill Collar:	Length: 123.00 ft	Diameter: 2.25 inches	Volume: 0.60 bbl	Weight to Pull Loose: 60000.00 lb
			<u>Total Volume: 59.85 bbl</u>	Tool Chased 0.00 ft
Drill Pipe Above KB:	8.50 ft			String Weight: Initial 50000.00 lb
Depth to Top Packer:	4366.00 ft			Final 50000.00 lb
Depth to Bottom Packer:	ft			
Interval between Packers:	147.00 ft			
Tool Length:	174.50 ft			
Number of Packers:	2	Diameter: 6.75 inches		

Tool Comments:

Tool Description

Tool Description	Length (ft)	Serial No.	Position	Depth (ft)	Accum. Lengths
Change Over Sub	1.00			4339.50	
Shut In Tool	5.00			4344.50	
Hydraulic tool	5.00			4349.50	
Jars	5.00			4354.50	
Safety Joint	2.50			4357.00	
Packer	5.00			4362.00	27.50 Bottom Of Top Packer
Packer	4.00			4366.00	
Stubb	1.00			4367.00	
Perforations	1.00			4368.00	
Recorder	0.00	8018	Inside	4368.00	
Recorder	0.00	6751	Outside	4368.00	
Perforations	16.00			4384.00	
Change Over Sub	1.00			4385.00	
Drill Pipe	124.00			4509.00	
Change Over Sub	1.00			4510.00	
Bullnose	3.00			4513.00	147.00 Bottom Packers & Anchor
Total Tool Length:	174.50				



**TRILOBITE
TESTING, INC**

DRILL STEM TEST REPORT

FLUID SUMMARY

Forestar Petroleum

S26-16s-29w Lane,KS

1801 Broadway STE 600
Denver, CO 80202

#1-26 Eldon

Job Ticket: 52783

DST#: 3

ATTN: Harley Davidson/Char

Test Start: 2013.07.25 @ 18:37:00

Mud and Cushion Information

Mud Type: Gel Chem

Cushion Type:

Oil API:

deg API

Mud Weight: 9.00 lb/gal

Cushion Length:

ft

Water Salinity:

ppm

Viscosity: 52.00 sec/qt

Cushion Volume:

bbbl

Water Loss: 7.98 in³

Gas Cushion Type:

Resistivity: ohm.m

Gas Cushion Pressure:

psig

Salinity: 1800.00 ppm

Filter Cake: 1.00 inches

Recovery Information

Recovery Table

Length ft	Description	Volume bbl
30.00	M 100m Oil spots in tool.	0.148

Total Length: 30.00 ft Total Volume: 0.148 bbl

Num Fluid Samples: 0

Num Gas Bombs: 0

Serial #:

Laboratory Name:

Laboratory Location:

Recovery Comments:

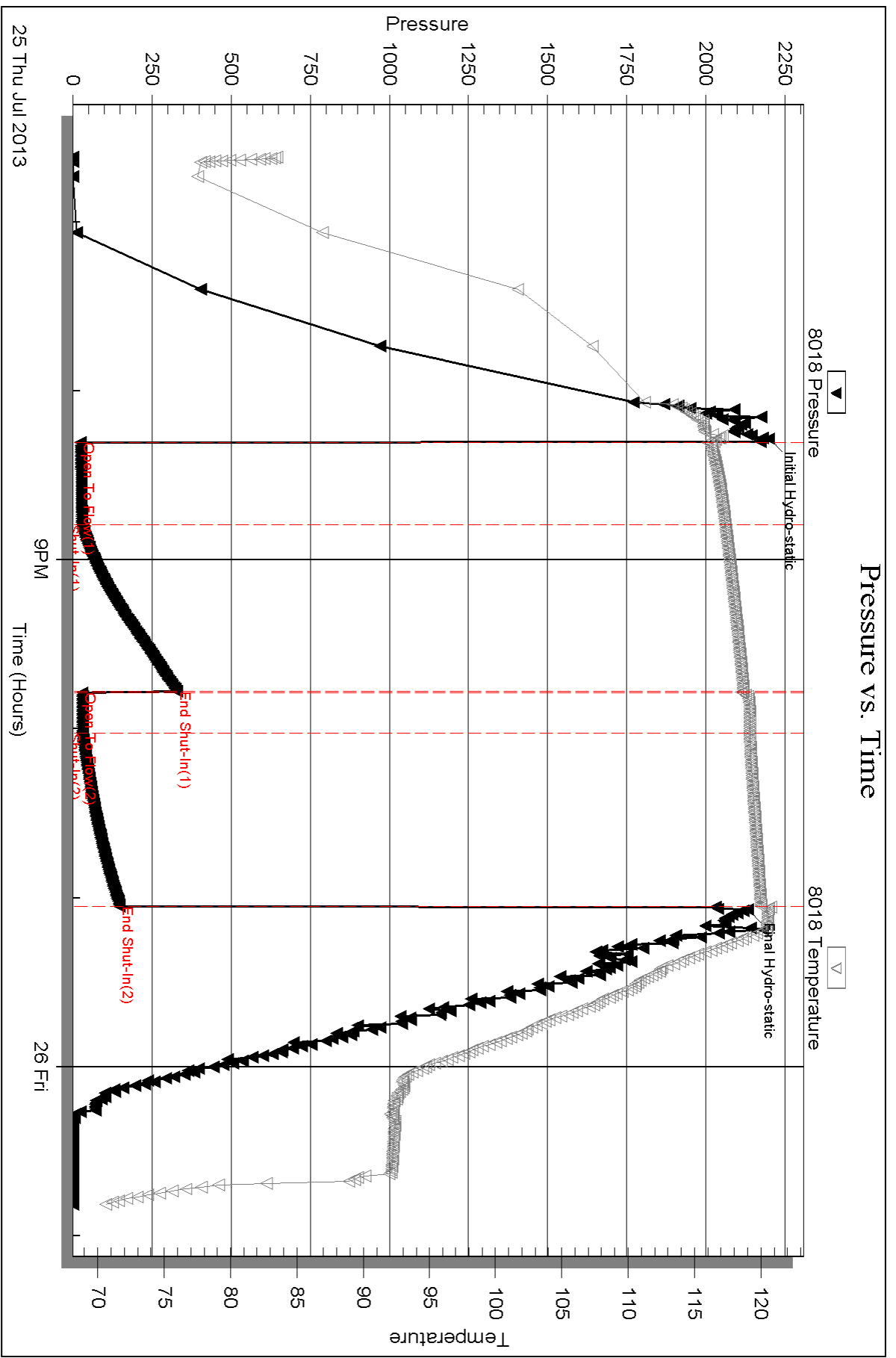
Serial #: 8018

Inside

Forestar Petroleum

#1-26 Edon

DST Test Number: 3

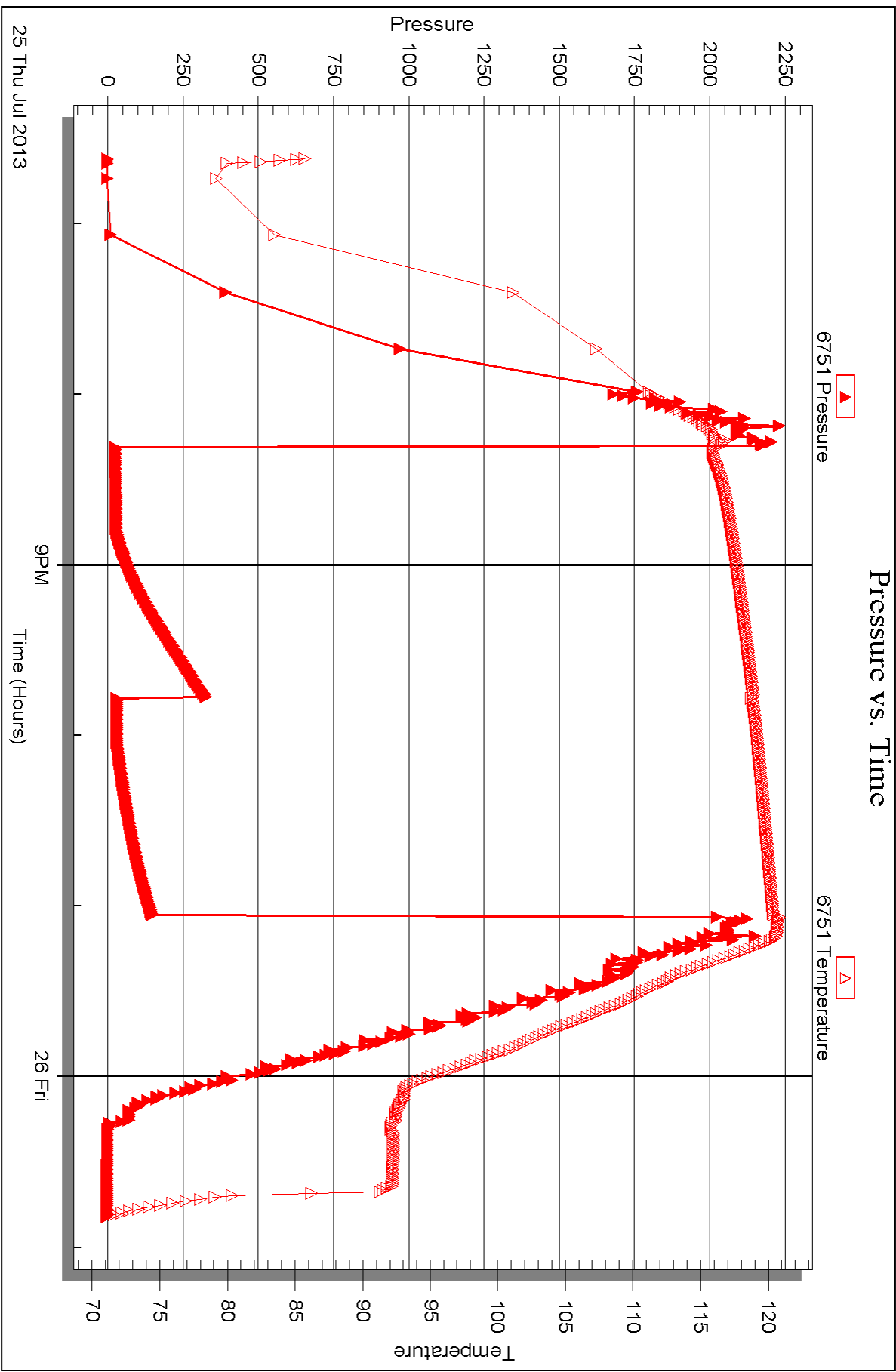


Serial #: 6751

Outside Forestar Petroleum

#1-26 Edon

DST Test Number: 3





DRILL STEM TEST REPORT

Prepared For: **Forestar Petroleum**

1801 Broadway STE 600
Denver, CO 80202

ATTN: Harley Davidson/Char

#1-26 Eldon

S26-16s-29w Lane,KS

Start Date: 2013.07.26 @ 09:30:00

End Date: 2013.07.26 @ 15:59:50

Job Ticket #: 52784 DST #: 4

Trilobite Testing, Inc
PO Box 362 Hays, KS 67601
ph: 785-625-4778 fax: 785-625-5620

Printed: 2013.07.29 @ 09:57:13



**TRILOBITE
TESTING, INC**

DRILL STEM TEST REPORT

Forestar Petroleum

S26-16s-29w Lane,KS

1801 Broadway STE 600
Denver, CO 80202

#1-26 Eldon

Job Ticket: 52784

DST#: 4

ATTN: Harley Davidson/Char

Test Start: 2013.07.26 @ 09:30:00

GENERAL INFORMATION:

Formation: **Johnson**

Deviated: No Whipstock: ft (KB)

Time Tool Opened: 11:20:20

Time Test Ended: 15:59:50

Test Type: Conventional Bottom Hole (Reset)

Tester: Chuck Smith

Unit No: 62

Interval: 4508.00 ft (KB) To 4538.00 ft (KB) (TVD)

Total Depth: 4538.00 ft (KB) (TVD)

Hole Diameter: 7.88 inches Hole Condition: Good

Reference Elevations: 2805.00 ft (KB)

2800.00 ft (CF)

KB to GR/CF: 5.00 ft

Serial #: 8018

Inside

Press @ RunDepth: 49.21 psig @ 4512.00 ft (KB)

Start Date: 2013.07.26

End Date:

2013.07.26

Start Time: 09:30:02

End Time:

15:59:49

Capacity: 8000.00 psig

Last Calib.: 2013.07.26

Time On Btm: 2013.07.26 @ 11:18:50

Time Off Btm: 2013.07.26 @ 14:09:09

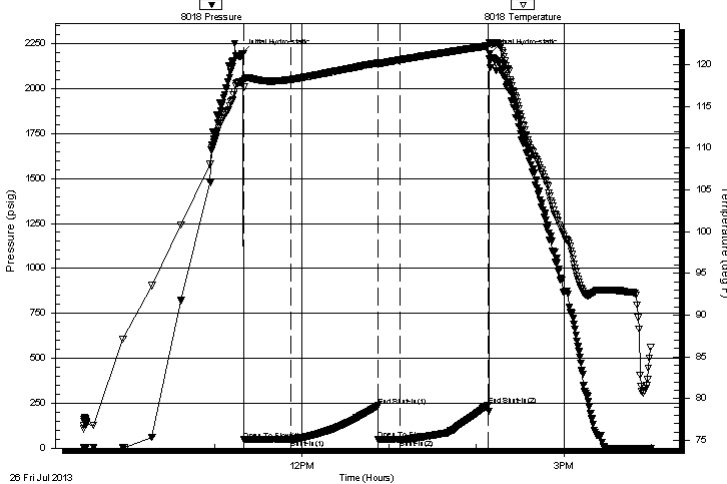
TEST COMMENT: 1" Blow died @ 18 min. Tool slid 3'

No return.

No blow.

No return.

Pressure vs. Time



PRESSURE SUMMARY

Time (Min.)	Pressure (psig)	Temp (deg F)	Annotation
0	2194.75	117.85	Initial Hydro-static
2	46.13	117.31	Open To Flow (1)
34	49.09	118.22	Shut-In(1)
94	235.96	120.21	End Shut-In(1)
94	48.66	120.10	Open To Flow (2)
109	49.21	120.57	Shut-In(2)
170	239.89	122.25	End Shut-In(2)
171	2196.78	122.66	Final Hydro-static

Recovery

Length (ft)	Description	Volume (bbl)
60.00	M100m Oil spots in tool.	0.30

Gas Rates

	Choke (inches)	Pressure (psig)	Gas Rate (Mcf/d)

* Recovery from multiple tests



TRILOBITE
TESTING, INC

DRILL STEM TEST REPORT

TOOL DIAGRAM

Forestar Petroleum

S26-16s-29w Lane,KS

1801 Broadway STE 600
Denver, CO 80202

#1-26 Eldon

Job Ticket: 52784

DST#: 4

ATTN: Harley Davidson/Char

Test Start: 2013.07.26 @ 09:30:00

Tool Information

Drill Pipe:	Length: 4380.00 ft	Diameter: 3.80 inches	Volume: 61.44 bbl	Tool Weight: 2300.00 lb
Heavy Wt. Pipe:	Length: 0.00 ft	Diameter: inches	Volume: 0.00 bbl	Weight set on Packer: 20000.00 lb
Drill Collar:	Length: 123.00 ft	Diameter: 2.25 inches	Volume: 0.60 bbl	Weight to Pull Loose: 70000.00 lb
			<u>Total Volume: 62.04 bbl</u>	Tool Chased 0.00 ft
Drill Pipe Above KB:	22.50 ft			String Weight: Initial 50000.00 lb
Depth to Top Packer:	4508.00 ft			Final 50000.00 lb
Depth to Bottom Packer:	ft			
Interval between Packers:	30.00 ft			
Tool Length:	57.50 ft			
Number of Packers:	2	Diameter: 6.75 inches		

Tool Comments:

Tool Description	Length (ft)	Serial No.	Position	Depth (ft)	Accum. Lengths
------------------	-------------	------------	----------	------------	----------------

Change Over Sub	1.00			4481.50	
Shut In Tool	5.00			4486.50	
Hydraulic tool	5.00			4491.50	
Jars	5.00			4496.50	
Safety Joint	2.50			4499.00	
Packer	5.00			4504.00	27.50 Bottom Of Top Packer
Packer	4.00			4508.00	
Stubb	1.00			4509.00	
Perforations	3.00			4512.00	
Recorder	0.00	8018	Inside	4512.00	
Recorder	0.00	6751	Outside	4512.00	
Perforations	23.00			4535.00	
Bullnose	3.00			4538.00	30.00 Bottom Packers & Anchor

Total Tool Length: 57.50



**TRILOBITE
TESTING, INC**

DRILL STEM TEST REPORT

FLUID SUMMARY

Forestar Petroleum

S26-16s-29w Lane,KS

1801 Broadway STE 600
Denver, CO 80202

#1-26 Eldon

Job Ticket: 52784

DST#: 4

ATTN: Harley Davidson/Char

Test Start: 2013.07.26 @ 09:30:00

Mud and Cushion Information

Mud Type: Gel Chem

Cushion Type:

Oil API:

deg API

Mud Weight: 9.00 lb/gal

Cushion Length:

ft

Water Salinity:

ppm

Viscosity: 50.00 sec/qt

Cushion Volume:

bbbl

Water Loss: 9.18 in³

Gas Cushion Type:

Resistivity: ohm.m

Gas Cushion Pressure:

psig

Salinity: 2400.00 ppm

Filter Cake: 1.00 inches

Recovery Information

Recovery Table

Length ft	Description	Volume bbl
60.00	M 100m Oil spots in tool.	0.295

Total Length: 60.00 ft Total Volume: 0.295 bbl

Num Fluid Samples: 0

Num Gas Bombs: 0

Serial #:

Laboratory Name:

Laboratory Location:

Recovery Comments:

Serial #: 8018

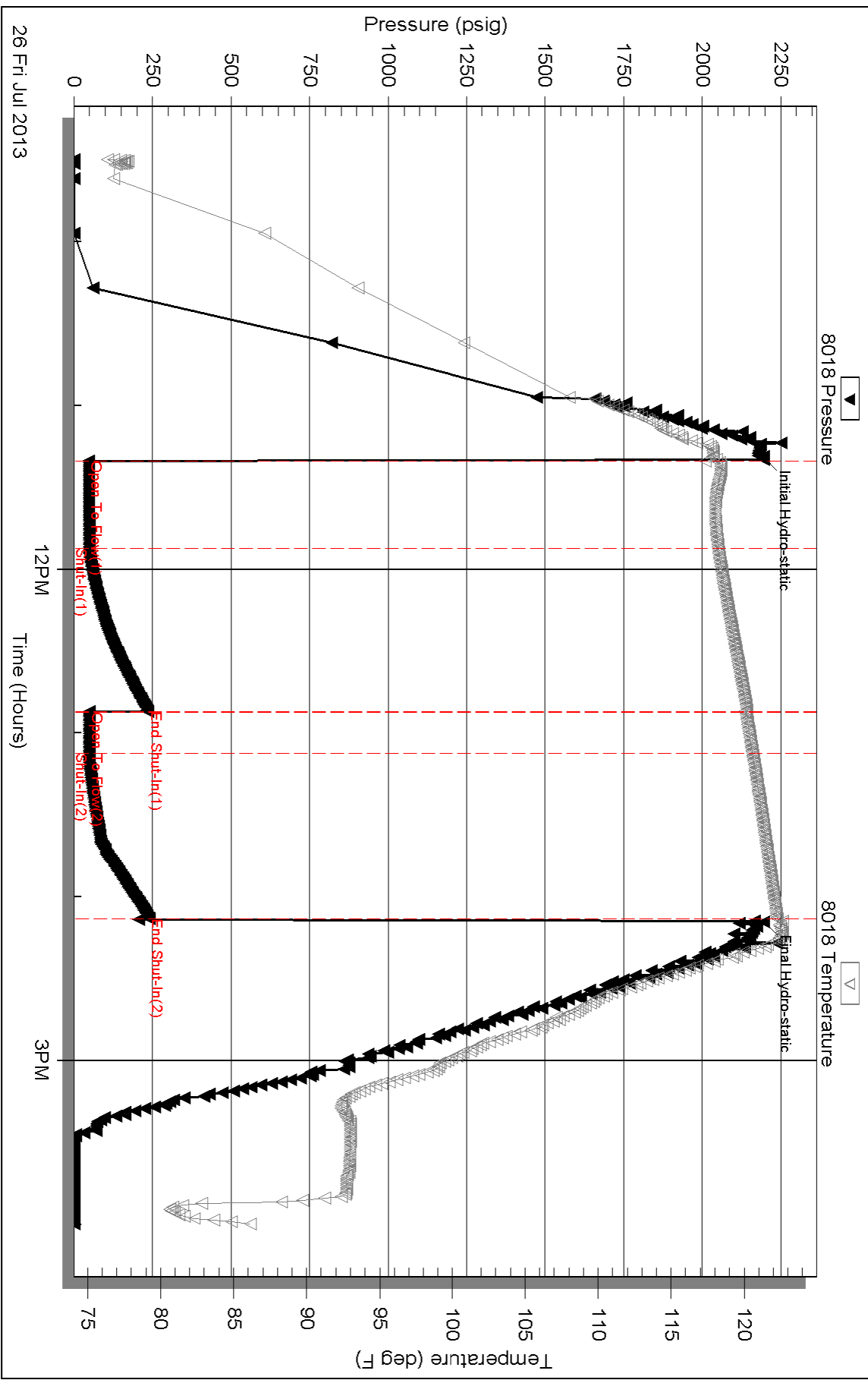
Inside

Forestar Petroleum

#1-26 Edon

DST Test Number: 4

Pressure vs. Time



Trilobite Testing, Inc

Ref. No: 52784

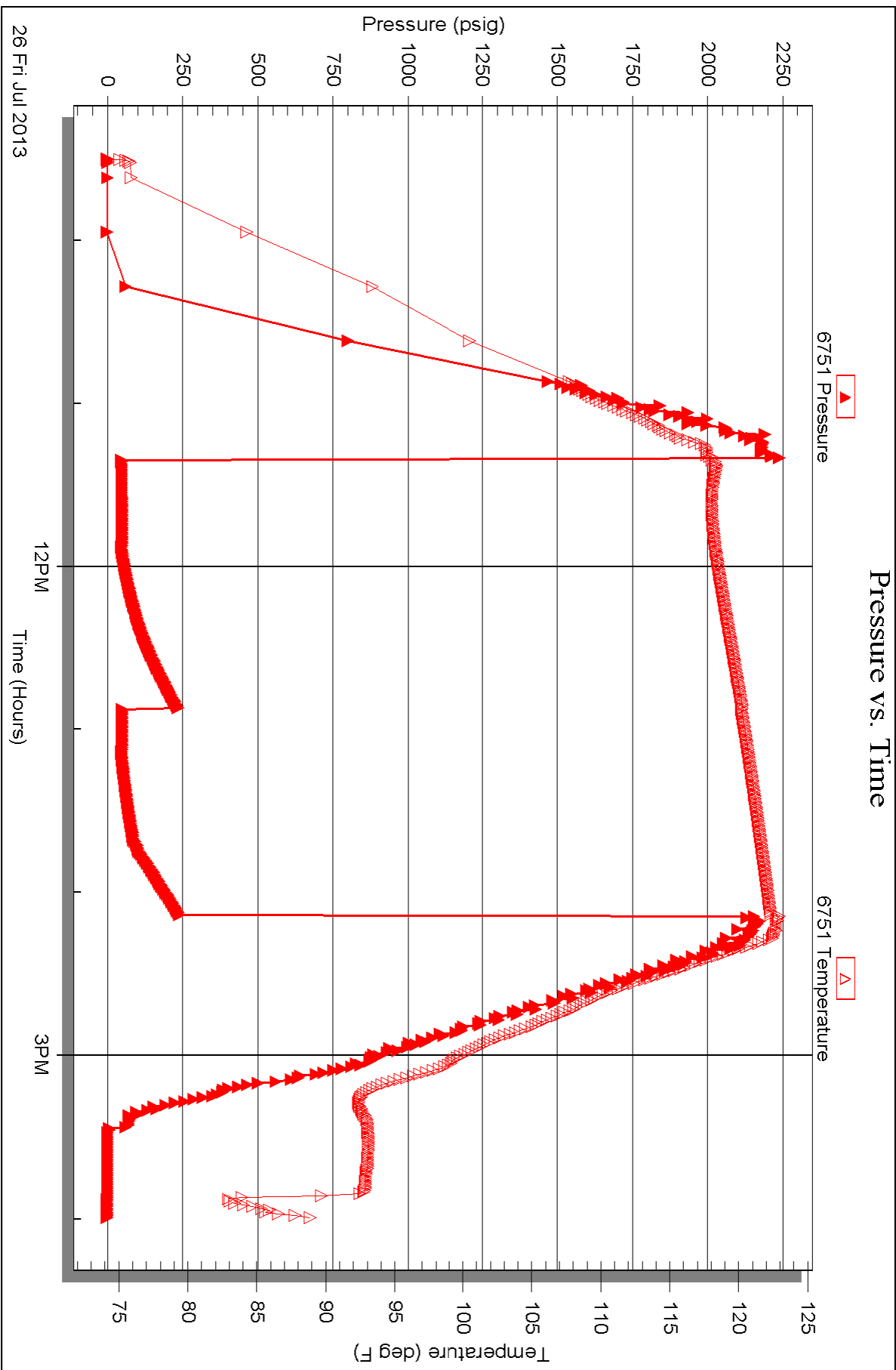
Printed: 2013.07.29 @ 09:57:15

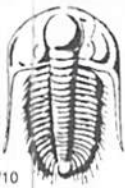
Serial #: 6751

Outside Forestar Petroleum

#1-26 Edon

DST Test Number: 4





TRILOBITE TESTING INC.

1515 Commerce Parkway • Hays, Kansas 67601

Test Ticket

NO. 52781

4/10

Well Name & No. #1-26 Elden Test No. 1 Date 7-23-13
 Company Forestar Petroleum Elevation 2805 KB 2800 GL
 Address _____
 Co. Rep / Geo. Harley Davidson / Charlie Sturdavant Rig WW#9
 Location: Sec. 26 Twp. 16 Rge. 29 Co. Lane State KS

Interval Tested 4120-4219 Zone Tested LKC H,I,J
 Anchor Length 99 Drill Pipe Run 4000 Mud Wt. 9.2
 Top Packer Depth 4116 Drill Collars Run 123 Vis 48
 Bottom Packer Depth 4120 Wt. Pipe Run - WL 8.0
 Total Depth 4219 Chlorides 1500 ppm System LCM 1 1/2"

Blow Description 1/4" Blow receded to weak surface blow.
No return.
No blow.
No return.

Rec	Feet of	%gas	%oil	%water	%mud
Rec <u>70</u>	Feet of <u>OSM</u>				<u>100</u>
Rec _____	Feet of _____				
Rec _____	Feet of _____				
Rec _____	Feet of _____				

Rec Total X 70 BHT 117 Gravity - API RW _____ @ _____ °F Chlorides - ppm

(A) Initial Hydrostatic <u>1999</u>	<input checked="" type="checkbox"/> Test 1250	T-On Location <u>17:30</u>
(B) First Initial Flow <u>34</u>	<input checked="" type="checkbox"/> Jars 250	T-Started <u>17:45</u>
(C) First Final Flow <u>46</u>	<input checked="" type="checkbox"/> Safety Joint 75	T-Open <u>19:31</u>
(D) Initial Shut-In <u>469</u>	<input checked="" type="checkbox"/> Circ Sub <u>N/C</u>	T-Pulled <u>22:18</u>
(E) Second Initial Flow <u>48</u>	<input type="checkbox"/> Hourly Standby _____	T-Out <u>00:12</u>
(F) Second Final Flow <u>53</u>	<input checked="" type="checkbox"/> Mileage <u>66RT</u> 102.30	Comments _____
(G) Final Shut-In <u>417</u>	<input type="checkbox"/> Sampler _____	_____
(H) Final Hydrostatic <u>2005</u>	<input type="checkbox"/> Straddle _____	<input type="checkbox"/> Ruined Shale Packer _____
Initial Open <u>30</u>	<input type="checkbox"/> Shale Packer _____	<input type="checkbox"/> Ruined Packer _____
Initial Shut-In <u>60</u>	<input type="checkbox"/> Extra Packer _____	<input type="checkbox"/> Extra Copies _____
Final Flow <u>15</u>	<input type="checkbox"/> Extra Recorder _____	Sub Total <u>0</u>
Final Shut-In <u>60</u>	<input type="checkbox"/> Day Standby _____	Total <u>1677.30</u>
	<input type="checkbox"/> Accessibility _____	MP/DST Disc't _____
	Sub Total <u>1677.30</u>	

Approved By Charlie Sturdavant Our Representative Chuck Smith

Trilobite Testing Inc. shall not be liable for damaged of any kind of the property or personnel of the one for whom a test is made, or for any loss suffered or sustained, directly or indirectly, through the use of its equipment, or its statements or opinion concerning the results of any test, tools lost or damaged in the hole shall be paid for at cost by the party for whom the test is made.



TRILOBITE TESTING INC.

1515 Commerce Parkway • Hays, Kansas 67601

Test Ticket

NO. 52782

4/10

Well Name & No. #1-26 Eldon Test No. 2 Date 7-24-13
 Company Forestar Petroleum Elevation 2805 KB 2800 GL
 Address 1801 Broadway STE 600 Denver, CO 80202
 Co. Rep / Geo. Harley Davidson / Charlie Sturdavant Rig WW#8
 Location: Sec. 26 Twp. 16 Rge. 29 Co. Lanc State KS

Interval Tested 4219 - 4368 Zone Tested Lansing - Marmaton
 Anchor Length 149 Drill Pipe Run 4096 Mud Wt. 9.4
 Top Packer Depth 4215 Drill Collars Run 123 Vis 48
 Bottom Packer Depth 4219 Wt. Pipe Run - WL 8.0
 Total Depth 4368 Chlorides 1800 ppm System LCM 1#
 Blow Description B.O.B. @ 11 min.
1/2" Return died @ 8 min.
B.O.B. @ 11 min.
3" Return died @ 47 min.

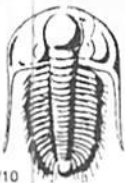
Rec	Feet of	%gas	%oil	%water	%mud
<u>124</u>		<u>30</u>	<u>35</u>		<u>35</u>
<u>124</u>	<u>GOCM</u>	<u>25</u>	<u>30</u>		<u>45</u>
<u>61</u>	<u>GOCM</u>	<u>20</u>	<u>5</u>		<u>75</u>
<u>-</u>	<u>310' GIP</u>				
<u>-</u>					

Rec Total 310 BHT 121 Gravity - API RW - @ - °F Chlorides - ppm

(A) Initial Hydrostatic 2055 Test 1250 T-On Location 18:30
 (B) First Initial Flow 28 Jars 250 T-Started 18:45
 (C) First Final Flow 107 Safety Joint 75 T-Open 20:18
 (D) Initial Shut-In 419 Circ Sub N/C T-Pulled 23:20
 (E) Second Initial Flow 110 Hourly Standby _____ T-Out 1:42
 (F) Second Final Flow 135 Mileage 66RT 102.30 Comments _____
 (G) Final Shut-In 385 Sampler _____
 (H) Final Hydrostatic 2062 Straddle _____ Ruined Shale Packer _____
 Shale Packer _____ Ruined Packer _____
 Extra Packer _____ Extra Copies _____
 Initial Open 30 Extra Recorder _____ Sub Total 0
 Initial Shut-In 60 Day Standby _____ Total 1677.30
 Final Flow 30 Accessibility _____ MP/DST Disc't _____
 Final Shut-In 60 Sub Total 1677.30

Approved By Charlie Sturdavant Our Representative Chuck Smith

Trilobite Testing Inc. shall not be liable for damaged of any kind of the property or personnel of the one for whom a test is made, or for any loss suffered or sustained, directly or indirectly, through the use of its equipment, or its statements or opinion concerning the results of any test, tools lost or damaged in the hole shall be paid for at cost by the party for whom the test is made.



TRILOBITE TESTING INC.

1515 Commerce Parkway • Hays, Kansas 67601

Test Ticket

NO. **52783**

4/10

Well Name & No. <u>#1-26 Eldon</u>	Test No. <u>3</u>	Date <u>7-25-13</u>
Company <u>Forestar Petroleum</u>	Elevation <u>2805</u>	KB <u>2800</u> GL
Address <u>1801 Broadway STE 600 Denver, CO 80202</u>		
Co. Rep / Geo. <u>Harley Davidson / Charlie Sturdawant</u>	Rig <u>WW# 8</u>	
Location: Sec. <u>26</u> Twp. <u>16</u> Rge. <u>29</u>	Co. <u>Lane</u>	State <u>KS</u>

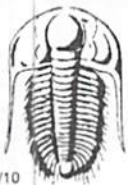
Interval Tested <u>4366 - 4513</u>	Zone Tested <u>Altamont - Cherokee</u>
Anchor Length <u>147</u>	Drill Pipe Run <u>4224</u> Mud Wt. <u>9.3</u>
Top Packer Depth <u>4362</u>	Drill Collars Run <u>123</u> Vis <u>52</u>
Bottom Packer Depth <u>4366</u>	Wt. Pipe Run <u>-</u> WL <u>8.0</u>
Total Depth <u>4513</u>	Chlorides <u>1800</u> ppm System LCM <u>2nd</u>
Blow Description <u>3/4" Blow died @ 16 min.</u>	
<u>No return.</u>	
<u>No blow.</u>	
<u>No return.</u>	

Rec	Feet of	%gas	%oil	%water	%mud
Rec	Feet of	%gas	%oil	%water	%mud
Rec <u>30</u>	Feet of <u>M oil spots in tool</u>	%gas	%oil	%water	<u>100</u> %mud
Rec	Feet of	%gas	%oil	%water	%mud
Rec	Feet of	%gas	%oil	%water	%mud

Rec Total <u>30</u>	BHT <u>120</u>	Gravity <u>-</u>	API RW <u>@</u>	° F Chlorides <u>-</u> ppm
(A) Initial Hydrostatic <u>2200</u>	<input checked="" type="checkbox"/> Test <u>1250</u>	T-On Location <u>18:30</u>		
(B) First Initial Flow <u>25</u>	<input checked="" type="checkbox"/> Jars <u>250</u>	T-Started <u>18:37</u>		
(C) First Final Flow <u>29</u>	<input checked="" type="checkbox"/> Safety Joint <u>75</u>	T-Open <u>20:18</u>		
(D) Initial Shut-In <u>330</u>	<input checked="" type="checkbox"/> Circ Sub <u>N/C</u>	T-Pulled <u>23:03</u>		
(E) Second Initial Flow <u>31</u>	<input type="checkbox"/> Hourly Standby	T-Out <u>00:49</u>		
(F) Second Final Flow <u>32</u>	<input checked="" type="checkbox"/> Mileage <u>102.30</u>	Comments		
(G) Final Shut-In <u>148</u>	<input type="checkbox"/> Sampler			
(H) Final Hydrostatic <u>2134</u>	<input type="checkbox"/> Straddle	<input type="checkbox"/> Ruined Shale Packer		
Initial Open <u>30</u>	<input type="checkbox"/> Shale Packer	<input type="checkbox"/> Ruined Packer		
Initial Shut-In <u>60</u>	<input type="checkbox"/> Extra Packer	<input type="checkbox"/> Extra Copies		
Final Flow <u>15</u>	<input type="checkbox"/> Extra Recorder	Sub Total <u>0</u>		
Final Shut-In <u>60</u>	<input type="checkbox"/> Day Standby	Total <u>1677.30</u>		
	<input type="checkbox"/> Accessibility	MP/DST Disc't		
	Sub Total <u>1677.30</u>			

Approved By Charlie Sturdawant Our Representative Chuck Smith

Trilobite Testing Inc. shall not be liable for damaged of any kind of the property or personnel of the one for whom a test is made, or for any loss suffered or sustained, directly or indirectly, through the use of its equipment, or its statements or opinion concerning the results of any test, tools lost or damaged in the hole shall be paid for at cost by the party for whom the test is made.



TRILOBITE TESTING INC.

1515 Commerce Parkway • Hays, Kansas 67601

Test Ticket

NO. 52784

4/10

Well Name & No. #1-26 Eldon Test No. 4 Date 7-26-13
 Company Forestar Petroleum Elevation 2805 KB 2800 GL
 Address 1801 Broadway SIE 600 Denver, CO 80202
 Co. Rep / Geo. Harley Davidson / Charlie Sturdavant Rig WW# 8
 Location: Sec. 26 Twp. 16 Rge. 29 Co. Lane State Ks

Interval Tested 4508-4538 Zone Tested Johnson
 Anchor Length 30 Drill Pipe Run 4380 Mud Wt. 9.3
 Top Packer Depth 4504 Drill Collars Run 123 Vis 50
 Bottom Packer Depth 4508 Wt. Pipe Run - WL 9.2
 Total Depth 4538 Chlorides 2400 ppm System LCM 1#
 Blow Description 1" Blow died @ 18 min. Tool slid 3'
No return.
No blow.
No return.

Rec	Feet of	%gas	%oil	%water	%mud
Rec <u>60</u>	Feet of <u>M Oil spots in tool</u>			<u>100</u>	
Rec	Feet of				
Rec	Feet of				
Rec	Feet of				

Rec Total 60 BHT 122 Gravity - API RW @ °F Chlorides - ppm

(A) Initial Hydrostatic <u>2195</u>	<input checked="" type="checkbox"/> Test <u>1250</u>	T-On Location <u>9:00</u>
(B) First Initial Flow <u>46</u>	<input checked="" type="checkbox"/> Jars <u>250</u>	T-Started <u>9:30</u>
(C) First Final Flow <u>49</u>	<input checked="" type="checkbox"/> Safety Joint <u>75</u>	T-Open <u>11:20</u>
(D) Initial Shut-In <u>236</u>	<input checked="" type="checkbox"/> Circ Sub <u>N/C</u>	T-Pulled <u>14:08</u>
(E) Second Initial Flow <u>49</u>	<input type="checkbox"/> Hourly Standby	T-Out <u>16:00</u>
(F) Second Final Flow <u>49</u>	<input checked="" type="checkbox"/> Mileage <u>X2</u> <u>204.60</u>	Comments <u>Picked up tool 7-27</u>
(G) Final Shut-In <u>240</u>	<input type="checkbox"/> Sampler	<u>11:00 am</u>
(H) Final Hydrostatic <u>2197</u>	<input type="checkbox"/> Straddle	<input type="checkbox"/> Ruined Shale Packer
Initial Open <u>30</u>	<input type="checkbox"/> Shale Packer	<input type="checkbox"/> Ruined Packer
Initial Shut-In <u>60</u>	<input type="checkbox"/> Extra Packer	<input type="checkbox"/> Extra Copies
Final Flow <u>15</u>	<input type="checkbox"/> Extra Recorder	Sub Total <u>0</u>
Final Shut-In <u>60</u>	<input type="checkbox"/> Day Standby	Total <u>1779.60</u>
	<input type="checkbox"/> Accessibility	MP/DST Disc't
	Sub Total <u>1779.60</u>	

Approved By Charlie Sturdavant Our Representative Chuck Smith

Trilobite Testing Inc. shall not be liable for damaged of any kind of the property or personnel of the one for whom a test is made, or for any loss suffered or sustained, directly or indirectly, through the use of its equipment, or its statements or opinion concerning the results of any test, tools lost or damaged in the hole shall be paid for at cost by the party for whom the test is made.