

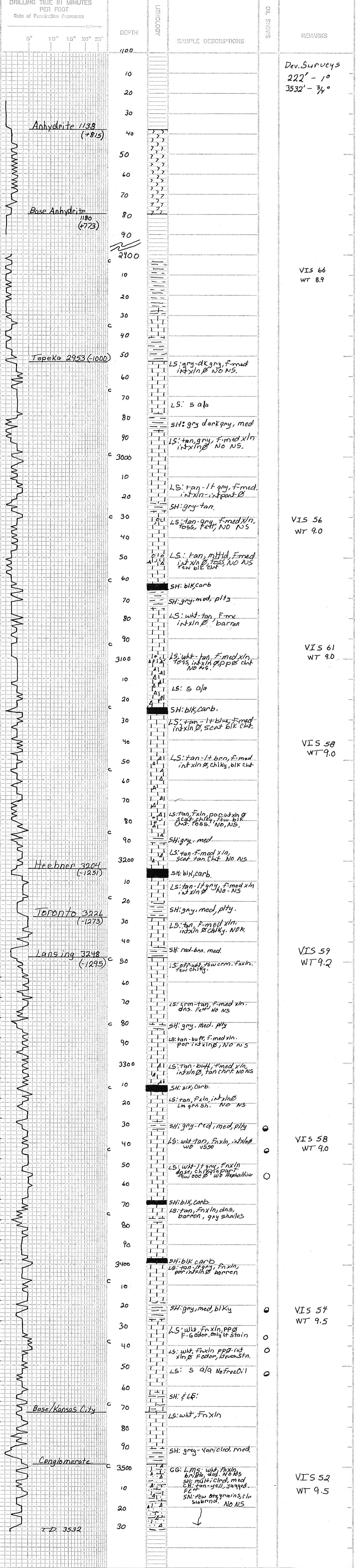
API #: 15-051-26611-00-00  
 COMPANY: Prairie Explorations, LLC  
 WELL: Albert #35-1  
 FIELD: Toulon  
 LOCATION: 680' FSL & 4950' FEL  
 SEC. 35 TWP 13S RGE 17W  
 COUNTY: Ellis STATE: Kansas  
 OPERATOR: Prairie Explorations, LLC  
 CONTRACTOR: Shields Drilling Co., Inc.  
 DATE: 10-10-2013  
 TOTAL DEPTH: 3532'  
 TOTAL DEPTH LOG: 3534'  
 FORMATION TOPS AND STRUCTURAL POSITION:  
 ANHYDRITE 1138 (+815)  
 BASE ANHYDRITE 1180 (+773)  
 TOPEKA 2953 (-1000)  
 HEEBNER 3204 (-1291)  
 TORONTO 3226 (-1273)  
 LANSING 3248 (-1295)  
 BASE/KANSAS CITY  
 CONGLOMERATE  
 2-D 3532

DATE	DEPTH	SIZE	TYPE	DEPTH	FEET	INCHES
10-10-13	Spudded	1	1 1/4" RR	222'	222'	6.5
10-11-13	222'	2	7/8" 5-5/8" TROSR	332'	332'	6.5
10-12-13	222'					
10-13-13	222'					
10-14-13	222'					
10-15-13	222'					
10-16-13	222'					

NO.	DEPTH	TYPE	REMARKS
1	222'	RR	
2	332'	7/8" 5-5/8" TROSR	

Due to running low to comparison well, lack of positive shows and logs the decision to plug & abandon this well.  
 Thank you!  
 Roger R. Moore

LEGEND



CONTRACTOR: Shields Drilling Co., Inc  
 LEASE: Albert IP: D/A  
 ELEVATION: 1953 KB RTD: 3532'  
 LOCATION: 680' FSL & 4950' FEL  
 SEC. 35 TWP 13S RGE 17W  
 COUNTY: Ellis STATE: Kansas