



GRAND MESA OPERATING COMPANY

(316) 265-3000 FAX: (316) 265-3455

1700 N. WATERFRONT PARKWAY BLDG. 600 WICHITA, KANSAS 67206-5514

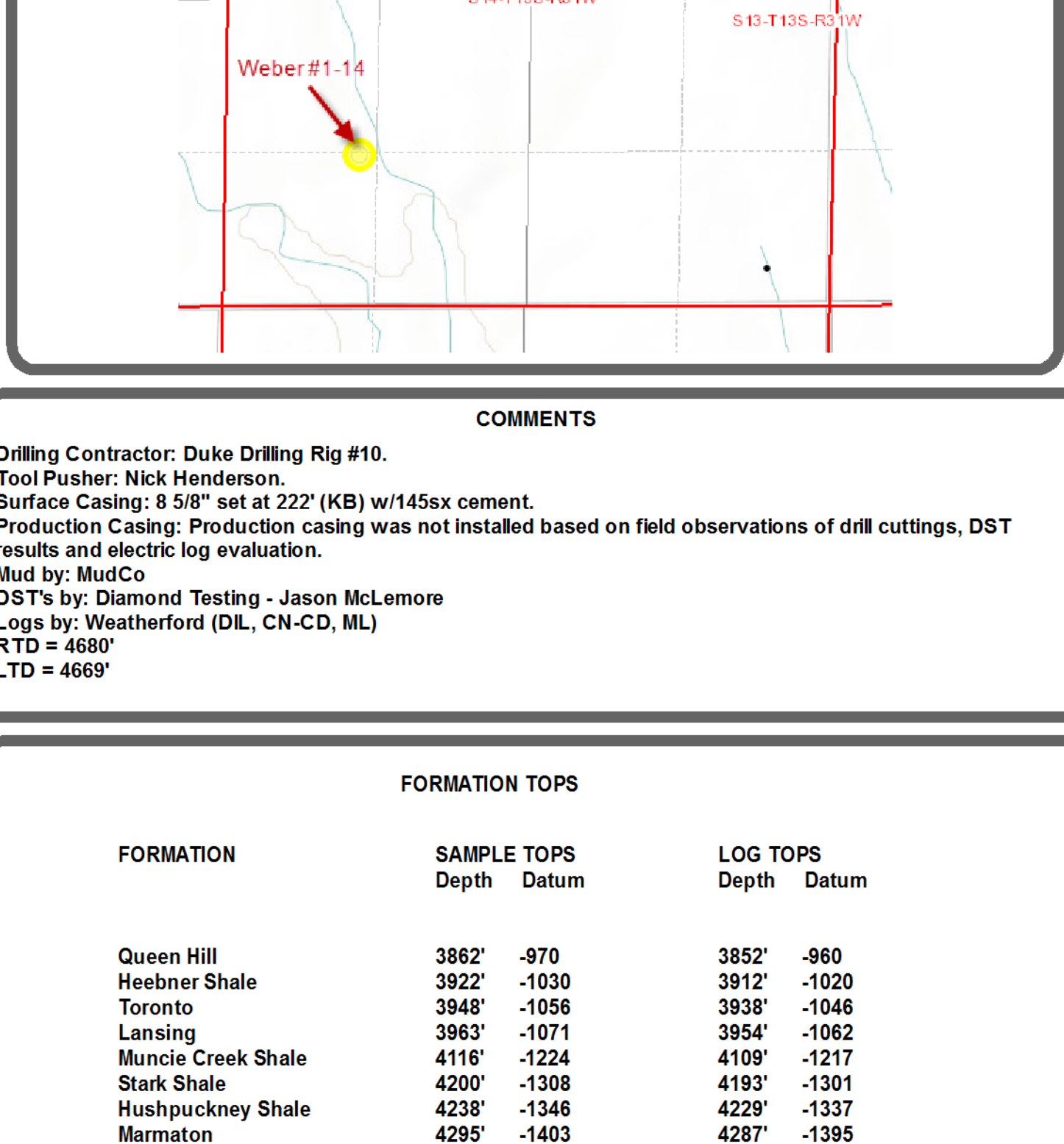
Scale 1:240 (5"=100') Imperial Measured Depth Log

Well Name: Weber 1-14 Location: 1306' FSL, 1170' FWL, Sec 14-T13S-R31W, Gove County, Kansas License Number: API: 15-063-22141 Region: Gove County Spud Date: 09/29/2013 Drilling Completed: 10/08/2013 Surface Coordinates: Lat: 38.9207428 Long: -100.7374392 Bottom Hole Coordinates: Vertical hole Ground Elevation (ft): 2881' K.B. Elevation (ft): 2892' Logged Interval (ft): 3800' To: RTD Total Depth (ft): 4680' Formation: Mississippian at RTD Type of Drilling Fluid: Chemical

Printed by MUD.LOG from WellSight Systems 1-800-447-1534 www.WellSight.com

GEOLOGIST

Name: Kent R. Matson Company: Matson Geological Services, LLC Address: 33300 W. 15th Street S. Garden Plain, Kansas 67050 316-644-1975



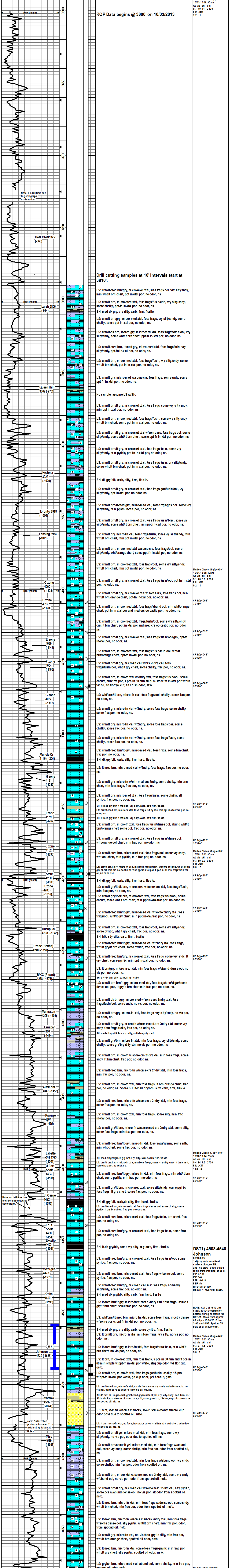
COMMENTS

Drilling Contractor: Duke Drilling Rig #10. Tool Pusher: Nick Henderson. Surface Casing: 8 5/8" set at 222' (KB) w/145x cement. Production Casing: Production casing was not installed based on field observations of drill cuttings, DST results and electric log evaluation. Mud by: MudCo DST's by: Diamond Testing - Jason McLemore Logs by: Weatherford (DL, CN-CD, ML) RTD = 4680' LTD = 4669'

FORMATION TOPS

Table with columns: FORMATION, SAMPLE TOPS (Depth, Datum), LOG TOPS (Depth, Datum)

Note: Log Tops are higher than Sample Tops due to the E-log TD being 11' shallower than the drilling log.



DST1) 4508-4540

1141 vry wk intermittent surface blow, no BS. 200' No blow - dead, pulled 2' into final shut-in. 15P 24F FFP 10-11F FFP na NP 2178-2148F Recv D: mud well scum

NOTE: ATTD @ 4540' bit stuck at 4040' coming off bottom during short trip for DST #1. Stuck from approx 08:45 min 10/08/2013 thru 3:00 am 10/07. Spotted 70 bbls of oil as cleanup.