

ADVANTAGE ELEVATIONS

OIL FIELD SURVEYORS

BOX 8604 - PRATT, KS 67124
(620) 672-6491

107133

INVOICE NO.

MURFIN DRILLING CO INC
OPERATOR

1-5
NO.

TEICHMAN OWWO
FARM

Stafford
COUNTY

5 22s 12w
S T R

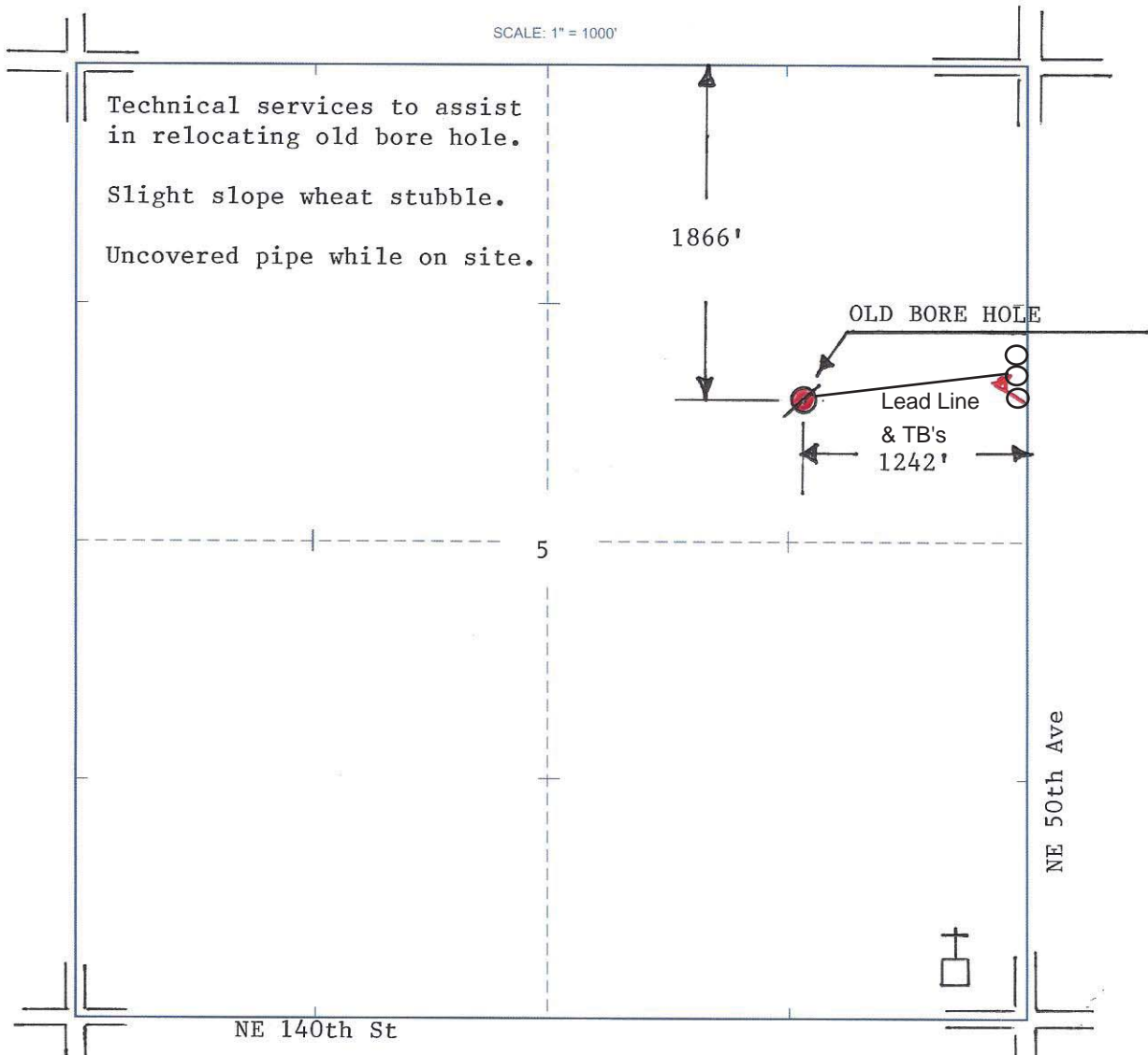
1866' FNL & 1242' FEL of Sec.
LOCATION

ELEVATION: 1867' GR



MURFIN DRILLING CO INC
250 N Water St., Ste 300
Wichita, KS 67202

AUTHORIZED BY: Shauna Gunzelman



DATE STAKED: 10/17/13

