



TRILOBITE TESTING, INC.

DRILL STEM TEST REPORT

Samuel Gary Jr & Associates

25-14s-18w

1515 Wynkoop Ste 700
Denver Co 80202

Lawrence 1-25

Job Ticket: 041060

DST#: 1

ATTN: Chris Mitchell

Test Start: 2013.07.16 @ 20:28:03

GENERAL INFORMATION:

Formation: **Lansing-F**

Deviated: No Whipstock: ft (KB)

Time Tool Opened: 22:25:33

Time Test Ended: 03:25:03

Test Type: Conventional Bottom Hole (Initial)

Tester: Jeff Brown

Unit No: 67

Interval: 3320.00 ft (KB) To 3355.00 ft (KB) (TVD)

Reference Elevations: 1976.00 ft (KB)

Total Depth: 3355.00 ft (KB) (TVD)

1966.00 ft (CF)

Hole Diameter: 7.88 inches Hole Condition: Good

KB to GR/CF: 10.00 ft

Serial #: 6625 Inside

Press @ Run Depth: 45.99 psig @ 3323.00 ft (KB)

Capacity: 8000.00 psig

Start Date: 2013.07.16

End Date:

2013.07.17

Last Calib.: 2013.07.17

Start Time: 20:28:04

End Time:

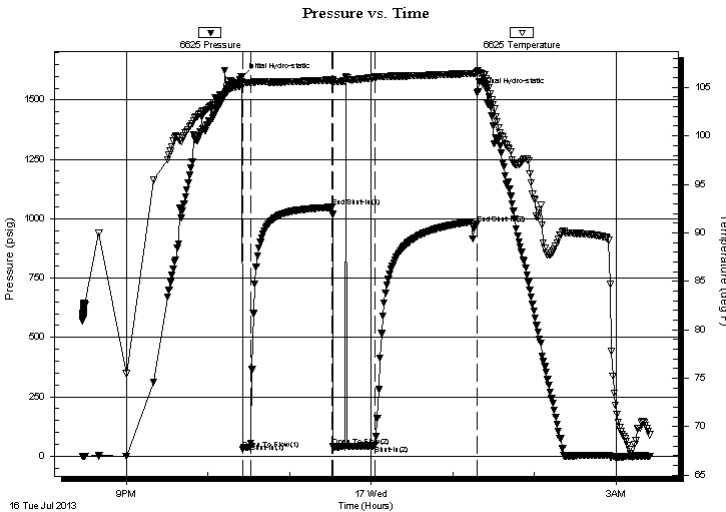
03:25:03

Time On Btm: 2013.07.16 @ 22:25:03

Time Off Btm: 2013.07.17 @ 01:18:03

TEST COMMENT: IFP=5-Min=Fair blow built to 4-3/4 in
ISI=60-Min=Dead no blow back
FFP=30-min=Dead-Flushed Tool -Surged Then died
FSI=60-Min=Dead no blow back

PRESSURE SUMMARY



Time (Min.)	Pressure (psig)	Temp (deg F)	Annotation
0	1595.30	105.62	Initial Hydro-static
1	27.96	105.35	Open To Flow (1)
7	53.14	105.48	Shut-In(1)
66	1048.71	105.77	End Shut-In(1)
67	40.45	105.63	Open To Flow (2)
98	45.99	106.05	Shut-In(2)
173	977.19	106.46	End Shut-In(2)
173	1530.85	106.67	Final Hydro-static

Recovery

Length (ft)	Description	Volume (bbl)
60.00	Mud w ih oil spots	0.84

Gas Rates

	Choke (inches)	Pressure (psig)	Gas Rate (Mcf/d)



**TRILOBITE
TESTING, INC.**

DRILL STEM TEST REPORT

FLUID SUMMARY

Samuel Gary Jr & Associates

25-14s-18w

1515 Wynkoop Ste 700
Denver Co 80202

Lawrence 1-25

Job Ticket: 041060

DST#: 1

ATTN: Chris Mitchell

Test Start: 2013.07.16 @ 20:28:03

Mud and Cushion Information

Mud Type: Gel Chem

Cushion Type:

Oil API:

deg API

Mud Weight: 9.00 lb/gal

Cushion Length:

ft

Water Salinity:

ppm

Viscosity: 60.00 sec/qt

Cushion Volume:

bbbl

Water Loss: 7.20 in³

Gas Cushion Type:

Resistivity: ohm.m

Gas Cushion Pressure:

psig

Salinity: 2000.00 ppm

Filter Cake: inches

Recovery Information

Recovery Table

Length ft	Description	Volume bbl
60.00	Mud w ih oil spots	0.842

Total Length: 60.00 ft Total Volume: 0.842 bbl

Num Fluid Samples: 0

Num Gas Bombs: 0

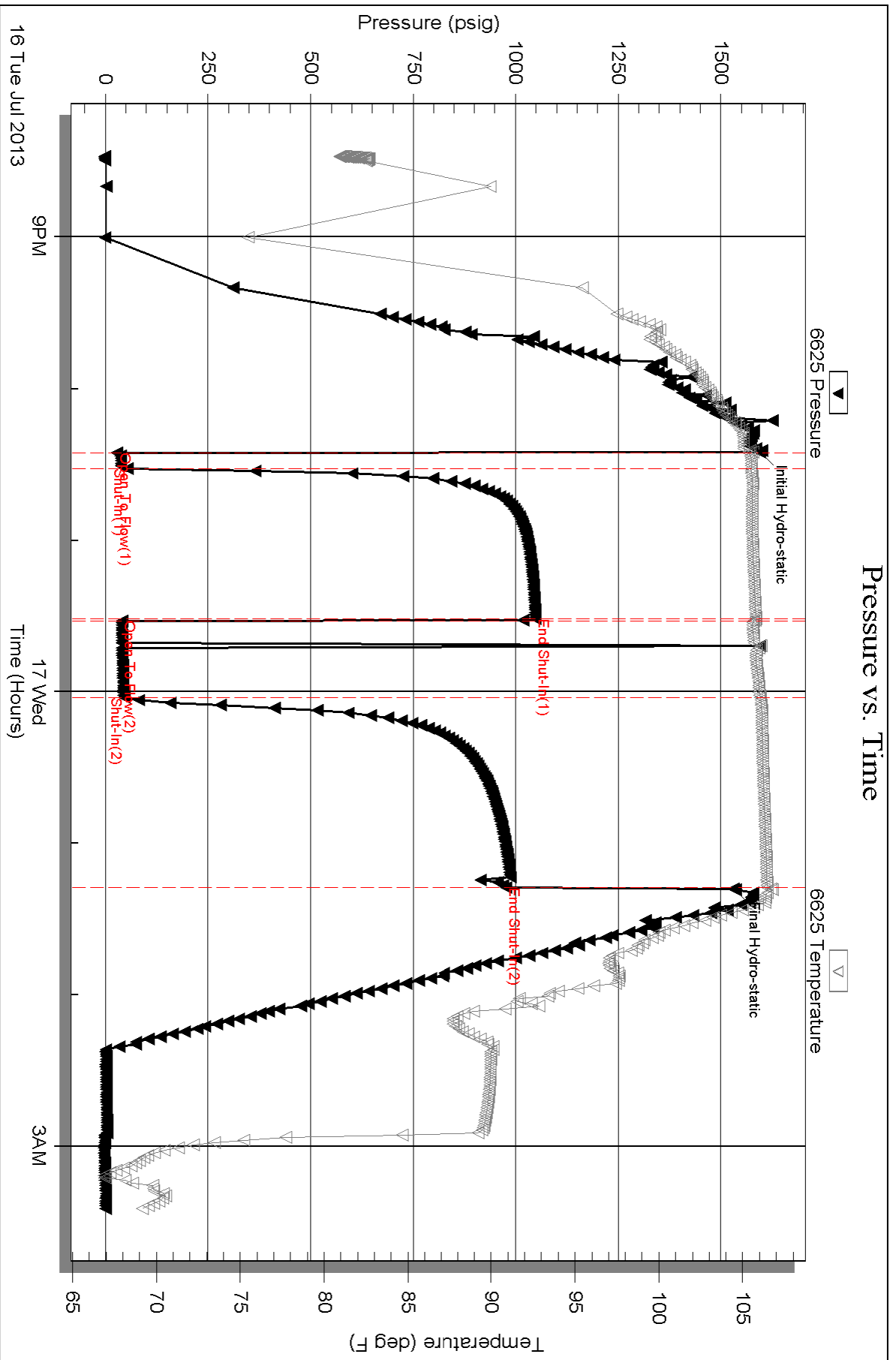
Serial #:

Laboratory Name:

Laboratory Location:

Recovery Comments: 2000 ML of total fluid
2000 ML Mud w ith oil spots
220 Psi

Pressure vs. Time



Serial #: 8167

Fluid

Samuel Gary Jr & Associates

Lawrence 1-25

DST Test Number: 1

