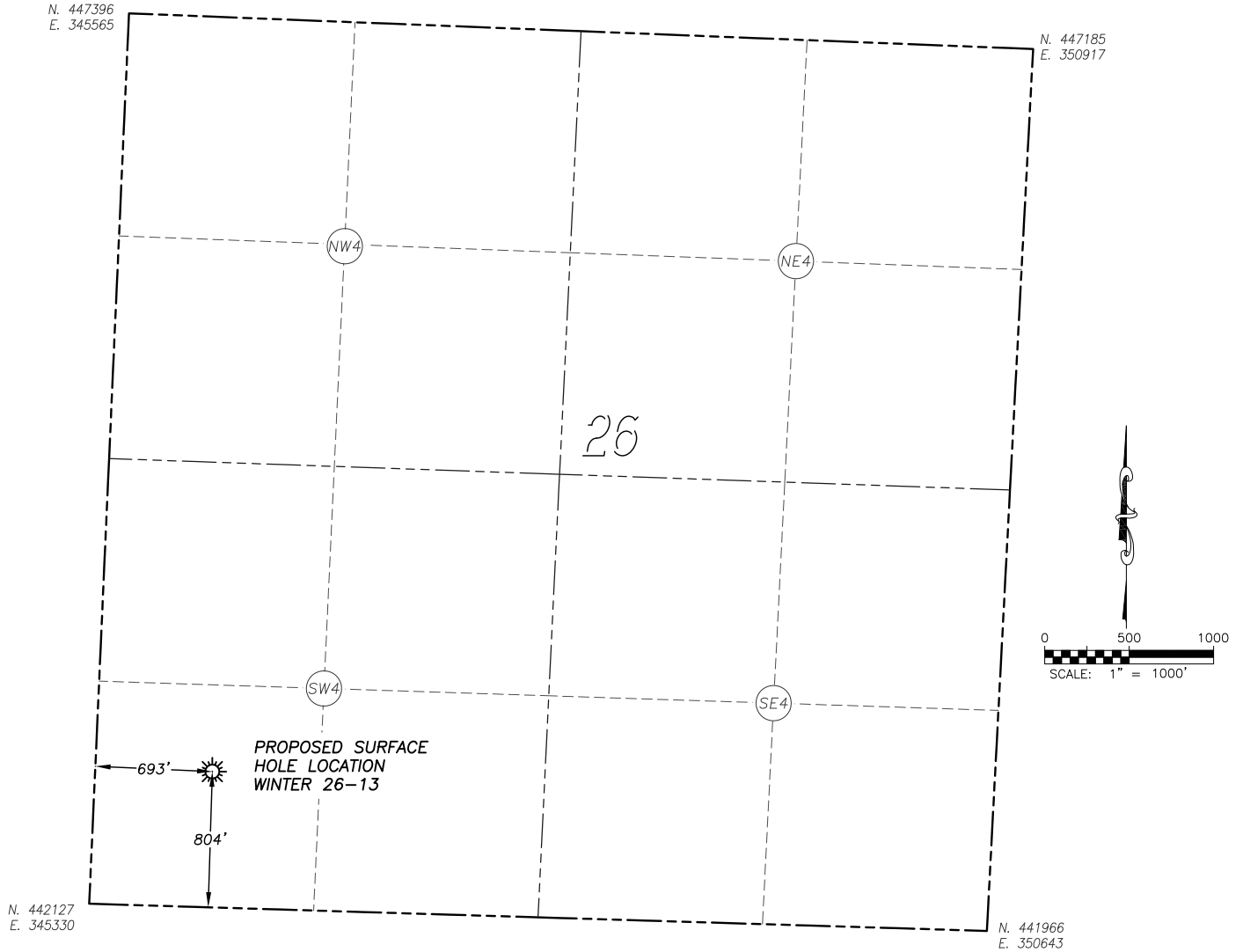


WELL LOCATION MAP WINTER 26-13

SECTION 26, TOWNSHIP 6 SOUTH, RANGE 37 WEST OF THE 6TH PRINCIPAL MERIDIAN



NAD 83 LATITUDE AND LONGITUDE

WINTER 26-13 SURFACE HOLE:

LATITUDE: N39.49922°
 LONGITUDE: W101.42502°
 ELEVATION: 3419'
 FOOTAGE: 804' FSL, 693' FWL
 QTR/QTR: SW4/SW4
 DATE: 10/25/2013

KANSAS STATE PLANE
 NORTH ZONE COORDINATES:
 NORTH: 442909
 EAST: 346059

NAD 27 LATITUDE AND LONGITUDE

LATITUDE: N39.49922°
 LONGITUDE: W101.42458°

IN ACCORDANCE WITH A REQUEST FROM McELVAIN ENERGY INC., DALEY LAND SURVEYING, INC. HAS DETERMINED THE SURFACE LOCATION OF THE WINTER 26-13 WELL TO BE 804' FSL, 693' FWL, AS MEASURED AT NINETY (90) DEGREES FROM THE SECTION LINES OF SECTION 26, TOWNSHIP 6 SOUTH, RANGE 37 WEST OF THE 6TH PRINCIPAL MERIDIAN, SHERMAN COUNTY, KANSAS.

NOTES:

- 1) HORIZONTAL DATUM IS NAD83.
- 2) VERTICAL DATUM IS NAVD88 AND ORIGINATES THE LOCAL C.O.R.S. NETWORK, UTILIZING THE GEOID09 MODEL.
- 3) COORDINATES SHOWN ARE KANSAS NORTH ZONE, STATE PLANE.
- 4) SURFACE USE: AGRICULTURAL.
- 5) EXISTING OVERHEAD POWER RUNS N/S ALONG ROAD 35 ON WEST SIDE OF SECTION 26.
- 6) NO ALTERNATE LOCATION STAKE SET.
- 7) THIS MAP DOES NOT REPRESENT A BOUNDARY SURVEY, IT IS NOT A LAND SURVEY PLAT OR AN IMPROVEMENT SURVEY PLAT AND IT IS NOT TO BE RELIED UPON FOR THE ESTABLISHMENT OF FENCE, BUILDING OR OTHER FUTURE IMPROVEMENT LINES.

ACCESS ROAD MAP WINTER 26-13

SECTION 26, TOWNSHIP 6 SOUTH, RANGE 37 WEST OF THE 6TH PRINCIPAL MERIDIAN

