



**TRILOBITE TESTING, INC.**

# DRILL STEM TEST REPORT

Samuel Gary Jr. & Associates, Inc.

22-12-17 Ellis, KS

1515 Wynkoop, Ste 700  
Denver, CO 80202

**Bosch 1-22**

Job Ticket: 50813

**DST#: 3**

ATTN: Cayton Camozzi

Test Start: 2013.07.22 @ 23:23:00

## GENERAL INFORMATION:

Formation: **LKC I-J**

Deviated: No Whipstock: ft (KB)

Time Tool Opened: 01:22:30

Time Test Ended: 07:05:15

Test Type: Conventional Straddle (Reset)

Tester: Brannan L

Unit No: 54

**Interval: 3508.00 ft (KB) To 3555.00 ft (KB) (TVD)**

Reference Elevations: 2119.00 ft (KB)

Total Depth: 3828.00 ft (KB) (TVD)

2111.00 ft (CF)

Hole Diameter: 7.88 inches Hole Condition: Fair

KB to GR/CF: 8.00 ft

**Serial #: 8789**

**Inside**

Press @ Run Depth: 34.74 psig @ 3513.00 ft (KB)

Capacity: 8000.00 psig

Start Date: 2013.07.22

End Date:

2013.07.23

Last Calib.: 2013.07.23

Start Time: 23:23:02

End Time:

07:05:15

Time On Btm: 2013.07.23 @ 01:21:45

Time Off Btm: 2013.07.23 @ 04:46:15

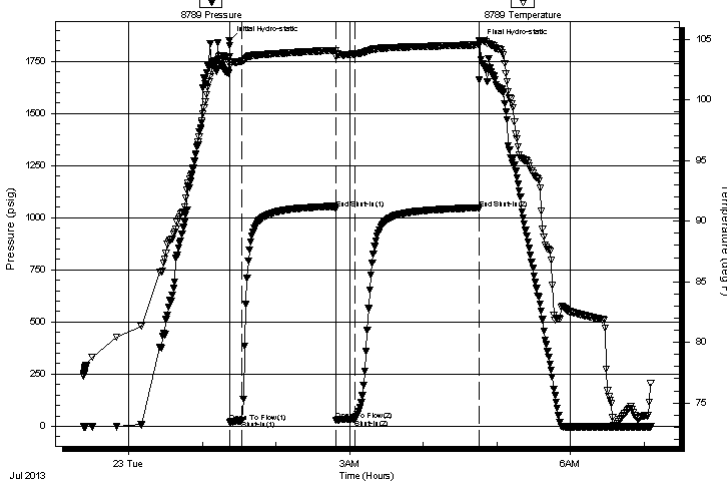
**TEST COMMENT:** 10- IF- 1"

75- IS- No blow

15- FF- .5"

100- FS- No blow

Pressure vs. Time



## PRESSURE SUMMARY

Time (Min.)	Pressure (psig)	Temp (deg F)	Annotation
0	1850.54	103.57	Initial Hydro-static
1	20.52	102.86	Open To Flow (1)
11	27.55	103.19	Shut-In(1)
87	1043.65	104.08	End Shut-In(1)
88	30.41	103.57	Open To Flow (2)
103	34.74	103.76	Shut-In(2)
204	1042.81	104.53	End Shut-In(2)
205	1836.37	104.86	Final Hydro-static

## Recovery

Length (ft)	Description	Volume (bbl)
35.00	OCM 20%O 80%M	0.21

\* Recovery from multiple tests

## Gas Rates

	Choke (inches)	Pressure (psig)	Gas Rate (Mcf/d)







**TRILOBITE  
TESTING, INC.**

# DRILL STEM TEST REPORT

**FLUID SUMMARY**

Samuel Gary Jr. & Associates, Inc.

**22-12-17 Ellis, KS**

1515 Wynkoop, Ste 700  
Denver, CO 80202

**Bosch 1-22**

Job Ticket: 50813

**DST#: 3**

ATTN: Cayton Camozzi

Test Start: 2013.07.22 @ 23:23:00

## Mud and Cushion Information

Mud Type: Gel Chem

Cushion Type:

Oil API:

deg API

Mud Weight: 9.00 lb/gal

Cushion Length:

ft

Water Salinity:

ppm

Viscosity: 60.00 sec/qt

Cushion Volume:

bbbl

Water Loss: 9.19 in<sup>3</sup>

Gas Cushion Type:

Resistivity: ohm.m

Gas Cushion Pressure:

psig

Salinity: 5000.00 ppm

Filter Cake: inches

## Recovery Information

Recovery Table

Length ft	Description	Volume bbl
35.00	OCM 20%O 80%M	0.209

Total Length: 35.00 ft      Total Volume: 0.209 bbl

Num Fluid Samples: 0

Num Gas Bombs: 0

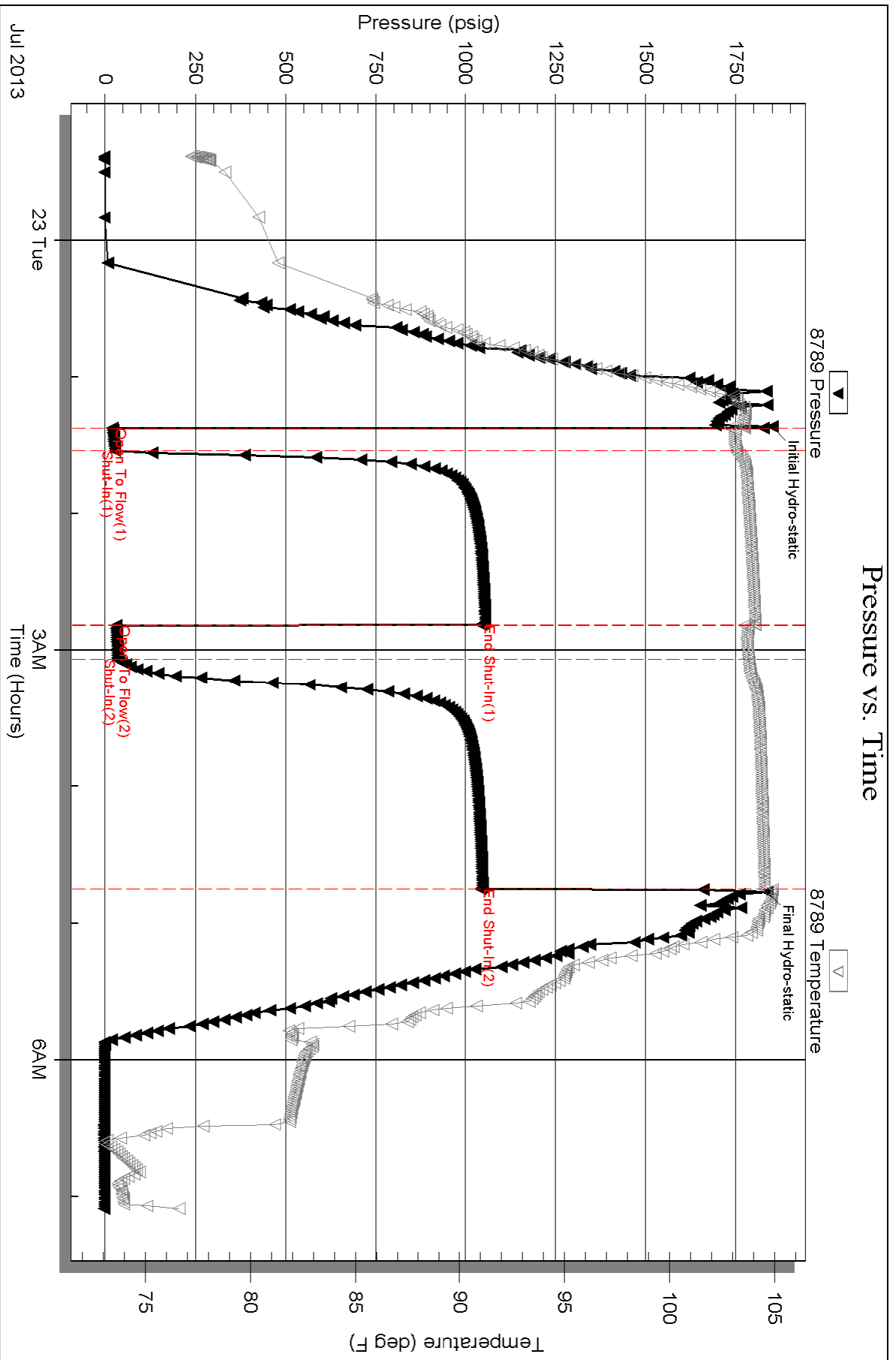
Serial #:

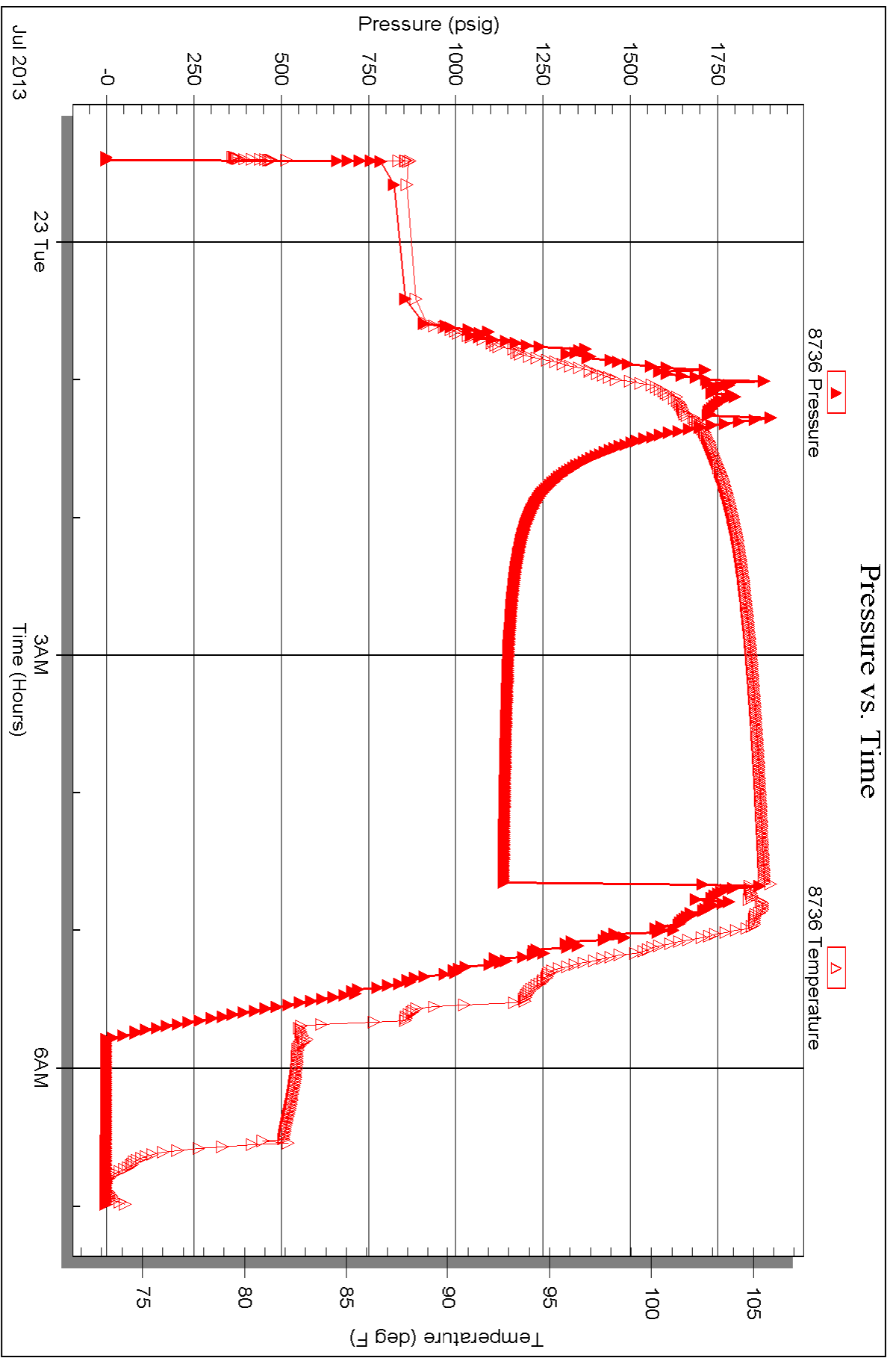
Laboratory Name:

Laboratory Location:

Recovery Comments: Sampler: 1900mLM 100mLO 160psi

# Pressure vs. Time





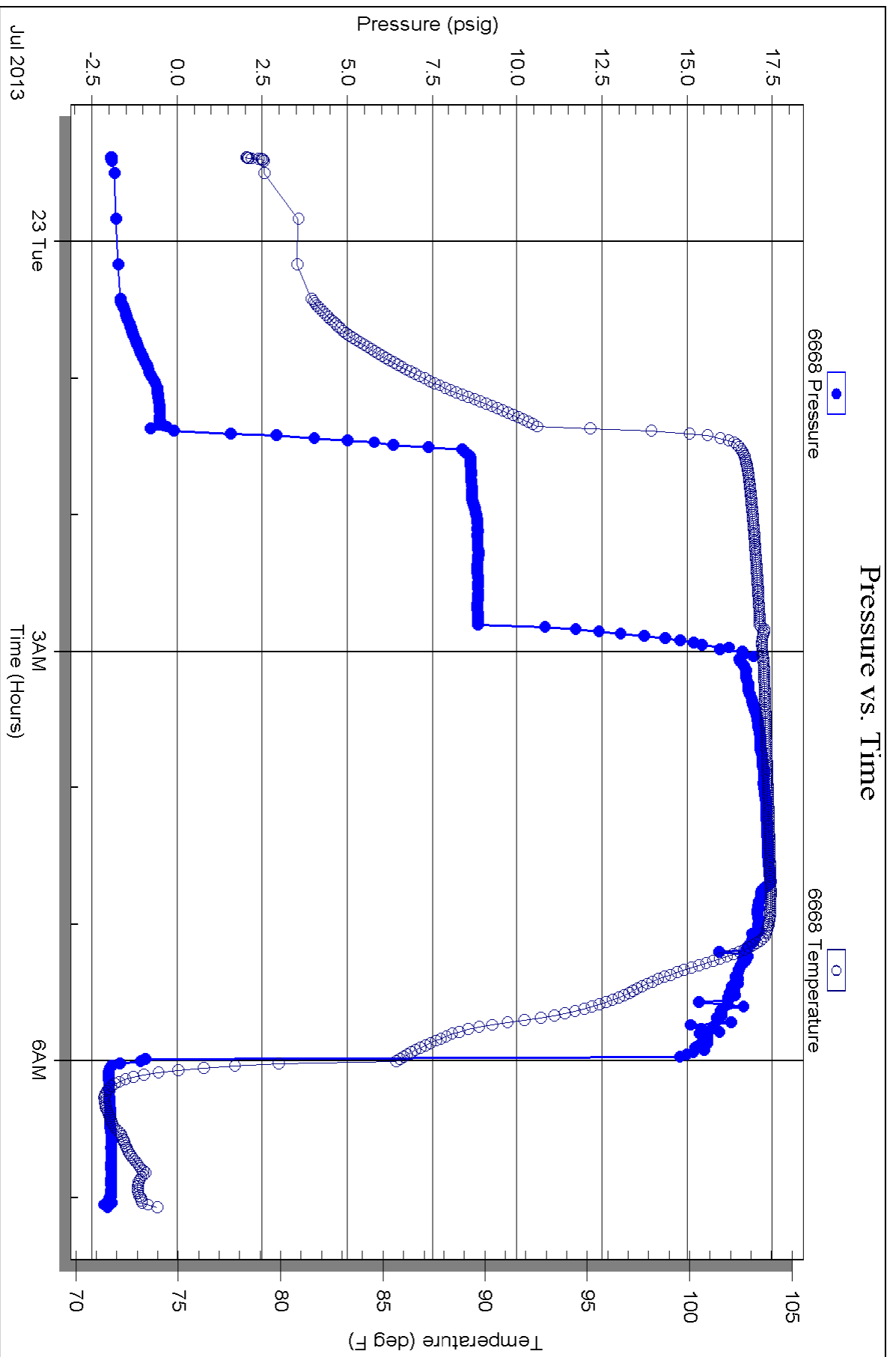
Serial #: 6668

Fluid

Samuel Gary Jr. & Associates, Inc.

Bosch 1-22

DST Test Number: 3



Triobite Testing, Inc

Ref. No: 50813

Printed: 2013.07.23 @ 09:13:19