

L.D. DRILLING, INC.  
NICKELSON LEASE  
SE. 1/4, SECTION 23, T11S, R33W  
LOGAN COUNTY, KANSAS

Directions:

From the intersection of Highway 40 and Highway 83 (south) at the south edge of Oakley, Kansas go 6.0 miles West on Highway 40, then go 1.5 miles South, then go 1.0 miles East to the NE. corner of Section 23, then go 0.66 miles South, then go 0.43 miles West to location.

DIRT (CEDAR CREST RD.) ROAD

Notes:

1. Set (2) wood stakes at location site.
2. All flagging Red & Yellow.
3. Overhead power available at S. 1/4 of W. line, Sec. 23.
4. Kansas One Call System Inc. should be notified before excavation (1-800-344-7233).
5. CAUTION: Various pipelines in Sec. 23.
6. Contact landowner for best access.

Drillsite Location  
Nickelson #2-23  
1774' FSL 2310' FEL  
Ground Elevation = 3127  
Y = 285740 X = 1162648

State Plane-NAD 27-Kansas North  
(Mapping Grade GPS Used)

HOLM 1-83

TANK BATTERY

STUBBLE

DIRT (BROKEN BOW RD.) ROAD

ROAD

(360 ROAD)

DIRT

ROAD

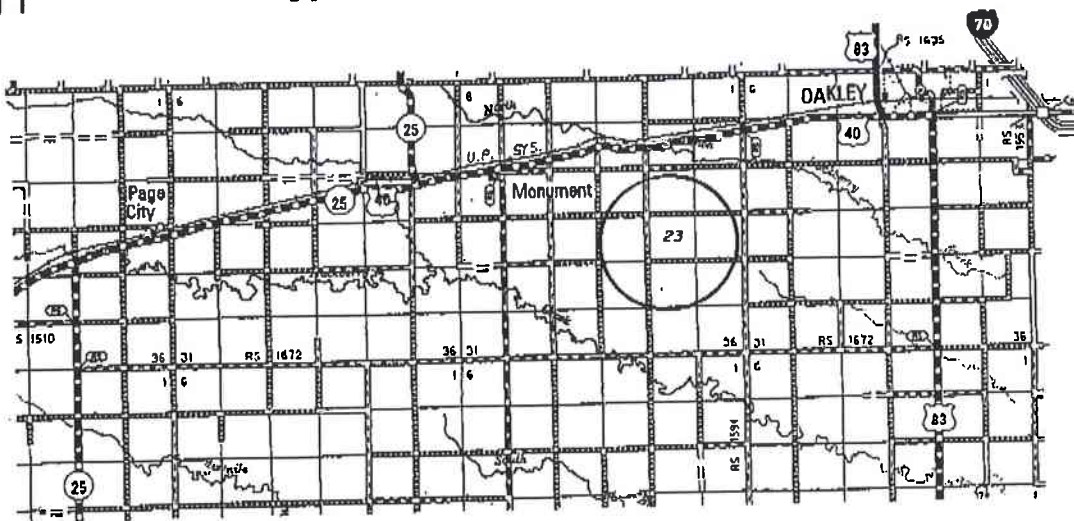
(390 ROAD)

DIRT

SCALE 1" = 1000'



\*Ingress and egress to location as shown on this plat is per usage only and may not be legally opened for public use. Contact landowner, tenant and county road department for access.



• Contouring data is based upon the best maps and photographs available to us and upon a regular section of land containing 640 acres.

• Approximate section lines were determined using the normal standard of care of all field surveyors practicing in the state of Kansas. The section corners, which establish the precise section lines, were not necessarily located, and the exact location of the drillsite location in the section is not guaranteed. Therefore, the operator, securing this service and accepting this plat and all other parties relying thereon agree to hold Central Kansas Oilfield Services, Inc., its officers and employees harmless from all losses, costs and expenses and said entities released from any liability from incidental or consequential damages.

• Elevations derived from National Geodetic Vertical Datum.

Date October 31, 2013