

# ADVANTAGE ELEVATIONS

OIL FIELD SURVEYORS

BOX 8604 - PRATT, KS 67124  
(620) 672-6491

1023131

INVOICE NO.

LOTUS OPERATING CO LLC OPERATOR NO. 1 FADS A FARM  
Pratt COUNTY 26 29s 15w 340' FNL & 2080' FEL of Sec. LOCATION  
ELEVATION: 1976' GR

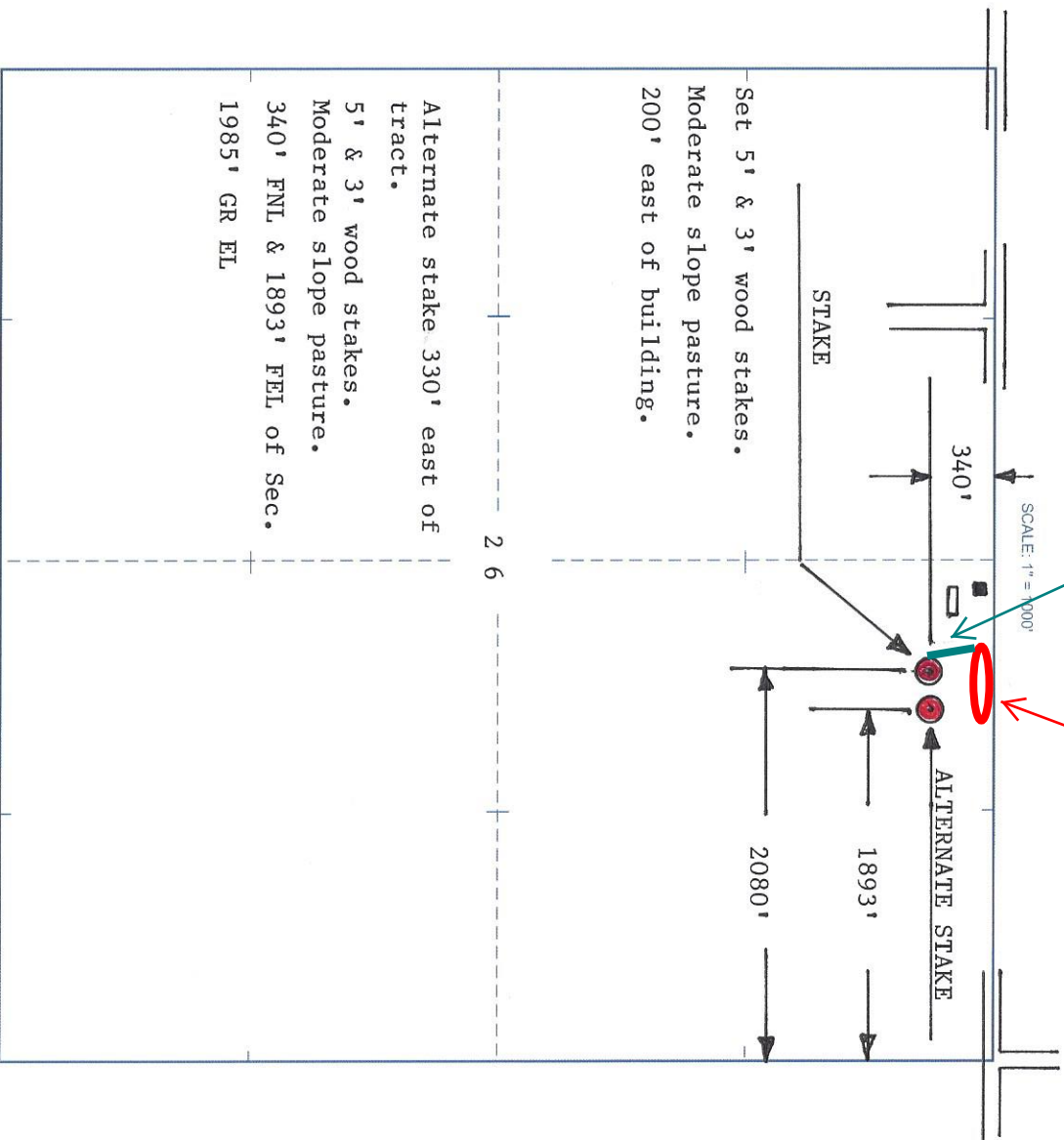
LOTUS OPERATING CO LLC  
100 S Main, Ste 420  
Wichita, KS 67202



AUTHORIZED BY: Tim Hellman

Lease line and lease road

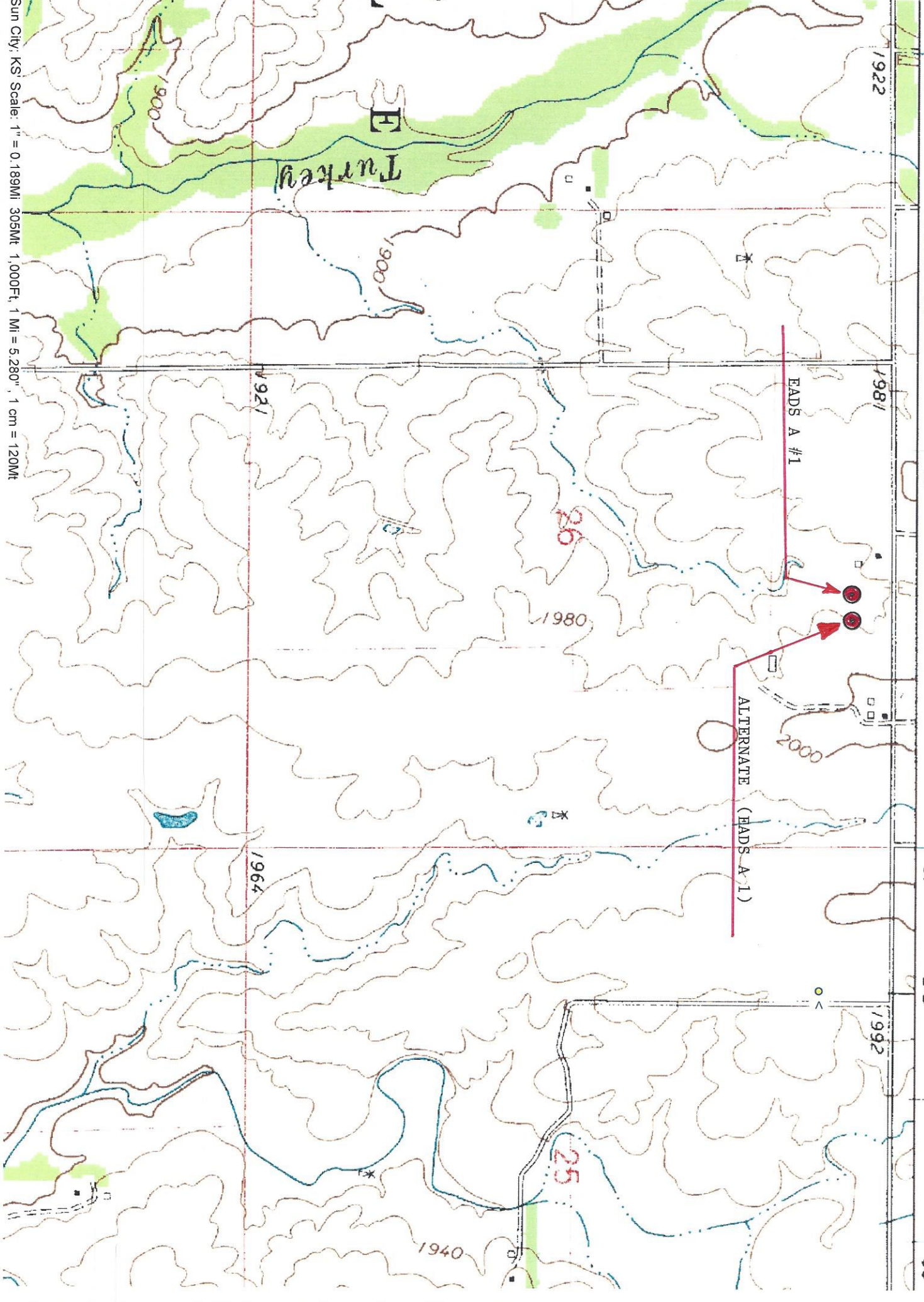
Tank Battery



DATE STAKED: 10/23/13

6259 III SW  
(CROFT)

505 506 507 508



Sun City, KS Scale: 1" = 0.189MI 305Mt 1,000Ft, 1 Mi = 5,280', 1 cm = 120Mt