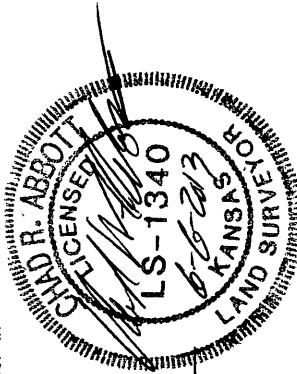


Staking For: VAL Energy Inc.  
Brooks 1-13  
SE 1/4 Sec. 13, T31S, R6E

State of Kansas )  
County of Cowley ) SS

I, Chad R. Abbott, L.S. #1340 do hereby certify that this is a true representation of an Oil Well Location Survey performed by me or under my direct supervision and that I am a duly licensed Land Surveyor in the State of Kansas.

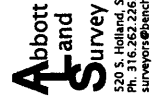
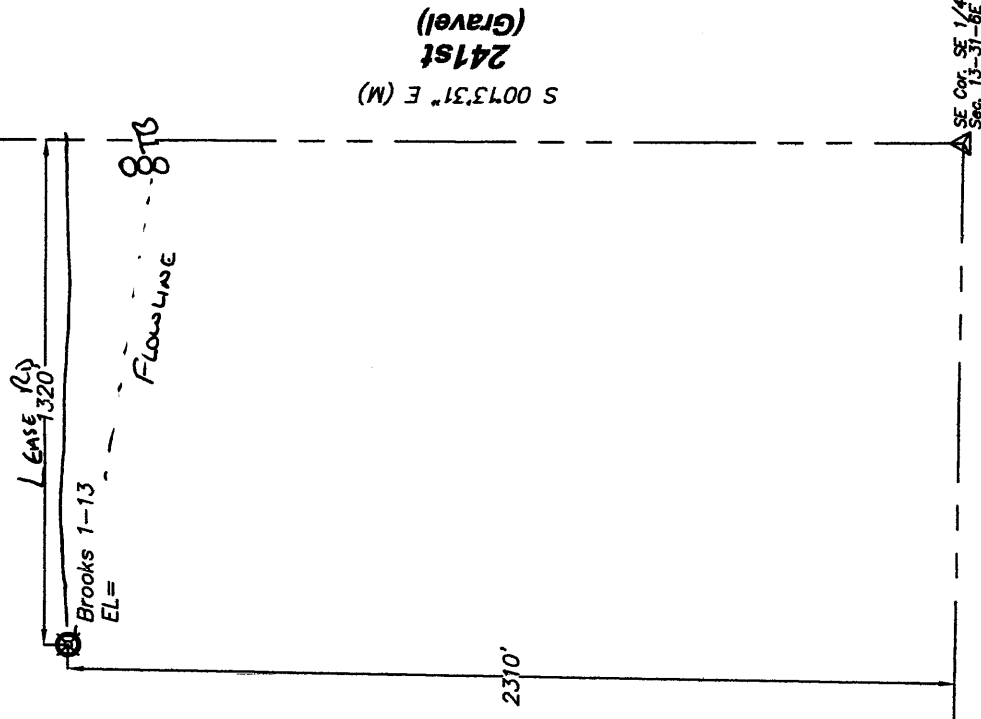
Date of Survey: June 4, 2013  
Date of Preparation: June 5, 2013



Chad R. Abbott L.S. #1340

N 1/2, N 1/2, SE 1/4 Sec. 13, T31S, R6E  
Well Name: Brooks 1-13  
Operator: VAL Energy Inc.  
Topography & Vegetation: Pasture (grass).  
Elevation of Ground at Stake: 1436.25' (NAVD88)  
Coordinates of staked well  
Datum: NAD 83  
2310' FSL and 1320' FEL  
Latitude: 37°21'05.022348"  
Longitude: 96°43'13.528159"

NE Cor. SE 1/4  
Sec. 13-31-6E



520 S. Holland, Ste. 103, Wichita, KS 67209  
Ph. 316.262.2262 Fax 316.262.2268  
surveyors@benchmark.net

- LEGEND:**
- (M) = MEASURED OR CALCULATED FROM MEASUREMENT
  - △ = FOUND 1/2" REBAR (ORIGIN UNKNOWN)
  - ⊙ = CALCULATED POINT
  - ⊗ = STAKED OIL WELL