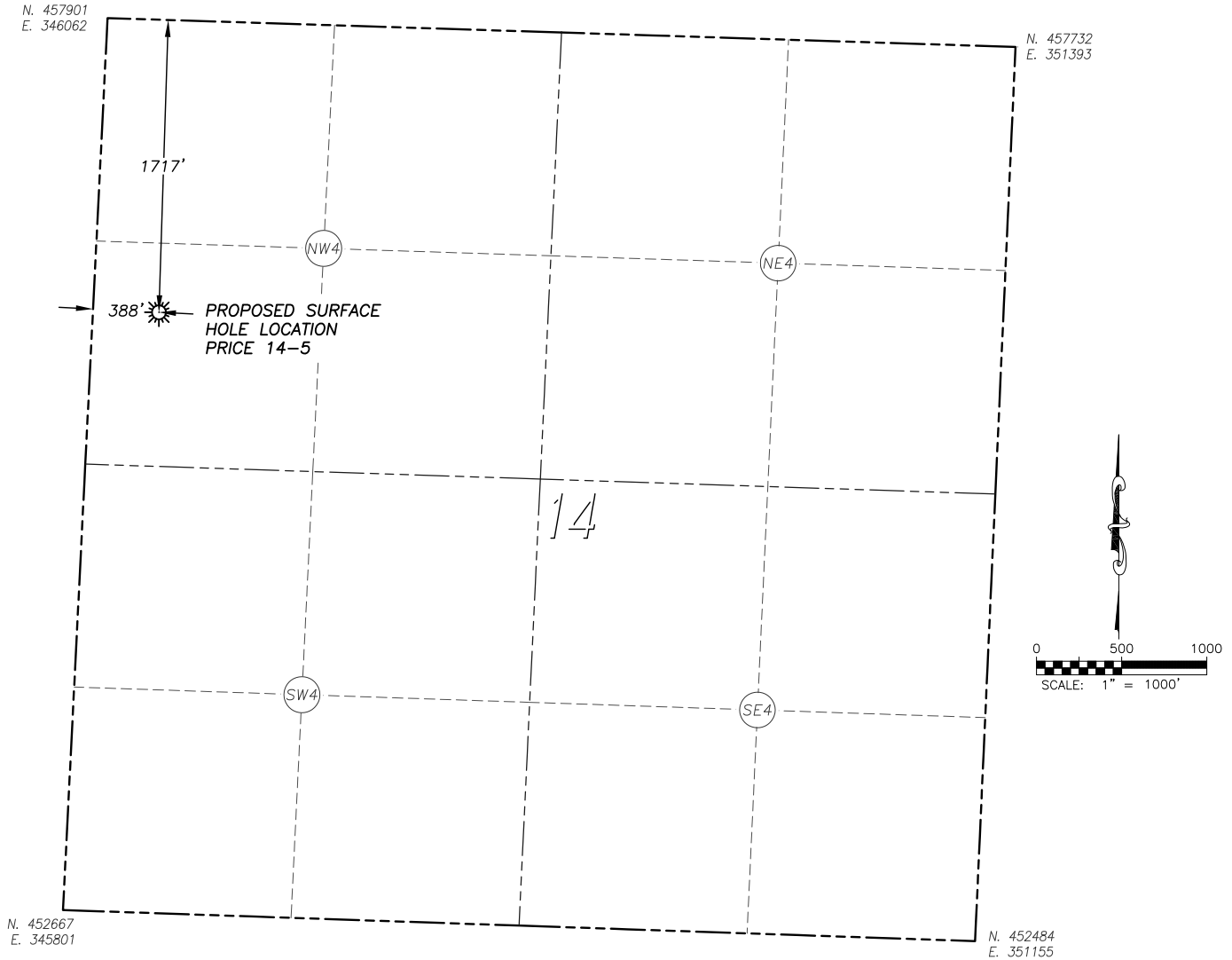


WELL LOCATION MAP PRICE 14-5

SECTION 14, TOWNSHIP 6 SOUTH, RANGE 37 WEST OF THE 6TH PRINCIPAL MERIDIAN



NAD 83 LATITUDE AND LONGITUDE

PRICE 14-5 SURFACE HOLE:
 LATITUDE: N39.53565°
 LONGITUDE: W101.42572°
 ELEVATION: 3441'
 FOOTAGE: 1717' FNL, 388' FWL
 QTR/QTR: SW4/NW4
 DATE: 10/25/2013

KANSAS STATE PLANE
 NORTH ZONE COORDINATES:
 NORTH: 456175
 EAST: 346364

NAD 27 LATITUDE AND LONGITUDE

LATITUDE: N39.53565°
 LONGITUDE: W101.42528°

IN ACCORDANCE WITH A REQUEST FROM McELVAIN ENERGY INC., DALEY LAND SURVEYING, INC. HAS DETERMINED THE SURFACE LOCATION OF THE PRICE 14-5 WELL TO BE 1717' FNL, 388' FWL, AS MEASURED AT NINETY (90) DEGREES FROM THE SECTION LINES OF SECTION 14, TOWNSHIP 6 SOUTH, RANGE 37 WEST OF THE 6TH PRINCIPAL MERIDIAN, SHERMAN COUNTY, KANSAS.

NOTES:

- 1) HORIZONTAL DATUM IS NAD83.
- 2) VERTICAL DATUM IS NAVD88 AND ORIGINATES FROM THE LOCAL C.O.R.S. NETWORK, UTILIZING THE GEOID09 MODEL.
- 3) COORDINATES SHOWN ARE KANSAS NORTH ZONE, STATE PLANE.
- 4) SURFACE USE: AGRICULTURAL.
- 5) EXISTING OVERHEAD POWER RUNS N/S ALONG ROAD 35 ON WEST SIDE OF SECTION 14 AND E/W ALONG ROAD 77 ON THE SOUTH SIDE OF SECTION 14.
- 6) AN ALTERNATE LOCATION STAKE WAS SET AT 1685' FNL, 330' FWL, NAD83 LATITUDE: N39.53573°, LONGITUDE: W101.42592°.
- 7) THIS MAP DOES NOT REPRESENT A BOUNDARY SURVEY, IT IS NOT A LAND SURVEY PLAT OR AN IMPROVEMENT SURVEY PLAT AND IT IS NOT TO BE RELIED UPON FOR THE ESTABLISHMENT OF FENCE, BUILDING OR OTHER FUTURE IMPROVEMENT LINES.

ACCESS ROAD MAP PRICE 14-5

SECTION 14, TOWNSHIP 6 SOUTH, RANGE 37 WEST OF THE 6TH PRINCIPAL MERIDIAN

