

ADVANTAGE ELEVATIONS

OIL FIELD SURVEYORS

BOX 8604 - PRATT, KS 67124
(620) 672-6491

107132

INVOICE NO.

MURFIN DRILLING CO INC
OPERATOR

1-27
NO.

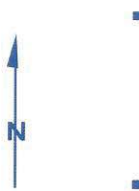
McMillen Trust OWWO
FARM

Stafford
COUNTY

27 22s 13w
S T R

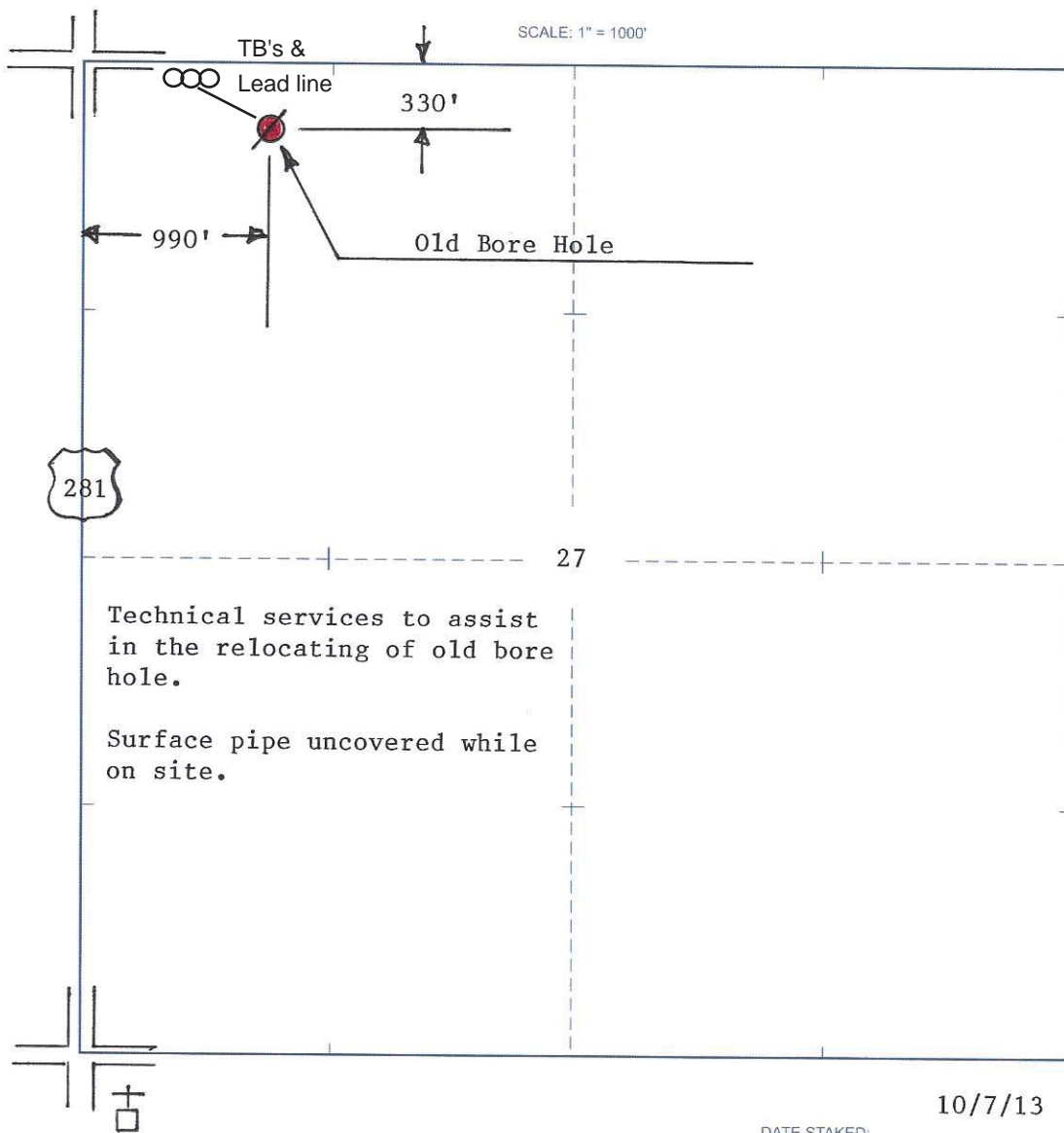
NE NW NW
LOCATION

ELEVATION: 1891' GR



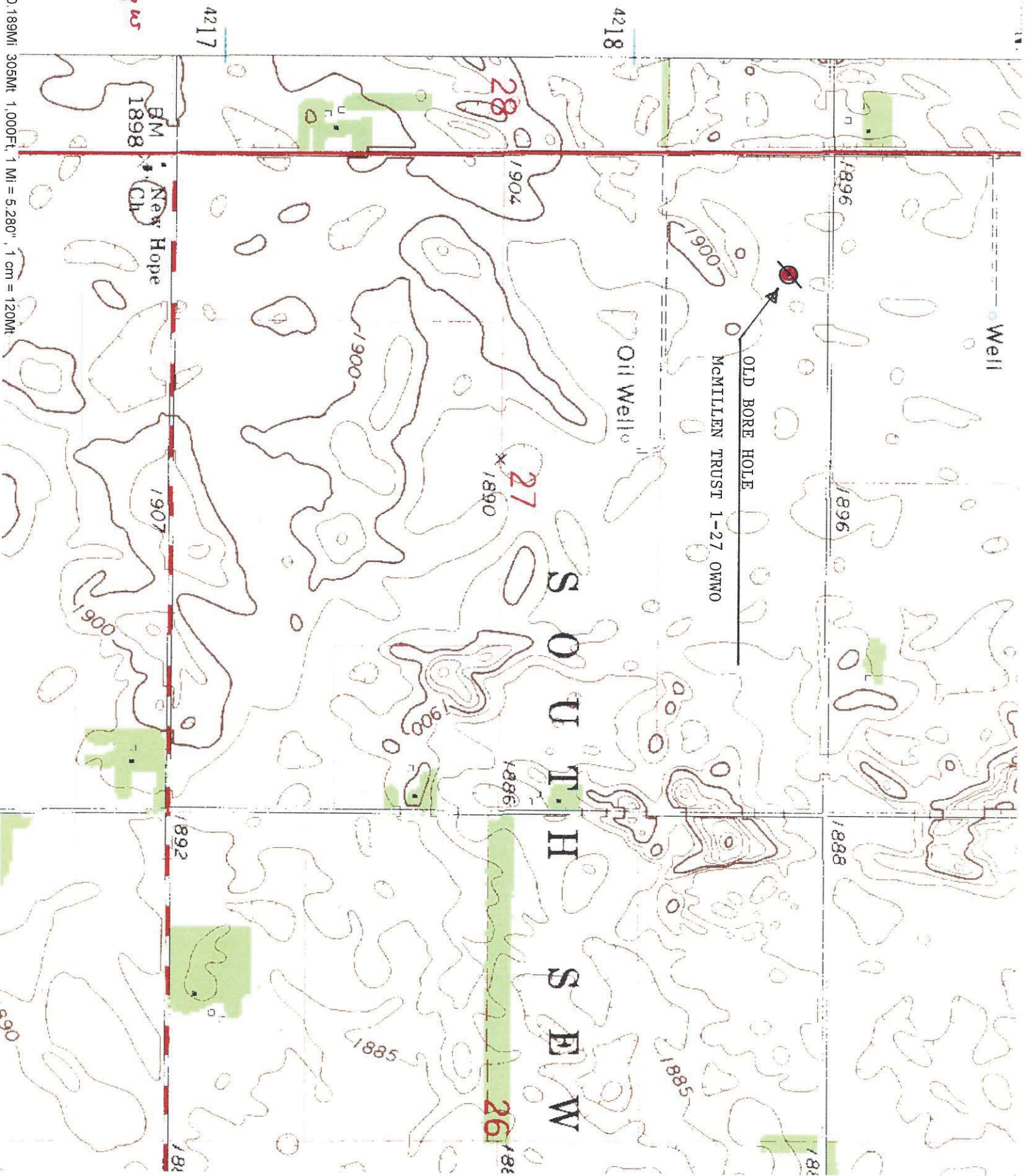
MURFIN DRILLING CO INC
250 N Water, Ste 300
Wichita, KS 67202

AUTHORIZED BY: Shauna



Hudson, KS Scale: 1" = 0.189MI 305Mt 1,000Ft. 1 MI = 5,280' 1 cm = 120Mt

27-225-13w



BM 1898

New Hope Ch

1907

1892

1891

28

1904

27

1890

1886

26

1884

SOUTH SEW

Oil Wells

OLD BORE HOLE
McMILLEN TRUST 1-27 OWMO

Well

1896

1896

1888

1884

1885

1885

1890

4217

4218