

MUD LOG

WellSight Systems

Scale 1:240 (5"=100') Imperial
Measured Depth Log

Well Name: Raymond Oil Co., Inc. Burker Trust #1 Rooks Co., Kansas
Location: SE/4 Sec. 5-6s-20w
License Number: _____ Region: Wildcat
Spud Date: October 16, 2013 Drilling Completed: October 23, 2013
Surface Coordinates: 40'w of N/2 - SW - SE/4 Sec.5-6s-20w
25's of N/2 - SW - SE/4 Sec.5-6s-20w
Bottom Hole Coordinates: 40'w of N/2 - SW - SE/4 Sec.5-6s-20w
25's of N/2 - SW - SE/4 Sec.5-6s-20w
Ground Elevation (ft): 2148' K.B. Elevation (ft): 2160'
Logged Interval (ft): 2900' To: 3680' Total Depth (ft): 3680'
Formation: Topeka, LKC, Reagan Sand, Granite Wash, Granite
Type of Drilling Fluid: Mud-Co/Service Mud: Chemical
Printed by WellSight Log Viewer from WellSight Systems 1-800-447-1534 www.WellSight.com

OPERATOR

Company: Raymond Oil Company, Inc.
Address: PO BOX 48788
Wichita, Kansas
67201+8788

GEOLOGIST

Name: Pat Balthazor assisted by Robert Turner
Company: Geo-Logic
Address: 207 N. Cooper 785-216-0694
Plainville, Kansas
67663

Comments

5/8" surface casing set at 263'.
Pipe Strap was 00.43 short to board at 3552'
Contractor: H-2 Rig #2
Due to lack of porosity it was decided by all parties to abandon the well.

DSTs

DST #1 3417'-3484' LKC: "b-c-d-f" zones. 30-60-45-90
Recovered: 190' mdy. wtr. 95% water, 5% mud.
IFP: 10-80, FFP: 71-125, BHP: 1019-1011, BHT: 106 deg

DST #2 3520'-3552', LKC: "h & i" zones. 30-60-45-90
Recovered: 30' oil spked mud. 99% mud, 1% oil.
IFP: 32-34, FFP: 35-35, BHP: 1058-1033, BHT: 104 deg.

DST #3 3593'-3643', Regan Sand 30-60-45-90
Recovered: 10' oil specked mud.
IFP: 9-12, FFP: 17-20, BHP: 873-857, BHT: 105 deg.

Formations

Structural Comparison
Raymond Oil **Vincent Oil**
665' FSL & 2020' FEL **SW-NW-SE/4**
SE/4 Sec. 5-6s-20w **Sec. 5-6s-20w**
Sample Tops **Log Tops** **Log Tops**

Anhy.	1763 (+397)	1762 (+398)	1724 (+397)
Topeka	3151 (-991)	3148 (-998)	3112 (-991)
Heebner	3361 (-1201)	3358 (-1198)	3319 (-1198)
Toronto	3379 (-1218)	3380 (-1220)	3344 (-1223)
LKC	3400 (-1240)	3397 (-1237)	3360 (-1239)
Muncie	3505 (-1345)	3503 (-1443)	3468 (-1347)
BKC	3593 (-1433)	3588 (-1428)	3554 (-1433)
Marmaton	3627 (-1467)	3625 (-1465)	3592 (-1471)
Reagan Sand	3636 (-1476)	3634 (-1474)	3599 (-1478)
Granite Wash	Trace in the base of the Regan		3607 (-1486)
Granite	3644 (-1484)	3641 (-1481)	3525 (-1504)
TD	3680 (-1520)	3676 (-1516)	3630 (-1509)

ROCK TYPES

Anhy	Clyst	Gyp	Mrst	Shgy
Bent	Coal	Igne	Salt	Sltst
Brec	Congl	Lmst	Shale	Ss
Cht	Dol	Meta	Shcol	Till

ACCESSORIES

MINERAL	Gyp	FOSSIL	Ostra	Sltstrg
Anhy	Hvymin	Algae	Pelec	Ssstrg
Arggrn	Kaol	Amph	Pellet	TEXTURE
Arg	Marl	Belm	Pisolite	Boundst
Bent	Minxl	Bioclst	Plant	Chalky
Bit	Nodule	Brach	Strom	Cryxln
Brecfrag	Phos	Bryozoa	STRINGER	Earthy
Calc	Pyr	Cephal	Anhy	Finexln
Carb	Salt	Coral	Arg	Grainst
Chtdk	Sandy	Crin	Bent	Lithogr
Chtlt	Silt	Echin	Coal	Microxln
Dol	Sil	Fish	Dol	Mudst
Feldspar	Sulphur	Foram	Gyp	Packst
Ferrpel	Tuff	Fossil	Ls	Wackest
Ferr		Gastro	Mrst	
Glau		Oolite		

OTHER SYMBOLS

POROSITY	Vuggy	ROUNDING	Spotted	EVENT
Earthy		Rounded	Ques	Rft
Fessst	SORTING	Subnd	Dead	Sidewall

- F
- X
- A
- O
- P

Finest
Fracture
Inter
Moldic
Organic
Pinpoint

- W
- M
- P

Well
Moderate
Poor

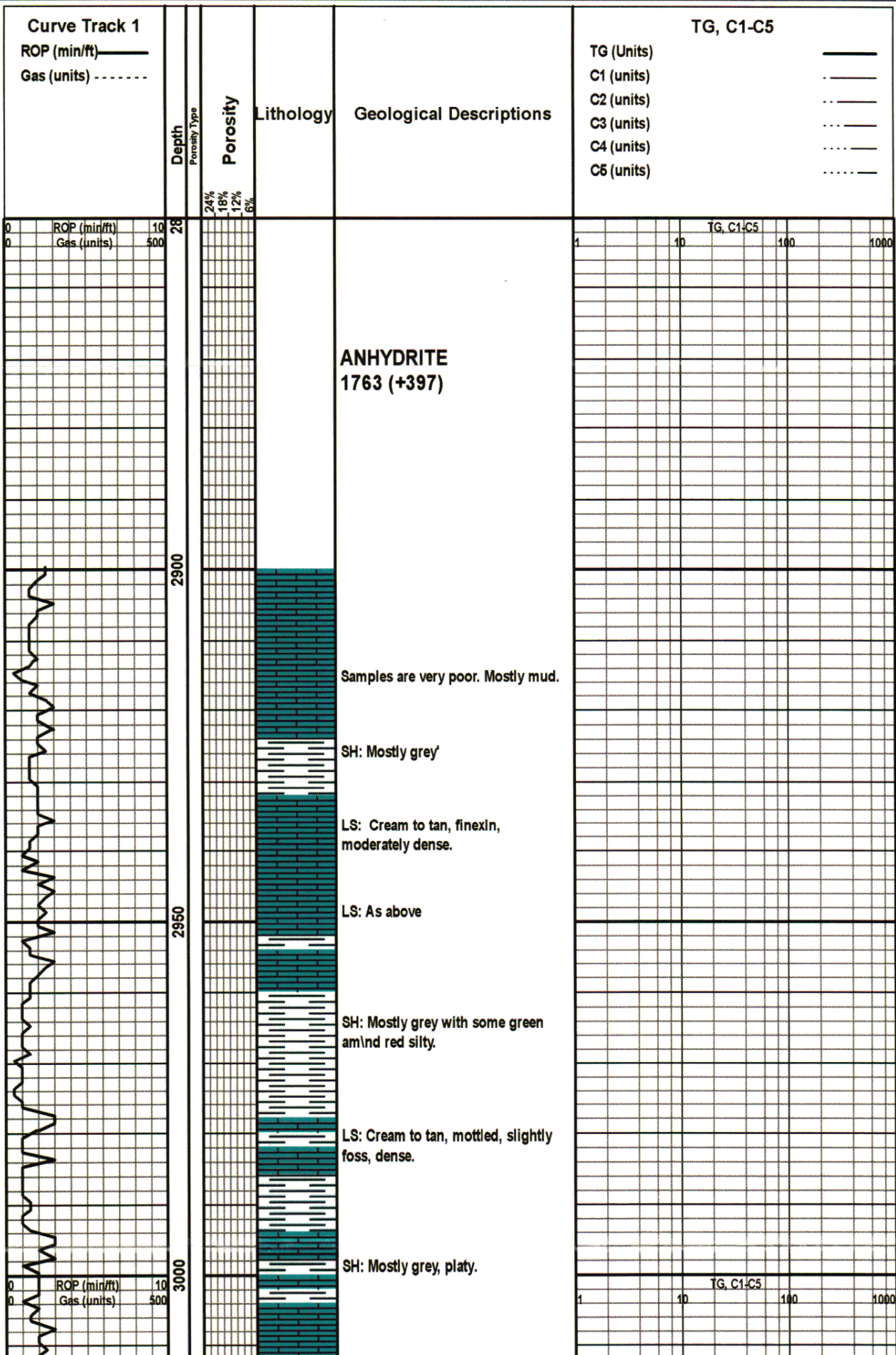
- a
- A

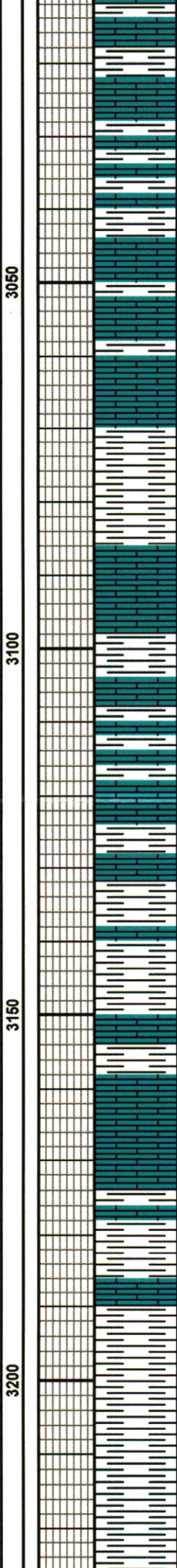
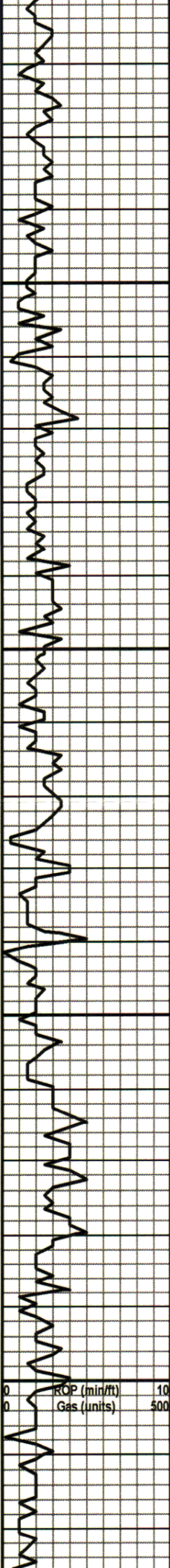
Subang
Angular

OIL SHOW
Even

INTERVAL
Core
Dst

Dead
Sidewall





Various interbedded limestones and shales.

LS: Cream to tan, finexln, dense.

SH: Mostly grey with some green and red.

LS: Various limes, Mostly crean, finexln, dense with some cream to grey, mottled, very foss, moderately dense.

Various interbedded limestones and shales.

SH: Grey, platy with sme very light, silty.

LS: Cream to tan, very finexln, foss, with some brown, finexln, very foss. moderately dense.

SH: Light grey with rare black, silty.

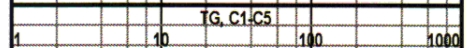
SH: Light grey, silty in part, to grey, platy.

SH: Black, carb

SILTSTONE: Very lighy grey with some rare red sandstone

TOPEKA 3151 (-991)

**VIS: 53
WT: 9.1
LCM: 2#**





3250

3300

3350

3400

LS: Mostly grey, finexln, some foss, with abundant tan to brown, mottled, finexln, very foss.

SH: Black, Carb.

SH: Mostly red and grey, with abundant very soft light grey clay.

LS: Mostly cream to light tan, finexln, dense, with some sandy, friable. Rare white, opaque fresh chert.

SH: Mostly grey.

LS: Cream to tan, very finexln, slightly dolomitic in part.

SH: Very dark grey to black, Carb.

LS: Cream, very finexln, friable with a very slight show of free oil in very poor interxln and vug. porosity. No cut or odor

SH: Mostly grey.

LS: Cream to tan, very finexln, slightly foss. very dense

SH: Grey, platy with black carb.

LS: Tan, microxln, Very dense.

SH: Mostly grey, platy, With some red, Silty.

LS: Cream to light tan, very finexln, dense with very rare, poor show of oil, no odor. Rare pyrite.

SH: Mostly grey, platy with some red, blockie rarely slightly silty.

LS: Cream to tan, finexln, very dense with some tan to brown, finexln, dense, very foss. (fusilinids)

SH: Grey, platy with some red.

LS: Cream to tan, finexln, With rare show of free oil, good ring cut, no odor.

VIS: 55
WT: 9.1
LCM: 2#

HEEBNER 3361 (-1201)

TORONTO 3379 (-1218)

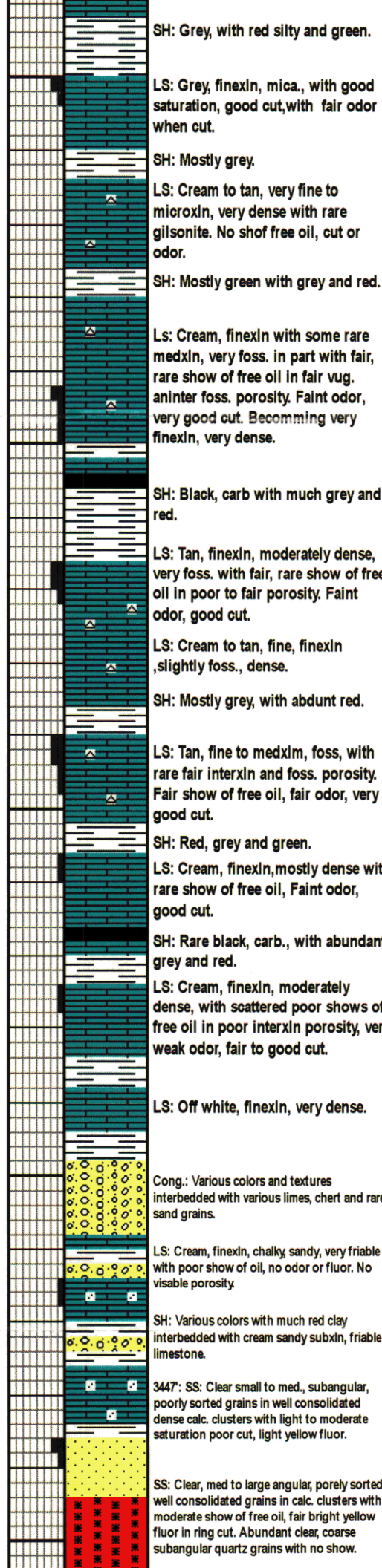
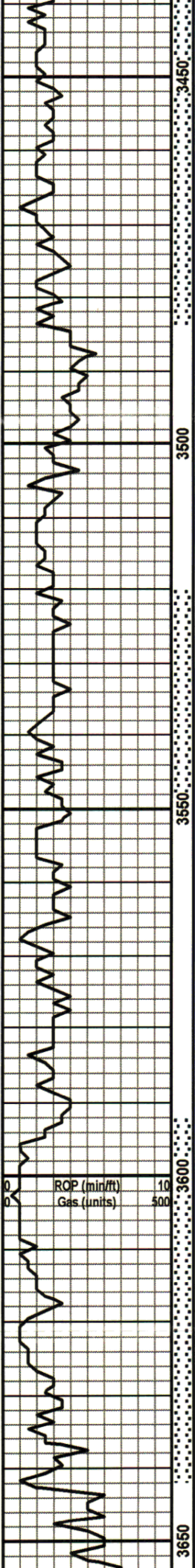
NOTE: There was a 4' long kelly at "kelly down" 3396' and the driller added 4 one min. feet. Top of LKC may be 4' higher than recorded here.

LKC 3400 (-1240)_{CS}

VIS: 55
WT: 9.1
LCM: 2#

ROP (min/ft) 10
Gas (units) 500

1 10 100 1000



SH: Grey, with red silty and green.

LS: Grey, finexln, mica., with good saturation, good cut, with fair odor when cut.

SH: Mostly grey.

LS: Cream to tan, very fine to microxln, very dense with rare gilsonite. No show free oil, cut or odor.

SH: Mostly green with grey and red.

LS: Cream, finexln with some rare medxln, very foss. in part with fair, rare show of free oil in fair vug. aninter foss. porosity. Faint odor, very good cut. Becoming very finexln, very dense.

SH: Black, carb with much grey and red.

LS: Tan, finexln, moderately dense, very foss. with fair, rare show of free oil in poor to fair porosity. Faint odor, good cut.

LS: Cream to tan, fine, finexln, slightly foss., dense.

SH: Mostly grey, with abundant red.

LS: Tan, fine to medxln, foss, with rare fair interxln and foss. porosity. Fair show of free oil, fair odor, very good cut.

SH: Red, grey and green.

LS: Cream, finexln, mostly dense with rare show of free oil, Faint odor, good cut.

SH: Rare black, carb., with abundant grey and red.

LS: Cream, finexln, moderately dense, with scattered poor shows of free oil in poor interxln porosity, very weak odor, fair to good cut.

LS: Off white, finexln, very dense.

Cong.: Various colors and textures interbedded with various limes, chert and rare sand grains.

LS: Cream, finexln, chalky, sandy, very friable with poor show of oil, no odor or fluor. No visible porosity.

SH: Various colors with much red clay interbedded with cream sandy subxln, friable limestone.

3447: SS: Clear small to med., subangular, poorly sorted grains in well consolidated dense calc. clusters with light to moderate saturation poor cut, light yellow fluor.

SS: Clear, med to large angular, poorly sorted, well consolidated grains in calc. clusters with moderate show of free oil, fair bright yellow fluor in ring cut. Abundant clear, coarse subangular quartz grains with no show.

DST #1 3417-3884 LKC: "b-o-d-e" zones.
30-60-45 90
Recovered: 190' Muddy Water.
IFP: 10-80
FFP: 71-125
BHP: 1019-1011
BHT: 106 deg.

NOTE: STRAP was 6.53' short to Board at 3484'.

CFS at 3484'

VIS: 54
WT: 8.9
LCM: 3#
YP: 25

MUNCIE CREEK
3505 (-1345)

DST #2 3520-3552 LKC: "H-I" zones.
30-60-45-90
Recovered: 30' oil specked mud. 1% oil
IFP: 32-34
FFP: 35-35 BHP: 1058-1033
BHT: 104 deg.

VIS: 52
WT: 9.0
LCM: 2#

CFS at 3552'

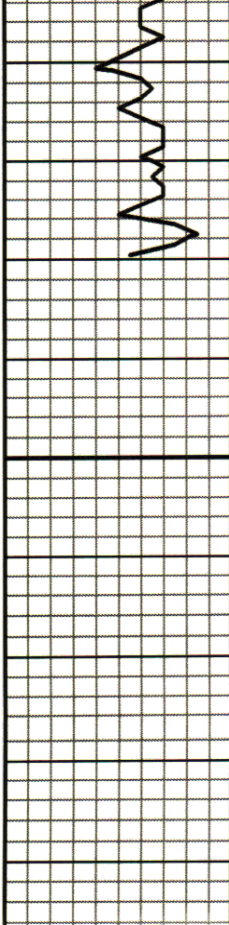
BASE KC: 3593' (-1433)

DST #3 3593-3643 REGAN SAND
30-60-45-90
Recovered: 10' oil specked mud.
IFP: 9-12
FFP: 17-20
BHP: 873-857
BHT: 105 deg.

Marmaton 3627 (- (-1467)

Reagan Sd: 3636 (-1476)

CFS at 3643' Granite
CFS at 3648' 3644 (-1884)



3700



3643': GRANITE: Coarse clear to pink angular quartz and rare red angular feldspar grains with abundant biotite inclusions.

Granite: Coarse clear to cream to pink angular quartz grains with occasional red angular feldspar grains both having abundant biotite inclusions.

NOTE: A Trace of Granite Wash was observed In the base of the Reagan Sand.

LTD: 3676 (-1516)
RTD: 3680 (-1520)

