

KEVIN L. KESSLER
CONSULTING PETROLEUM GEOLOGIST
(316) 522-7338

OPERATOR : MULL DRILLING COMPANY, INC.
LEASE : SOMY WELL # : 1 - 5
LOCATION : 600' FSL & 2310' FWL
SEC: 05 TWP : 17 S RGE : 24 W
COUNTY : NESS STATE : KANSAS

ELEVATION
KB : 2470'
GL : 2465'
MEASUREMENTS FROM
KB

CONTRACTOR : W W DRILLING RIG # 10
COMM : 08 / 23 / 2013 **COMP : 08 / 30 / 2013**
RTD : 4570 **LOG TD : 4569**
SAMPLES SAVED FROM : 3700 TO: RTD
GEOLOGICAL SUPERVISION FROM : 3700 TO: RTD
MUD UP : 3600 TYPE MUD : CHEMICAL

CASING RECORD
SURFACE :
8 5/8" @ 215'
PRODUCTION :

ELECTRICAL SURVEYS :

FORMATION	TOP	LOG	DATUM	TOP	SAMPLE	DATUM	STRUCT. COMP.
HEEBNER	3822		- 1352	3822		- 1352	+ 02
LANSING	3862		- 1392	3862		- 1392	+ 03
STARK	4098		- 1628	4100		- 1630	+ 02
BASE/ KC	4190		- 1720	4190		- 1720	+ 06
FORT SCOTT	4362		- 1892	4362		- 1892	- 04
CHEROKEE	4388		- 1918	4388		- 1918	- 04
MISSISSIPPI	4504		- 2034	4504		- 2034	?

REFERENCE WELL FOR STRUCTURAL COMPARISON :

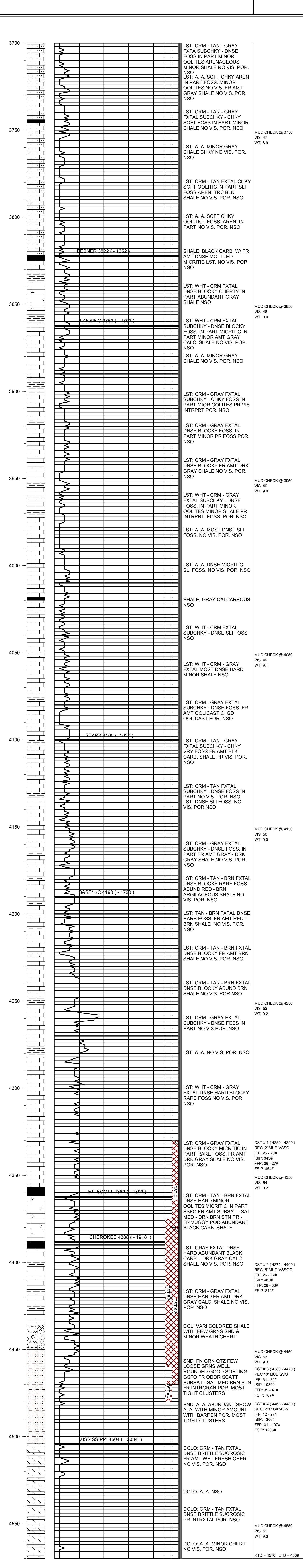
PALOMINO PETROLEUM # 1 JARVIS SEC 05 - T 17 S - R 24 W NESS COUNTY KANSAS

CDL/CNL

DIL

MICRO

SONIC



COMMENTS:

DUE TO NEGATIVE DST RESULTS

THIS WELL WAS PLUGGED

AS DRY & ABANDONED

KEVIN L. KESSLER