



Spud: 5/30/2013

Current

Field  
 County Comanche  
 State Kansas  
 Well Brentley 1-6RE  
 SH Location SEC 6 - T32S - R19W  
 Elevations 2163' KB, 2145' GL

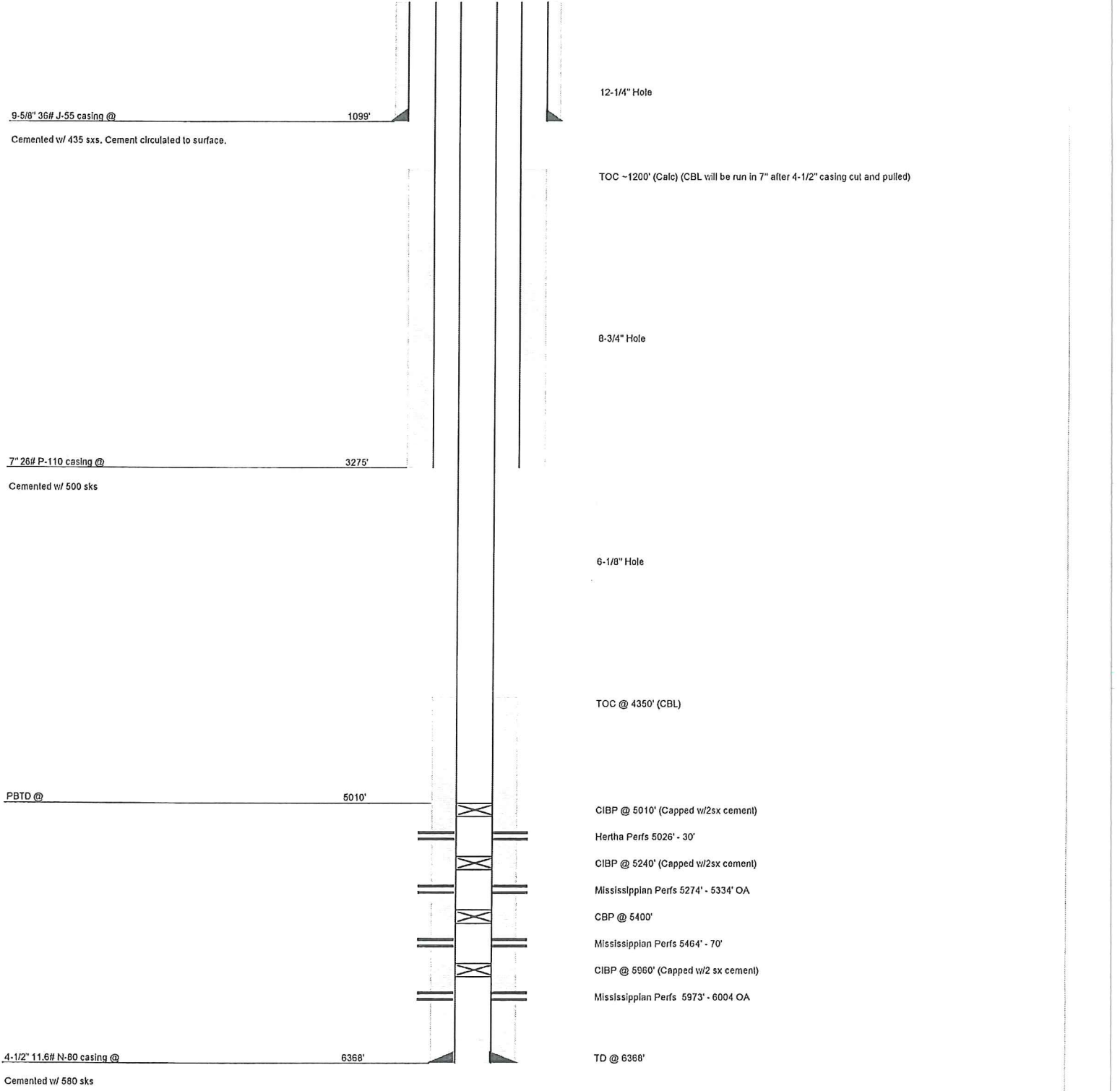
Wellbore Schematic

15-033-21614-02-00  
 API No.

Original Completion	<input type="checkbox"/>
Current	<input checked="" type="checkbox"/>
Workover	<input type="checkbox"/>
Proposed	<input type="checkbox"/>

Well Bore Data

MD



9-5/8" 36# J-55 casing @ 1099'  
 Cemented w/ 435 sxs. Cement circulated to surface.

12-1/4" Hole  
 TOC ~1200' (Calc) (CBL will be run in 7" after 4-1/2" casing cut and pulled)

7" 26# P-110 casing @ 3275'  
 Cemented w/ 500 sxs

8-3/4" Hole  
 6-1/8" Hole

PBITD @ 5010'

TOC @ 4350' (CBL)  
 CIBP @ 5010' (Capped w/2sx cement)  
 Hertha Perfs 5026' - 30'  
 CIBP @ 5240' (Capped w/2sx cement)  
 Mississippian Perfs 5274' - 5334' OA  
 CBP @ 5400'  
 Mississippian Perfs 5464' - 70'  
 CIBP @ 5960' (Capped w/2 sx cement)  
 Mississippian Perfs 5973' - 6004' OA

4-1/2" 11.6# N-80 casing @ 6368'  
 Cemented w/ 580 sxs

TD @ 6368'