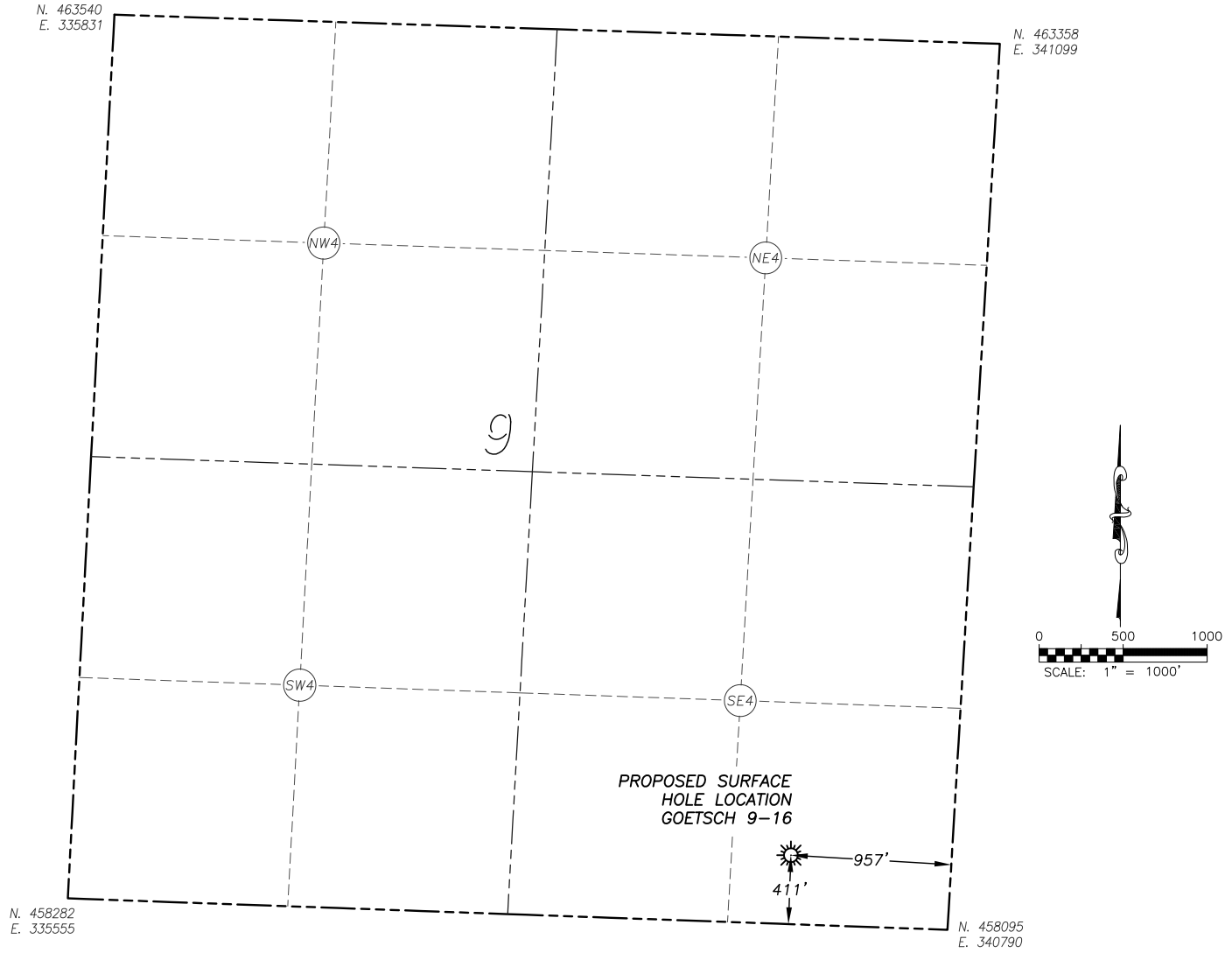


## WELL LOCATION MAP GOETSCH 9-16

SECTION 9, TOWNSHIP 6 SOUTH, RANGE 37 WEST OF THE 6TH PRINCIPAL MERIDIAN



**NAD 83 LATITUDE AND LONGITUDE**

**GOETSCH 9-16 SURFACE HOLE:**

LATITUDE: N39.54145°  
 LONGITUDE: W101.44909°  
 ELEVATION: 3421'  
 FOOTAGE: 411' FSL, 957' FEL  
 QTR/QTR: SE4/SE4  
 DATE: 10/25/2013

KANSAS STATE PLANE  
 NORTH ZONE COORDINATES:  
 NORTH: 458538  
 EAST: 339858

**NAD 27 LATITUDE AND LONGITUDE**

LATITUDE: N39.54145°  
 LONGITUDE: W101.44865°

IN ACCORDANCE WITH A REQUEST FROM McELVAIN ENERGY INC., DALEY LAND SURVEYING, INC. HAS DETERMINED THE SURFACE LOCATION OF THE GOETSCH 9-16 WELL TO BE 411' FSL, 957' FEL, AS MEASURED AT NINETY (90) DEGREES FROM THE SECTION LINES OF SECTION 9, TOWNSHIP 6 SOUTH, RANGE 37 WEST OF THE 6TH PRINCIPAL MERIDIAN, SHERMAN COUNTY, KANSAS.

**NOTES:**

- 1) HORIZONTAL DATUM IS NAD83.
- 2) VERTICAL DATUM IS NAVD88 AND ORIGINATES FROM THE LOCAL C.O.R.S. NETWORK, UTILIZING THE GEOID09 MODEL.
- 3) COORDINATES SHOWN ARE KANSAS NORTH ZONE, STATE PLANE.
- 4) SURFACE USE: AGRICULTURAL.
- 5) EXISTING OVERHEAD POWER RUNS N/S ALONG ROAD 35 ON EAST SIDE OF SECTION 10 APPROXIMATELY 1.2 MI. EAST OF PROPOSED LOCATION.
- 6) AN ALTERNATE LOCATION STAKE WAS SET AT 440' FSL, 975' FEL, NAD83 LATITUDE: N39.54153°, LONGITUDE: W101.44915°.
- 7) THIS MAP DOES NOT REPRESENT A BOUNDARY SURVEY, IT IS NOT A LAND SURVEY PLAT OR AN IMPROVEMENT SURVEY PLAT AND IT IS NOT TO BE RELIED UPON FOR THE ESTABLISHMENT OF FENCE, BUILDING OR OTHER FUTURE IMPROVEMENT LINES.

# ACCESS ROAD MAP GOETSCH 9-16

SECTION 9, TOWNSHIP 6 SOUTH, RANGE 37 WEST OF THE 6TH PRINCIPAL MERIDIAN

