

OPERATOR

Company: TDI, INC
 Address: 1310 BISON ROAD
 HAYS, KANSAS 67601

Contact Geologist: TOM DENNING
 Contact Phone Nbr: 785-628-2593
 Well Name: HENRY # 1
 Location: SW SE NE SW Sec.5-13s-20w
 Pool: SW SE NE SW Sec.5-13s-20w
 State: KANSAS
 API: 15-051-26,602-00-00
 Field: ELLIS SOUTHEAST
 Country: USA



TDI, Inc.
 1310 BISON ROAD
 HAYS, KANSAS 67601
 (785) 628-2593

Scale 1:240 Imperial

Well Name: HENRY # 1
 Surface Location: SW SE NE SW Sec.5-13s-20w
 Bottom Location:
 API: 15-051-26,602-00-00
 License Number: 4787
 Spud Date: 10/17/2013 Time: 5:00 PM
 Region: ELLIS COUNTY
 Drilling Completed: 10/22/2013 Time: 3:38 AM
 Surface Coordinates: 1325' FSL & 2000' FWL
 Bottom Hole Coordinates:
 Ground Elevation: 2133.00ft
 K.B. Elevation: 2143.00ft
 Logged Interval: 3100.00ft To: 3930.00ft
 Total Depth: 3930.00ft
 Formation: LANSING-KANSAS CITY
 Drilling Fluid Type: CHEMICAL/FRESH WATER GEL

SURFACE CO-ORDINATES

Well Type: Vertical
 Longitude: -99.5691344 Latitude: 38.946438
 N/S Co-ord: 1325' FSL
 E/W Co-ord: 2000' FWL

LOGGED BY

Company: SOLUTIONS CONSULTING, INC.
 Address: 108 W 35TH
 HAYS, KS 67601

Phone Nbr: (785) 639-1337
 Logged By: Geologist Name: HERB DEINES

CONTRACTOR

Contractor: SOUTHWIND DRILLING, INC.
 Rig #: 1
 Rig Type: MUD ROTARY
 Spud Date: 10/17/2013 Time: 5:00 PM
 TD Date: 10/22/2013 Time: 3:38 AM
 Rig Release: Time:

ELEVATIONS

K.B. Elevation: 2143.00ft Ground Elevation: 2133.00ft
 K.B. to Ground: 10.00ft

NOTES

RECOMMENDATION TO PLUG AND ABANDON WELL BASED ON NEGATIVE RESULTS OF DSTS AND LOG EVALUATION

OPEN HOLE LOGGING BY PIONEER ENERGY SERVICES, DUAL INDUCTION LOG, DUAL COMPENSATED POROSITY LOG, MICRORESISTIVITY LOG

DRILL STEM TESTING BY TRILOBITE TESTING INC: ONE (1) CONVENTIONAL TEST, ONE (1) FAILED STRADDLE TEST, TWO (2) SUCCESSFUL STRADDLE TESTS FOR A TOTAL OF FOUR (4) TESTS

FORMATION TOPS SUMMARY AND CHRONOLOGY OF DAILY ACTIVITY

HENRY # 1	WIESNER UNIT #1
SW SE NE SW	NE NE SW
Sec. 5-13s-20w	Sec. 5-13s-20w
2133' GL 2143' KB	Reference Well

FORMATION

SAMPLE TOPS

LOG TOPS


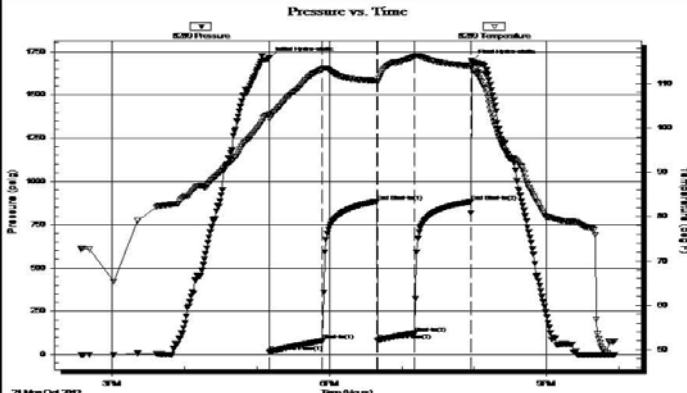
LOG TOPS

FORMATION	SAMPLE TOPS	LOG TOPS	LOG TOPS
Anhydrite	1488+ 655	1481+ 662	+ 664
B-Anhydrite	1545+ 598	1528+ 615	+ 616
Topeka	3168-1025	3169-1026	-1022
Heebner Shale	3397-1254	3399-1256	-1252
Toronto	3420-1277	3421-1278	-1275
LKC	3438-1295	3438-1295	-1292
BKC	3687-1544	3682-1539	-1538
Marmaton-Pawnee	3737-1594	3738-1595	-1589
Arbuckle	3828-1685	3821-1678	-1662
RTD	3930-1787		
LTD		3930-1787	-1787


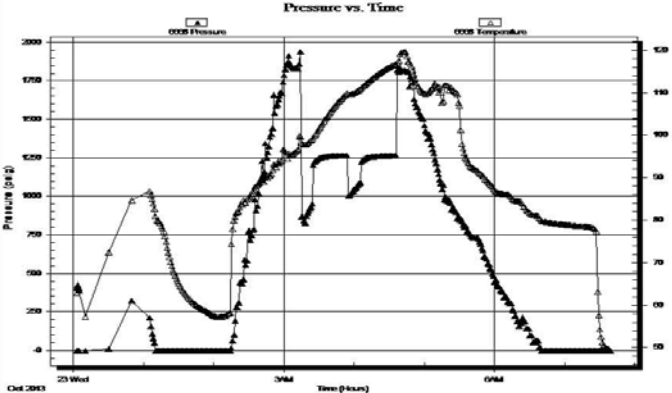
SUMMARY OF DAILY ACTIVITY

- 10-17-13 RU, spud 4:00PM, set 8 5/8" to 222' w/ 150 sxs Common 2%Gel 3%CC, plug down 10:15PM, WOC 8 hrs, slope 3/4 degree
- 10-18-13 256', drill plug at 6:15 AM
- 10-19-13 2144', drilling
- 10-20-13 3035', drilling, displace 3092'-3113'
- 10-21-13 3585', CFS 3595', DST #1 3556'-3595' "H" LKC, slope 1/2 degree
- 10-22-13 3710', drilling, RTD 3930'@3:38PM, Mini ST, CCH, TOWB, logs, start DST #2 straddle test of Marmaton 3744'-3798'
- 10-23-13 3930', DST #2 misrun-pkr failure, straddle DST # 3 3744'-3823' Marmaton, TIWB, CCH, TOWB, start DST # 4 straddle test 3588'-3610' "I" LKC
- 10-24-13 3930', finish DST # 4, P & A

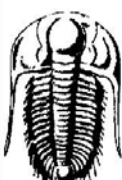
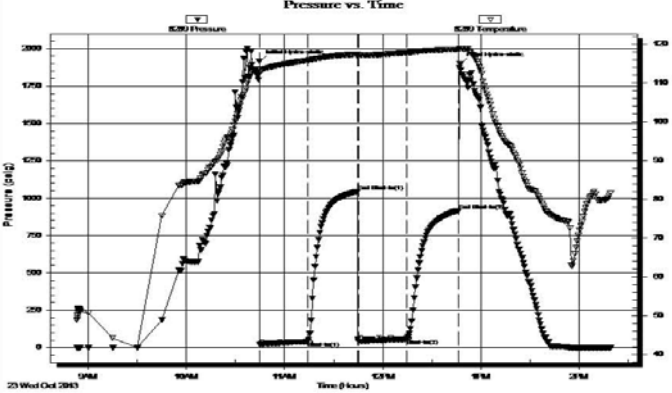
DST # 1 TEST SUMMARY

	DRILL STEM TEST REPORT																																					
	TDI Inc. 1310 Bison Rd Hays KS 67601 ATTN: Herb Deines	5 13s 20w Ellis Henry # 1 Job Ticket: 52269 Test Start: 2013.10.21 @ 14:34:00	DST#: 1																																			
GENERAL INFORMATION: Formation: LKC " H " Deviated: No Whipstock: 2151.00 ft (KB) Time Tool Opened: 17:10:15 Time Test Ended: 21:57:00 Test Type: Conventional Bottom Hole (Initial) Tester: Jim Svaty Unit No: 54 Interval: 3556.00 ft (KB) To 3595.00 ft (KB) (TVD) Total Depth: 3595.00 ft (KB) (TVD) Hole Diameter: 7.88 inches Hole Condition: Fair Reference Elevations: 2151.00 ft (KB) 2141.00 ft (CF) KB to GR/CF: 10.00 ft																																						
Serial #: 8289 Outside Press@RunDepth: 124.22 psig @ 3557.00 ft (KB) Start Date: 2013.10.21 End Date: 2013.10.21 Start Time: 14:34:02 End Time: 21:57:00 Capacity: 8000.00 psig Last Calib.: 2013.10.21 Time On Btm: 2013.10.21 @ 17:10:00 Time Off Btm: 2013.10.21 @ 19:57:45																																						
TEST COMMENT: 45-IFP- Surface Blow Building to 10 in. 45-ISIP- No Blow 30-FFP- No Blow Flushed - No Blow 45-FSP- No Blow																																						
	PRESSURE SUMMARY																																					
	<table border="1"> <thead> <tr> <th>Time (Min.)</th> <th>Pressure (psig)</th> <th>Temp (deg F)</th> <th>Annotation</th> </tr> </thead> <tbody> <tr><td>0</td><td>1713.59</td><td>103.07</td><td>Initial Hydro-static</td></tr> <tr><td>1</td><td>15.14</td><td>102.02</td><td>Open To Flow (1)</td></tr> <tr><td>45</td><td>79.83</td><td>113.24</td><td>Shut-In(1)</td></tr> <tr><td>90</td><td>884.60</td><td>110.66</td><td>End Shut-In(1)</td></tr> <tr><td>90</td><td>81.97</td><td>110.42</td><td>Open To Flow (2)</td></tr> <tr><td>121</td><td>124.22</td><td>116.13</td><td>Shut-In(2)</td></tr> <tr><td>167</td><td>882.05</td><td>113.98</td><td>End Shut-In(2)</td></tr> <tr><td>168</td><td>1699.51</td><td>114.07</td><td>Final Hydro-static</td></tr> </tbody> </table>	Time (Min.)	Pressure (psig)	Temp (deg F)	Annotation	0	1713.59	103.07	Initial Hydro-static	1	15.14	102.02	Open To Flow (1)	45	79.83	113.24	Shut-In(1)	90	884.60	110.66	End Shut-In(1)	90	81.97	110.42	Open To Flow (2)	121	124.22	116.13	Shut-In(2)	167	882.05	113.98	End Shut-In(2)	168	1699.51	114.07	Final Hydro-static	
Time (Min.)	Pressure (psig)	Temp (deg F)	Annotation																																			
0	1713.59	103.07	Initial Hydro-static																																			
1	15.14	102.02	Open To Flow (1)																																			
45	79.83	113.24	Shut-In(1)																																			
90	884.60	110.66	End Shut-In(1)																																			
90	81.97	110.42	Open To Flow (2)																																			
121	124.22	116.13	Shut-In(2)																																			
167	882.05	113.98	End Shut-In(2)																																			
168	1699.51	114.07	Final Hydro-static																																			
Recovery	Gas Rates																																					
<table border="1"> <thead> <tr> <th>Length (ft)</th> <th>Description</th> <th>Volume (bbl)</th> </tr> </thead> <tbody> <tr> <td>240.00</td> <td>MCV 5% m 95% w</td> <td>3.37</td> </tr> <tr><td> </td><td> </td><td> </td></tr> <tr><td> </td><td> </td><td> </td></tr> <tr><td> </td><td> </td><td> </td></tr> <tr><td> </td><td> </td><td> </td></tr> </tbody> </table>	Length (ft)	Description	Volume (bbl)	240.00	MCV 5% m 95% w	3.37													<table border="1"> <thead> <tr> <th>Choke (inches)</th> <th>Pressure (psig)</th> <th>Gas Rate (Mcf/d)</th> </tr> </thead> <tbody> <tr><td> </td><td> </td><td> </td></tr> <tr><td> </td><td> </td><td> </td></tr> <tr><td> </td><td> </td><td> </td></tr> </tbody> </table>			Choke (inches)	Pressure (psig)	Gas Rate (Mcf/d)														
Length (ft)	Description	Volume (bbl)																																				
240.00	MCV 5% m 95% w	3.37																																				
Choke (inches)	Pressure (psig)	Gas Rate (Mcf/d)																																				


DST # 2 STRADDLE TEST 3744' TO 3798' MARMATON BOTTOM PACKER FAILED

	TRILOBITE TESTING, INC.	DRILL STEM TEST REPORT																									
	TDI Inc. 1310 Bison Rd Hays KS 67601 ATTN: Herb Deines	5 13s 20w Ellis Henry # 1 Job Ticket: 52270 DST#: 2 Test Start: 2013.10.23 @ 00:03:00																									
GENERAL INFORMATION: Formation: Marmaton Deviated: No Whipstock: 2151.00 ft (KB) Time Tool Opened: 03:15:15 Time Test Ended: 07:40:00 Test Type: Conventional Straddle (Reset) Tester: Jim Svaty Unit No: 54 Interval: 3744.00 ft (KB) To 3798.00 ft (KB) (TVD) Total Depth: 3595.00 ft (KB) (TVD) Reference Elevations: 2151.00 ft (KB) 2141.00 ft (CF) Hole Diameter: 7.88 inches Hole Condition: Fair KB to GR/CF: 10.00 ft																											
Serial #: 6668 Below (Straddle) Press@RunDepth: psig @ 3803.00 ft (KB) Capacity: 8000.00 psig Start Date: 2013.10.23 End Date: 2013.10.23 Last Calib.: 2013.10.23 Start Time: 00:03:02 End Time: 07:39:45 Time On Btm: Time Off Btm:																											
TEST COMMENT: 10-IFP- BOB in 40 sec. 30-ISIP- No Blow 10-FFP- BOB in 40 sec. 30-FSP- No Blow																											
	PRESSURE SUMMARY																										
	Time (Min.)	Pressure (psig)	Temp (deg F)	Annotation																							
Recovery	Gas Rates																										
<table border="1" style="width:100%; border-collapse: collapse;"> <thead> <tr> <th>Length (ft)</th> <th>Description</th> <th>Volume (bbl)</th> </tr> </thead> <tbody> <tr> <td>434.00</td> <td>MCW 15% m 85% w</td> <td>6.09</td> </tr> <tr> <td>1184.00</td> <td>MCW 40% m 60% w</td> <td>16.61</td> </tr> <tr> <td>372.00</td> <td>Mud 100%</td> <td>5.22</td> </tr> <tr> <td> </td> <td> </td> <td> </td> </tr> <tr> <td> </td> <td> </td> <td> </td> </tr> </tbody> </table>	Length (ft)	Description	Volume (bbl)	434.00	MCW 15% m 85% w	6.09	1184.00	MCW 40% m 60% w	16.61	372.00	Mud 100%	5.22							<table border="1" style="width:100%; border-collapse: collapse;"> <thead> <tr> <th>Choke (inches)</th> <th>Pressure (psig)</th> <th>Gas Rate (Mc/d)</th> </tr> </thead> <tbody> <tr> <td> </td> <td> </td> <td> </td> </tr> </tbody> </table>			Choke (inches)	Pressure (psig)	Gas Rate (Mc/d)			
Length (ft)	Description	Volume (bbl)																									
434.00	MCW 15% m 85% w	6.09																									
1184.00	MCW 40% m 60% w	16.61																									
372.00	Mud 100%	5.22																									
Choke (inches)	Pressure (psig)	Gas Rate (Mc/d)																									
<small>1 Recovery from multiple tests</small> Trilobite Testing, Inc Ref. No: 52270 Printed: 2013.10.23 @ 10:45:37																											

DST # 3 STRADDLE TEST 3744' TO 3823' MARMATON BOTTOM PACKER HELD

	TRILOBITE TESTING, INC.	DRILL STEM TEST REPORT																						
	TDI Inc. 1310 Bison Rd Hays KS 67601 ATTN: Herb Deines	5 13s 20w Ellis Henry # 1 Job Ticket: 52271 DST#: 3 Test Start: 2013.10.23 @ 08:53:00																						
GENERAL INFORMATION: Formation: Marmaton Deviated: No Whipstock: 2151.00 ft (KB) Time Tool Opened: 10:44:45 Time Test Ended: 14:20:00 Test Type: Conventional Straddle (Reset) Tester: Jim Svaty Unit No: 54 Interval: 3744.00 ft (KB) To 3823.00 ft (KB) (TVD) Total Depth: 3930.00 ft (KB) (TVD) Reference Elevations: 2151.00 ft (KB) 2141.00 ft (CF) Hole Diameter: 7.88 inches Hole Condition: Fair KB to GR/CF: 10.00 ft																								
Serial #: 8289 Outside Press@RunDepth: 57.34 psig @ 3751.00 ft (KB) Capacity: 8000.00 psig Start Date: 2013.10.23 End Date: 2013.10.23 Last Calib.: 2013.10.23 Start Time: 08:53:02 End Time: 14:19:45 Time On Btm: 2013.10.23 @ 10:44:30 Time Off Btm: 2013.10.23 @ 12:47:15																								
TEST COMMENT: 30-IFP- Good Surge on Open No Blow 30-ISIP- No Blow 30-FFP- Surface Blow Building to 3 in. 30-FSP- No Blow																								
	PRESSURE SUMMARY																							
	Time (Min.)	Pressure (psig)	Temp (deg F)	Annotation																				
	0	1916.84	113.73	Initial Hydro-static																				
	1	19.76	112.58	Open To Flow (1)																				
	30	40.58	115.93	Shut-In(1)																				
	60	1044.76	117.45	End Shut-In(1)																				
	61	41.63	117.18	Open To Flow (2)																				
	91	57.34	117.88	Shut-In(2)																				
	122	912.89	118.72	End Shut-In(2)																				
	123	1898.75	118.90	Final Hydro-static																				
Recovery	Gas Rates																							
<table border="1" style="width:100%; border-collapse: collapse;"> <thead> <tr> <th>Length (ft)</th> <th>Description</th> <th>Volume (bbl)</th> </tr> </thead> <tbody> <tr> <td>80.00</td> <td>MCW 40% m 60% w Show of Oil</td> <td>1.12</td> </tr> <tr> <td>10.00</td> <td>CO 100%</td> <td>0.14</td> </tr> <tr> <td> </td> <td> </td> <td> </td> </tr> <tr> <td> </td> <td> </td> <td> </td> </tr> </tbody> </table>	Length (ft)	Description	Volume (bbl)	80.00	MCW 40% m 60% w Show of Oil	1.12	10.00	CO 100%	0.14							<table border="1" style="width:100%; border-collapse: collapse;"> <thead> <tr> <th>Choke (inches)</th> <th>Pressure (psig)</th> <th>Gas Rate (Mc/d)</th> </tr> </thead> <tbody> <tr> <td> </td> <td> </td> <td> </td> </tr> </tbody> </table>			Choke (inches)	Pressure (psig)	Gas Rate (Mc/d)			
Length (ft)	Description	Volume (bbl)																						
80.00	MCW 40% m 60% w Show of Oil	1.12																						
10.00	CO 100%	0.14																						
Choke (inches)	Pressure (psig)	Gas Rate (Mc/d)																						

DST # 4 STRADDLE TEST 3588' TO 3610' "I" LKC BOTTOM PACKER HELD



DRILL STEM TEST REPORT

TDI Inc. **5 13s 20w Ellis**

1310 Bison Rd **Henry # 1**
Hays KS 67601
Job Ticket: 52272 **DST#: 4**

ATTN: Herb Deines Test Start: 2013.10.23 @ 21:04:00

GENERAL INFORMATION:

Formation: **LKC "I"**
 Deviated: No Whipstock: 2151.00 ft (KB)
 Time Tool Opened: 23:04:30
 Time Test Ended: 02:22:00

Test Type: Conventional Straddle (Reset)
 Tester: Jim Svaty
 Unit No: 54

Interval: **3588.00 ft (KB) To 3610.00 ft (KB) (TVD)**
 Total Depth: 3930.00 ft (KB) (TVD)
 Hole Diameter: 7.88 inches-Hole Condition: Fair

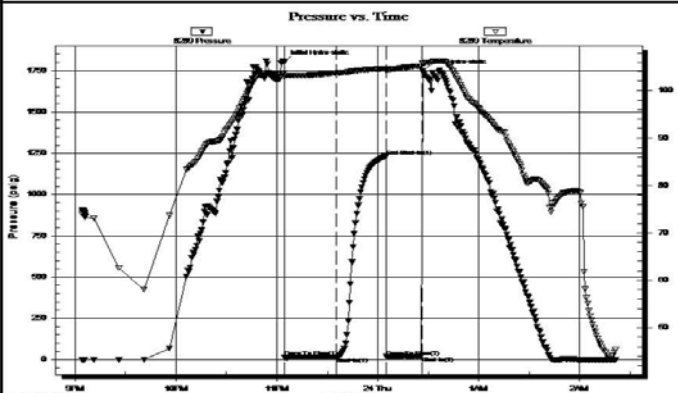
Reference Elevations: 2151.00 ft (KB)
 2141.00 ft (CF)
 KB to GR/CF: 10.00 ft

Serial #: 8289 Outside

Press@RunDepth: 15.36 psig @ 3589.00 ft (KB)
 Start Date: 2013.10.23 End Date: 2013.10.24
 Start Time: 21:04:02 End Time: 02:21:45

Capacity: 8000.00 psig
 Last Calib.: 2013.10.24
 Time On Btm: 2013.10.23 @ 23:04:15
 Time Off Btm: 2013.10.24 @ 00:26:30

TEST COMMENT: 30-IFP- Surface Blow
 30-ISIP- No Blow
 20-FFP- No Blow Flushed at 15min. Good Surge No Blow
 Pulled



Time (Min.)	Pressure (psig)	Temp (deg F)	Annotation
0	1802.93	103.55	Initial Hydro-static
1	13.51	102.87	Open To Flow (1)
31	15.36	103.71	Shut-In(1)
61	1232.44	104.66	End Shut-In(1)
61	17.60	104.07	Open To Flow (2)
82	20.20	105.15	Shut-In(2)
83	1748.06	105.72	Final Hydro-static

Length (ft)	Description	Volume (bbl)
5.00	Mud 100%	0.07

Choke (inches)	Pressure (psig)	Gas Rate (Mcf/d)

* Recovery from multiple tests

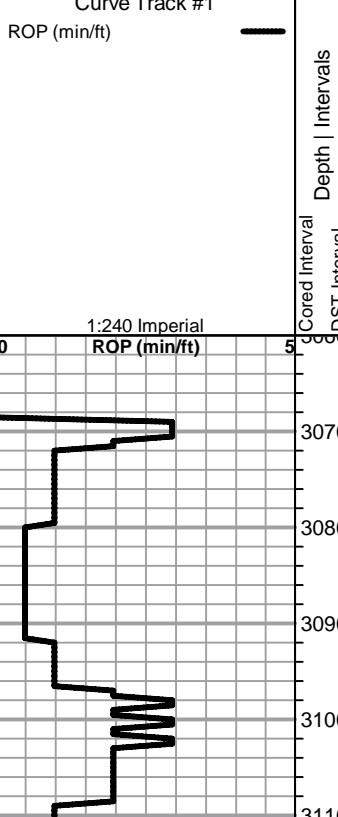
ROCK TYPES

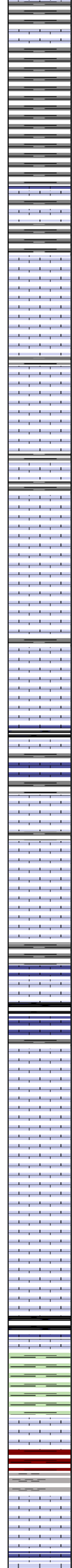
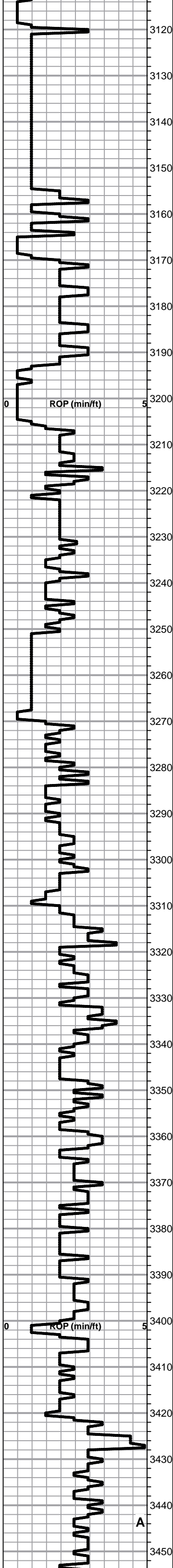
Clystgy	Dolsec	Lmst fw7>	shale, gry
Chtcong1	Dol Lime	Lscong1	Carbon Sh
Dolprim	Lmst fw<7	shale, grn	shale, red
			Shcol

ACCESSORIES

MINERAL	FOSSIL
P Pyrite	o Oolite
• Varicolored chert	• Oomoldic
△ Chert White	

Printed by GEOstrip VC Striplog version 4.0.7.0 (www.grsi.ca)

<p>Curve Track #1 ROP (min/ft)</p> 	<p>Depth Intervals DST</p>	<p>Lithology</p>	<p>Oil Show</p>	<p>Geological Descriptions</p> <p>BEGIN 1' DRILL TIME FROM 3060' TO RTD BEGIN 10' WET AND DRY SAMPLES FROM 3060' TO RTD</p> <p>ANHYDRITE TOP 1481+662 ANHYDRITE BASE 1528+615</p> <p>Lime, grayish brn, fnxln, fossiliferous in part</p> <p>Shale, lt gray, forming soft mud</p>	<p>Curve Track #3</p> <p>1:240 Imperial</p> <p>8 5/8" SET TO 222' W/ 150 SXS COMMON 2%GEL 3%CC</p> <p>SLOPE @ 226' 3/4 DEGREE</p>
--	----------------------------------	------------------	-----------------	--	--



Shale, lt gray, soft sticky clumps
 Lime, dark brn, fnxln

Shale, lt-med gray, soft blocky to sticky clumps in part

Lime, crm-gray, soft chalk
 Shale, lt gray, soft sticky clumps
TOPEKA ELog 3169-1026
 Lime, lt brn, fnxln
 Lime, lt brn-lt grayish brn, fnxln-granular
 Lime, lt brn, bedded chalk, few chips micro xln
 Lime, lt brn, granular-micro oomoldic, mostly barren
 Lime, lt brn-med gray, fnxln
 Lime, lt-med brn, fnxln, bedded chalk in part
 Lime, lt-med brn, fn-vfxln
 Lime, lt-med brn, fnxln-granular in part, slight bedded chalk
 Lime, lt-med brn, fnxln-granular, slight chalk matrix in part
 Lime, lt-med brn, granular with sticky chalk clumps in part

Shale, black carbonaceous
 Lime, lt brn, fnxln-granular in part

Lime, lt-med brn, granular-fnxln
 Lime, crm, fnxln, some lithographic
 Lime, crm-tan, fnxln, bedded chalk in part
 Lime, crm-lt brn, fnxln, slight bedded chalk
 Lime, crm-lt brn, fnxln

Shale, black carbonaceous
 Lime, crm-lt brn, fn-micro xln

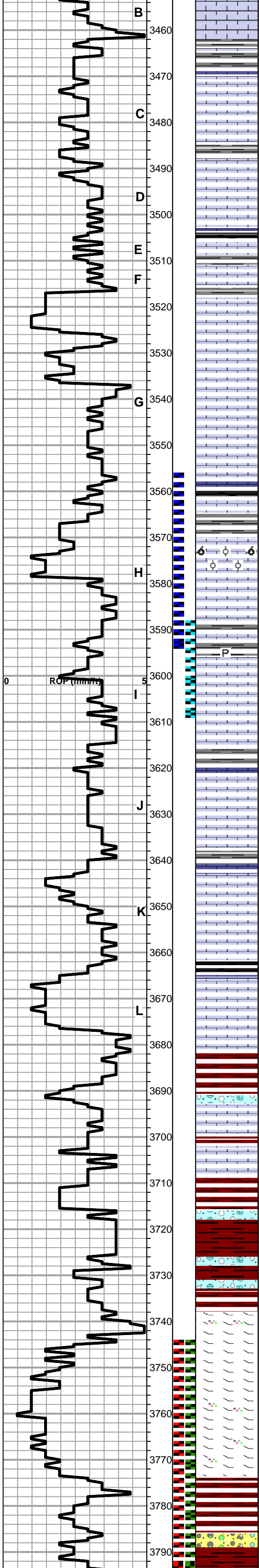
Lime, tan-lt brn, fnxln-granular, slightly fossiliferous, NS
 Limek tan-lt brn, fnxln-granular, slight bedded chalk, NS
 Lime, tan-lt brn, fnxln-granular in part, slight chalk
 Lime, tan-lt brn, fnxln with darker brn lime in part
 Lime, tan-lt brn, fnxln
 Lime, tan-lt brn, fnxln

HEEBNER SHALE ELog 3399-1256
 Shale, black carbonaceous, fissile, blocky
 Lime, tan-lt brn, fn-vfxln

Shale, lime green, soft sticky mud clumps

TORONTO ELog 3421-1278
 Lime, crm-tan, fn-micro xln, thin hard bedded chalk, NS
 Shale, reddish brn, forming soft mud

LKC ELog 3438-1295
 Lime, crm-tan, fnxln, few chips spotty stain in fossiliferous-oolitic mix, NFO, No Odor, appears poorly developed
 Lime, tan-lt gray, fnxln, NS



Lime, lt gray-crm, fnxln, NS

Shale, lime green forming soft mud

Lime, tan-lt brn-brn, fnxln

Lime, tan-lt brn, fnxln, thin bedded oolitic with spotty stain, NFO, v lt odor, not well developed

Lime, crm-tan, fnxln-granular, slight bedded chalk, NS

Lime, crm-tan, fn-vfxln, slight chalk

Shale, gray-black carbonaceous
Lime, very lt gray tinted, fnxln

Lime, off white with gray mottling in part, bedded chalk

Lime, crm-tan, granular with chalk, few chips with lt oil specks on crush

Lime, crm-tan, fnxln-granular, bedded chalk, NS

Lime, tan, fnxln, bedded chalk in part

Lime, crm-tan, fnxln, bedded chalk

Lime, crm-tan, fnxln, bedded chalk

Shale, gray-black carbonaceous
Lime, tan-lt brn, fnxln

Zone of fine oolitic material with vug development, lt staining, lt odor, NFO

Lime, lt brn, fn-vfxln

Lime, lt brn, fn-vfxln

Lime, white-crm, fnxln, lot of black dead flaky staining, NFO, No Odor

Lime, crm-lt brn, fn-vfxln, slight bedded chalk

Lime, crm-tan, fn-vfxln, slight chalk

Lime, crm, fn-micro xln, slight bedded chalk, NS

Lime, crm, fnxln, white chalk wash, NS

Lime, crm, fn-vfxln, white chalk wash

Lime, tan-lt brn, fn-vfxln, slight chalk

Shale, gray-black carbonaceous

Lime, crm-tan, fnxln, bedded chalk, few pcs vuggy dolomitic, NS

BKC ELog 3682-1539

Shale, red, dove gray, forming soft mud with red soft sticky

Lime, white-crm, fnxln, slight bedded chalk

Lime, white-crm, fnxln

Shale, lt red wash, soft mud with clastic lime mix in part

Lime, clastic mix with red shale staining

Shale, red soft mud-brn, firm blocky

Shale, reds, brns, maroon, soft blocky

MARMATON ELog 3738-1595

Lime, crm-tan, fnxln, orange chert fragments in part

Lime, crm-tan, fnxln-granular with thin vuggy development, lt odor with lt even staining

Lime, crm, fnxln-granular, lt even staining, dolomitic in part, very lt odor

Lime, crm-tan, fnxln, increasing chert content, tans, reds, orange, fresh, sharp

Shale, red, brn, soft-firm blocky

Shale, red-dark brn, lt red wash, soft mud to firm blocky

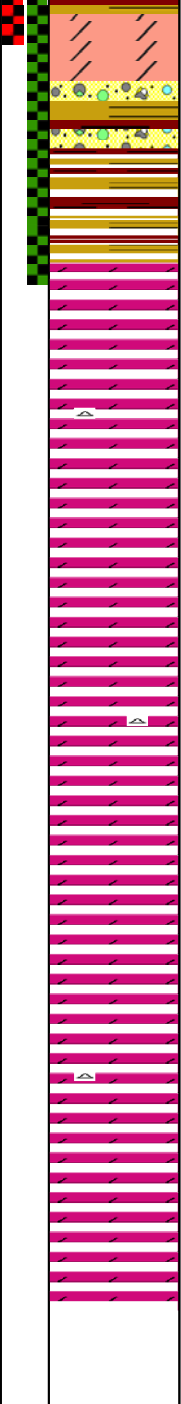
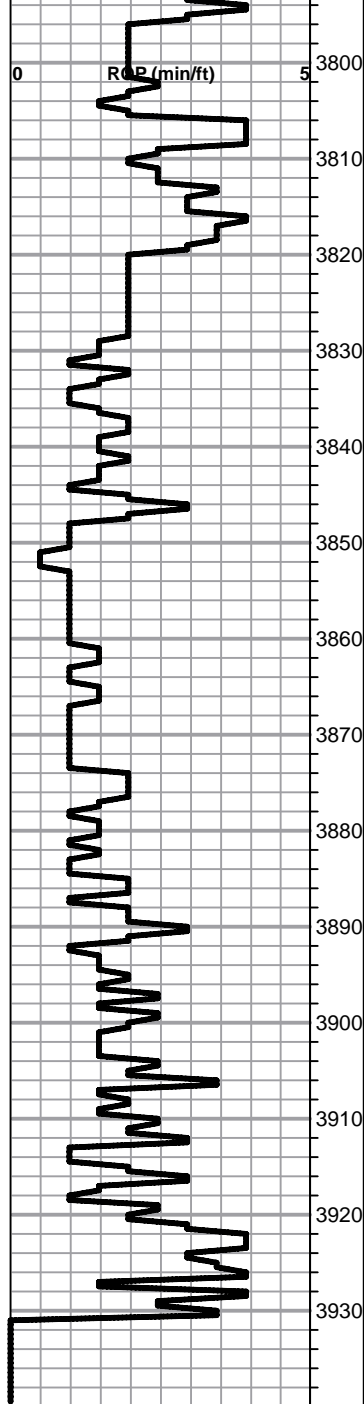
Shale, lt red wash

DST # 1 3556' TO 3595' SEE HEADER FOR TEST SUMMARY

DST # 4 3588' TO 3610' SEE HEADER FOR TEST SUMMARY

DST # 2 3744' TO 3798' PACKER FAILURE- BOTTOM PACKER FAILED TO SEAL OFF ARBUCKLE

DST # 3 3744' TO 3823' SEE HEADER FOR TEST SUMMARY



Lime, white to cream, fine grained, soft sucrosic, NS, very similar to simpson dolomite in appearance

Shales and cherts, vari color

Shale, reds, brns, maroon, firm blocky

ARBUCKLE ELog 3821-1678

Dolomite, ivory-cream, granular, fn-cxln, sucrosic, It sheen on crush with lt staining in part, no detectable odor due to heavy mix of slough

Dolomite, ivory-cream, granular, fn-cxln, sucrosic, mostly clean with no stain or SFO or odor

Dolomite, ivory-cream, granular-fnxln

Dolomite, ivory-cream, granular, sucrosic, fn-cxln

Dolomite, ivory-cream, fnxln-granular, sucrosic in part, few pyrite crystalline clusters

Dolomite, ivory, sucrosic, med-cxln

Dolomite, as above

Dolomite, as above

Dolomite, as above

Dolomite, as above

RTD 3930-1787 LTD 3930-1787

SLOPE @3930' 1 DEGREE

QUALITY OILWELL CEMENTING, INC.

Federal Tax I.D.# 20-2886107

Phone 785-483-2025
Cell 785-324-1041

Home Office P.O. Box 32 Russell, KS 67665

No. 7454

Date	10-17-73	Sec.	Twp.	Range	County	State	On Location	Finish
					Ellis	KS		10:15p.m.
Le					Location			
Henry # 1					Casey's West to Rg			
Well No. 1					Owner			
Contractor					To Quality Oilwell Cementing, Inc.			
Southwest #1					You are hereby requested to rent cementing equipment and furnish			
Type Job					cement and helper to assist owner or contractor to do work as listed.			
Surface								
Hole Size					Charge			
12 1/4					To			
Csg.					T.D.J			
8 5/8								
Tbg. Size					Street			
					City			
Tool					State			
Cement Left in Csg.					The above was done to satisfaction and supervision of owner agent or contractor.			
15'					Cement Amount Ordered			
Shoe Joint					150cm 3/CC 2/6E2			
Meas Line								
Displace								
13 1/2 B.L								
EQUIPMENT					Common			
					150			
Pumptrk					Poz. Mix			
16 No.								
Cementer					Gel.			
Helper					3			
No.					Calcium			
Driver					5			
Bulktrk								
9 No.								
Driver								
Driver								
Driver								
Jason V.								
JOB SERVICES & REMARKS					Hulls			
Remarks:					Salt			
Rat Hole					Flowseal			
Mouse Hole					Kol-Seal			
Centralizers					Mud CLR 48			
Baskets					CFL-117 or CD110 CAF 38			
D/V or Port Collar					Sand			
8 5/8 on bottom. Est. Circulation					Handling			
Mix 150 4C + Displace					158			
Cement (Cement)					Mileage			
FLOAT EQUIPMENT					Guide Shoe			
					Centralizer			
					Baskets			
					8 5/8 Swage			
					AFU Inserts			
					Float Shoe			
					Latch Down			
					Pumptrk Charge			
					Surface			
					Mileage			
					17			
					Tax			
					Discount			
					Total Charge			
X Signature								

QUALITY OILWELL CEMENTING, INC.

Federal Tax I.D.# 20-2886107

Phone 785-483-2025
Cell 785-324-1041

Home Office P.O. Box 32 Russell, KS 67665

No. 7543

Date	Sec.	Twp.	Range	County	State	On Location	Finish
10-24-13	5	13	20	Ellis	KS		1:45 PM

Location Ellis 3 blocks W of Caseys

Lease	Henry	Well No. #1	Owner
Contractor	Southwind #1		To Quality Oilwell Cementing, Inc. You are hereby requested to rent cementing equipment and furnish cementer and helper to assist owner or contractor to do work as listed.
Type Job	Plug		Charge To
Hole Size	7 7/8	T.D. 3931	TDI
Csg. Drill Pipe		Depth	Street
Tbg. Size		Depth	City State
Tool		Depth	The above was done to satisfaction and supervision of owner agent or contractor.
Cement Left in Csg.		Shoe Joint	Cement Amount Ordered 270 60/40 4 1/2 gal 1/4 flow
Meas Line		Displace	

EQUIPMENT

Pumptrk 17	No.	Cementer	Common
		Helper Cody	162
Bulktrk 19	No.	Driver David	Poz. Mix 108
		Driver	Gel. 10
Bulktrk Pu	No.	Driver Brett	Calcium
		Driver	

JOB SERVICES & REMARKS

Remarks:	Hulls
Rat Hole - 30 sx	Salt
Mouse Hole - 15 sx	Flowseal 67#
Centralizers	Kol-Seal
Baskets	Mud CLR 48
D/V or Port Collar	CFL-117 or CD110 CAF 38
	Sand
	Handling 280
	Mileage

FLOAT EQUIPMENT

1st Plug @ 3800 w/ 50 sx	8 5/8
2nd Plug @ 1500 w/ 25 sx	Guide Shoe
3rd Plug @ 720 w/ 100 sx	Centralizer
4th Plug @ 275 w/ 40 sx	Baskets
5th Plug @ 40 w/ 10 sx	AFU Inserts
	Float Shoe
Rat hole - 30 sx	Latch Down
Mouse hole - 15 sx	Wood Plug - 1

Pumptrk Charge	plug
Mileage	17
	Tax
	Discount
	Total Charge

X Signature *Zany Beans*