



TRILOBITE TESTING, INC.

DRILL STEM TEST REPORT

Energy Investment Partners, LLC

16-34S-3W Sumner

PO Box 225878
Dallas, TX 75222

Turek 1-16

Job Ticket: 50921

DST#: 1

ATTN: Curtis Covey

Test Start: 2013.05.04 @ 02:20:39

GENERAL INFORMATION:

Formation: **Mississippi**

Deviated: No Whipstock: ft (KB)

Time Tool Opened: 07:00:55

Time Test Ended: 13:31:59

Test Type: Conventional Bottom Hole (Initial)

Tester: Leal Cason

Unit No: 45

Interval: 4248.00 ft (KB) To 4290.00 ft (KB) (TVD)

Reference Elevations: 1222.00 ft (KB)

Total Depth: 4290.00 ft (KB) (TVD)

1212.00 ft (CF)

Hole Diameter: 7.88 inches Hole Condition: Good

KB to GR/CF: 10.00 ft

Serial #: 6798

Inside

Press @ Run Depth: 371.39 psig @ 4249.00 ft (KB)

Capacity: 8000.00 psig

Start Date: 2013.05.04

End Date:

2013.05.04

Last Calib.:

2013.05.04

Start Time: 02:20:41

End Time:

13:31:59

Time On Btm:

2013.05.04 @ 06:57:25

Time Off Btm:

2013.05.04 @ 10:51:25

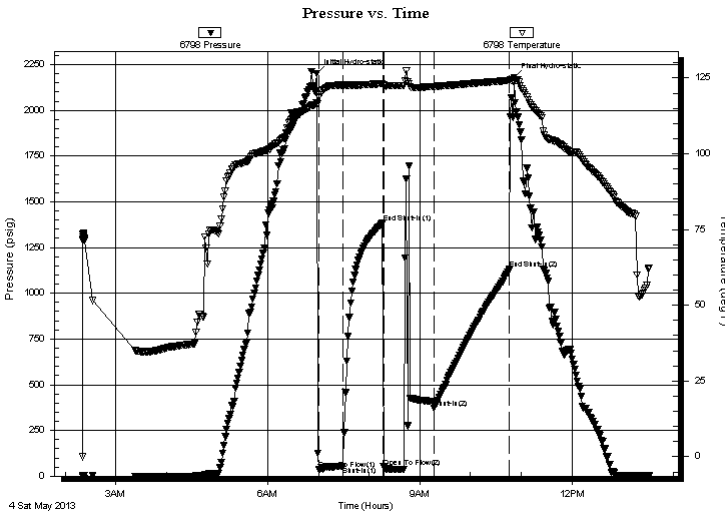
TEST COMMENT: IF: Strong Blow , BOB in 20 seconds, GTS in 19 minutes, Gauged Gas & Caught Sample

IS: No Blow Back

FF: Strong Blow , BOB & GTS Immediate, Gauged Gas, TSTM by 40 minutes

FS: NO Blow Back

PRESSURE SUMMARY



Time (Min.)	Pressure (psig)	Temp (deg F)	Annotation
0	2201.54	116.77	Initial Hydro-static
4	34.82	118.93	Open To Flow (1)
32	53.18	122.72	Shut-In(1)
79	1383.80	123.13	End Shut-In(1)
80	50.84	122.85	Open To Flow (2)
140	371.39	122.22	Shut-In(2)
229	1132.21	124.23	End Shut-In(2)
234	2179.74	123.89	Final Hydro-static

Recovery

Length (ft)	Description	Volume (bbl)
0.00	3533 GIP	0.00
698.00	SGCM 2%G 98%M	9.79

Gas Rates

	Choke (inches)	Pressure (psig)	Gas Rate (Mcf/d)
First Gas Rate	0.38	6.00	74.73
Last Gas Rate	0.38	1.00	56.41
Max. Gas Rate	0.38	10.00	89.38



**TRILOBITE
TESTING, INC.**

DRILL STEM TEST REPORT

FLUID SUMMARY

Energy Investment Partners, LLC

16-34S-3W Sumner

PO Box 225878
Dallas, TX 75222

Turek 1-16

Job Ticket: 50921

DST#: 1

ATTN: Curtis Covey

Test Start: 2013.05.04 @ 02:20:39

Mud and Cushion Information

Mud Type: Gel Chem

Cushion Type:

Oil API:

deg API

Mud Weight: 9.00 lb/gal

Cushion Length:

ft

Water Salinity:

ppm

Viscosity: 50.00 sec/qt

Cushion Volume:

bbbl

Water Loss: 9.19 in³

Gas Cushion Type:

Resistivity: ohm.m

Gas Cushion Pressure:

psig

Salinity: 4000.00 ppm

Filter Cake: 0.02 inches

Recovery Information

Recovery Table

Length ft	Description	Volume bbl
0.00	3533 GIP	0.000
698.00	SGCM 2%G 98%M	9.791

Total Length: 698.00 ft

Total Volume: 9.791 bbl

Num Fluid Samples: 0

Num Gas Bombs: 0

Serial #:

Laboratory Name:

Laboratory Location:

Recovery Comments:



**TRILOBITE
TESTING, INC.**

DRILL STEM TEST REPORT

GAS RATES

Energy Investment Partners, LLC

16-34S-3W Sumner

PO Box 225878
Dallas, TX 75222

Turek 1-16

Job Ticket: 50921

DST#: 1

ATTN: Curtis Covey

Test Start: 2013.05.04 @ 02:20:39

Gas Rates Information

Temperature: 59 (deg F)
Relative Density: 0.65
Z Factor: 0.8

Gas Rates Table

Flow Period	Elapsed Time	Choke (inches)	Pressure (psig)	Gas Rate (Mcf/d)
1	20	0.38	6.00	74.73
1	25	0.38	8.00	82.06
1	30	0.38	10.00	89.38
2	10	0.38	3.00	63.74
2	20	0.38	2.00	60.08
2	30	0.38	1.00	56.41

Pressure vs. Time

