



**TRILOBITE
TESTING, INC.**

DRILL STEM TEST REPORT

Energy Investment Partners, LLC

16-34S-3W Sumner

PO Box 225878
Dallas, TX 75222

Turek 1-16

Job Ticket: 50922

DST#: 2

ATTN: Curtis Covey

Test Start: 2013.05.06 @ 09:51:19

GENERAL INFORMATION:

Formation: **Simpson**

Deviated: No Whipstock: ft (KB)

Time Tool Opened: 12:34:49

Time Test Ended: 19:36:34

Test Type: Conventional Bottom Hole (Reset)

Tester: Leal Cason

Unit No: 45

Interval: 4597.00 ft (KB) To 4692.00 ft (KB) (TVD)

Reference Elevations: 1222.00 ft (KB)

Total Depth: 4692.00 ft (KB) (TVD)

1212.00 ft (CF)

Hole Diameter: 7.88 inches Hole Condition: Good

KB to GR/CF: 10.00 ft

Serial #: 6798

Inside

Press @ Run Depth: 374.55 psig @ 4598.00 ft (KB)

Capacity: 8000.00 psig

Start Date: 2013.05.06

End Date: 2013.05.06

Last Calib.: 2013.05.06

Start Time: 09:51:20

End Time: 19:36:34

Time On Btm: 2013.05.06 @ 12:25:49

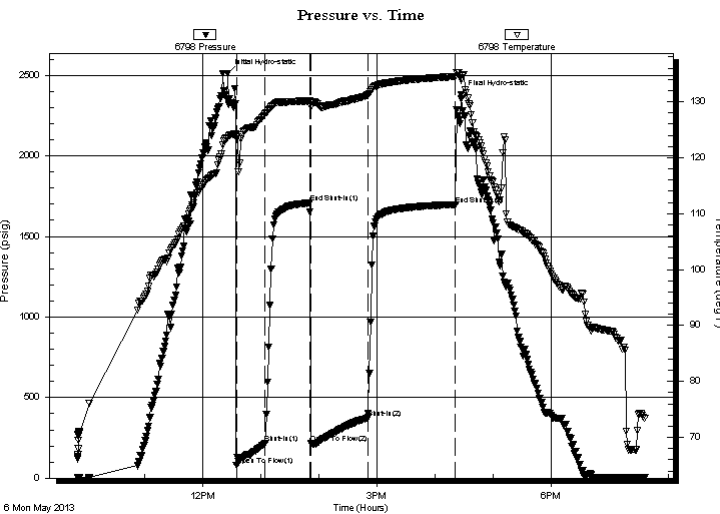
Time Off Btm: 2013.05.06 @ 16:26:34

TEST COMMENT: IF: Strong Blow, BOB in 90 seconds, GTS in 20 minutes, Gauged Gas & Caught Sample

ISI: Blow Back Built to 2 inches

FF: Strong Blow, BOB & GTS immediate, Gauged Gas

FSI: Blow Back Built to 2 inches



PRESSURE SUMMARY

Time (Min.)	Pressure (psig)	Temp (deg F)	Annotation
0	2510.39	123.60	Initial Hydro-static
9	79.69	123.74	Open To Flow (1)
39	215.42	127.76	Shut-In(1)
85	1707.84	130.14	End Shut-In(1)
87	215.93	129.16	Open To Flow (2)
145	374.55	131.20	Shut-In(2)
235	1698.45	134.49	End Shut-In(2)
241	2381.24	133.85	Final Hydro-static

Recovery

Length (ft)	Description	Volume (bbl)
0.00	3799 GIP	0.00
189.00	GSY MCO 5%G 32%M 63%O	2.65
567.00	GOCM 30%G 30%O 60%M	7.95
20.00	SOGCM 2%O 28%M 70%G	0.28

* Recovery from multiple tests

Gas Rates

	Choke (inches)	Pressure (psig)	Gas Rate (Mcf/d)
First Gas Rate	0.25	9.50	37.91
Last Gas Rate	0.25	26.00	64.09
Max. Gas Rate	0.25	26.00	64.09



**TRILOBITE
TESTING, INC.**

DRILL STEM TEST REPORT

FLUID SUMMARY

Energy Investment Partners, LLC

16-34S-3W Sumner

PO Box 225878
Dallas, TX 75222

Turek 1-16

Job Ticket: 50922

DST#: 2

ATTN: Curtis Covey

Test Start: 2013.05.06 @ 09:51:19

Mud and Cushion Information

Mud Type: Gel Chem

Cushion Type:

Oil API:

deg API

Mud Weight: 9.00 lb/gal

Cushion Length:

ft

Water Salinity:

ppm

Viscosity: 65.00 sec/qt

Cushion Volume:

bbbl

Water Loss: 9.79 in³

Gas Cushion Type:

Resistivity: ohm.m

Gas Cushion Pressure:

psig

Salinity: 7500.00 ppm

Filter Cake: 0.02 inches

Recovery Information

Recovery Table

Length ft	Description	Volume bbbl
0.00	3799 GIP	0.000
189.00	GSY MCO 5%G 32%M 63%O	2.651
567.00	GOCM 30%G 30%O 60%M	7.954
20.00	SOGCM 2%O 28%M 70%G	0.281

Total Length: 776.00 ft

Total Volume: 10.886 bbl

Num Fluid Samples: 0

Num Gas Bombs: 0

Serial #:

Laboratory Name:

Laboratory Location:

Recovery Comments:



**TRILOBITE
TESTING, INC.**

DRILL STEM TEST REPORT

GAS RATES

Energy Investment Partners, LLC

16-34S-3W Sumner

PO Box 225878
Dallas, TX 75222

Turek 1-16

Job Ticket: 50922

DST#: 2

ATTN: Curtis Covey

Test Start: 2013.05.06 @ 09:51:19

Gas Rates Information

Temperature: 59 (deg F)
Relative Density: 0.65
Z Factor: 0.8

Gas Rates Table

Flow Period	Elapsed Time	Choke (inches)	Pressure (psig)	Gas Rate (Mcf/d)
1	20	0.25	9.50	37.91
1	25	0.25	13.50	44.26
1	30	0.25	14.50	45.85
2	10	0.25	6.00	32.36
2	20	0.25	15.50	47.43
2	30	0.25	20.00	54.57
2	40	0.25	24.00	60.92
2	50	0.25	26.00	64.09
2	60	0.25	26.00	64.09

Pressure vs. Time

