

MUD LOG
WellSight Systems
Scale 1:240 (5"=100') Imperial
Measured Depth Log

Well Name: REEVES 2A
Location: SECTION 16-TWP 31S-9E
License Number: 15-049-22581
Spud Date:
Surface Coordinates: 660'FEL 2970' FSL
Region: ELK CO, KANSAS
Drilling Completed:

Bottom Hole
Coordinates:
Ground Elevation (ft): 1182
Logged Interval (ft): 1900 To: RTD
Formation: MISSISSIPPIAN
Type of Drilling Fluid: MUD/CHEM
K.B. Elevation (ft): 1189
Total Depth (ft): 2355

Printed by MUD.LOG from WellSight Systems 1-800-447-1534 www.WellSight.com

OPERATOR

Company: LONE WOLF OIL COMPANY
Address: BOX 241
MOLINE, KANSAS 67353
KLN 31119

GEOLOGIST

Name: JOE BAKER
Company:
Address: 401 E. DOUGLAS STE 525
WICHITA KANSAS 67002

DSTs

Comments

ROCK TYPES

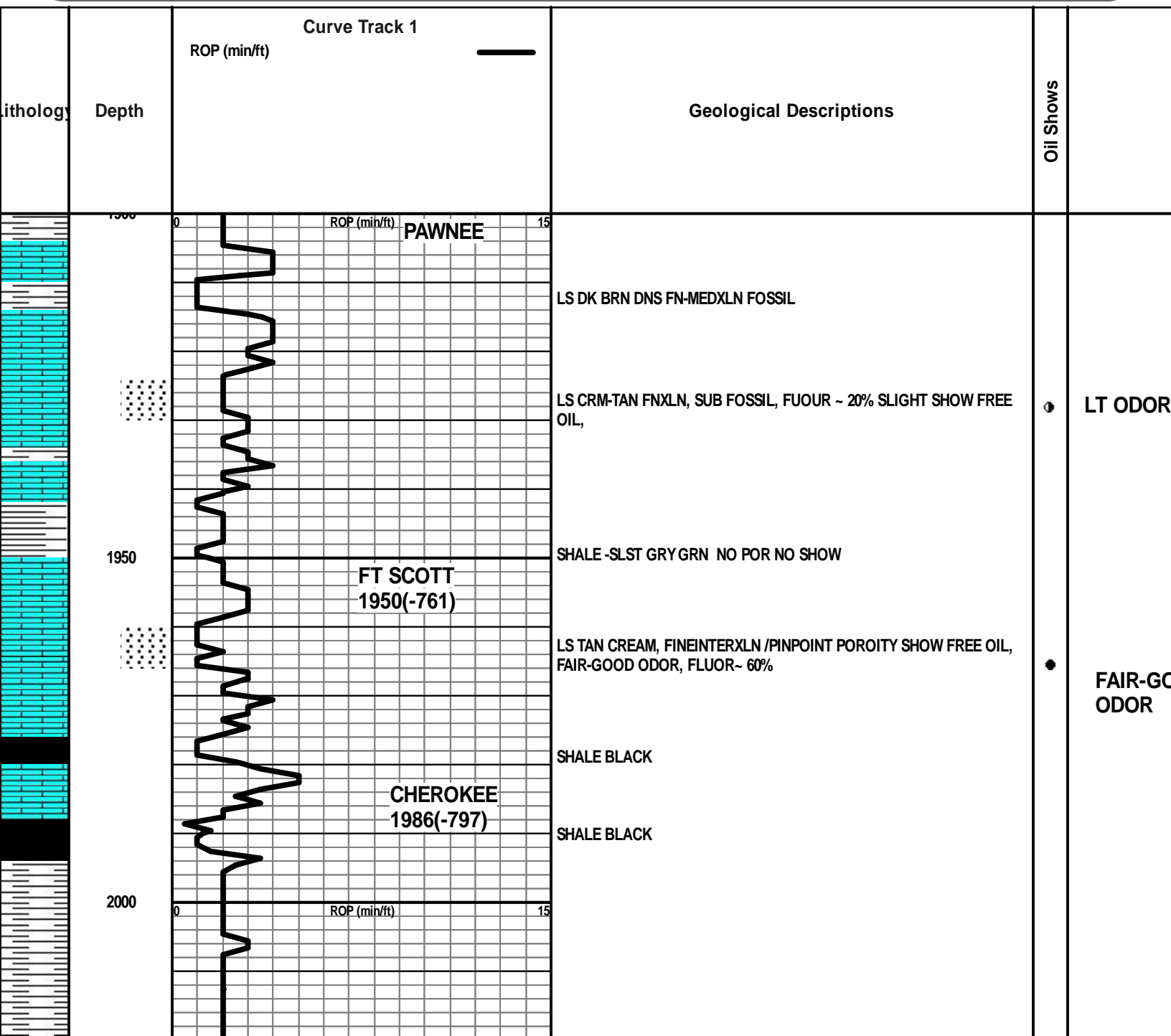
Anhy	Clyst	Gyp	Mrlst	Shgy
Bent	Coal	Igne	Salt	Sltst
Brec	Congl	Lmst	Shale	Ss
Cht	Dol	Meta	Shcol	Till

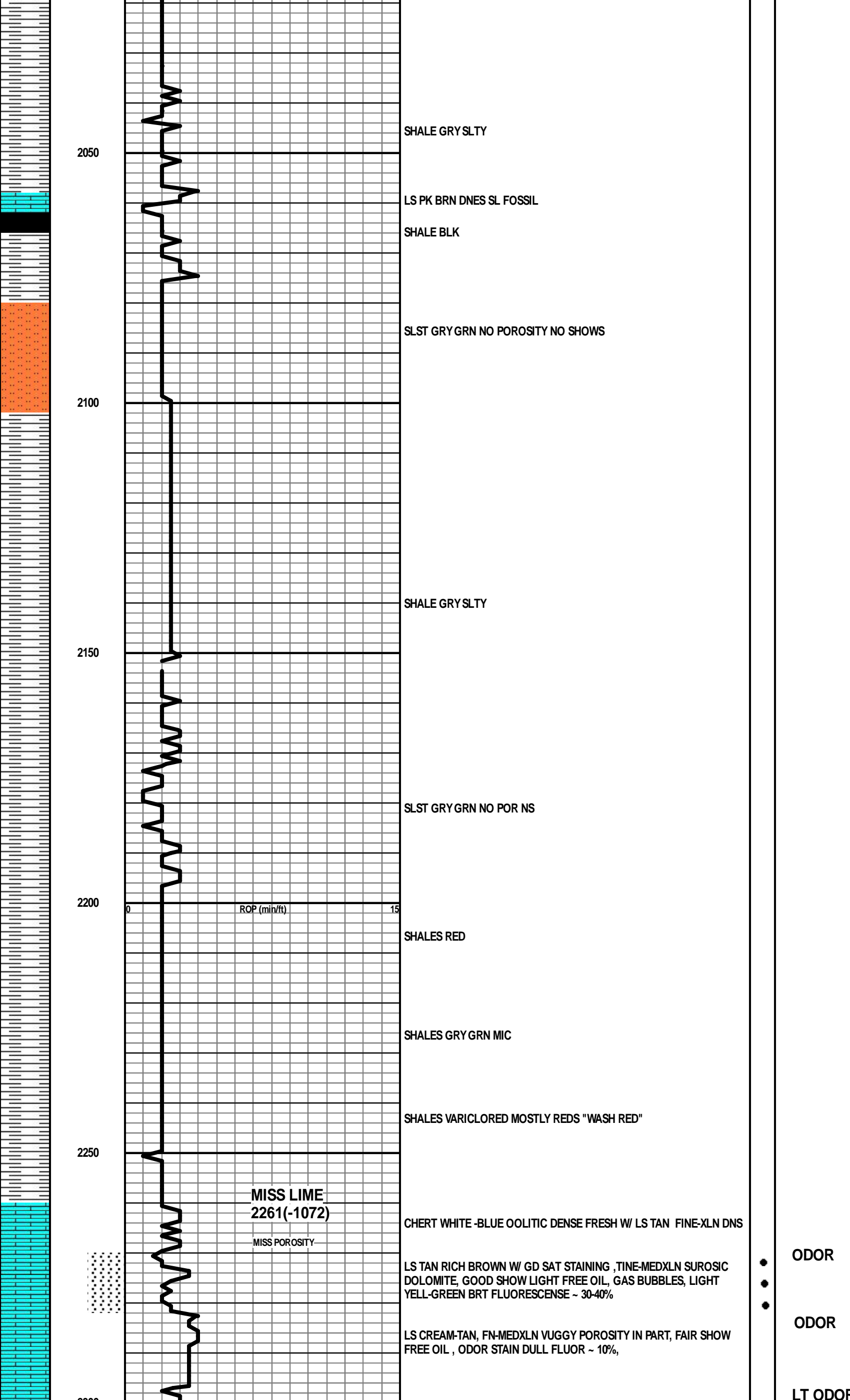
ACCESSORIES

MINERAL	Gyp	FOSSIL	Ostra	Sltstrg
Anhy	Hvymin	Algae	Pelec	Ssstrg
Arggrn	Kaol	Amph	Pellet	TEXTURE
Arg	Marl	Belm	Pisolite	Boundst
Bent	Minxl	Bioclst	Plant	Chalky
Bit	Nodule	Brach	Strom	Cryxln
Brecfrag	Phos	Bryozoa	STRINGER	Earthy
Calc	Pyr	Cephal	Anhy	Finexln
Carb	Salt	Coral	Arg	Grainst
Chtdk	Sandy	Crin	Bent	Lithogr
Chtlt	Silt	Echin	Coal	Microxln
Dol	Sil	Fish	Dol	Mudst
Feldspar	Sulphur	Foram	Gyp	Packst
Ferrpel	Tuff	Fossil	Ls	Wackst
Ferr		Gastro	Mrst	
Glau		Oolite		

OTHER SYMBOLS

POROSITY	Vuggy	ROUNDING	Spotted	EVENT
Earthy	SORTING	Rounded	Ques	Rft
Fenest	Well	Subrnd	Dead	Sidewall
Fracture	Moderate	Subang	INTERVAL	
Inter	Poor	Angular	Core	
Moldic		OIL SHOW	Dst	
Organic		Even		
Pinpoint				





2300

LS TAN SL DOLOMITIC FNXLN W/ INTERXLN POROSITY, SLIGHT SHOW FREE OIL.

LS AA TAN CRM FNXLN INCREASE IN DK DEAD HVY BLK STAINING

2350

RTD
2355(-1166)

