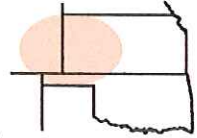


# Pro-Stake LLC

Oil Field & Construction Site Staking

P.O. Box 2324  
Garden City, Kansas 67846  
Office/Fax: (620) 276-6159  
Cell: (620) 272-1499

burt@pro-stakellc.kscoxmail.com



**111332L**  
PLAT NO.

**11283**  
INVOICE NO.

**Shakespeare Oil Company, Inc.**

OPERATOR

**Teeter #2-11**

LEASE NAME

**Logan County, KS**

COUNTY

**11 13s 32w**  
Sec. Twp. Rng.

**514' FSL - 1494' FEL**

LOCATION SPOT

SCALE: 1" = 1000'  
DATE: Nov. 8<sup>th</sup>, 2013  
MEASURED BY: Luke R.  
DRAWN BY: Drew H.  
AUTHORIZED BY: Don W. & Alex B.

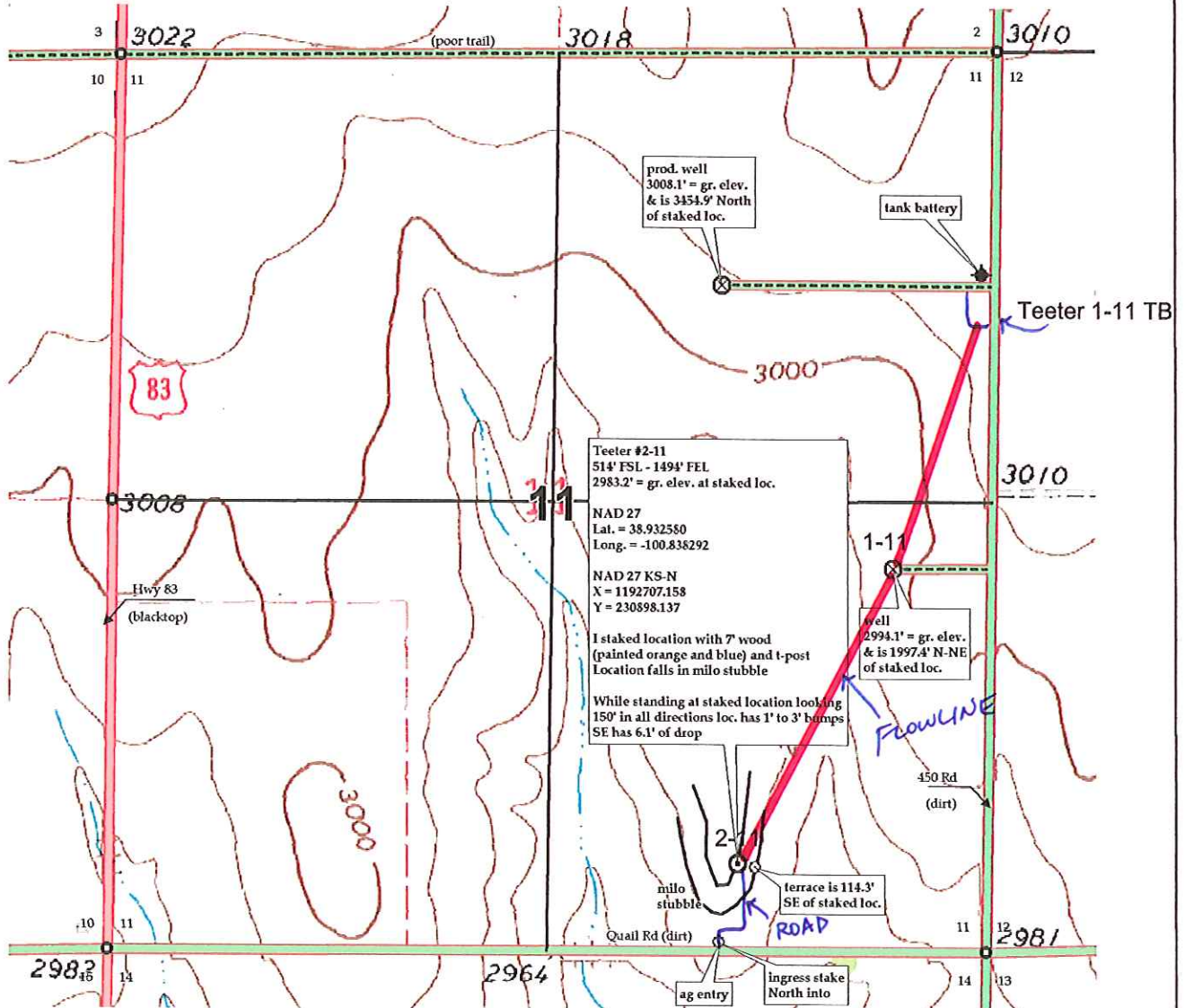
N

GR. ELEVATION: 2983.2'

**Directions:** From South of Oakley, Ks at the intersection of Hwy 40 & Hwy 83 South – Now go 13 miles South on Hwy 83 to SW corner of section 11-13s-32w – Now go 0.7 mile East on Quail Rd to ingress stake North into – Now go 514' North through milo stubble into staked location.

**Final ingress must verified with land owner or Operator.**

*This drawing does not constitute a monumented survey or a land survey plat.  
This drawing is for construction purposes only.*



Preliminary non-binding estimate of flowlines, roads and tanks