

APR 15-16-2011 00-00  
 COMPANY The Bill Bowman Oil Co.  
 Well Pywell #5  
 MATONN, KS.  
 FIELD Matonns

LOCATION 615'ESL E 330' FEL  
 SEC. 36 TWP. 9S RGE. 20W  
 COUNTY Rooks  
 STATE Kansas

PRODUCTION 0/1  
 ELEVATION 2239  
 D.E. 2234  
 O.I. 2234  
 Drilling Record from Kelly Bushing  
 Sample from 3150 to 3150  
 Drilling Time from 3150 to 3150  
 Operator The Bill Bowman Oil Co.  
 Contract No. 9-21-13  
 Date 9-21-13  
 Drilling Company Rook Millases

DATE 8/26/2011  
 TIME 8:22  
 TOTAL DEPTH 3830'  
 FORMATION TOPS AND STRUCTURAL POSITION  
 FORMATION TOPS  
 SURFACE POSITION  
 SURFACE ELEVATION  
 STRUCTURAL POSITION

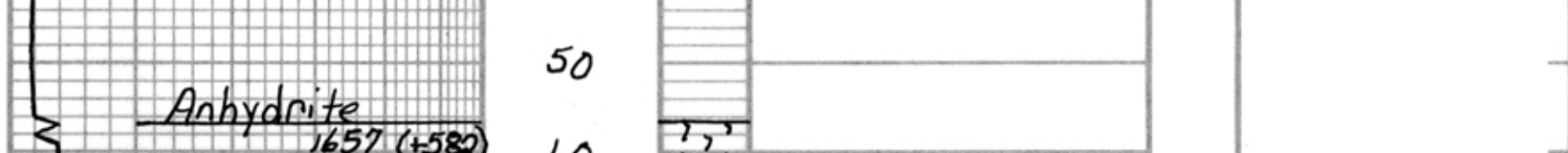
FORMATION TOPS	SURFACE POSITION	SURFACE ELEVATION	STRUCTURAL POSITION
Base/Anhydrite	1657 (+582)	+582	4-4
Tapoka	3282 (-993)	-993	-1
Heebner	3428 (-1199)	-1199	+3
Tonolow	3458 (-1220)	-1220	+3
Lansing	3476 (-1238)	-1238	+3
Base/Kansas City	3691 (-1453)	-1453	+1
Conglomerate	3733 (-1495)	-1495	-1
Arbuckle	3768 (-1529)	-1529	-2
TD	3830		

DATE	TIME	DEPTH	DRILLING TIME	DRILLING RATE	DRILLING COST	DRILLING LOG	DRILLING LOG	DRILLING LOG
9-21-13	8:22	112 1/2'	RR	223'	223'	223'	223'	223'
9-21-13	8:25	112 3/4'	RR	223'	223'	223'	223'	223'
9-21-13	8:27	113'	RR	223'	223'	223'	223'	223'
9-21-13	8:28	113 1/4'	RR	223'	223'	223'	223'	223'
9-21-13	8:29	113 1/2'	RR	223'	223'	223'	223'	223'
9-21-13	8:30	113 3/4'	RR	223'	223'	223'	223'	223'
9-21-13	8:31	114'	RR	223'	223'	223'	223'	223'
9-21-13	8:32	114 1/4'	RR	223'	223'	223'	223'	223'
9-21-13	8:33	114 1/2'	RR	223'	223'	223'	223'	223'
9-21-13	8:34	114 3/4'	RR	223'	223'	223'	223'	223'
9-21-13	8:35	115'	RR	223'	223'	223'	223'	223'

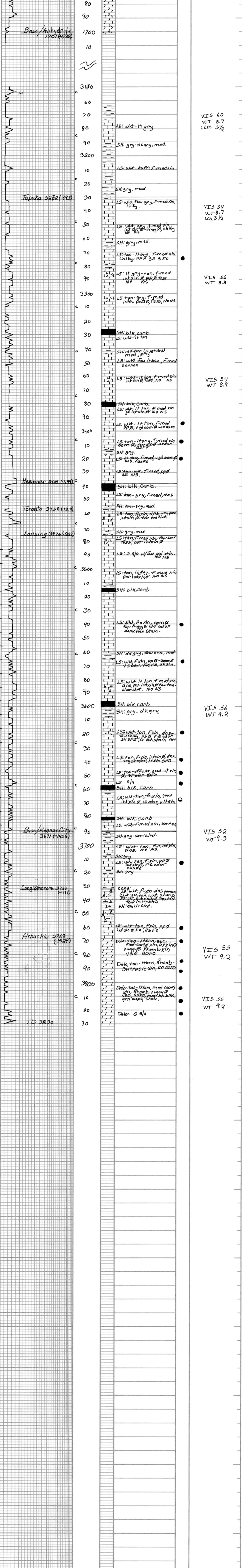
DATE	TIME	DEPTH	DRILLING TIME	DRILLING RATE	DRILLING COST	DRILLING LOG	DRILLING LOG	DRILLING LOG
NONE								

Based on structural position showing high to comparison well, very good oil shows and favorable logs, 5 1/2' production casing was run and cemented in.  
 Ryan Meade

LEGEND



DRILLING TIME IN MINUTES PER FOOT  
 Rate of Penetration Decreases



CONTRACTOR	LOCATION
White Knight Dels, LLC	615'ESL E 330' FEL
Pywell #5	SEC. 36 TWP. 9S RGE. 20W
2239 KB	COUNTY Rooks STATE Kansas