

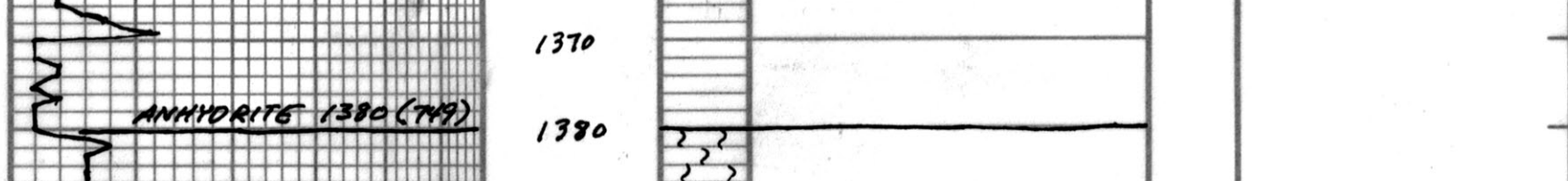
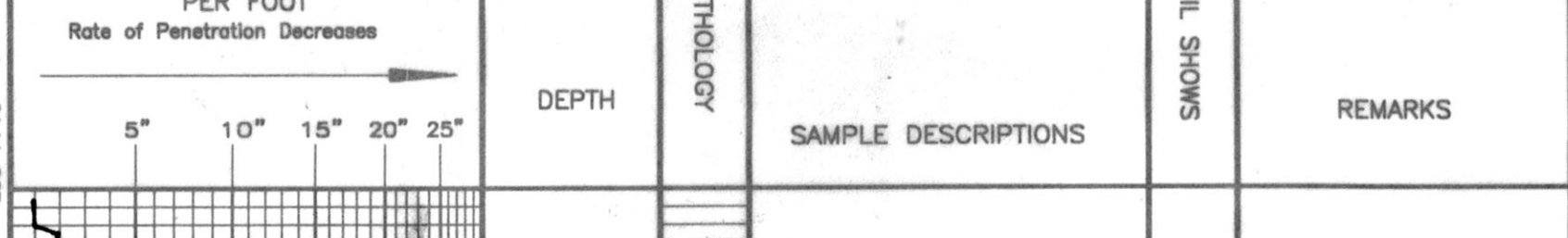
**Operator:** Bill Bower Oil Company  
**Well No.:** #1  
**Field:** Bemis-Shatts  
**Location:** 400' EML & 1675' EML  
**Sec.:** 2 TWP. 12S RGE. 18W  
**County:** Ellis State Kansas  
**Contractor:** Landmark Drilling LLC  
**Company:** Landmark Drilling LLC  
**APR 15-05-1-26594-00-00**  
**Geologist's Report:**  
**Drilling Time and Sample Log**  
**Elevation:** 2129  
**DF:** 2121  
**Measurements:** All  
**From:** Kelly-Bearings  
**Casing Record:**  
**Surface:** 8 5/8" @ 210'  
**150 5/8" OM 372224**  
**Production:** None  
**Electrical Surveys:** None

DATE	DEPTH	NO	TYPE	DEPTH	NO	TYPE	DEPTH	NO	TYPE
9-23-13	5900	1	1/2" NTC	AR	214	214	214	478	
9-24-13	214'	2	7/8" JZ	HMR-20	3692	394	424		
9-25-13	1408'	3	7/8" JZ	HMR-20	3692	394	424		
9-26-13	2011'								
9-27-13	2320'								
9-28-13	2765'								
9-29-13	3309'								
9-30-13	3592'								
10-1-13	3692'								

NO.	START	END	TYPE	REMARKS
3620	22/15	103/15	45/15	
3692	15/60	45/15	60/15	
				1844-75' slightly WNG
				5% wtr 95% mud

DUE TO NEGATIVE DST RESULTS THIS TEST WAS PLUGGED & ABANDONED.

**LEGEND**



DEPTH	LITHOLOGY	REMARKS
1370		
1380		
1390		
1400		
1410		
1420		
1430		
1440		
2990		
60	SH: gry, f, pty.	
70	LS: tan-ft brn, f med xln, inter xln @, NS.	
80	SH: gry, f, med, blk.	
90		
3000		
10		BIT TRIP @ 3012'
20	LS: tan, f med xln, inter xln @, NS.	
30	SH: gry, f, med, pty.	
40	LS: tan-dk brn, med, f med xln, fag, inter xln-brn @, NS.	
50	LS: tan-ft gry, fag, f med xln, fag, inter xln-brn @, NS.	
60	SH: gry, med, blk.	VIS 77 WT 9.0 LCM 2#
70		
80		
90		
3100		
10	SH: gry, f, med, pty.	
20	LS: tan-ft brn, f med xln, inter xln @, NS.	
30	LS: tan-ft gry, fag, inter xln-brn @, NS.	
40	LS: tan-ft gry, f med xln, fag, inter xln-brn @, NS.	VIS 87.9 WT 9.2
50	SH: gry-dk gry, med blk.	
60	LS: tan-ft brn-gry, med, f med xln, inter xln @, NS.	VIS 87.8 WT 8.8
70	LS: tan-ft gry, f med xln, med, inter xln @, NS.	
80	SH: gry	
90	LS: tan-ft gry, f med xln, med, inter xln @, NS.	VIS 55 WT 8.9
3300		
10	SH: gry, med, pty-blk.	
20	LS: tan-ft gry, f med xln, med, inter xln @, NS.	
30	LS: tan-ft gry, f med xln, med, inter xln @, NS.	
40	SH: lt gry-dk gry, med, blk.	
50	SH: blk, carb.	
60	SH: gry-dk gry, med, blk.	
70	LS: tan, f-med xln, med, f med xln, med, inter xln @, NS.	
80	LS: tan-ft gry, f med xln, med, inter xln @, NS.	
90	SH: gry	
3200		
10	LS: tan-ft gry, f med xln, med, inter xln @, NS.	
20	LS: tan-ft gry, f med xln, med, inter xln @, NS.	
30	SH: gry-dk gry, med blk.	
40	SH: blk, carb, blk.	
50	SH: gry-dk gry, med blk.	
60	LS: tan-ft tan, f med xln, med, inter xln @, NS.	VIS 60 WT 9.1 LCM 1 1/2 #
70	SH: gry, med, blk.	
80	LS: tan-ft tan, f med xln, med, inter xln @, NS.	
90	SH: gry, med, blk.	
3400		
10	SH: gry, vari clod.	
20	LS: tan, f med xln, med, inter xln @, NS.	
30	SH: gry	
40	LS: tan-ft gry, f med xln, med, inter xln @, NS.	VIS 59 WT 9.2 LCM 2 #
50	SH: gry-dk gry, med blk.	
60	LS: tan, f med xln, med, inter xln @, NS.	
70	SH: gry	
80	LS: tan, f med xln, med, inter xln @, NS.	
90	LS: tan, f med xln, med, inter xln @, NS.	
3500		
10	SH: vari clod, med, blk.	
20	LS: tan, f med xln, med, inter xln @, NS.	
30	SH: vari clod, med, blk.	
40	LS: tan, f med xln, med, inter xln @, NS.	
50	LS: tan, f med xln, med, inter xln @, NS.	
60	SH: vari clod, med, blk.	
70	LS: tan, f med xln, med, inter xln @, NS.	
80	SH: blk, carb.	
90	SH: gry-dk gry, med blk.	
3600		
10	SH: blk, carb.	
20	LS: tan, f-med xln, med, inter xln @, NS.	
30	SH: vari clod	
40	LS: tan, f-med xln, med, inter xln @, NS.	
50	SH: vari clod	
60	SH: vari clod	
70	SH: vari clod	
80	SH: vari clod	
90	SH: vari clod	
3700		

VIS 55 WT 9.3  
 DST #1  
 3620-3692  
 15-60-45-60  
 SIP 1133-NA  
 FP 22-45  
 REC 75' Wtr Mud  
 5% wtr  
 95% mud