



**TRILOBITE
TESTING, INC.**

DRILL STEM TEST REPORT

Running Foxes Petroleum, Inc.

10-1-15 Brown, KS

6855 S Havana St., Ste. 400
Centennial, CO 80112

Roush 11-10

Job Ticket: 50818

DST#: 1

ATTN: Chad Counts

Test Start: 2013.07.30 @ 14:52:00

GENERAL INFORMATION:

Formation: **Hunton**

Deviated: No Whipstock: ft (KB)

Time Tool Opened: 16:47:30

Time Test Ended: 21:17:00

Test Type: Conventional Bottom Hole (Initial)

Tester: Brannan L

Unit No: 59

Interval: 2655.00 ft (KB) To 2664.00 ft (KB) (TVD)

Reference Elevations: 1149.00 ft (KB)

Total Depth: 2664.00 ft (KB) (TVD)

1140.00 ft (CF)

Hole Diameter: 7.88 inches Hole Condition: Fair

KB to GR/CF: 9.00 ft

Serial #: 6753 Outside

Press @ Run Depth: 19.38 psig @ 2661.00 ft (KB)

Capacity: 8000.00 psig

Start Date: 2013.07.30

End Date:

2013.07.30

Last Calib.:

2013.07.30

Start Time: 14:52:05

End Time:

21:16:59

Time On Btm:

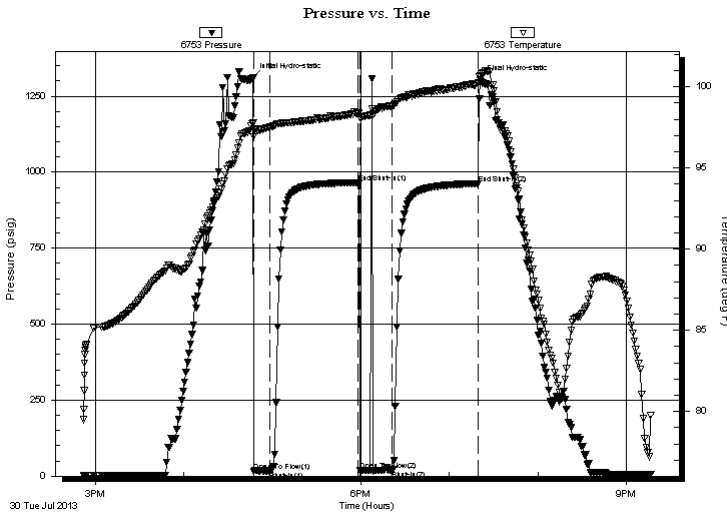
2013.07.30 @ 16:47:00

Time Off Btm:

2013.07.30 @ 19:21:00

TEST COMMENT: 10- IF- Very weak surface blow
60- IS- No blow
20- FF- No blow flushed tool no blow
60- FS- No blow

PRESSURE SUMMARY



Time (Min.)	Pressure (psig)	Temp (deg F)	Annotation
0	1312.06	97.76	Initial Hydro-static
1	16.42	96.92	Open To Flow (1)
12	16.93	97.54	Shut-In(1)
71	966.01	98.38	End Shut-In(1)
73	17.56	98.08	Open To Flow (2)
94	19.38	98.83	Shut-In(2)
153	962.53	100.22	End Shut-In(2)
154	1303.30	100.67	Final Hydro-static

Recovery

Length (ft)	Description	Volume (bbl)
5.00	OSM	0.02

Gas Rates

Choke (inches)	Pressure (psig)	Gas Rate (Mcf/d)



**TRILOBITE
TESTING, INC.**

DRILL STEM TEST REPORT

FLUID SUMMARY

Running Foxes Petroleum, Inc.

10-1-15 Brown, KS

6855 S Havana St., Ste. 400
Centennial, CO 80112

Roush 11-10

Job Ticket: 50818

DST#: 1

ATTN: Chad Counts

Test Start: 2013.07.30 @ 14:52:00

Mud and Cushion Information

Mud Type: Gel Chem

Cushion Type:

Oil API:

deg API

Mud Weight: 93.00 lb/gal

Cushion Length:

ft

Water Salinity:

ppm

Viscosity: 56.00 sec/qt

Cushion Volume:

bbbl

Water Loss: 7.99 in³

Gas Cushion Type:

Resistivity: ohm.m

Gas Cushion Pressure:

psig

Salinity: 700.00 ppm

Filter Cake: inches

Recovery Information

Recovery Table

Length ft	Description	Volume bbl
5.00	OSM	0.025

Total Length: 5.00 ft Total Volume: 0.025 bbl

Num Fluid Samples: 0

Num Gas Bombs: 0

Serial #:

Laboratory Name:

Laboratory Location:

Recovery Comments:

Pressure vs. Time

