

COMPANY H+C Oil Operating, Inc.

WELL B-11:ps #19-1

FIELD W-1:sdcat

LOCATION 12S1 RCL + 17S1 FEL

SEC. 19 TWP. 4S RGE. 21W

COUNTY Graham

STATE Kansas

OPERATOR H+C Oil Operating, Inc.

CONTRACTOR American Earth, Rig #3

CONM. D-29-13 COMP. 11-5-13

CASING RECORD

SURF: 48" @ 222' PROD: None

TOTAL DEPTH DRILLERS: 3745'
TOTAL DEPTH LOG: 3742'

PRODUCTION D+A

ELEVATION KB 2135
DF 2130
GI 2130

Drilling Measured From: KB
Samples Saved From: 3100 to: TD
Drilling Time From: 3000 to: TD
Samples Examined From: 3100 to: TD

Geological Supervision from
Medicine Geologist: Marc Downing
Electrician: Flower

DIT
MEL
CML/COL

FORMATION	SAMPLE NO.	ELECTRIC LOG	SUB-SEA POSITION	STRUCTURAL POSITION
Top Anhydrite	1746	1791	+444	+3
Base Anhydrite	1743	1722	+413	NA
Tapeka	3105	3101	-964	+9
Heebner	3320	3318	-1193	+8
Toronto	3343	3341	-1204	+8
LKC	3359	3358	-1221	+9
BKC	3565	3564	-1225	+1
Arbuckle	3718	3716	-1575	-22

REFERENCE WELL FOR STRUCTURE N-B Car. Inc.
Donal/Irbg #1 SA-Sur-AE Sec. 19-8-21W

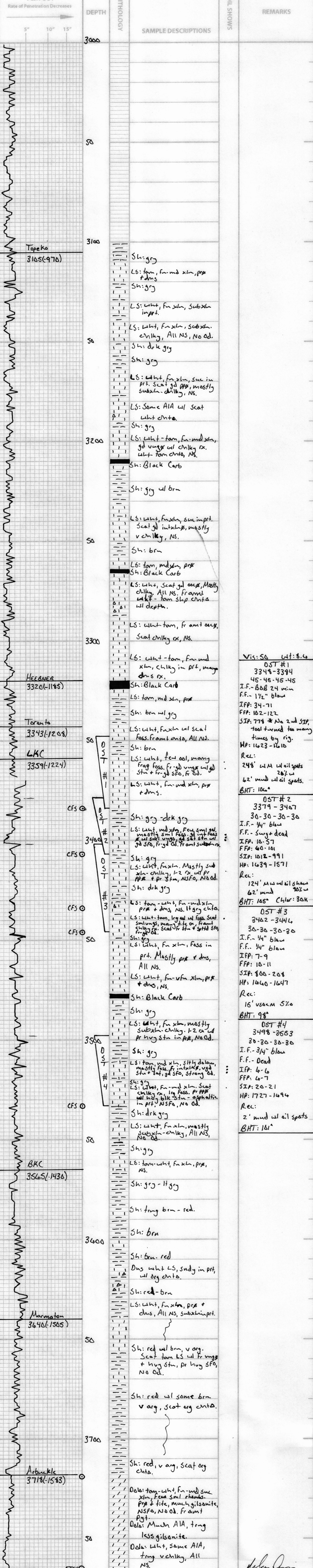
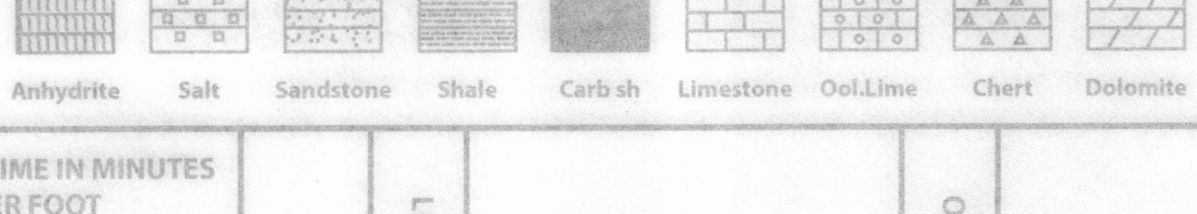
DRILL STEM TESTS

No.	Interval	IFP/Time	ISIP/Time	FFP/Time	FSIP/Time	HP/FP	RECOVERY

REMARKS AND RECOMMENDATIONS
Due to DST recovery + log evaluation, it was decided to plug + abandon the well.

Marc Downing

LEGEND



Marc Downing

RTD: 3765(1630)
LTD: 3762(1627)