



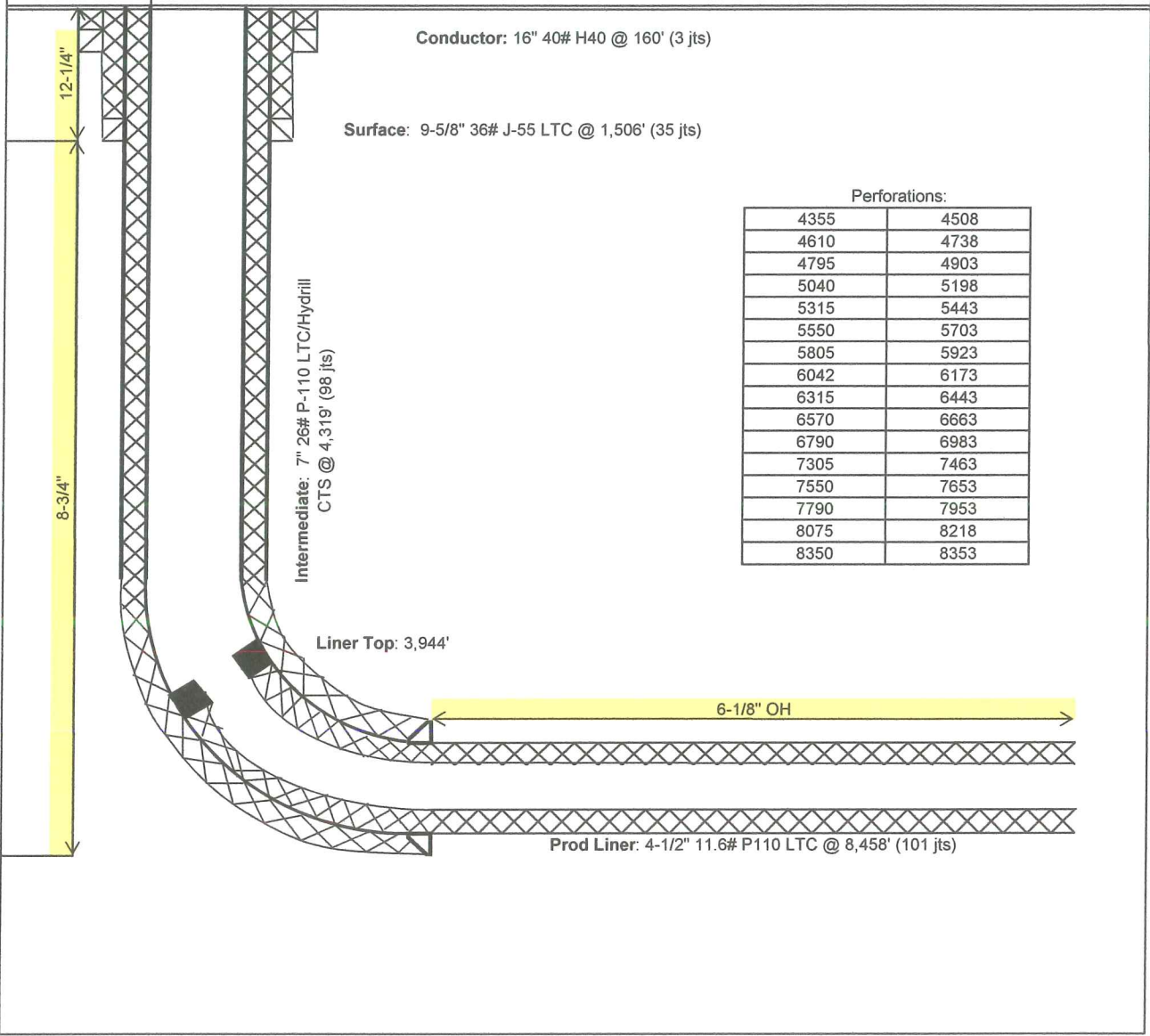
# Unit Petroleum Company

Date of Last Revision:  
22-Oct-13

Well: Loudenback 18 #1H  
Location: 18-25S-10W  
County, State: Reno County, KS  
Surface Location: 150' FNL & 850' FEL

API No.: 1515521661  
Rig: Unit Drilling #331  
Engineer: Brent Keys (918) 477-4510  
Geology: Rob Wilson (928) 477-5728

### OH Size



### Perforations:

4355	4508
4610	4738
4795	4903
5040	5198
5315	5443
5550	5703
5805	5923
6042	6173
6315	6443
6570	6663
6790	6983
7305	7463
7550	7653
7790	7953
8075	8218
8350	8353