

Customer <i>UNIT-ROTOR</i>	Lease No.	Date <i>08-26-13</i>	
Lease <i>LODGENBACK</i>	Well # <i>18-1-4</i>		
Field Order # <i>8109</i>	Station <i>AAA 71 AS</i>	Casing <i>4 1/2</i>	Depth <i>8458</i>
Type Job <i>CDW 4 1/2 Linder</i>	Formation	County <i>RENO</i>	State <i>KS</i>
		Legal Description <i>18-25-10</i>	

PIPE DATA		PERFORATING DATA		FLUID USED		TREATMENT RESUME		
Casing Size	Tubing Size	Shots/Ft		Acid	RATE	PRESS	ISIP	
<i>4 1/2</i>	<i>2.6</i>	<i>1917</i>						
Depth <i>4513</i>	Depth <i>0.0</i>	From <i>644'</i>	To	Pre Pad	Max			5 Min.
Volume <i>95-71</i>	Volume <i>HD</i>	From <i>383</i>	To	Pad	Min			10 Min.
Max Press	Max Press	From	To	Frac	Avg			15 Min.
Well Connection	Annulus Vol.	From	To		HHP Used			Annulus Pressure
Plug Depth <i>8458</i>	Packer Depth	From	To	Flush	Gas Volume			Total Load

Customer Representative	Station Manager <i>DAVE SOCH</i>	Treater <i>Robert Sullivan</i>
-------------------------	-------------------------------------	-----------------------------------

Service Units	<i>22900</i>	<i>23708</i>	<i>20920</i>	<i>19903</i>	<i>73768</i>	<i>19824</i>	<i>17860</i>				
Driver Names	<i>Calvin</i>	<i>McKraw</i>	<i>Phyllis</i>		<i>MURKIN</i>						

Time	Casing Pressure	Tubing Pressure	Bbbs. Pumped	Rate	Service Log
<i>0630</i>	<i>Am</i>				<i>on loc softy meeting</i>
					<i>Run liner 4 1/2 11.6 cgs. 4513 TO. 8458'</i>
					<i>O.P. 1917' DRILL C. 644' HD. 1383' str 49'</i>
<i>1120</i>					<i>CASING ON BOTTOM</i>
<i>1130</i>					<i>Hook up on 4 1/2</i>
<i>1150</i>	<i>5300</i>				<i>TBT LIND</i>
					<i>Release Ps. Drop BALL</i>
<i>1152</i>	<i>200</i>			<i>3.5</i>	<i>At Pump in BALL down</i>
	<i>800</i>		<i>94</i>		
<i>12:25</i>	<i>1800</i>				<i>At shoe</i>
					<i>Release Ps.</i>
<i>1235</i>	<i>1800</i>				<i>Ps. back</i>
	<i>2400</i>		<i>6</i>	<i>2</i>	<i>Pump BALL OUT</i>
					<i>shut down</i>
<i>12:40</i>			<i>12</i>	<i>3</i>	<i>At Pump in flush</i>
	<i>200</i>			<i>5.5</i>	<i>At mix cont 550 st Pressure cont 1800 543</i>
<i>1:12</i>			<i>120</i>		<i>quid 1.24 mix 15.6 ppq. = 12000 cont</i>
<i>1:15</i>	<i>500</i>			<i>5</i>	<i>cont mix shut down wash pump-liner</i>
			<i>80</i>	<i>3</i>	<i>At Dip</i>
<i>1:40</i>	<i>2000</i>		<i>92</i>		<i>slow rate</i>
					<i>plug down</i>

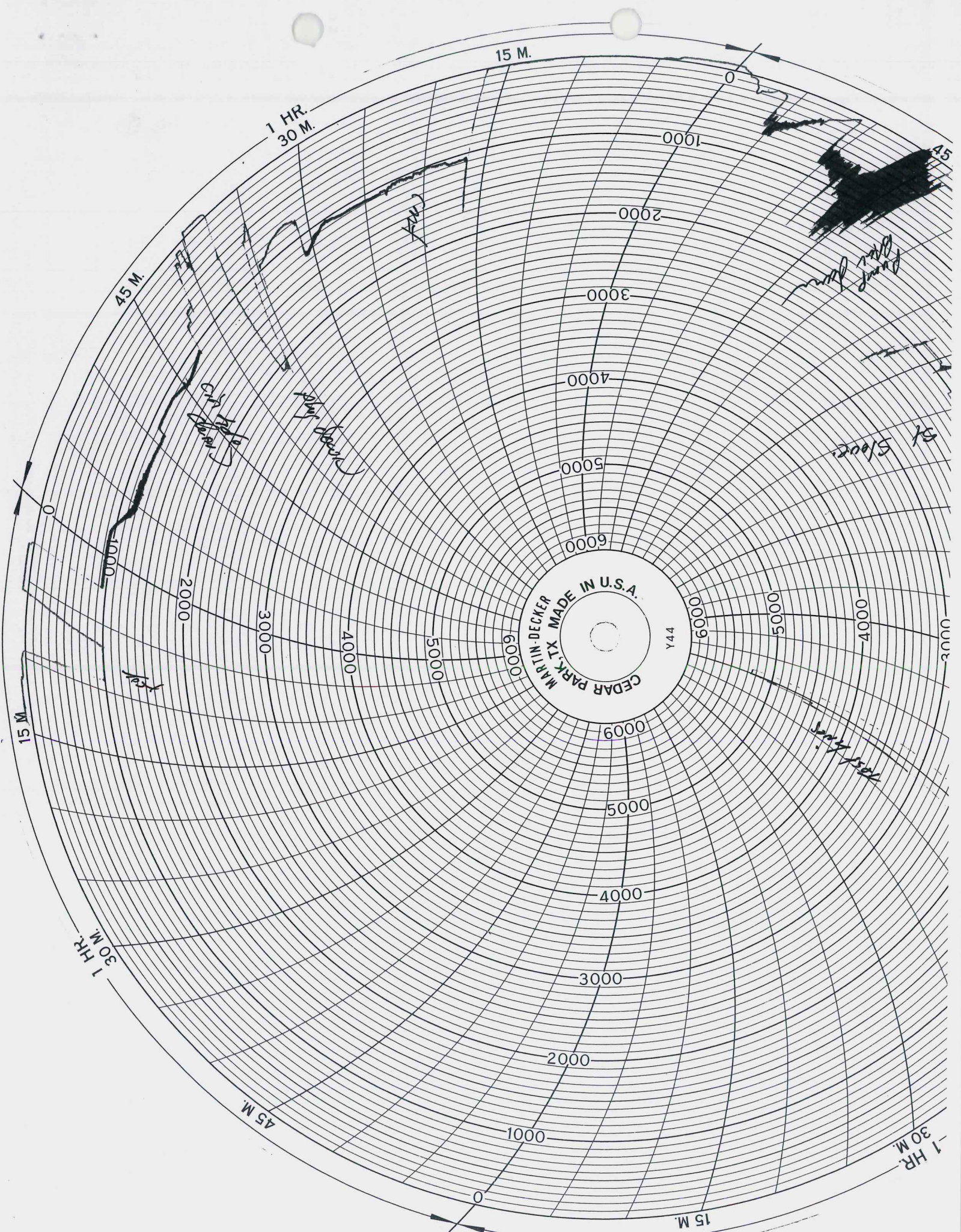
Customer <i>UNIT</i>		Lease No.		Date	
Lease <i>Londonbade</i>		Well # <i>18-117</i>		Date <i>08-26-13</i>	
Field Order # <i>8707</i>	Station	Casing	Depth	County <i>Reed</i>	State <i>KS</i>
Type Job <i>CDW 4 1/2 Lumen</i>			Formation	Legal Description <i>18-25-10</i>	

PIPE DATA		PERFORATING DATA		FLUID USED		TREATMENT RESUME		
Casing Size	Tubing Size	Shots/Ft		Acid	RATE	PRESS	ISIP	
Depth	Depth	From	To	Pre Pad	Max		5 Min.	
Volume	Volume	From	To	Pad	Min		10 Min.	
Max Press	Max Press	From	To	Frac	Avg		15 Min.	
Well Connection	Annulus Vol.	From	To		HHP Used		Annulus Pressure	
Plug Depth	Packer Depth	From	To	Flush	Gas Volume		Total Load	

Customer Representative	Station Manager <i>DAVE SCOTT</i>	Treater <i>Robert [Signature]</i>
-------------------------	-----------------------------------	-----------------------------------

Service Units									
Driver Names									

Time	Casing Pressure	Tubing Pressure	Bbls. Pumped	Rate	Service Log
<i>1:45</i>	<i>700</i>			<i>4</i>	<i>in 4/2 clean</i>
<i>2:06</i>			<i>130</i>		<i>Shut down</i>
<i>2:08</i>	<i>1,000</i>				<i>35 BBL out back to P-1</i>
<i>3:05</i>					<i>Test</i>
					<i>Release Ps.</i>
					<i>50B Gandy c</i>
					<i>Thank you</i>



Customer <i>UNIT Petroleum</i>	Lease No.	Date <i>08-12-13</i>	
Lease <i>Louderback</i>	Well # <i>18-14</i>		
Field Order # <i>8707</i>	Station <i>Pratt KS</i>	Casing <i>9 5/8</i>	Depth <i>1506</i>
Type Job <i>ENW 2 7/8 bitline</i>	Formation	Cour. <i>RENO</i>	State <i>KS</i>
		Legal Description <i>18-25-10</i>	

PIPE DATA		PERFORATING DATA		FLUID USED	TREATMENT RESUME		
Casing Size	Tubing Size	Shots/Ft		Acid	RATE	PRESS	ISIP
<i>9 5/8</i>							
Depth <i>1506'</i>	Depth	From	To	Pre Pad	Max		5 Min.
Volume <i>116 1/2</i>	Volume	From	To	Pad	Min		10 Min.
Max Press <i>200</i>	Max Press	From	To	Frac	Avg		15 Min.
Well Connection <i>P.C.</i>	Annulus Vol.	From	To		HHP Used		Annulus Pressure
Plug Depth <i>1509'</i>	Packer Depth	From	To	Flush	Gas Volume		Total Load

Customer Representative	Station Manager <i>DAVE COY</i>	Treater <i>Robert Williams</i>
Service Units <i>37900 19889 19843 70959 19918 19960 70010</i>		
Driver Names <i>Soltis Edamo Phin Lannace</i>		

Time	Casing Pressure	Tubing Pressure	Bbls. Pumped	Rate	Service Log
<i>6:30</i>	<i>psi</i>				<i>in loc</i>
					<i>Truck on loc Soltis met</i>
					<i>Run 9 5/8 # 36 csg</i>
<i>9:20</i>					<i>CASING on Bottom</i>
<i>9:30</i>					<i>Hook up circ</i>
<i>10:20</i>	<i>200</i>		<i>3</i>	<i>4.5</i>	<i>14 SPACER</i>
			<i>143</i>	<i>5.5</i>	<i>mix cont 325k Acid cont @ 12.6 app</i>
			<i>60</i>		<i>mix Tail cont 280k cement @ 15.6 app</i>
					<i>cont mix @ shut down</i>
					<i>Release Plug</i>
				<i>5.5</i>	<i>14 Disp</i>
	<i>350</i>		<i>60</i>		<i>1 1/2 PSI</i>
<i>11:30</i>	<i>1,000</i>		<i>116</i>	<i>2.5</i>	<i>plug down</i>
					<i>1 circ 45 min cont test</i>
					<i>503 complete</i>
					<i>Thank you</i>

Customer <i>Unit Petroleum Co.</i>	Lease No.	Date <i>8-17-13</i>	
Lease <i>Lundenback</i>	Well # <i>18#1H</i>		
Field Order # <i>8750</i>	Station <i>Pratt</i>	Casing <i>7"</i>	Depth <i>4320</i>
Type Job <i>CNW 7in INT</i>		County <i>Renov</i>	State <i>KS</i>
Formation		Legal Description <i>18-255-10W</i>	

PIPE DATA		PERFORATING DATA		FLUID USED		TREATMENT RESUME		
Casing Size <i>7"</i>	Tubing Size	Shots/Ft		Acid <i>160 SK, AA-2</i>	RATE <i>5 H</i>	PRESS <i>300</i>	ISIP <i>520</i>	
Depth <i>4320</i>	Depth	From	To	Pre Pad <i>10% salt</i>	Max		5 Min.	
Volume <i>165</i>	Volume	From	To	Pad	Min		10 Min.	
Max Press <i>150</i>	Max Press	From	To	Frac	Avg		15 Min.	
Well Connection <i>P.C.</i>	Annulus Vol.	From	To		HHP Used		Annulus Pressure	
Plug Depth <i>4320</i>	Packer Depth	From	To	Flush	Gas Volume		Total Load	

Customer Representative <i>Brent Keys</i>	Station Manager <i>Kevin Gurdy</i>	Treater <i>Mike Mattai</i>
--	---------------------------------------	-------------------------------

Service Units <i>37900</i>	<i>33709</i>	<i>20920</i>	<i>19821</i>	<i>19862</i>				
Driver Names <i>MATTAI</i>	<i>Mel Horn</i>		<i>Pierison</i>	<i>Phye</i>				

Time	Casing Pressure	Tubing Pressure	Bbls. Pumped	Rate	Service Log
11:00					Trucks at location / safety meeting
1:10					Pipe on bottom
1:50					Hook up to casing
1:58	150		5	5	Pump 5 Bbl H ₂ O
1:59	150		12	5	Pump 12 Bbl mud flush
2:02	150		3	5	Pump 3 Bbl H ₂ O
2:03	300		40	6	Mix 160 SKS OR AA-2 cmf
2:10					release plug
2:15	50			6	start displacement
2:45	350		150	3	slow rate
2:51	550		167		plug did not land @ 165 Bbls STOPPED PUMPING @ 167 Bbls per customer
2:51 PM					release pressure
					Circulation thru job
					JOB complete
					THANK YOU
					MIKE MATTAI

Mid-Continent Conductor, LLC

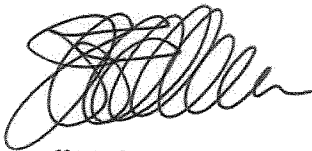
P.O. Box 1570, Woodward, OK 73802

Ph. 580-254-5400 Fax 580-254-3242

CEMENTING REPORT

Operator: Unit Corporation
Well Name: Loudenback 18-1H
Legal Description: Reno Cnty, KS

Cement Casing Data	
Cementing Date	6-20-13
Size of Drill Bit (Inches)	28
Size of Casing (Inches O.D.)	16
Setting Depth of Casing (ft.) from ground level	145
Type of Cement	Common Cement
Sacks of Cement Used	120
Was cement circulated?	Yes
Job witnessed by: Sonny Lauer	



Jeff M. Owen

Mid-Continent Conductor, LLC