



Pioneer Energy Services

Sonic Cement
Bond Log

API No.

Company WPX Energy

Well Schepmann No.1-21 SWD

Field

County Pratt

State Kansas

Location

Other Services
Gauge Ring
Junk basket

Sec: 21 Twp: 26S Rge: 12W

Elevation

Permanent Datum Ground Level Elevation
Log Measured From Kelly Bushing 10 Ft. Above Perm. Datum
Drilling Measured From Kelly Bushing

K.B.
D.F.
G.L.

Run Number One

Date Survey 10/21/2013

Date Cementing N/A

Type Cementing Operation Primary

Depth Driller 5300

Depth Logger 4400

Logged Interval 4400 to 1500

Casing Driller 7 @ 4458 @

Float Collar -- D.V. Tool // // //

Squeeze Depth // // //

Amount & Type Cement // // //

Amount & Type Admix // // //

Type Fluid In Hole Water

Fluid Level 750

Salinity PPM CL // // //

Weight lb/gal -- Vis. // // //

Approx. Logged Cement Top 1710

Calculated Cement Top // // //

Max. Hole Temperature 120

Tool No. RBT1-1

Spacing Recorded 3-5

Equipment -- Location 106 Pratt

Recorded By S. Chesney

Witnessed By Bobby Ward

<<< Fold Here >>>

All interpretations are opinions based on inferences from electrical or other measurements and we cannot and do not guarantee the accuracy or correctness of any interpretation, and we shall not, except in the case of gross or willful negligence on our part, be liable or responsible for any loss, costs, damages, or expenses incurred or sustained by anyone resulting from any interpretation made by any of our officers, agents or employees. These interpretations are also subject to our general terms and conditions set out in our current Price Schedule.

Comments

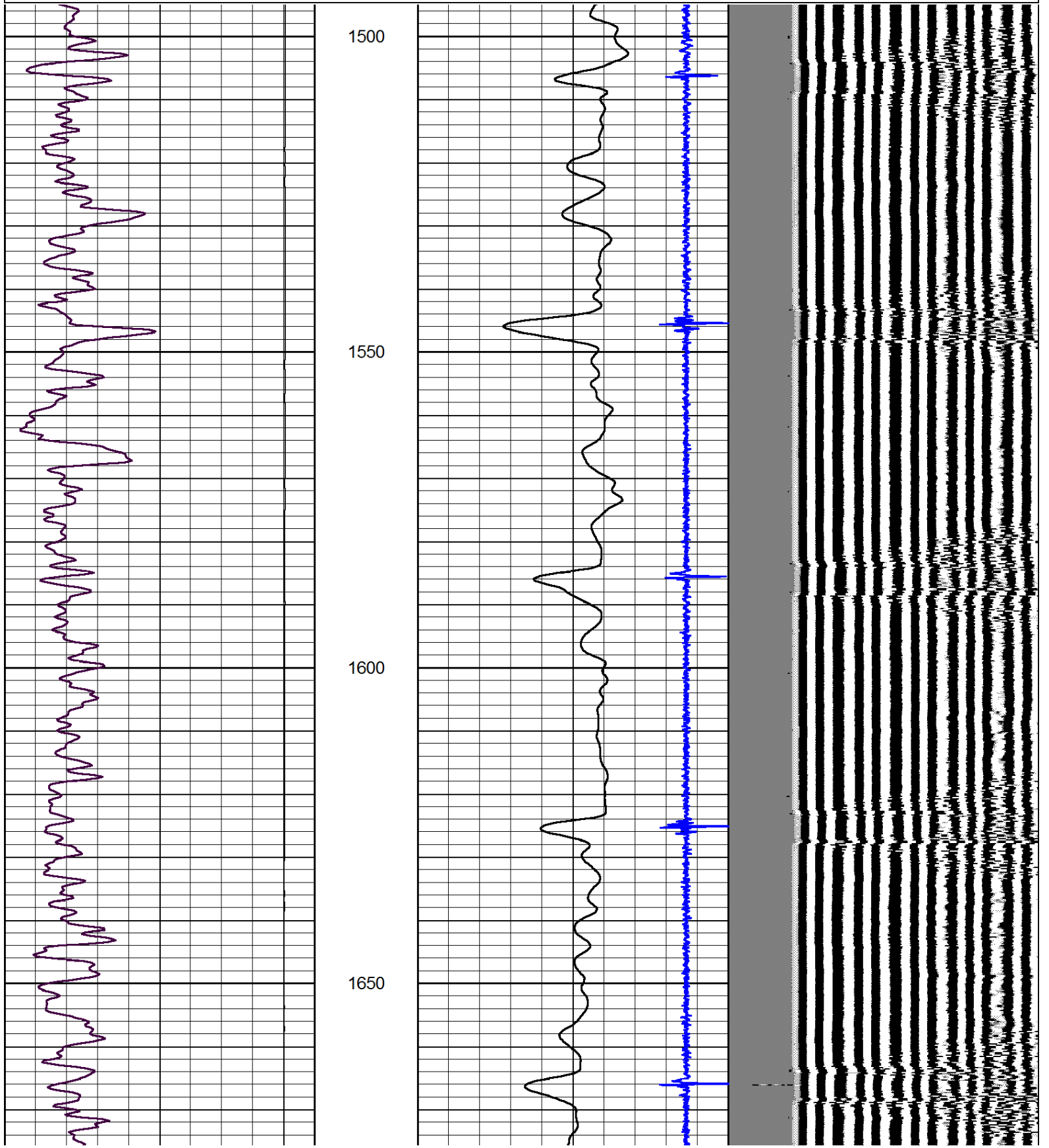
Thank you for using Pioneer Energy Services
(620) 672-8300

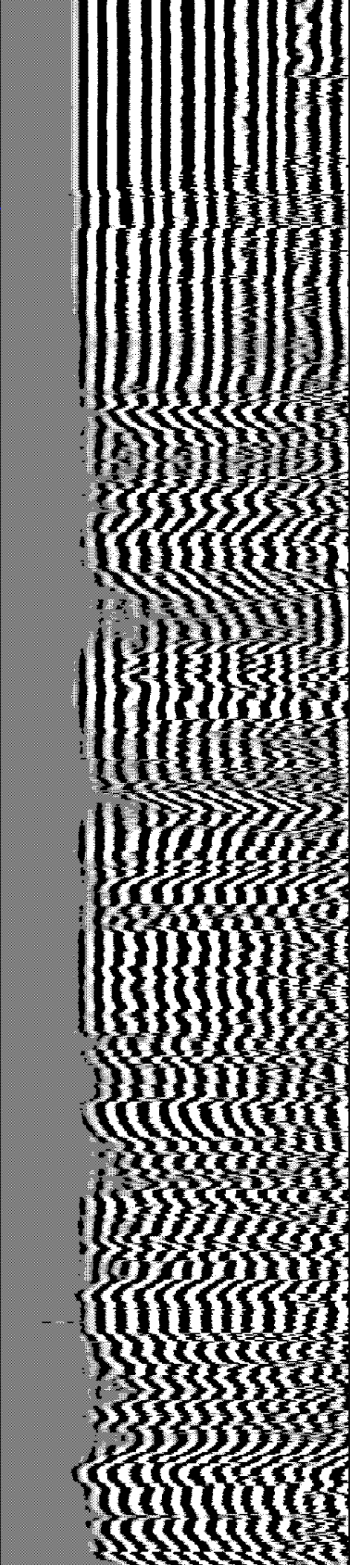
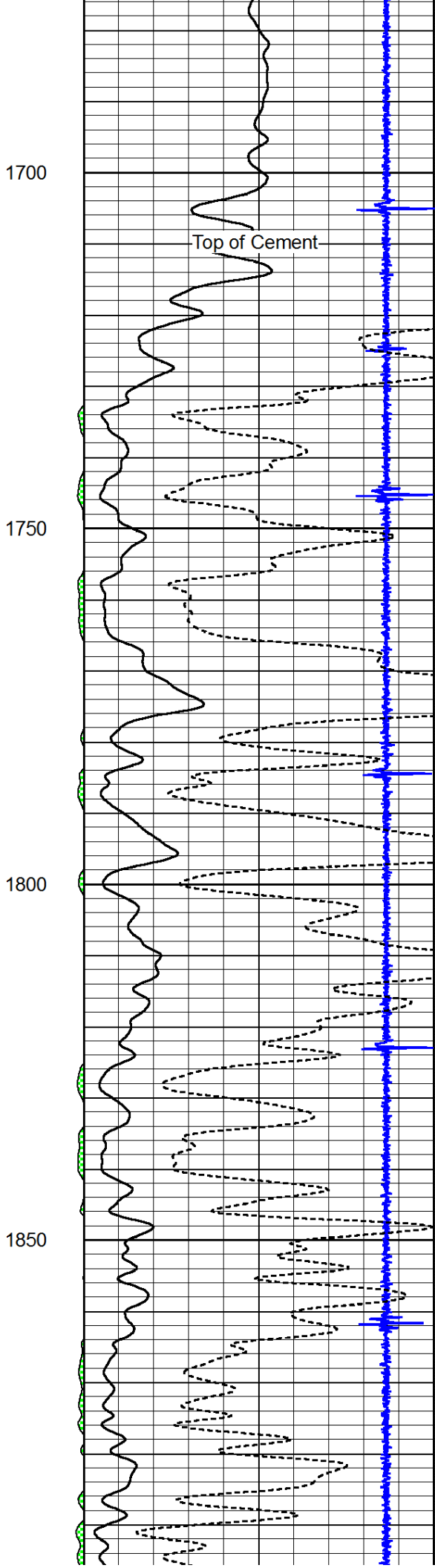
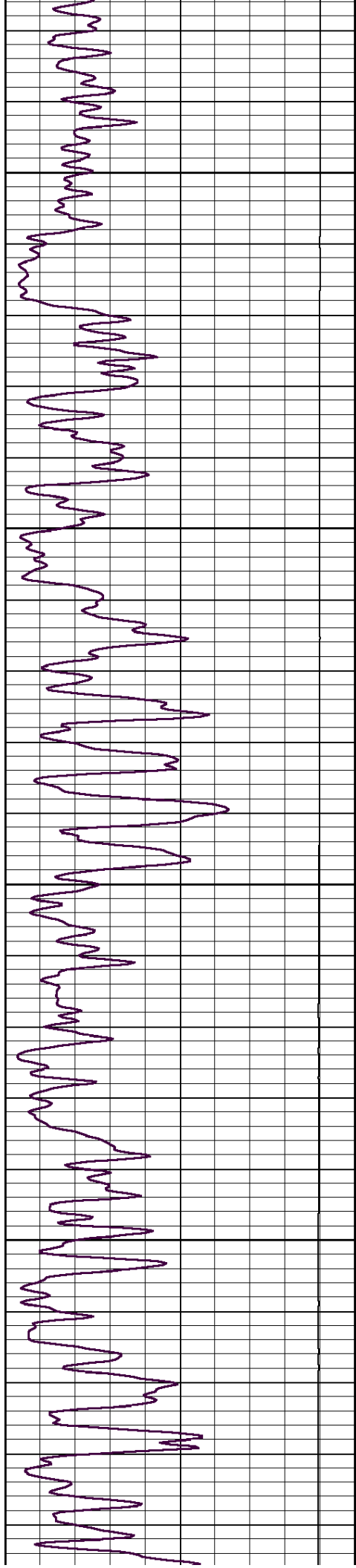


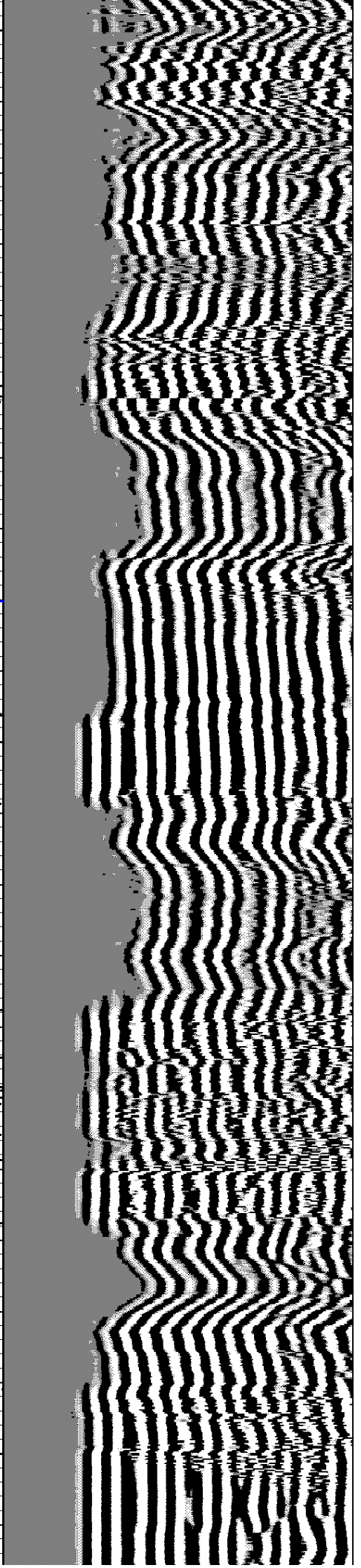
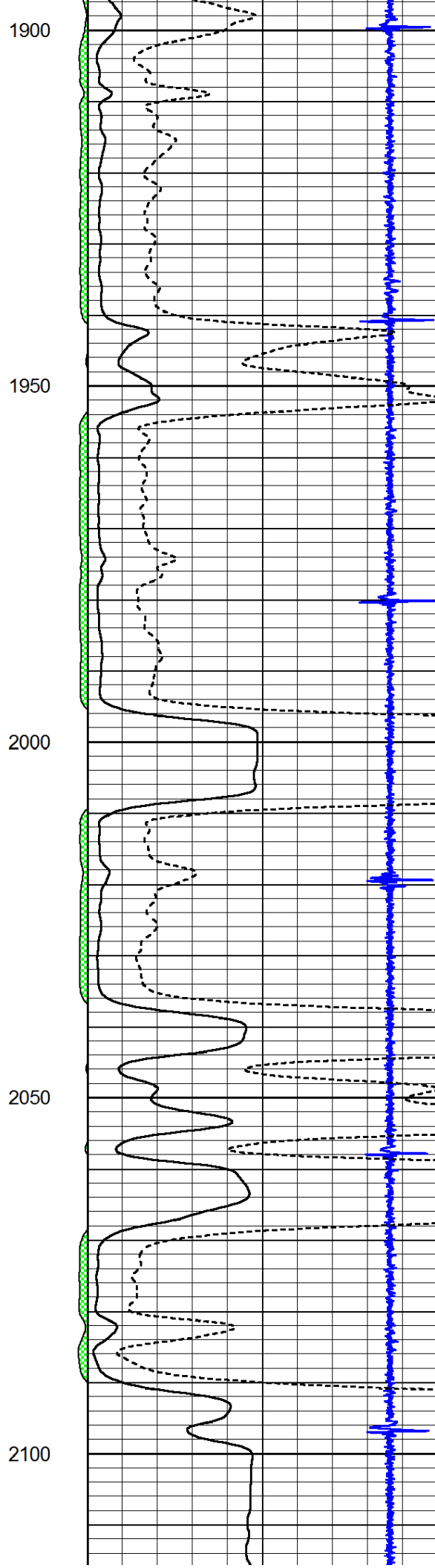
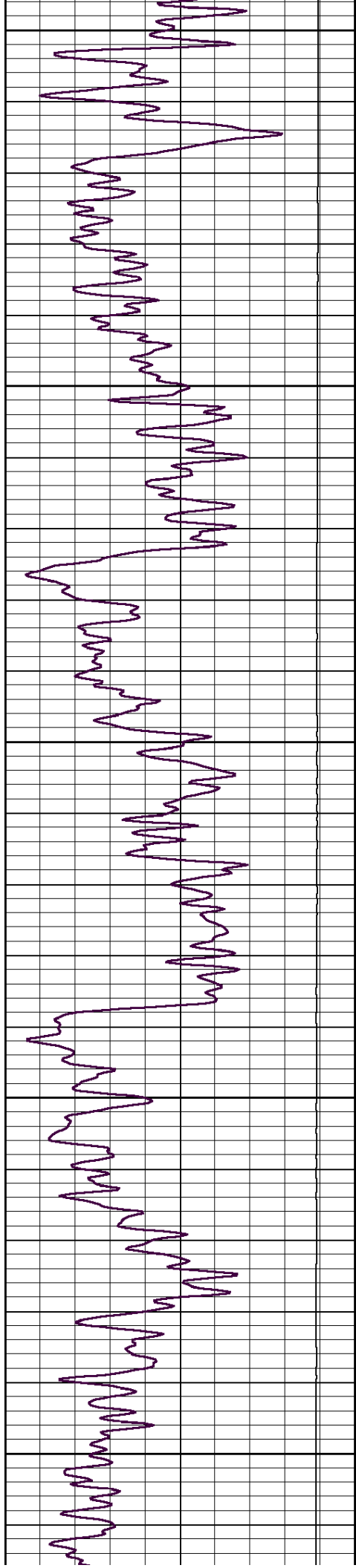
Main Pass

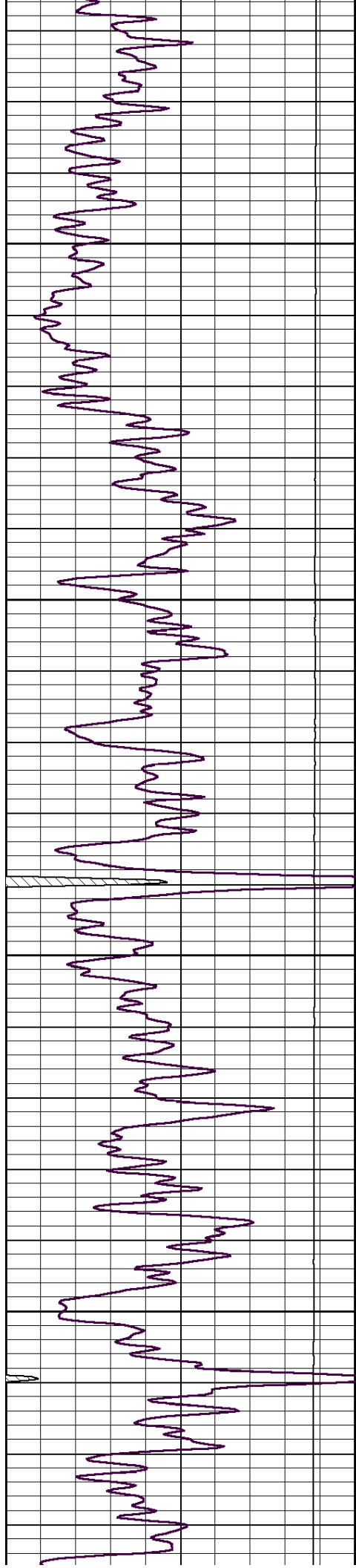
Database File: wpx-schepmann-1-21-swd.db
Dataset Pathname: grcbl/pass11
Presentation Format: cbldr
Dataset Creation: Mon Oct 21 11:57:46 2013 by Log SCH 111116
Charted by: Depth in Feet scaled 1:240

| | | | | | | | | | |
|---|-----------|-----|--------|----|--------------------------|-----|-----|--------|------|
| 0 | Gamma Ray | 150 | amp3ft | 32 | Casing Collars | -5 | 200 | wvf5ft | 1200 |
| | | | (mV) | 0 | Amplified Amplitude (mV) | 100 | | | |
| | | | -100 | 10 | Pipe Amplitude (mV) | 20 | | | |







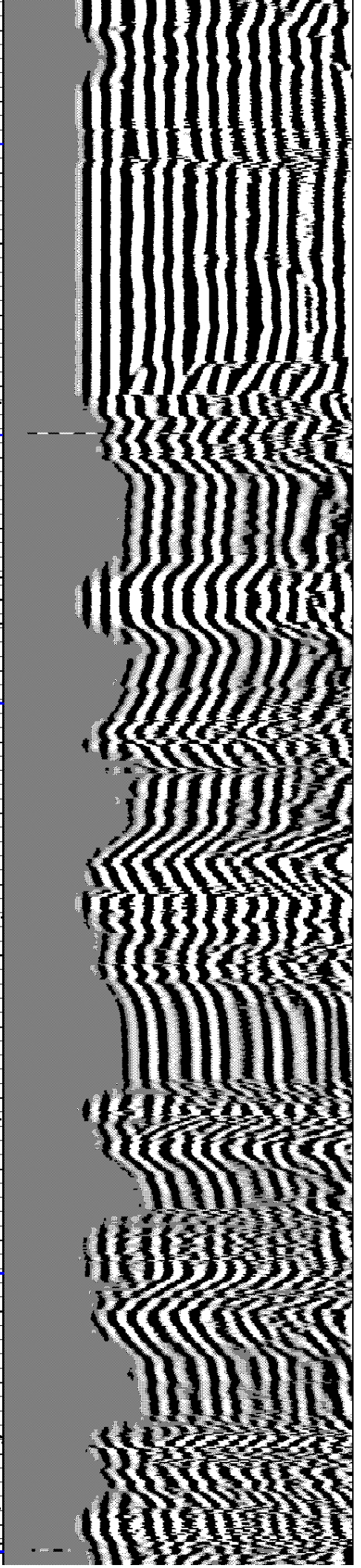
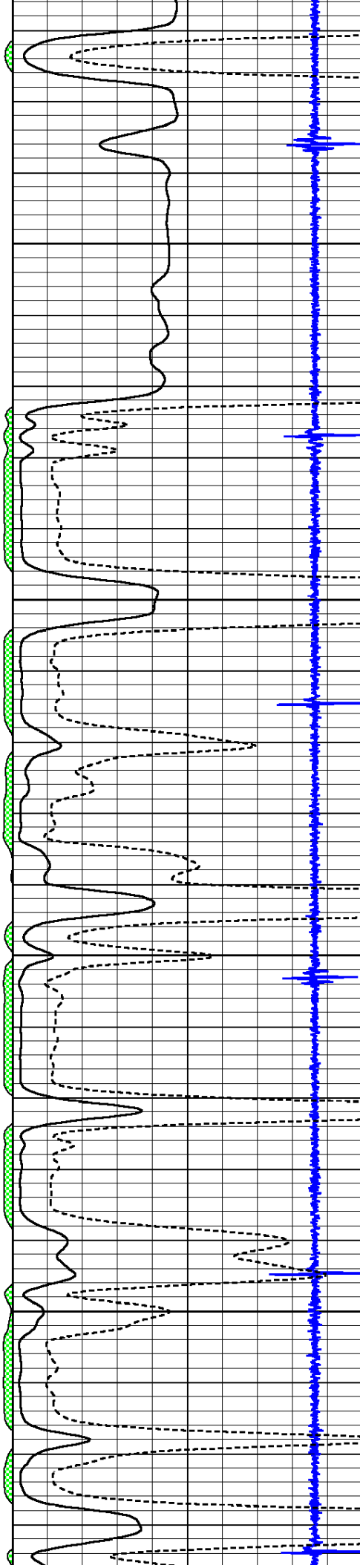


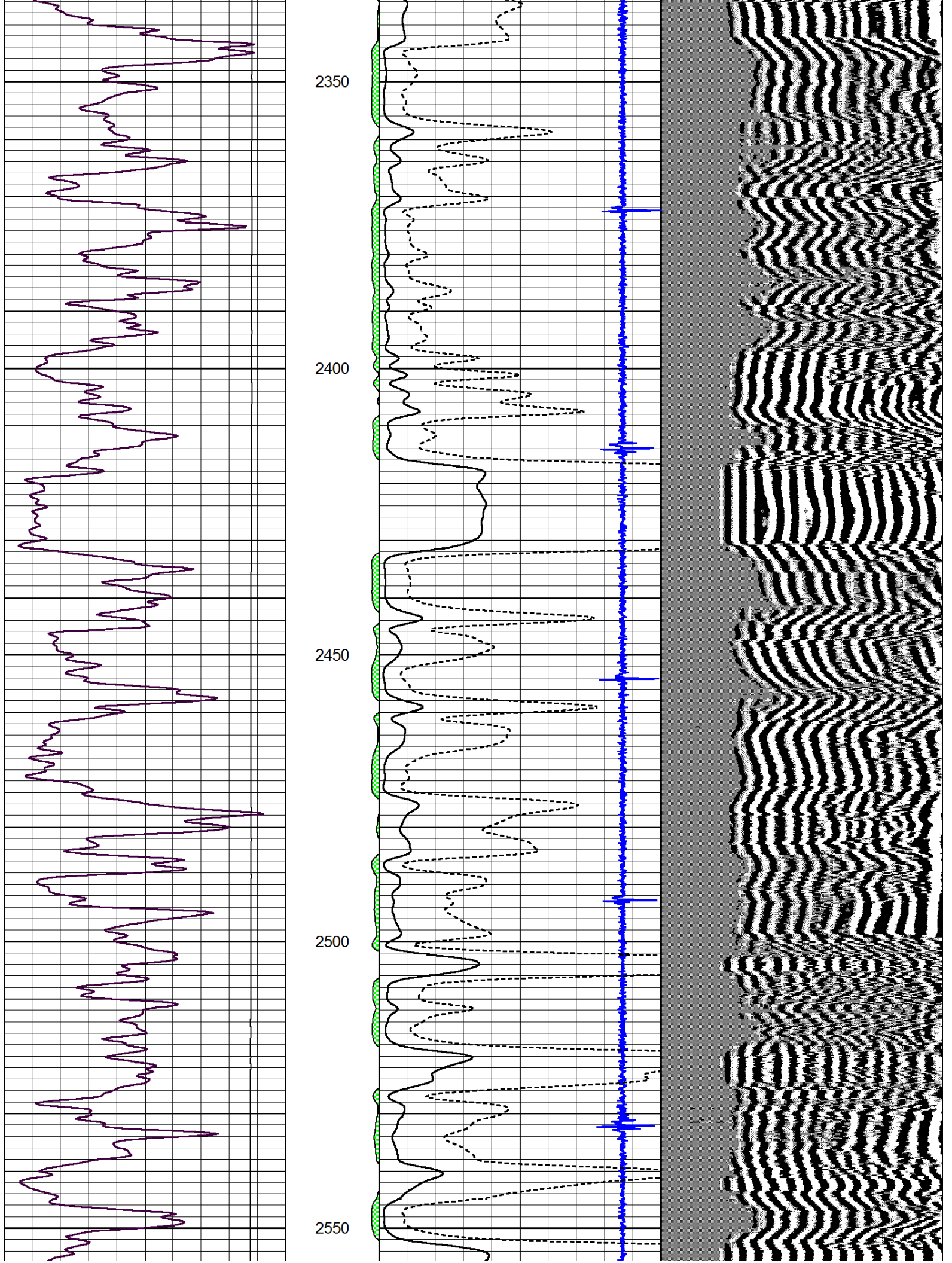
2150

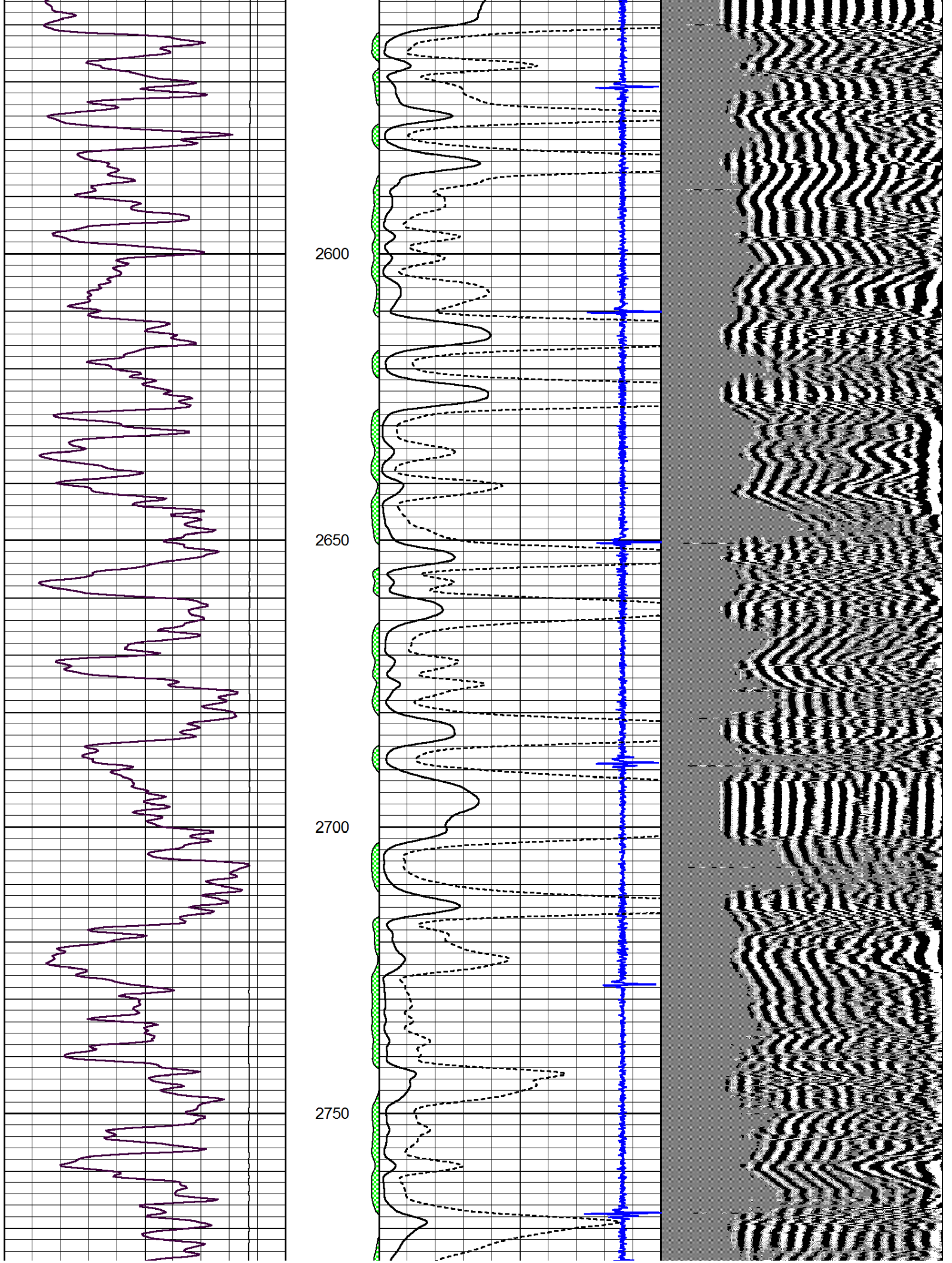
2200

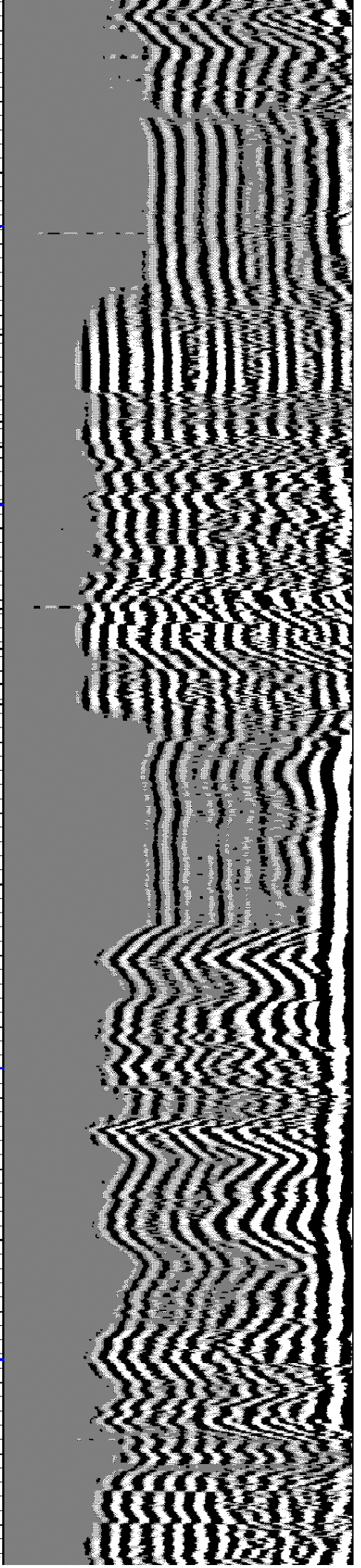
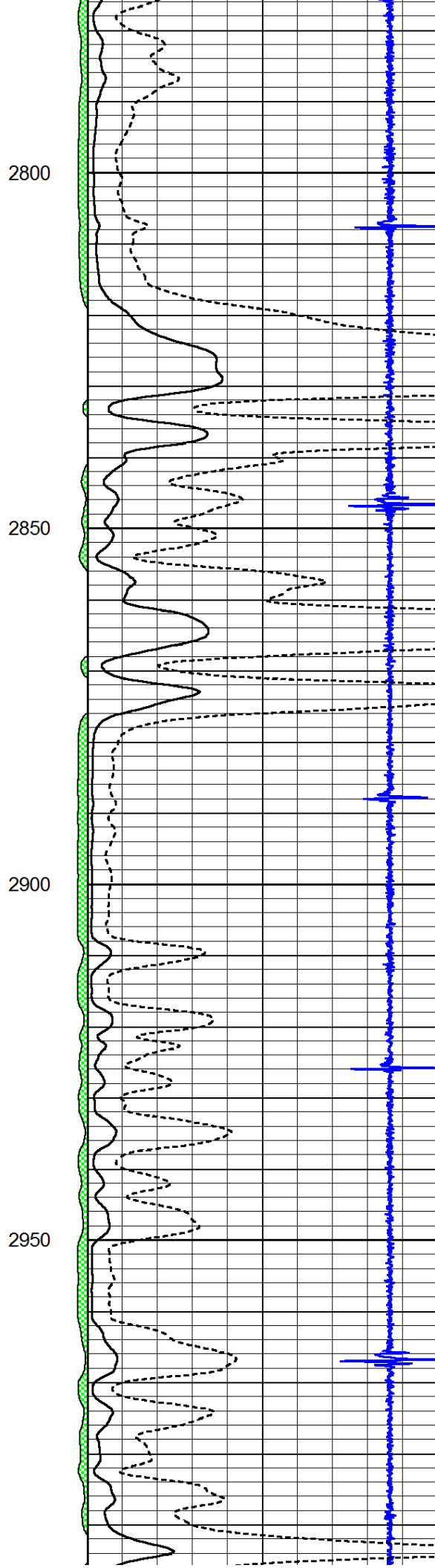
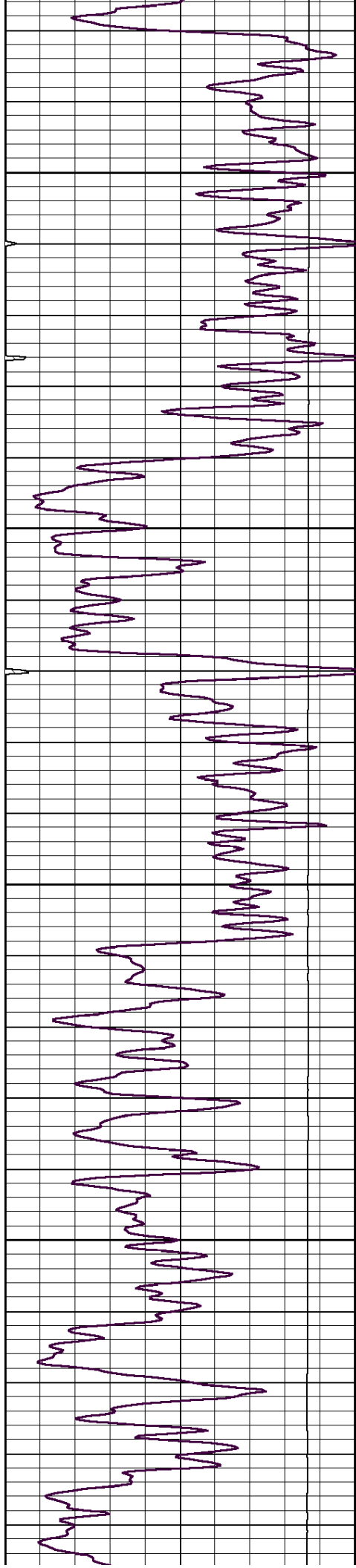
2250

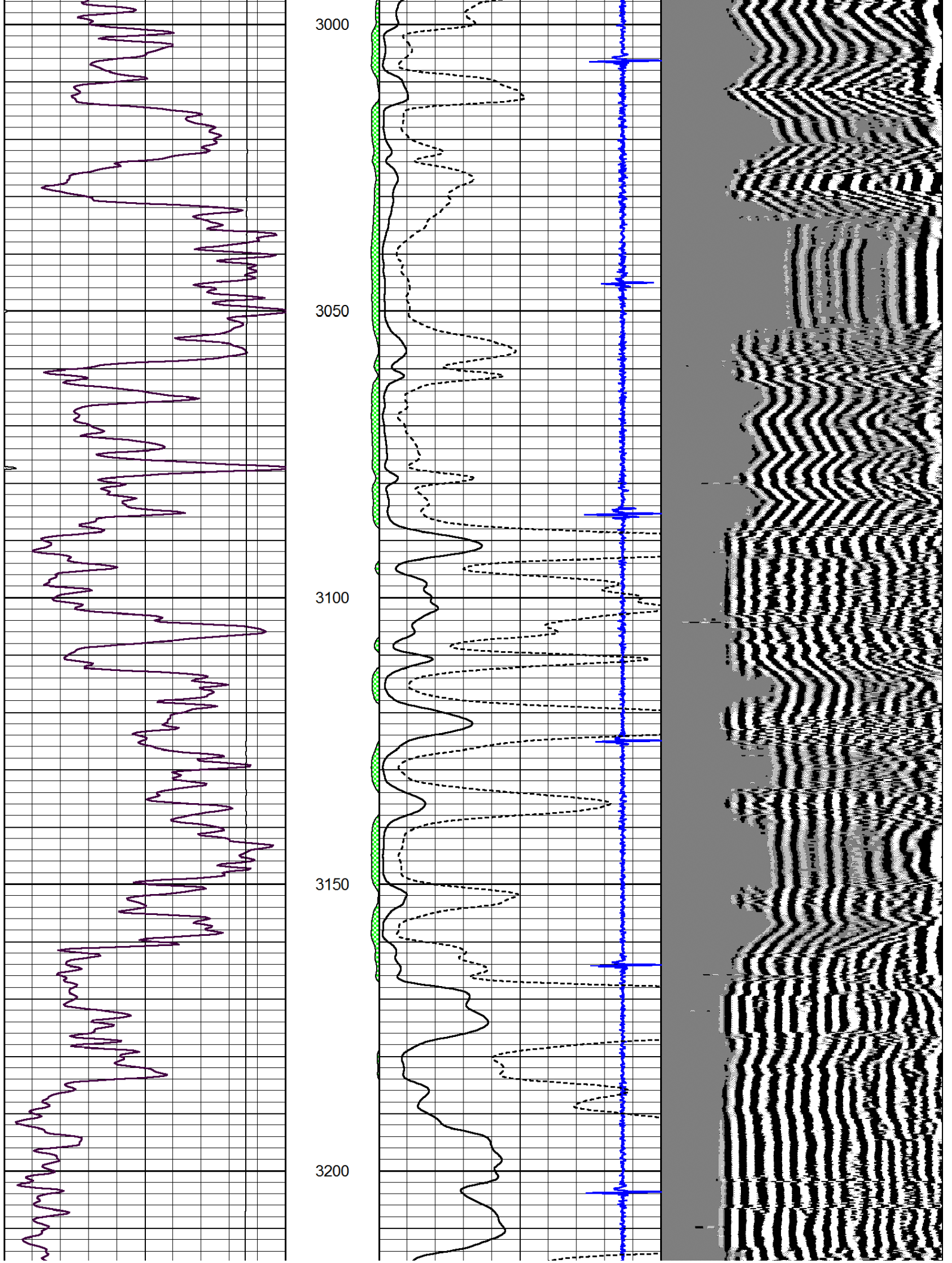
2300

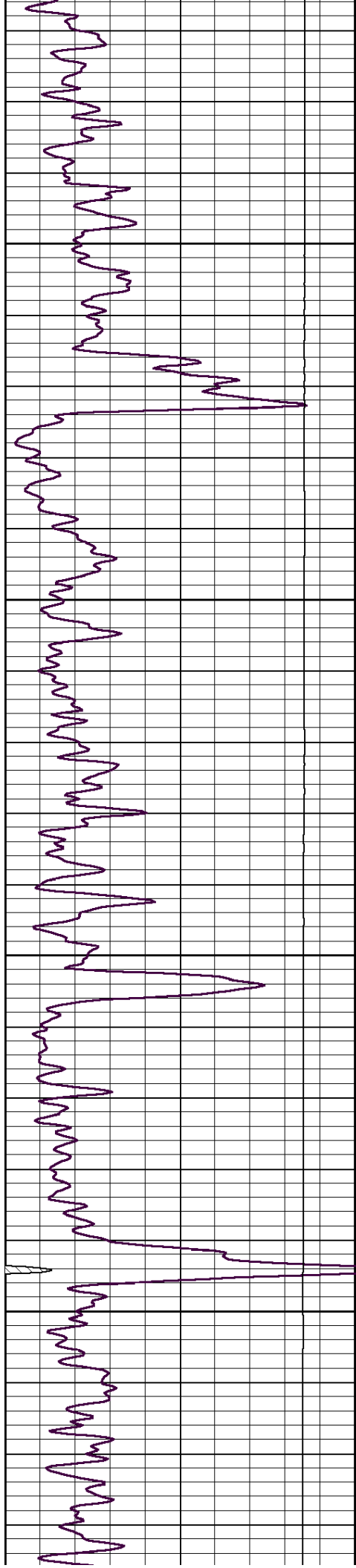










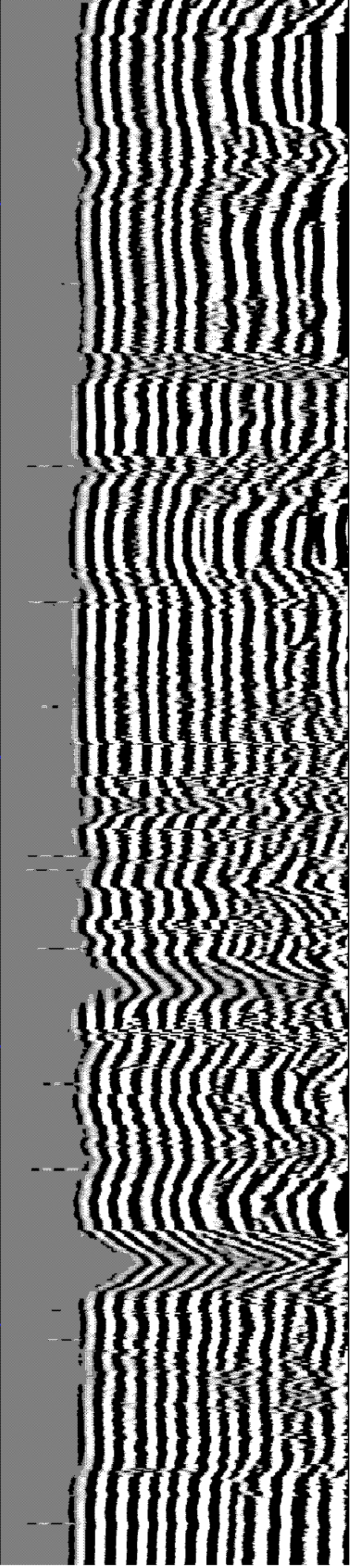
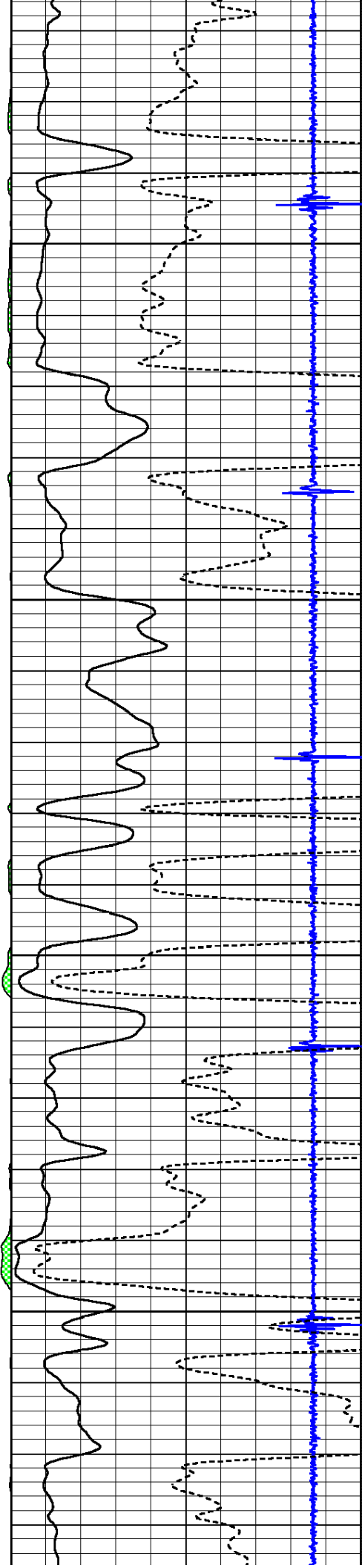


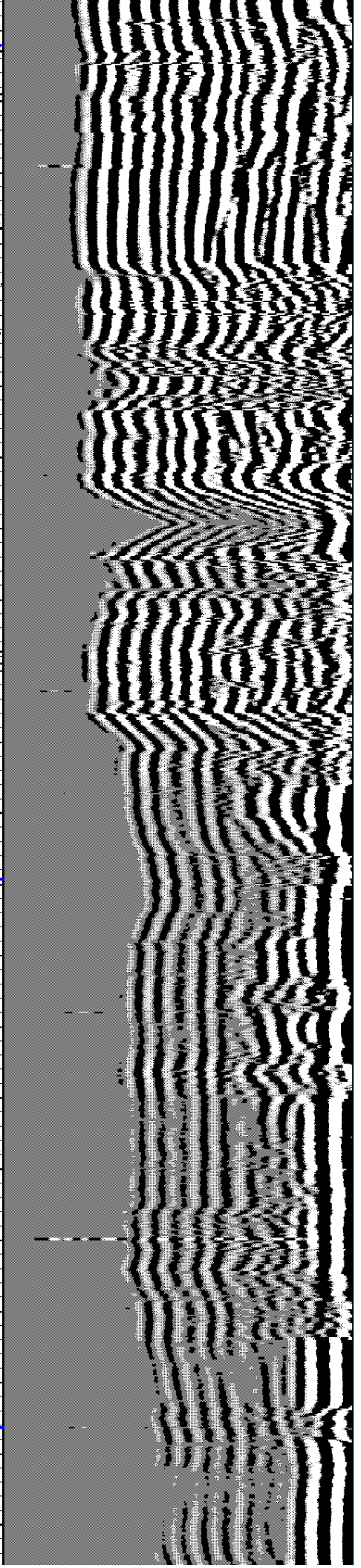
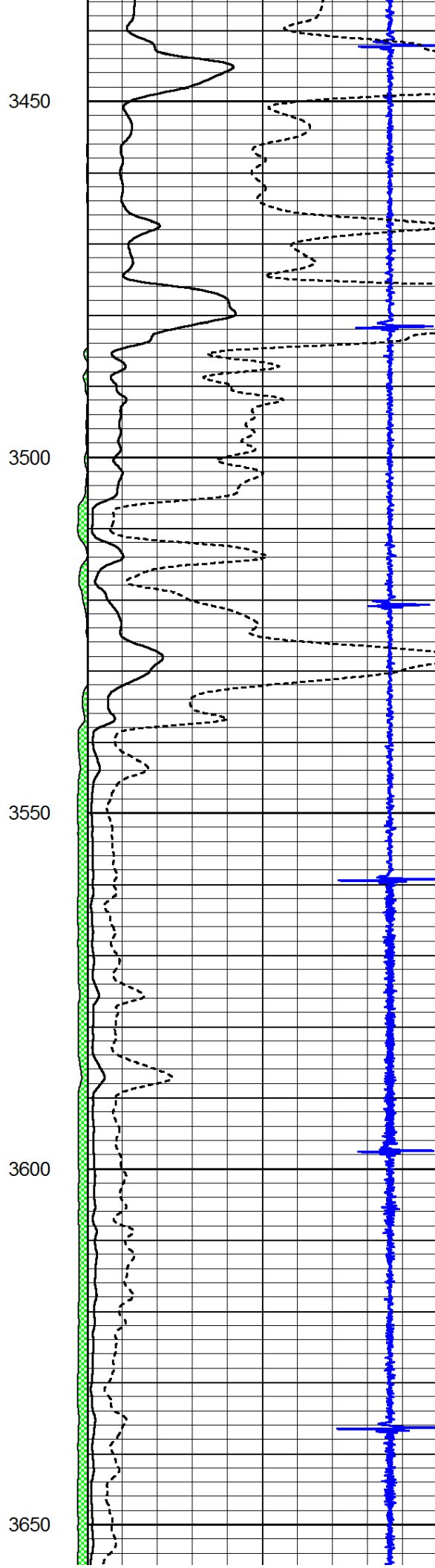
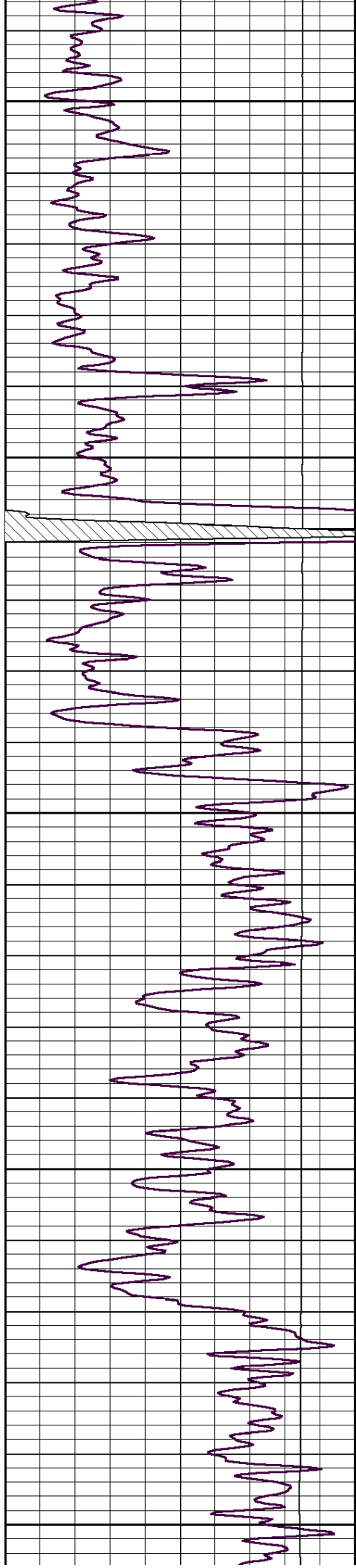
3250

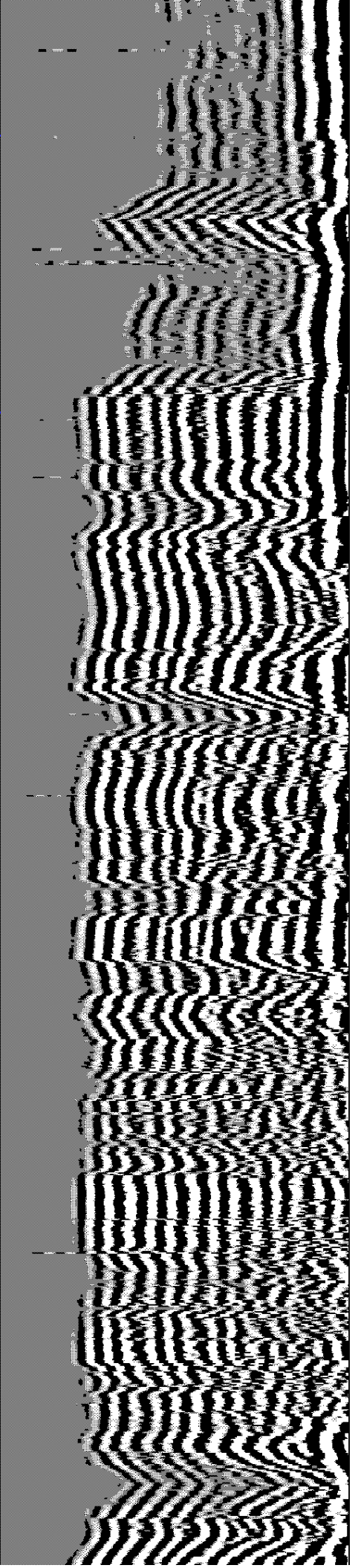
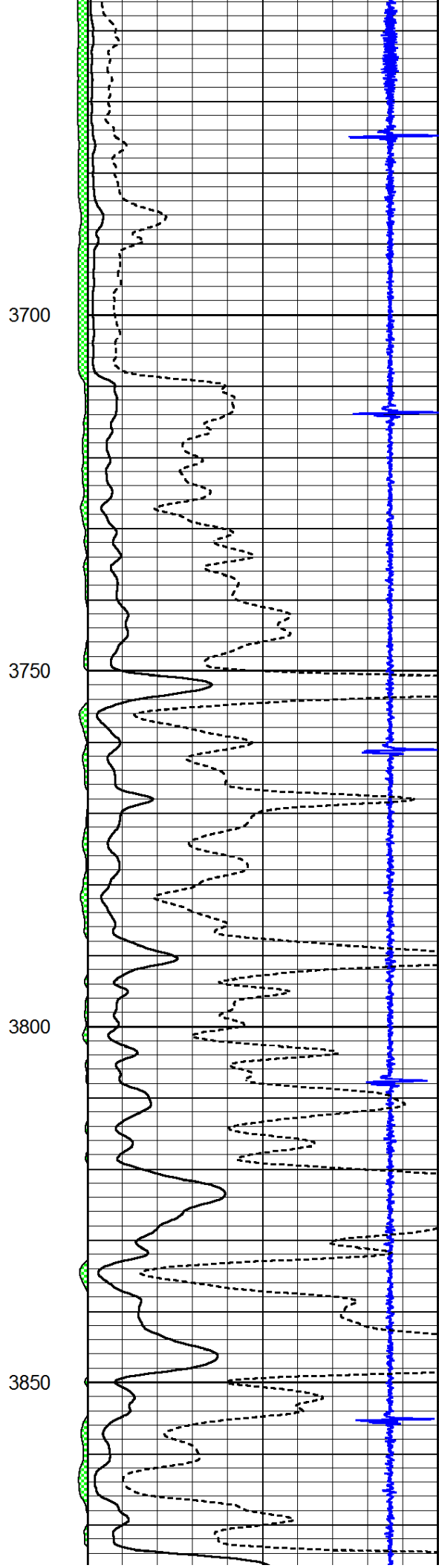
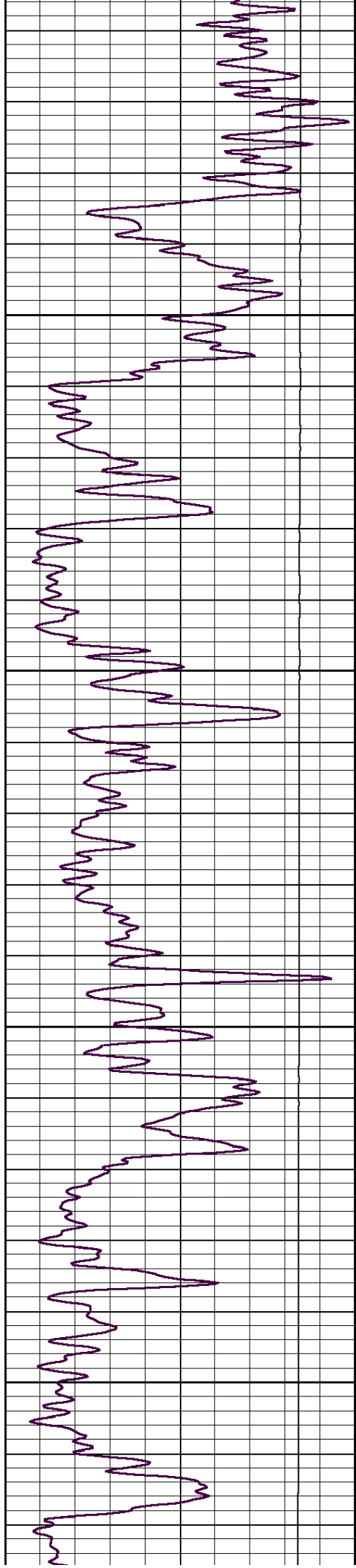
3300

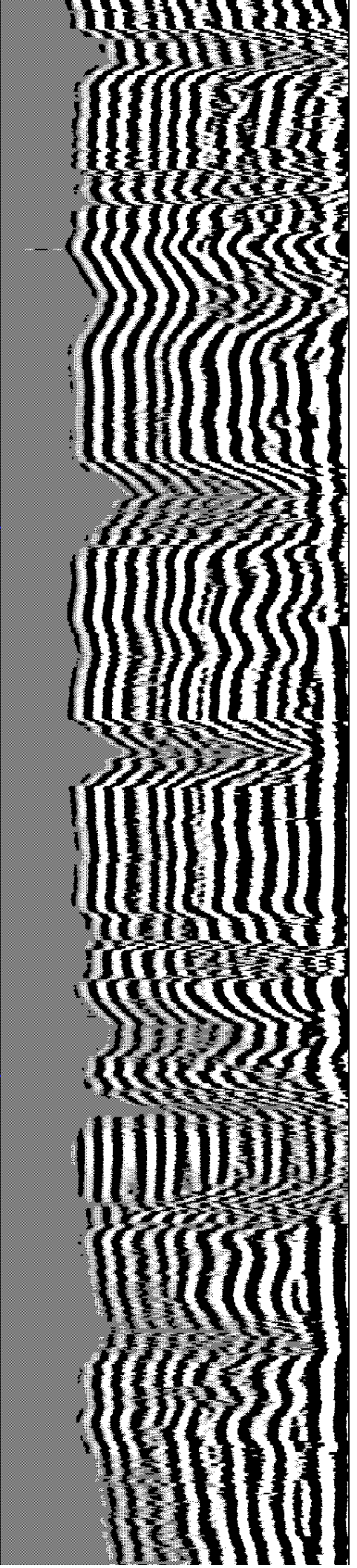
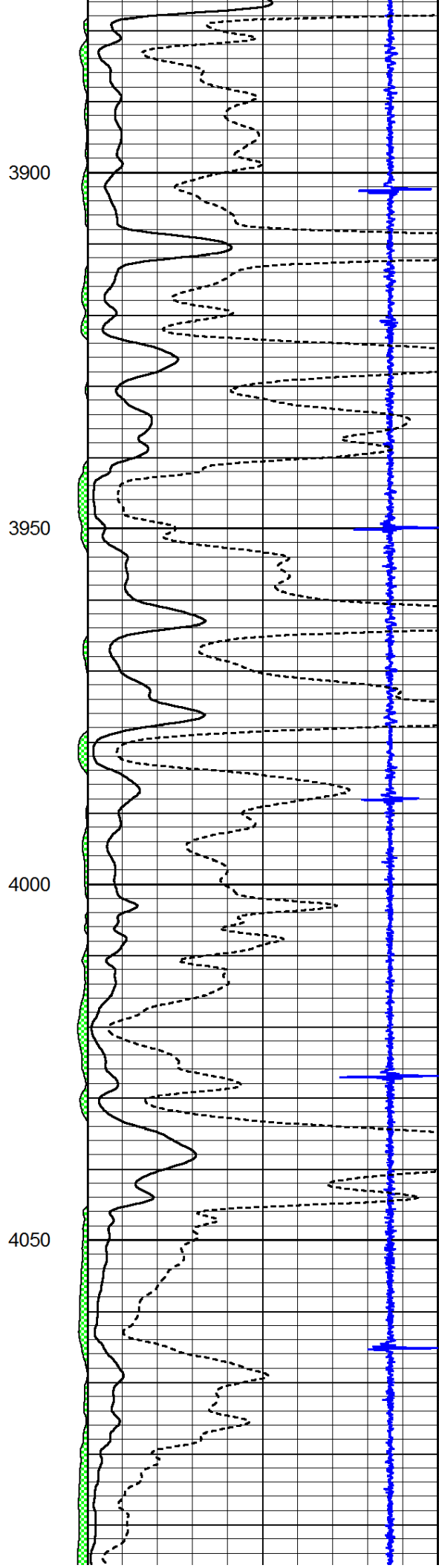
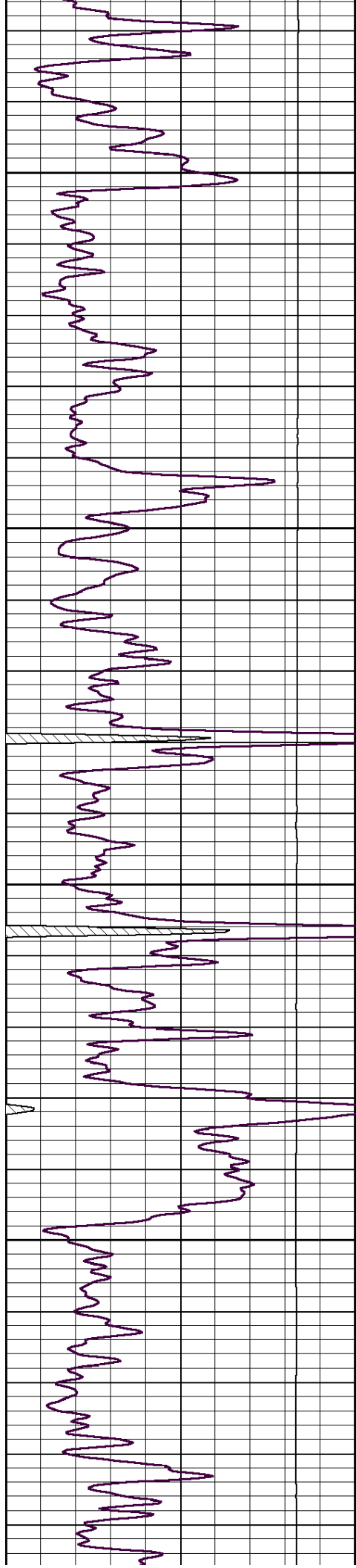
3350

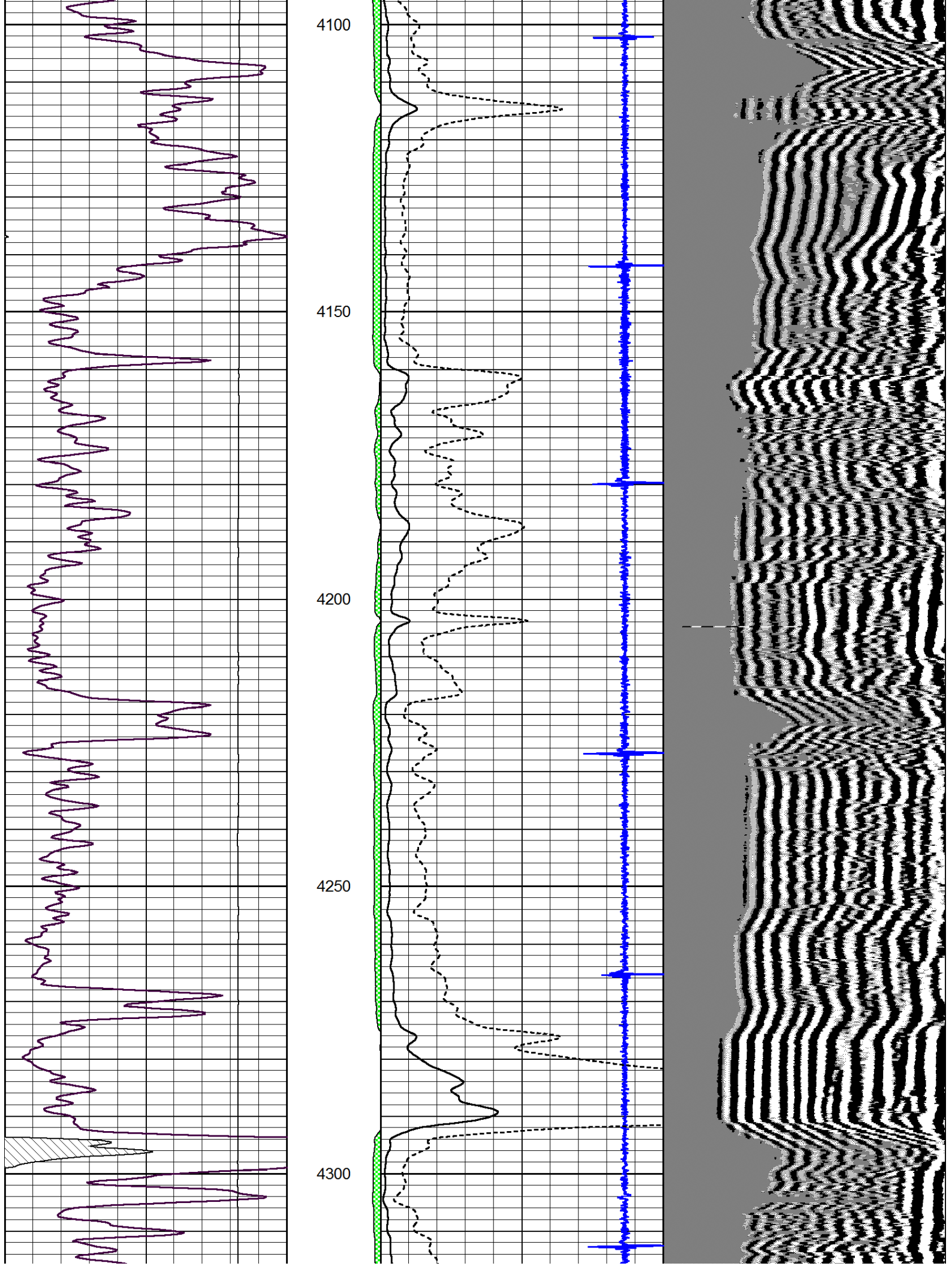
3400

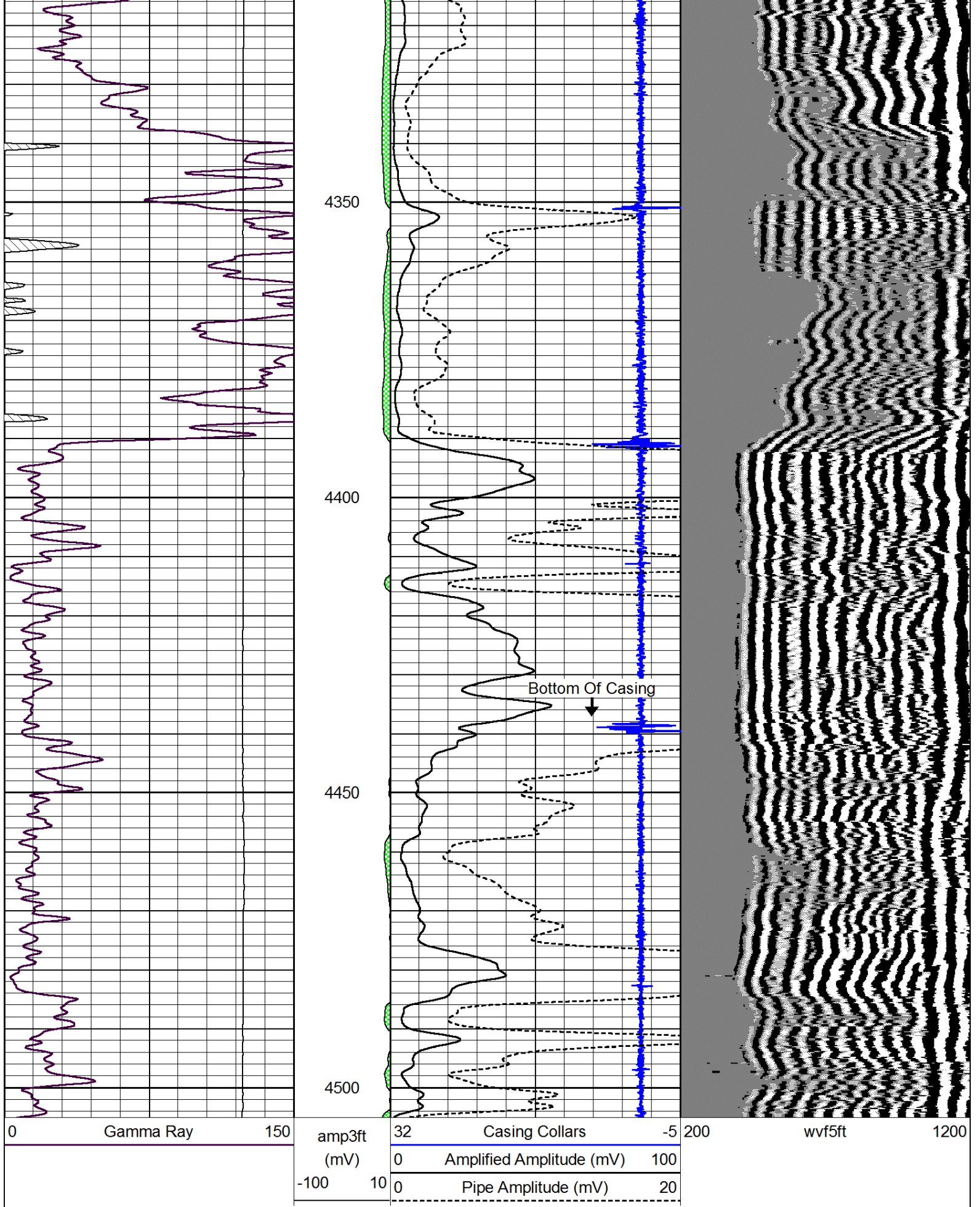








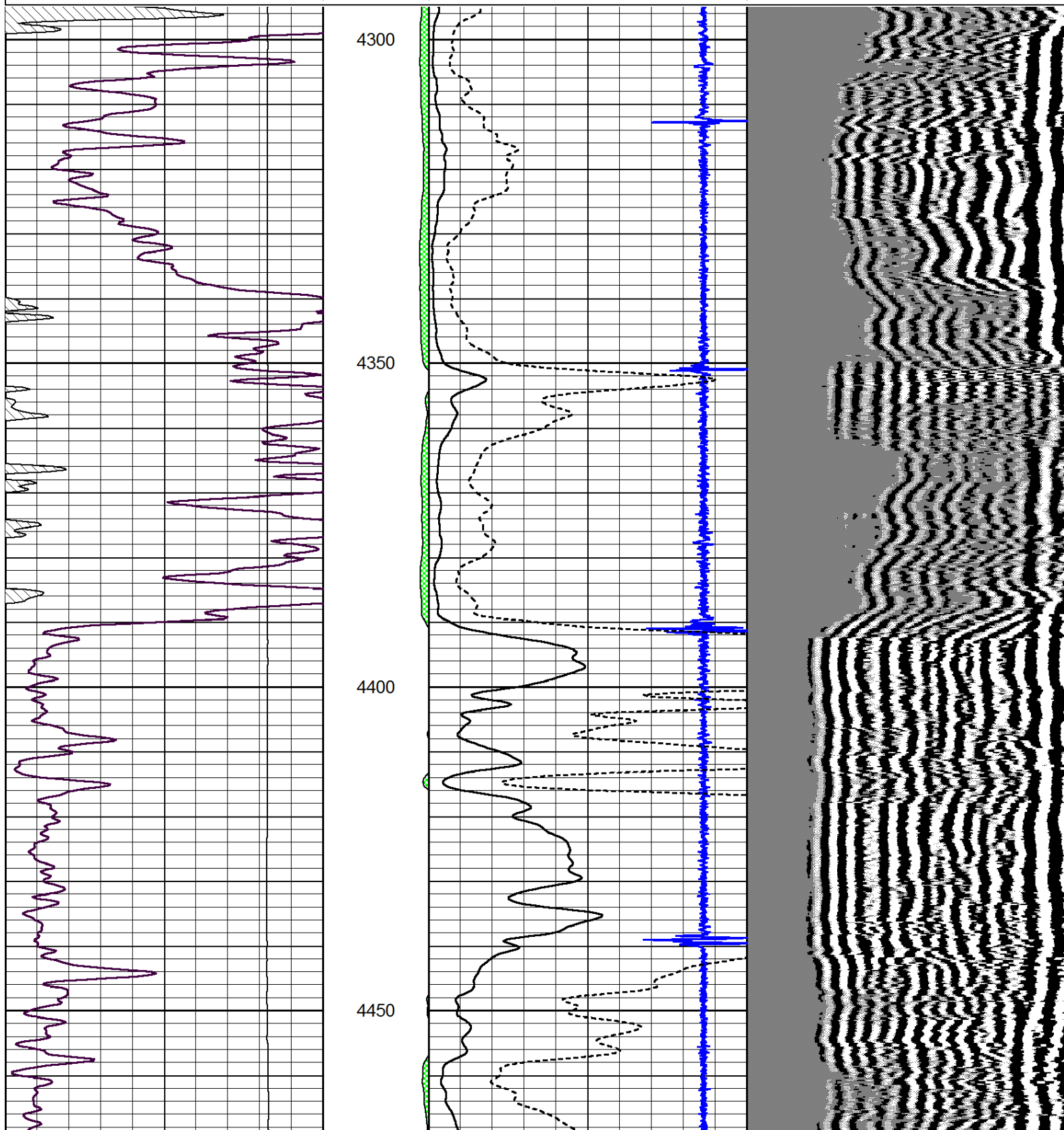


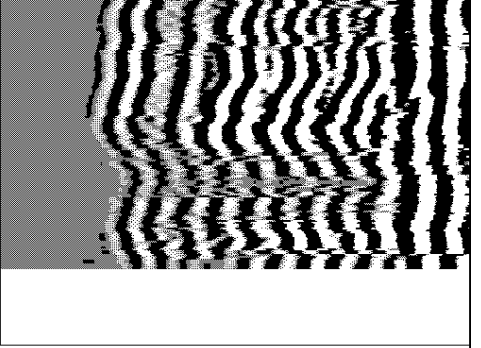
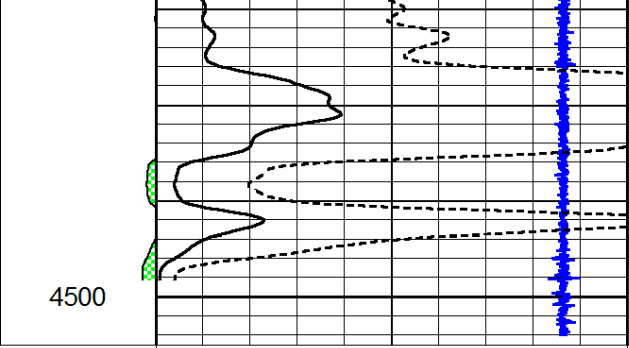
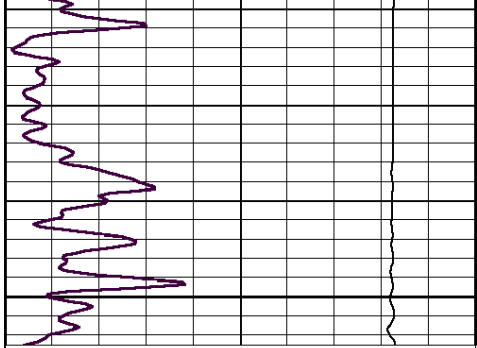


Report Section

Database File: wpx-schepmann-1-21-swd.db
 Dataset Pathname: grcbl/pass10
 Presentation Format: cbldr
 Dataset Creation: Mon Oct 21 11:52:32 2013 by Log SCH 111116
 Charted by: Depth in Feet scaled 1:240

| | | | | | | | | | |
|---|-----------|-----|--------|----|--------------------------|-----|-----|--------|------|
| 0 | Gamma Ray | 150 | amp3ft | 32 | Casing Collars | -5 | 200 | wvf5ft | 1200 |
| | | | (mV) | 0 | Amplified Amplitude (mV) | 100 | | | |
| | | | -100 | 10 | Pipe Amplitude (mV) | 20 | | | |





| | | | | | | | | | |
|---|-----------|-----|--------|----|--------------------------|-----|-----|--------|------|
| 0 | Gamma Ray | 150 | amp3ft | 32 | Casing Collars | -5 | 200 | wvf5ft | 1200 |
| | | | (mV) | 0 | Amplified Amplitude (mV) | 100 | | | |
| | | | -100 | 10 | Pipe Amplitude (mV) | 20 | | | |