



TRILOBITE TESTING, INC.

DRILL STEM TEST REPORT

Shakespeare Oil Co. Inc

27-16s-34w Scott, KS

202 W. Main St
Salem IL 62881

Stoll Comm 1-27

Job Ticket: 55505

DST#: 1

ATTN: Tim Priest

Test Start: 2013.09.29 @ 05:40:00

GENERAL INFORMATION:

Formation: **LKC H & I**

Deviated: No Whipstock: ft (KB)

Time Tool Opened: 08:19:45

Time Test Ended: 13:43:45

Test Type: Conventional Bottom Hole (Initial)

Tester: Bradley Walter

Unit No: 69

Interval: 4236.00 ft (KB) To 4285.00 ft (KB) (TVD)

Reference Elevations: 3139.00 ft (KB)

Total Depth: 4285.00 ft (KB) (TVD)

3129.00 ft (CF)

Hole Diameter: 7.88 inches Hole Condition: Good

KB to GR/CF: 10.00 ft

Serial #: 8677 Inside

Press @ Run Depth: 79.89 psig @ 4237.00 ft (KB)

Capacity: 8000.00 psig

Start Date: 2013.09.29

End Date: 2013.09.29

Last Calib.: 2013.09.29

Start Time: 05:40:05

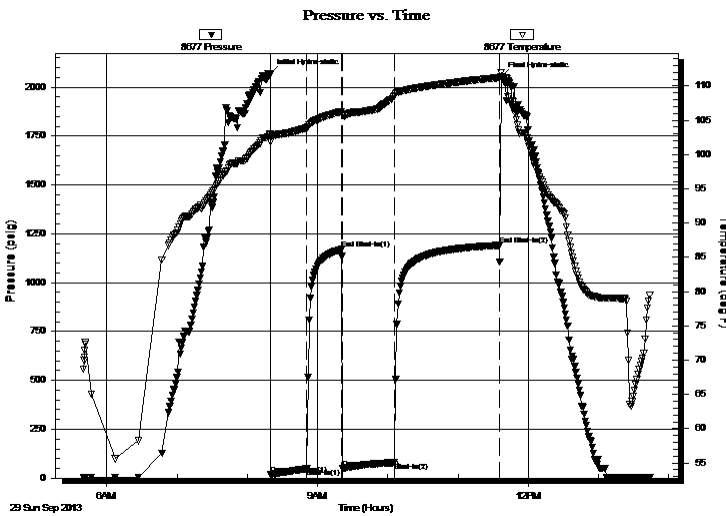
End Time: 13:43:44

Time On Btm: 2013.09.29 @ 08:19:30

Time Off Btm: 2013.09.29 @ 11:36:45

TEST COMMENT: IF: 3" blow.
IS: No return.
FF: 3" blow.
FS: No return.

PRESSURE SUMMARY



Time (Min.)	Pressure (psig)	Temp (deg F)	Annotation
0	2067.31	103.00	Initial Hydro-static
1	18.19	101.77	Open To Flow (1)
32	48.68	103.86	Shut-In(1)
61	1170.00	106.28	End Shut-In(1)
62	50.65	105.85	Open To Flow (2)
107	79.89	108.54	Shut-In(2)
196	1191.26	111.20	End Shut-In(2)
198	2052.83	111.98	Final Hydro-static

Recovery

Length (ft)	Description	Volume (bbl)
150.00	mcw 30m 70w (oil spots in tool)	1.02

Gas Rates

	Choke (inches)	Pressure (psig)	Gas Rate (Mcf/d)



**TRILOBITE
TESTING, INC.**

DRILL STEM TEST REPORT

FLUID SUMMARY

Shakespeare Oil Co. Inc

27-16s-34w Scott, KS

202 W. Main St
Salem IL 62881

Stoll Comm 1-27

Job Ticket: 55505

DST#: 1

ATTN: Tim Priest

Test Start: 2013.09.29 @ 05:40:00

Mud and Cushion Information

Mud Type: Gel Chem

Cushion Type:

Oil API:

0 deg API

Mud Weight: 9.00 lb/gal

Cushion Length:

ft

Water Salinity:

21000 ppm

Viscosity: 54.00 sec/qt

Cushion Volume:

bbf

Water Loss: 6.39 in³

Gas Cushion Type:

Resistivity: 0.00 ohm.m

Gas Cushion Pressure:

psig

Salinity: 4000.00 ppm

Filter Cake: 1.00 inches

Recovery Information

Recovery Table

Length ft	Description	Volume bbf
150.00	mcw 30m 70w (oil spots in tool)	1.020

Total Length: 150.00 ft Total Volume: 1.020 bbf

Num Fluid Samples: 0

Num Gas Bombs: 0

Serial #:

Laboratory Name:

Laboratory Location:

Recovery Comments: rw is .325 @ 72 = 21,000ppm

Serial #: 8677

Inside

Shakespeare Oil Co. Inc

Stoll Comm 1-27

DST Test Number: 1

