

# Andrew White

Petroleum Geologist

Scale 1:240 (5"=100') Imperial  
Measured Depth Log

Well Name: Bouziden #1  
Location: Sec. 3 - 32S - R23W  
License Number: API: 15 - 025 - 21564 - 0000  
Spud Date: October 8, 2013  
Surface Coordinates: 102' FSL and 2293' FEL  
Region: Clark Co., KS  
Drilling Completed: October 20, 2013

Bottom Hole  
Coordinates:  
Ground Elevation (ft): 2206                      K.B. Elevation (ft): 2220  
Logged Interval (ft): 4300                      To: 6875                      Total Depth (ft): 6875  
Formation: Arbuckle  
Type of Drilling Fluid: Chemical

Printed by MUD.LOG from WellSight Systems 1-800-447-1534 www.WellSight.com

## OPERATOR

Company: White Exploration Inc.  
Address: 1635 N. Waterfront Pkwy  
Ste. 100  
Wichita, KS 67206

## GEOLOGIST

Name: Steve Miller/ Andrew White  
Company:  
Address:

## General Info

LTD is 15 feet deeper than RTD

No dry samples were available on the well.

Bouziden #1					Coral Coast Jim Miller #1				
102' FSL, 2293' FEL					1214' FNL, 1980 FEL				
3-32S-23W					7-32S-22W				
KB: 2220					KB: 2347				
					Structural Relationship				
Formation	Sample	Sub-Sea	Log	Sub-Sea	Log	Sub-Sea	Sample	Log	
Heebner	4362	-2142	4346	-2126	4510	-2163	-21	-37	
Lansing	4530	-2310	4551	-2331	4699	-2352	-42	-21	
Stark	4938	-2718	4952	-2732	5104	-2757	-39	-25	
Hushpuckney	4976	-2756	4996	-2776	5150	-2803	-47	-27	
Pawnee	5136	-2916	5150	-2930	5308	-2961	-45	-31	
Cherokee	5198	-2978	5199	-2979	5359	-3012	-34	-33	
Mississippi	5343	-3123	5352	-3132	5496	-3149	-26	-17	
Cowley	6100	-3880	6112	-3892	6223	-3876	4	16	
Viola	6600	-4380	6615	-4395	6662	-4315	65	80	
Simpson	6723	-4503	6733	-4513	6852	-4505	-2	8	
Arbuckle	6798	-4578	6813	-4593	6942	-4595	-17	-2	

### DSTs

None

### ROCK TYPES

#### POROSITY

- Earthy
- Fenest
- Fracture
- Inter
- Moldic
- Organic
- Pinpoint
- Vuggy

- Shale
- Shcol
- Shgy
- Sltst
- Ss
- Till

#### MINERAL

- Anhy
- Arggrn
- Arg
- Bent
- Bit
- Brecfrag
- Calc
- Carb
- Chtdk
- Chtlt
- Dol
- Feldspar
- Ferrpel
- Ferr
- Glau
- Gyp
- Hvymin

- Kaol
- Marl
- Minxl
- Nodule
- Phos
- Pyr
- Salt
- Sandy
- Silt
- Sil
- Sulphur
- Tuff

#### FOSSIL

- Algae
- Amph
- Belm
- Bioclst
- Brach
- Bryozoa
- Cephal
- Coral
- Crin
- Echin
- Fish

- Foram
- Fossil
- Gastro
- Oolite
- Ostra
- Pelec
- Pellet
- Pisolite
- Plant
- Strom

#### STRINGER

- Anhy
- Arg
- Bent
- Coal
- Dol
- Gyp
- Ls
- Mrst
- Sltstrg
- Ssstrg
- Boundst

#### TEXTURE

- Boundst

- Chalky
- Cryxln
- Earthy
- Finexln
- Grainst
- Lithogr
- Microxln
- Mudst
- Packst
- Wackest

#### OIL SHOW

- Even
- Spotted
- Ques
- Dead

#### INTERVAL

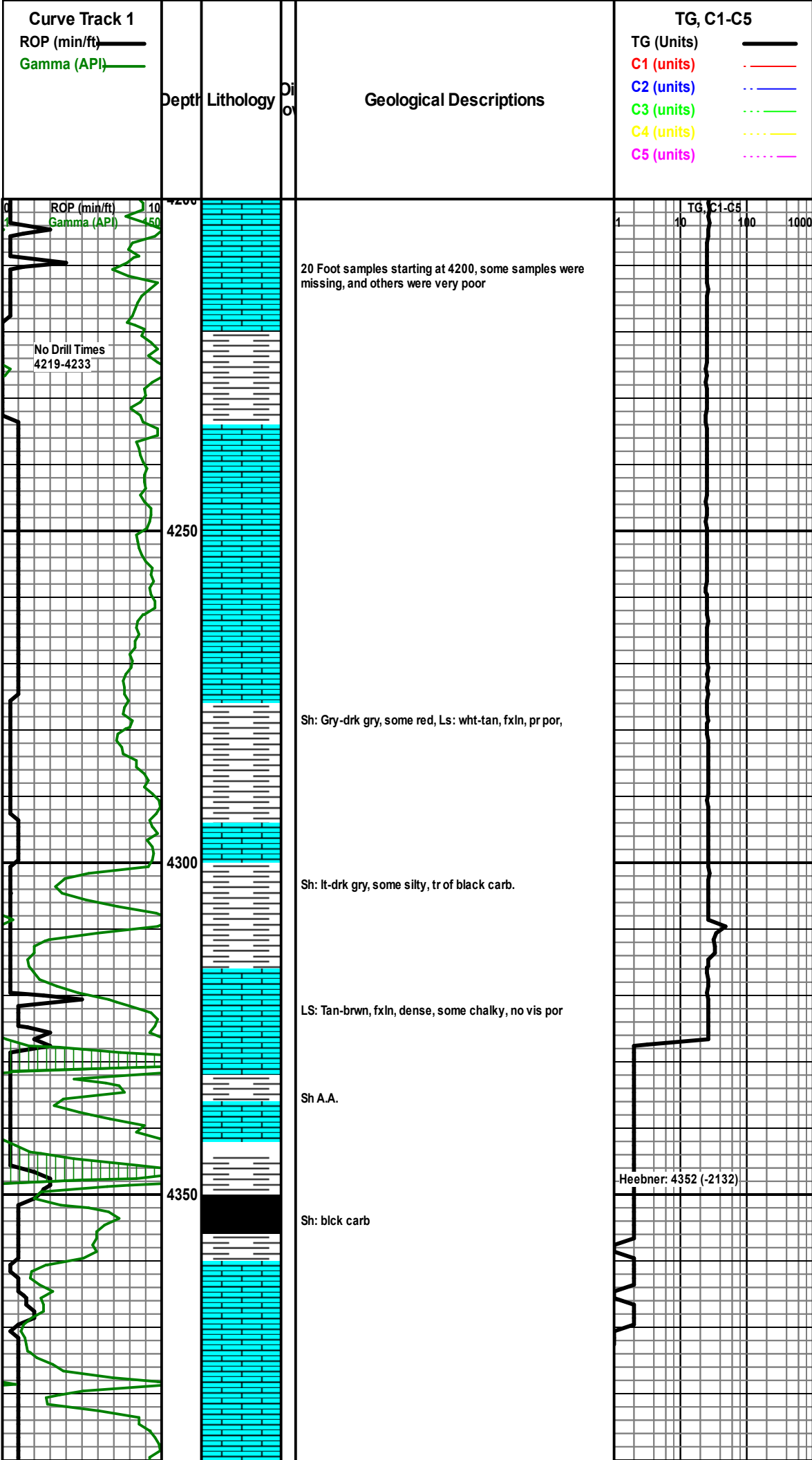
- Core
- Dst

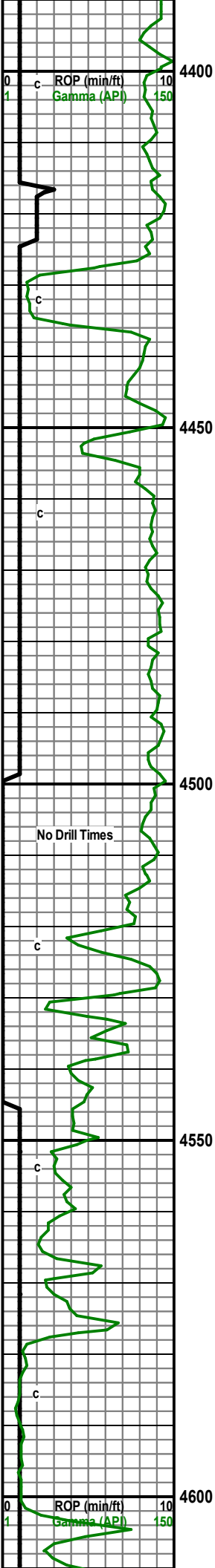
#### EVENT

- Rft
- Sidewall

#### LITHOLOGY

- Anhy
- Bent
- Brec
- Cht
- Clyst
- Coal
- Congl
- Dol
- Gyp
- Igne
- Lmst
- Meta
- Mrlst
- Salt





Sh: lt-drk gry, some silty, some LS grns, crm, fxln, no vis por

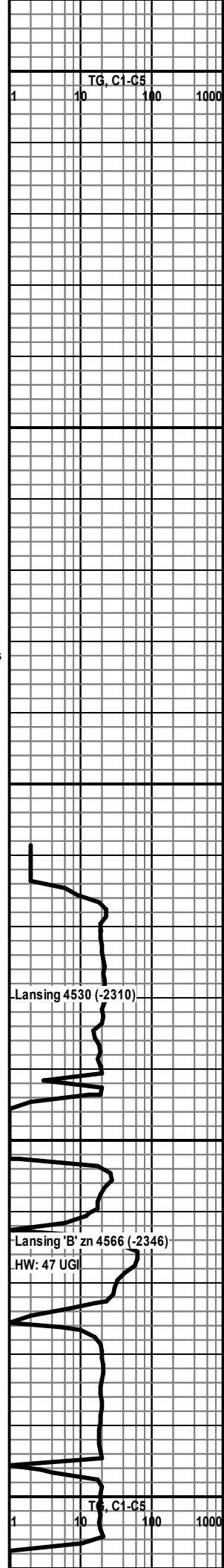
Sh: lt-drk gry, some black, some LS grns, crm-tan, fxln, dns w/ some por

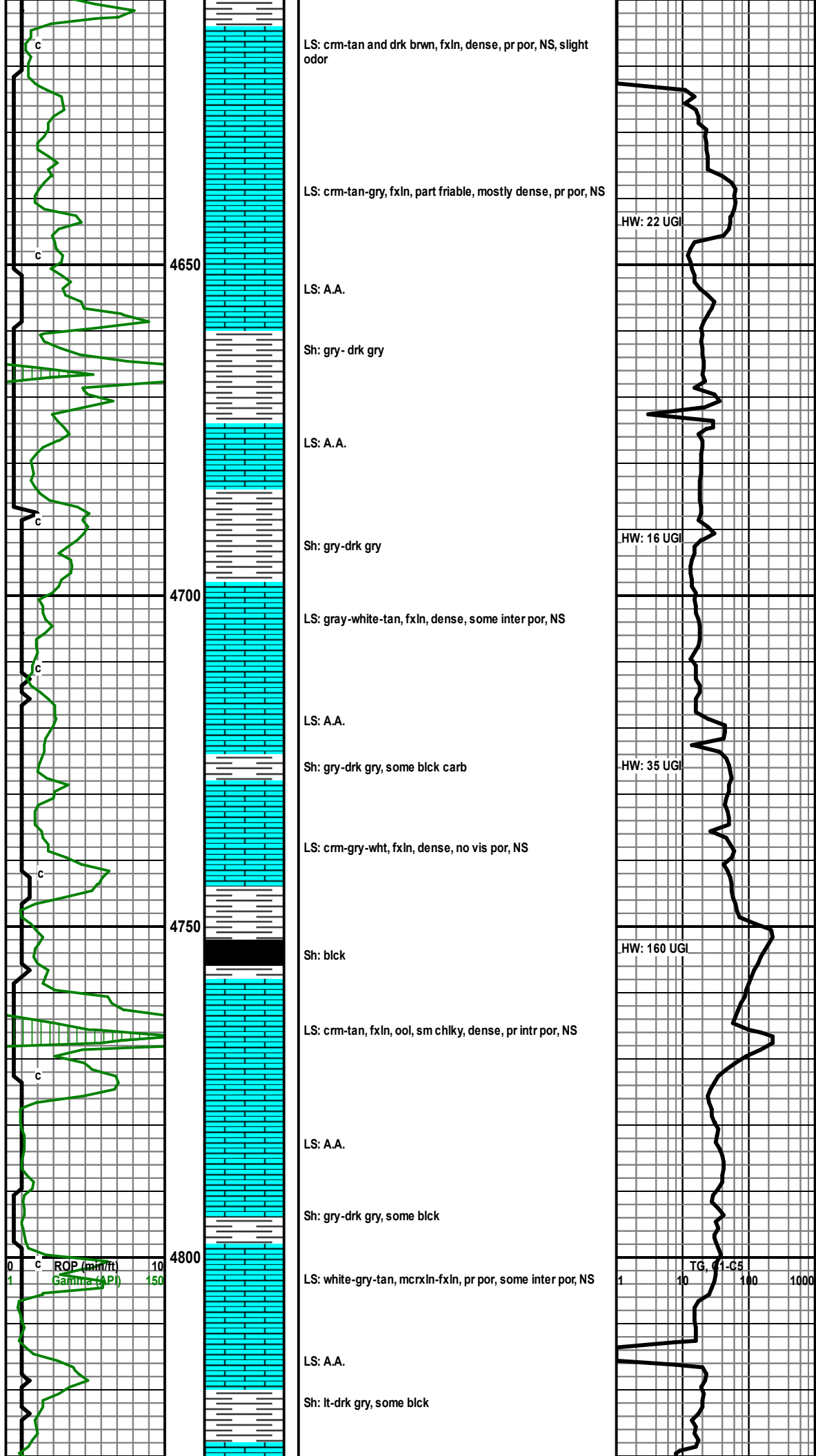
Sh: A.A., LS: A.A.

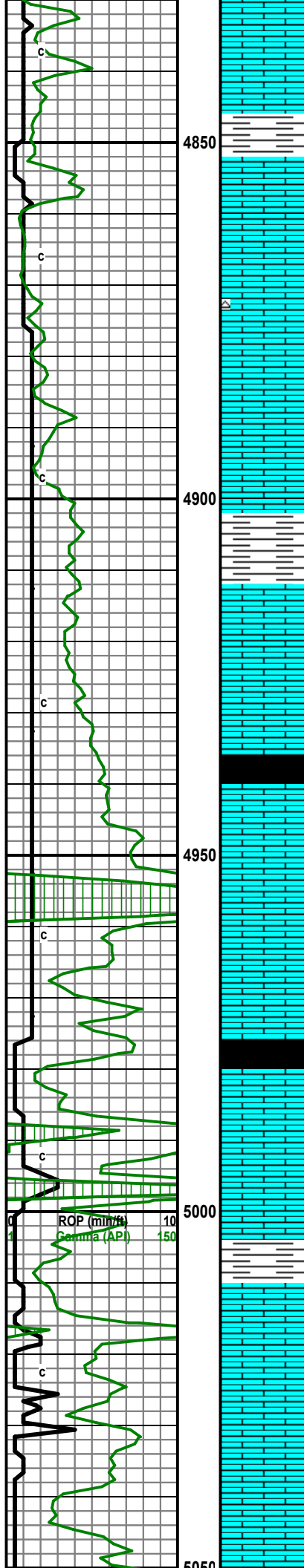
Sh: A.A; Ls, crm-lt tan, brwn, fxln, fos, pr por

LS: crm-tn, fxln to micro xln, some por, slight stain, slight odor

Sh: gry-drk gry, some red, LS: wht, crm-tan, fxln, dense, some good por, NS, NO







LS: crm-tan-white, mcrxln-fxln, some inter por, pr por, dense, NS

4850

Sh: lt gry-drk gry

LS: white-crm, fxln, pr por, friable, NS

LS: A.A. some gry, mcrxln, dense, no por, NS

4900

LS: A.A.

Sh: gry-drk gry

LS: white-crm-gry, mcrxln-fxln, some chalky, some por, dense, Sh: gry

Sh: blk

4950

LS: gry-brown-white, mcrxln-fxln, NV por-pr por, NS

LS: A.A.

Sh: drk gry- blk

LS: A.A.

LS: white-tan, some brwn, mcrxln-fxln, friable, pr-NV por,

5000

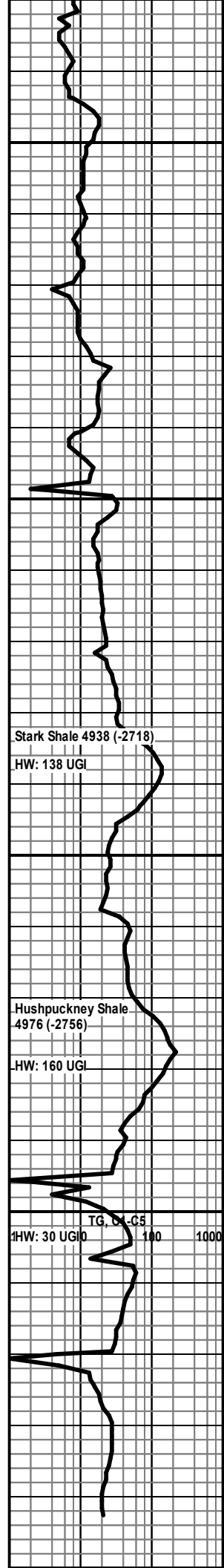
Sh: gry-drk gry, some blk

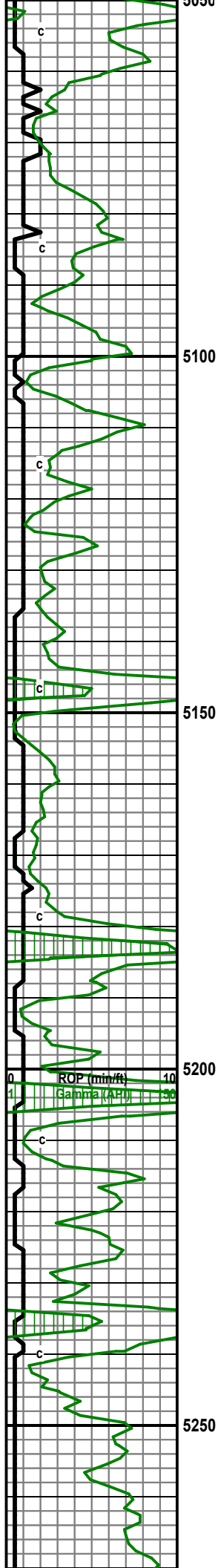
LS: gry-white-crm, mcrxln-fxln, dense, NV-pr por, NS

Sh: gry-blk

LS: gry-crm, mcrxln, dense NV-por, some white, chalky LS, friable, NS

5050





LS: A.A.

LS: gry-blk-tan, some white, mcrxln-fxln, NV por-pr por

LS: A.A. also white fxln, friable, slight odor, slight inter pr, slight odor, trc stain, NSFO, dull yell flour

5100

LS: white-tan, mcrxln-fxln, friable, some dense, NV por-pr por with some intergranul, NS

Sh: lt gry-gry

Poor Sample: seems like LS above with some gray shale

A.A.

5150

A.A. with black shale

LS: white-crm, mcrxln-fxln, friable, some dense pieces, NV-pr por, no odor, NS

Sh: blk carb,

5200

LS: tn-crm-gray, mcrxln-fn, some friable, dense, NV por, some chalky, NS

LS: white-crm-tan, fxln, some mcrxln, friable, some chalky, semi-por, NS

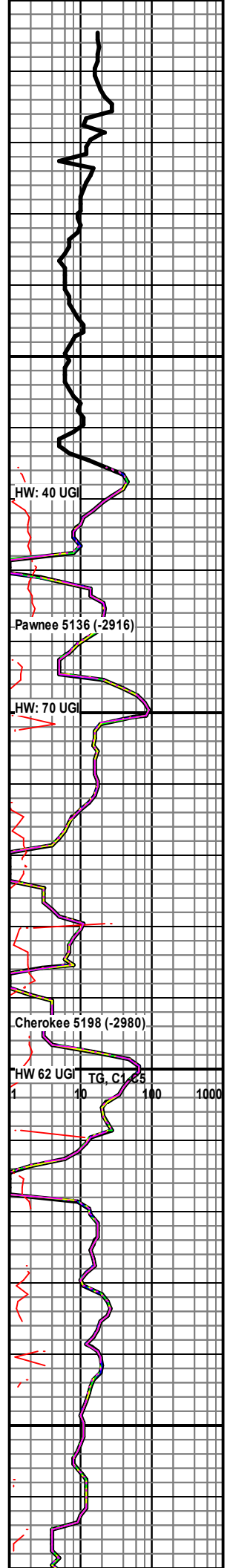
Sh: gry-blk carb.

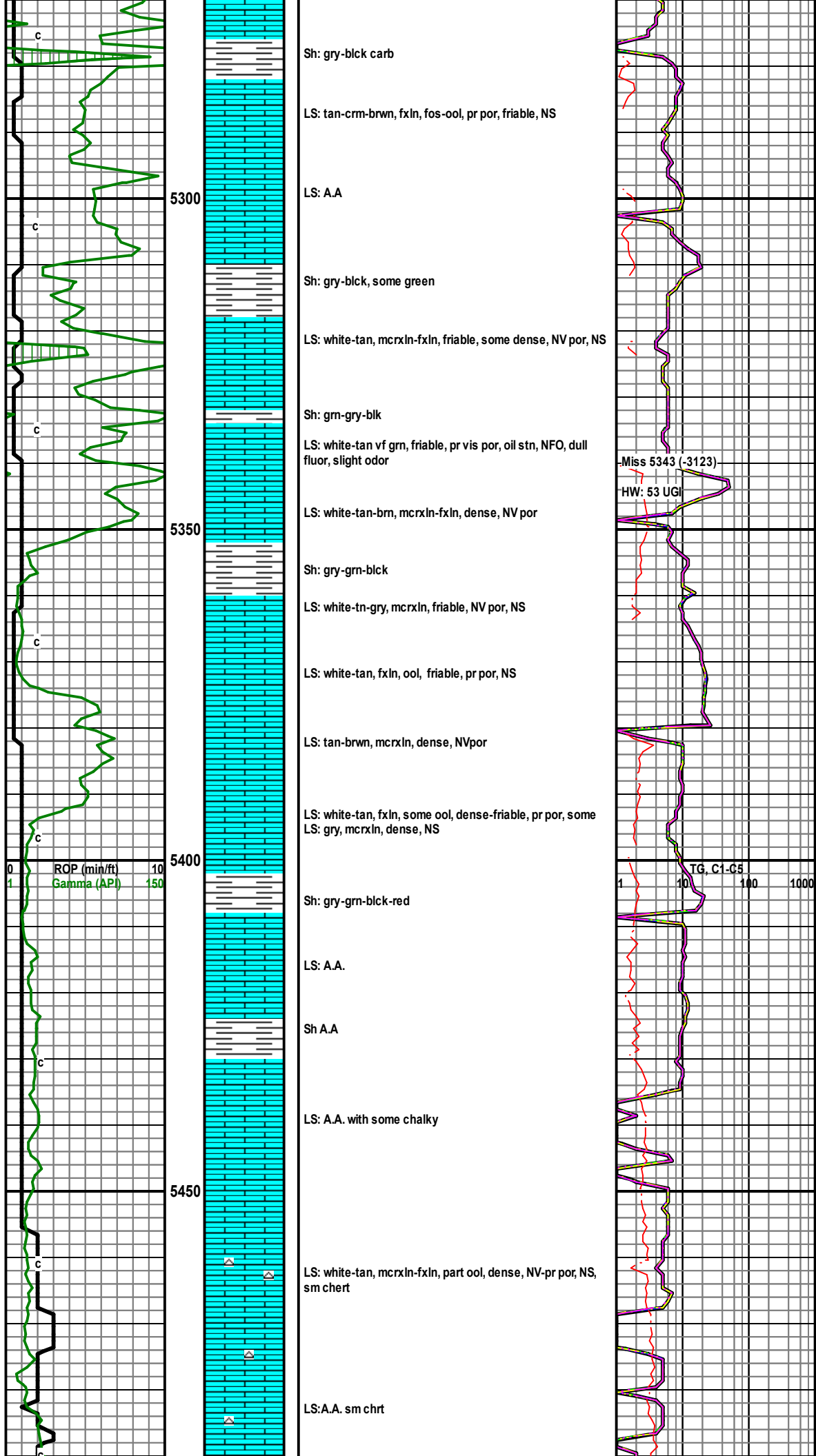
LS: A.A with some dense, NV por

5250

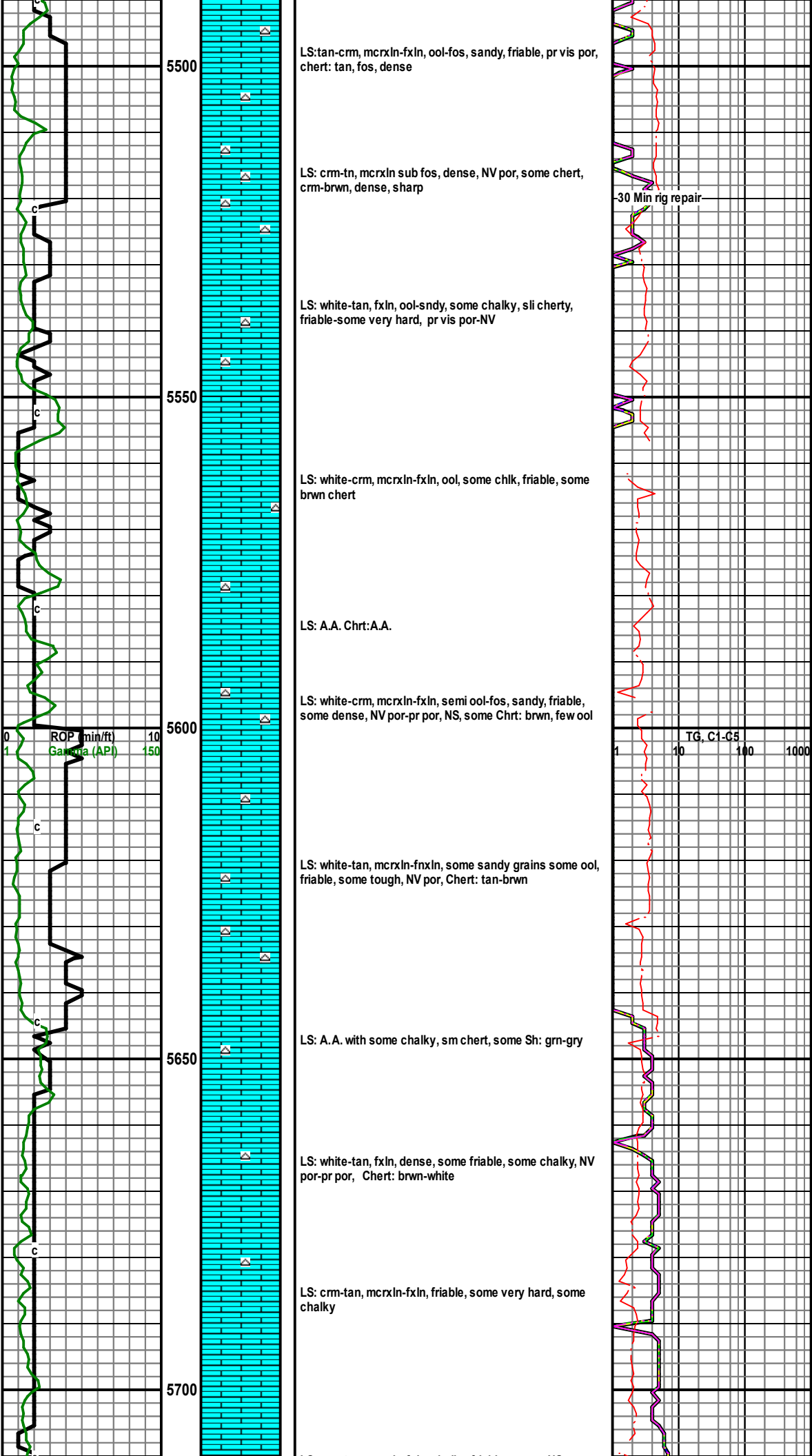
Sh: A.A.

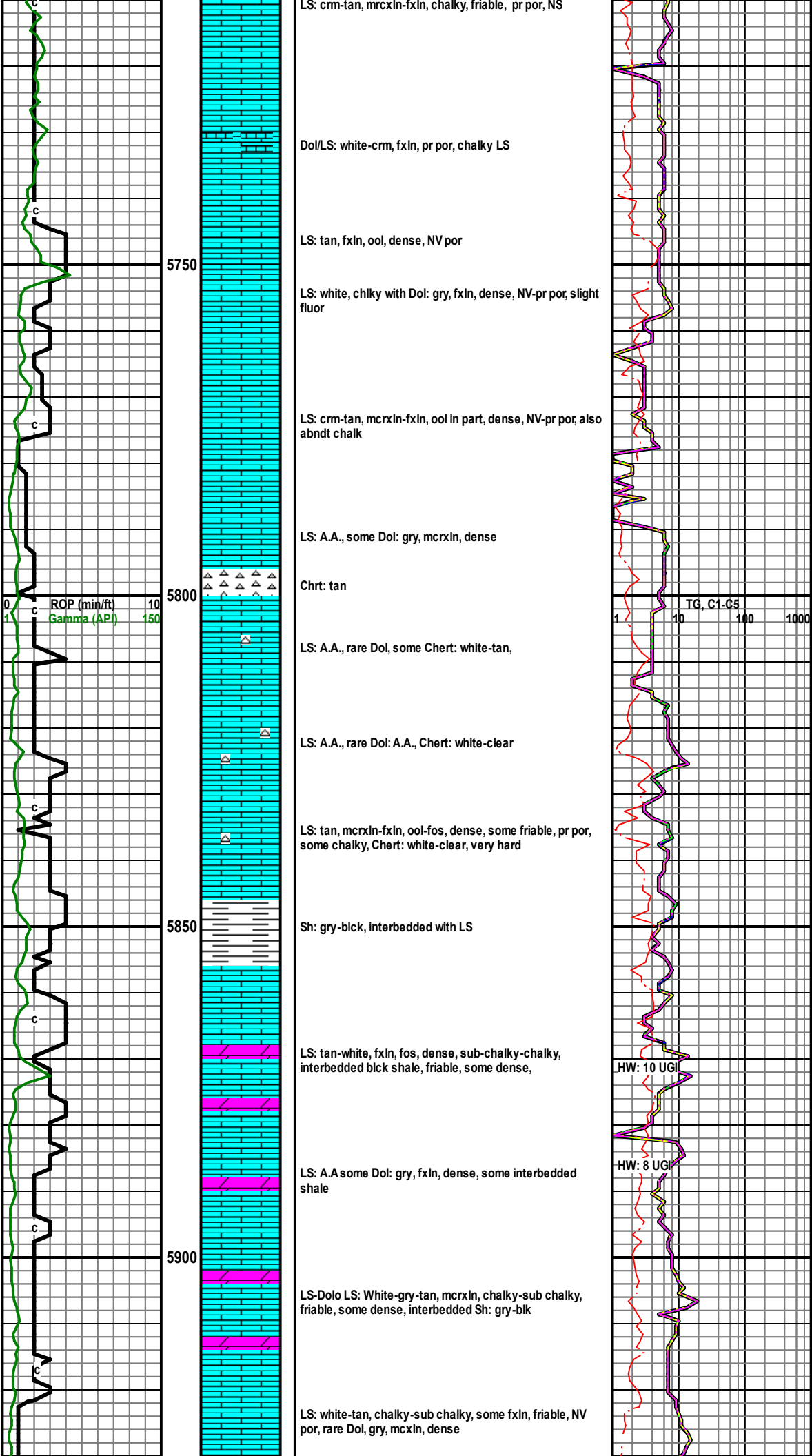
LS: gry, mcrxln, dense, NV por, some white, chalky friable, NS

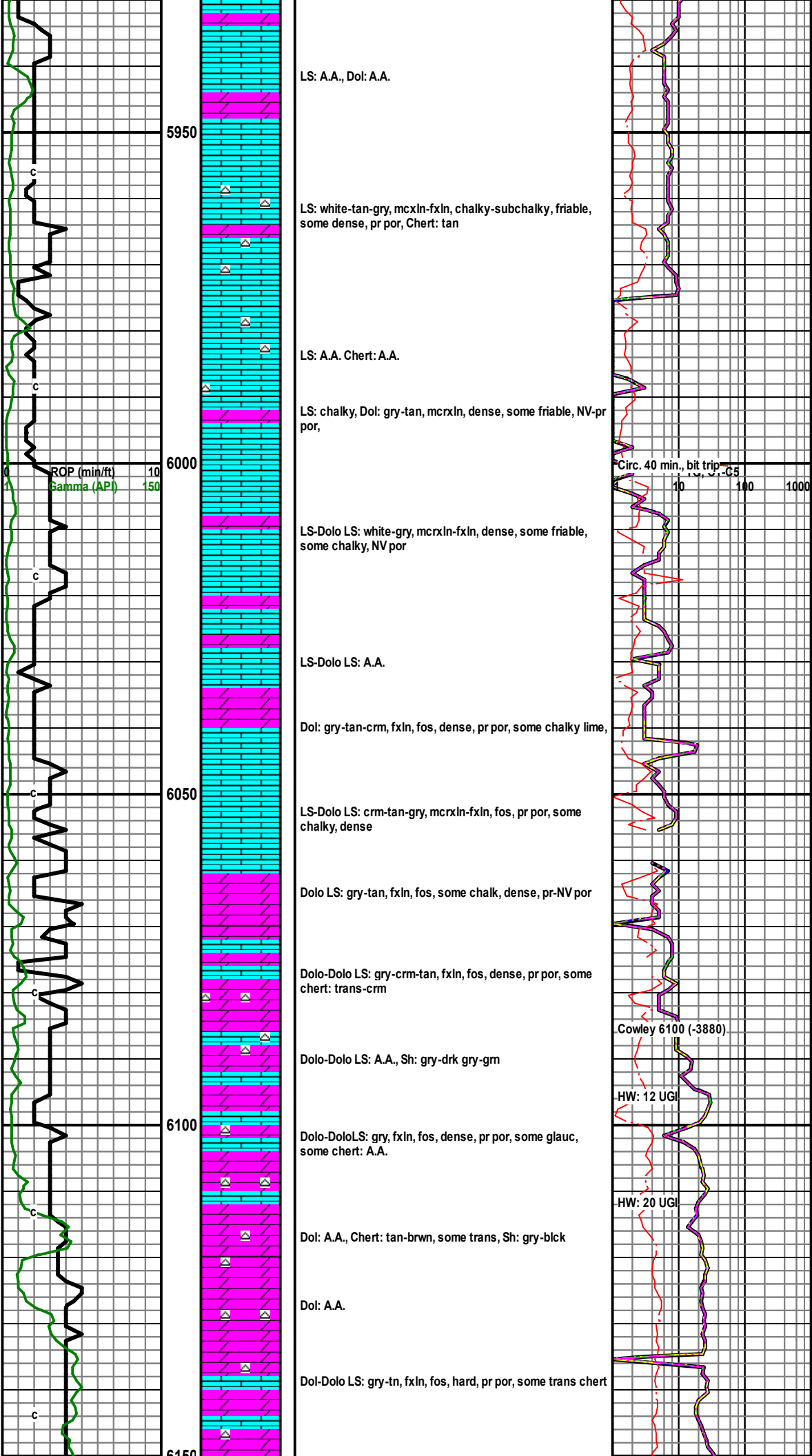


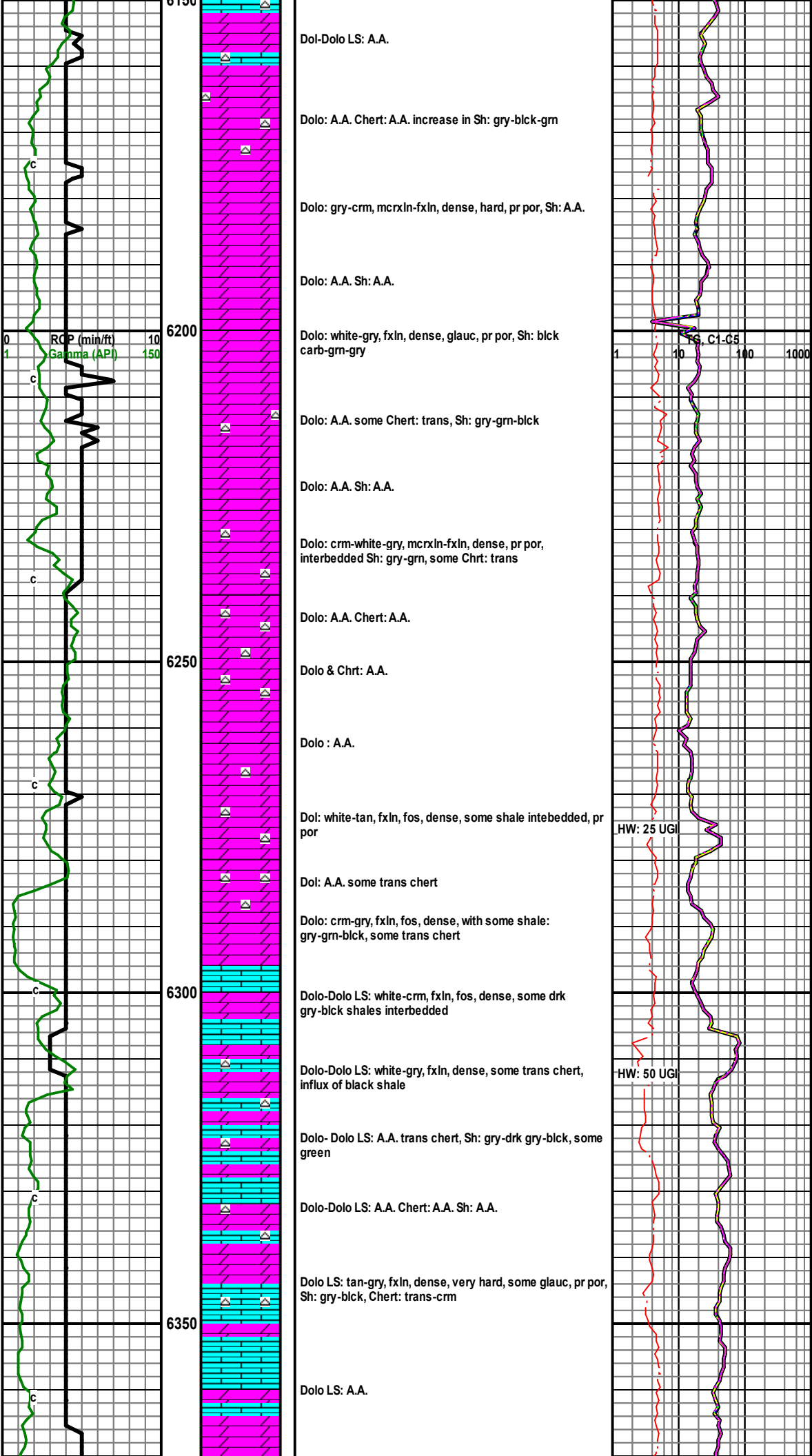


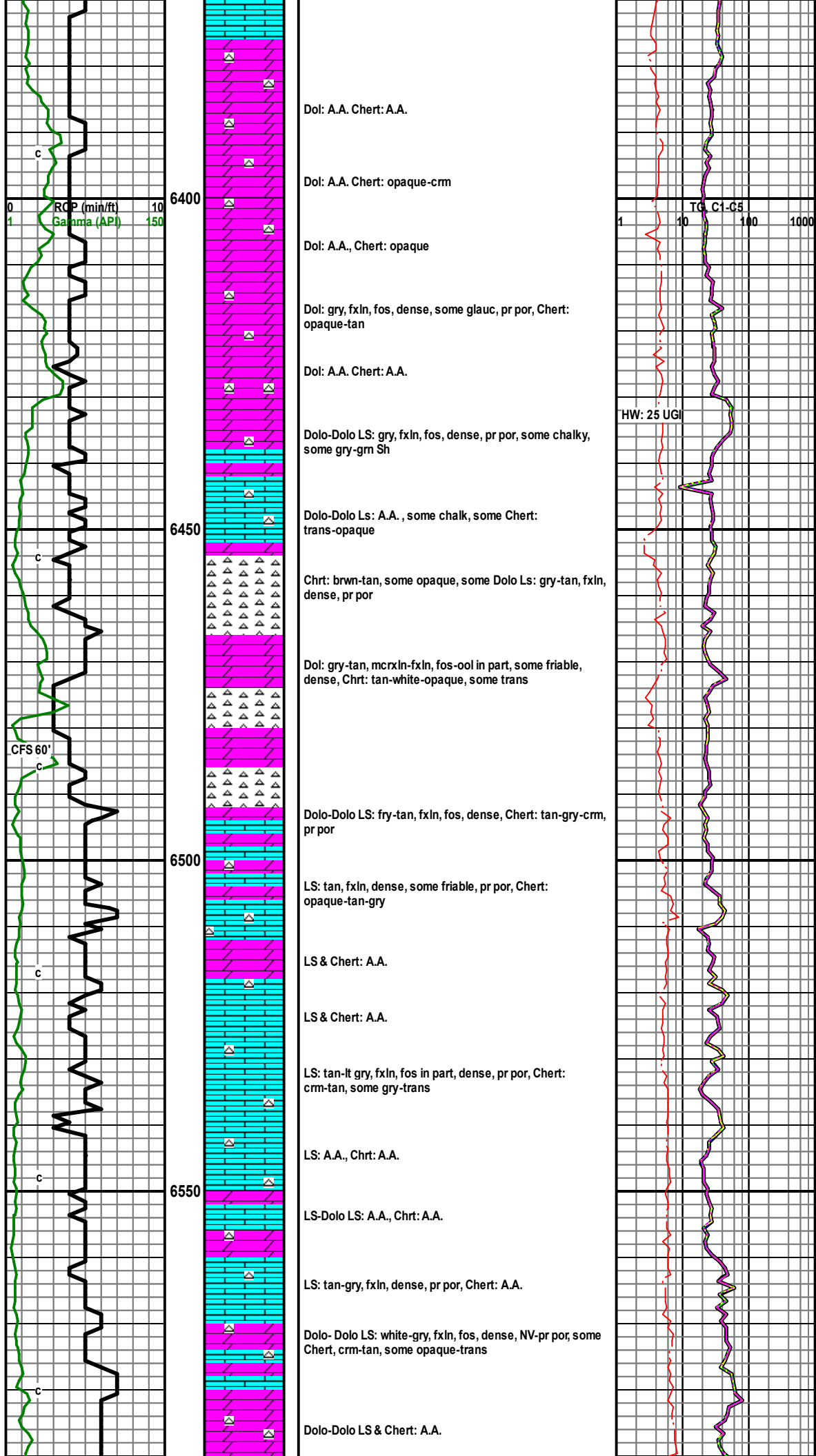


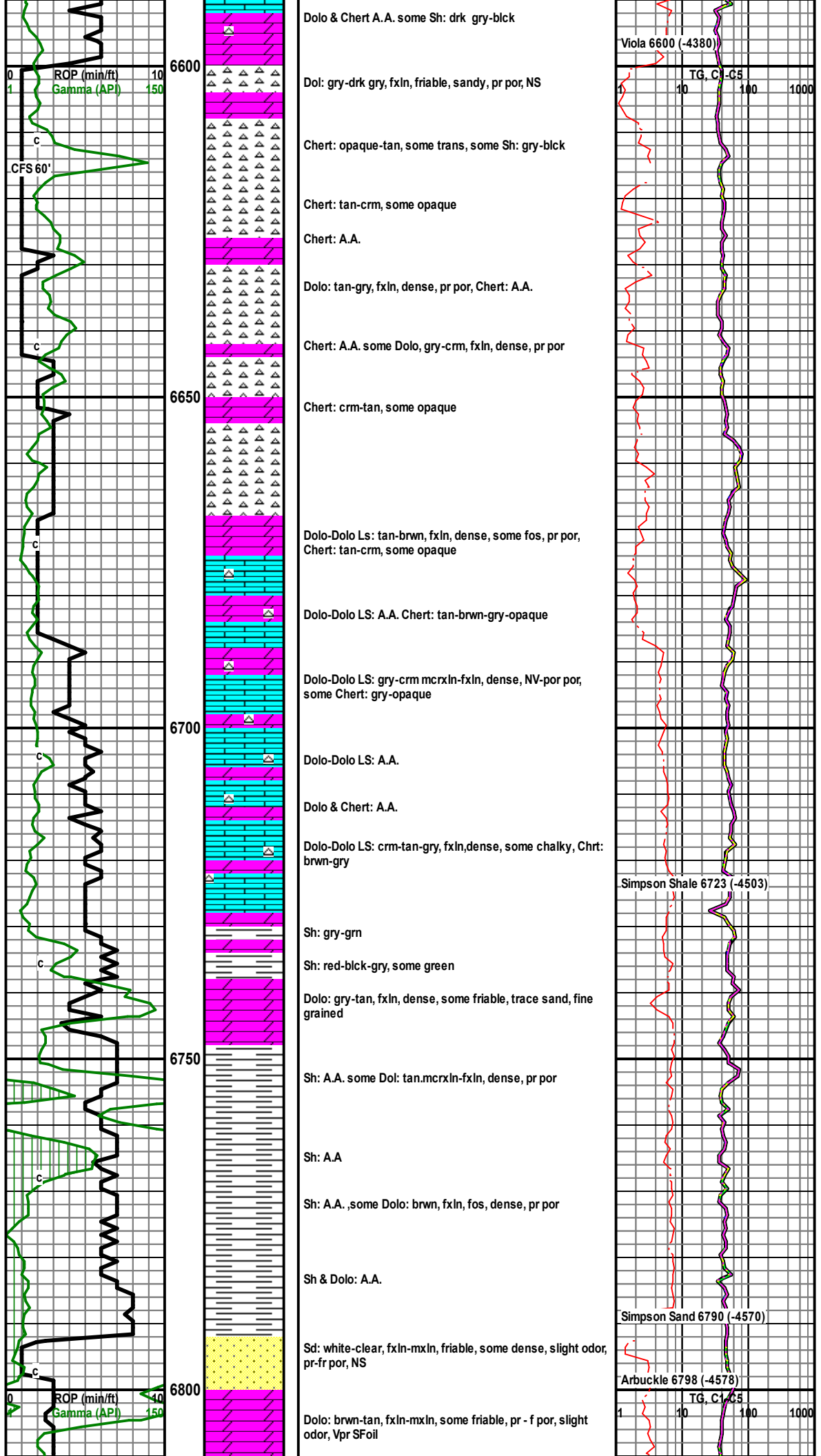


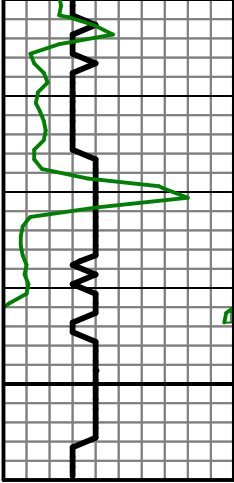




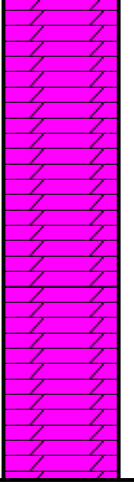








6850



Dolo: A.A.

Dolo: brwn, fxln-mxln, dense, suc, pr or-fr por, slight odor

