



Spud: 5/19/2013

Current

Field
 County Comanche
 State Kansas
 Well **Ginger 3417 1-10**
 SH Location SEC 10 - T34S - R17W
 Elevations 1772' KB, 1752' GL

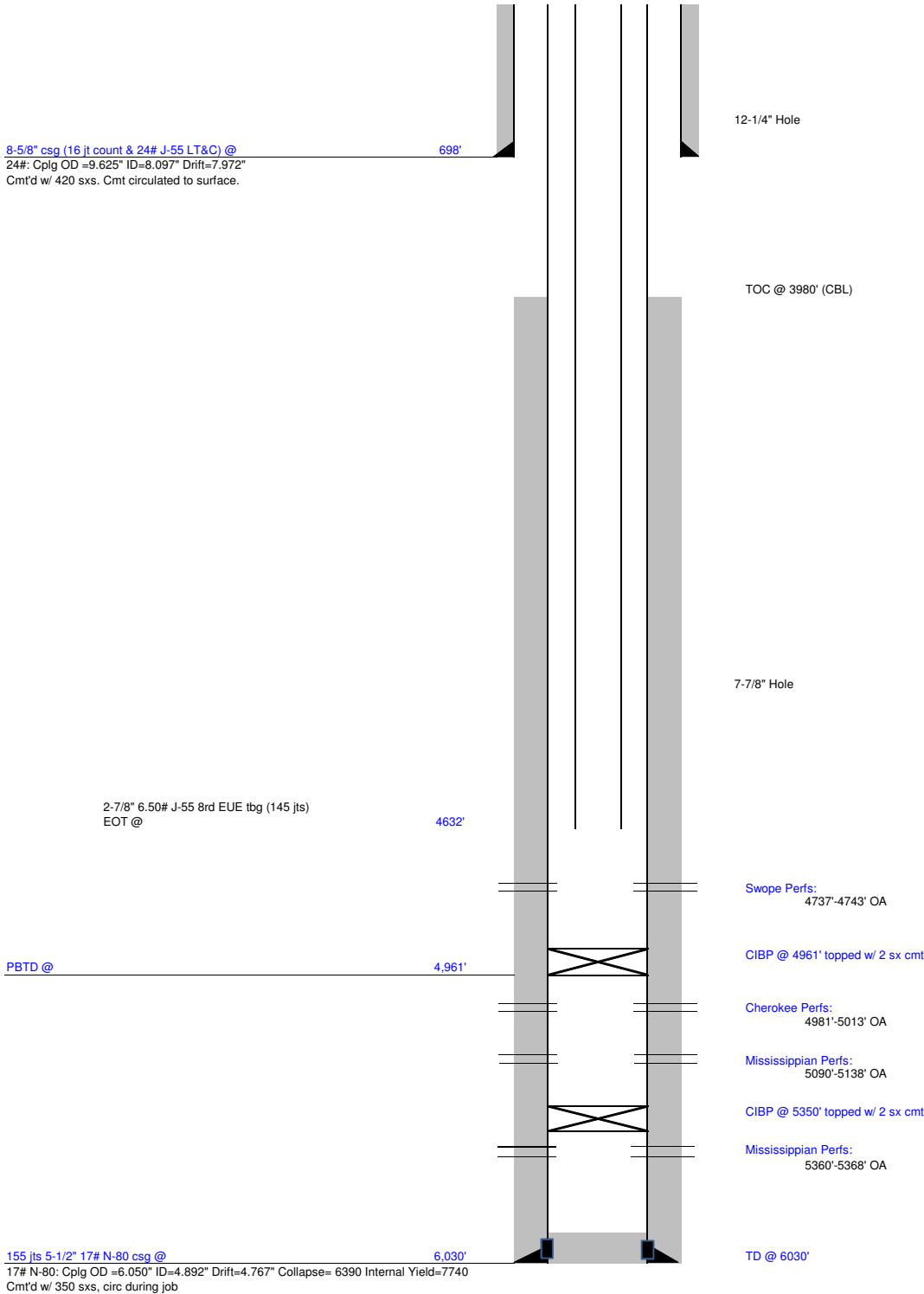
Wellbore Schematic

15033216810000
 API No.

Original Completion	
Current	X
Workover	
Proposed	

Well Bore Data

MD



8-5/8" csg (16 jt count & 24# J-55 LT&C) @
 24#: Cplg OD =9.625" ID=8.097" Drift=7.972"
 Cmt'd w/ 420 sxs. Cmt circulated to surface.

2-7/8" 6.50# J-55 8rd EUE tbg (145 jts)
 EOT @

PBTD @

155 jts 5-1/2" 17# N-80 csg @

17# N-80: Cplg OD =6.050" ID=4.892" Drift=4.767" Collapse= 6390 Internal Yield=7740
 Cmt'd w/ 350 sxs, circ during job

12-1/4" Hole

TOC @ 3980' (CBL)

7-7/8" Hole

Swope Perfs:
 4737'-4743' OA

CIBP @ 4961' topped w/ 2 sx cmt

Cherokee Perfs:
 4981'-5013' OA

Mississippian Perfs:
 5090'-5138' OA

CIBP @ 5350' topped w/ 2 sx cmt

Mississippian Perfs:
 5360'-5368' OA

TD @ 6030'