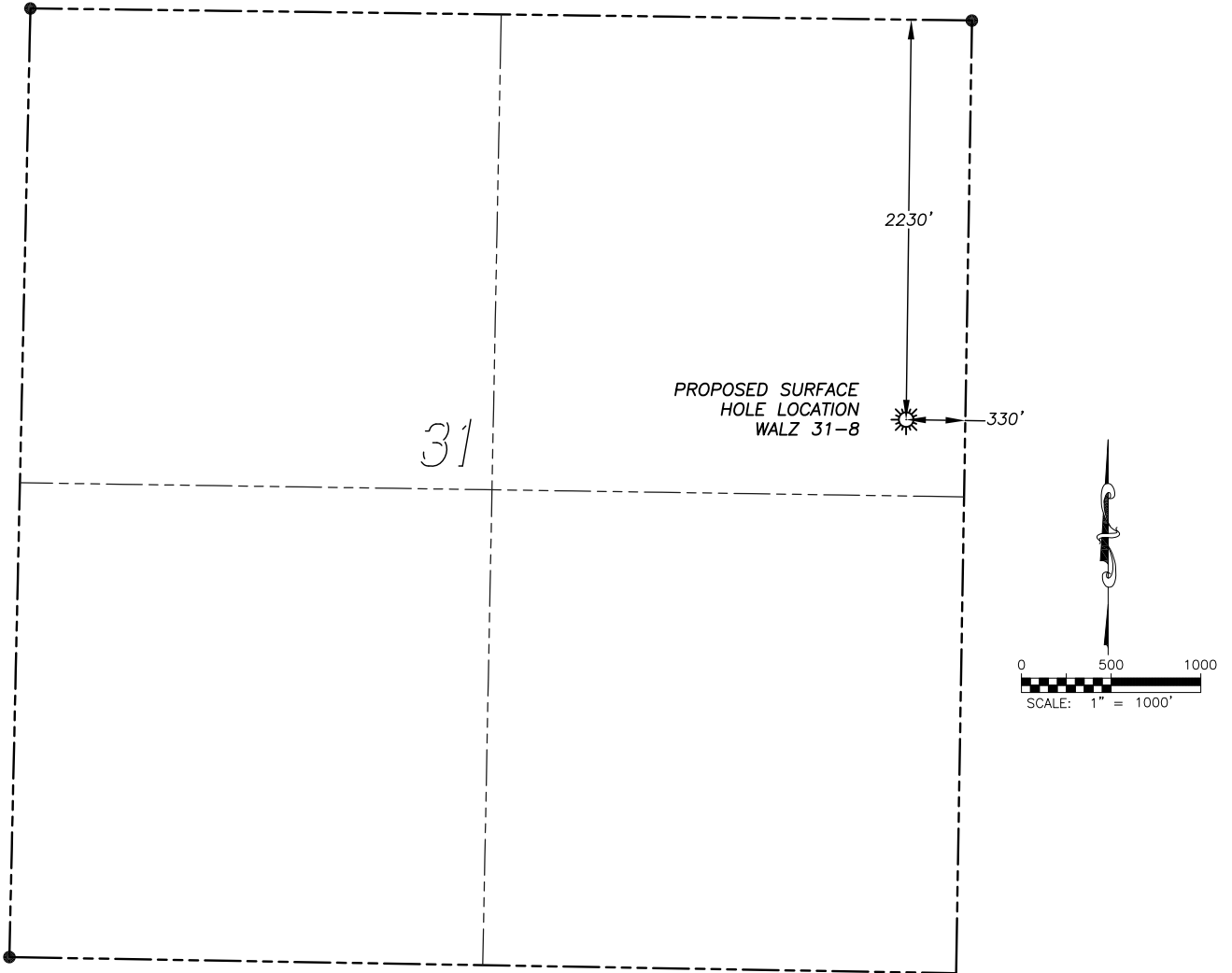


WELL LOCATION MAP WALZ 31-8

SECTION 31, TOWNSHIP 10 SOUTH, RANGE 21 WEST OF THE 6TH PRINCIPAL MERIDIAN



NAD 83 LATITUDE AND LONGITUDE

WALZ 31-8 SURFACE HOLE:

LATITUDE: N39.14078°
LONGITUDE: W99.69953°
ELEVATION: 2221'
FOOTAGE: 2230' FNL, 330' FEL
QTR/QTR: SE4/NE4
DATE: 10/8/2013

IN ACCORDANCE WITH A REQUEST FROM McELVAIN ENERGY INC., DALEY LAND SURVEYING, INC. HAS DETERMINED THE SURFACE LOCATION OF THE WALZ 31-8 WELL TO BE 2230' FNL, 330' FEL, AS MEASURED AT NINETY (90) DEGREES FROM THE SECTION LINES OF SECTION 31, TOWNSHIP 10 SOUTH, RANGE 21 WEST, OF THE 6TH PRINCIPAL MERIDIAN, GRAHAM COUNTY, KANSAS.

NOTES:

- 1) HORIZONTAL DATUM IS NAD83.
- 2) VERTICAL DATUM IS NAVD88 AND ORIGINATES FROM N.G.S. BENCHMARK X-301 NETWORK, UTILIZING THE GEOID09 MODEL.
- 3) SURFACE USE: PASTURE.
- 4) THIS MAP DOES NOT REPRESENT A BOUNDARY SURVEY, IT IS NOT A LAND SURVEY PLAT OR AN IMPROVEMENT SURVEY PLAT AND IT IS NOT TO BE RELIED UPON FOR THE ESTABLISHMENT OF FENCE, BUILDING OR OTHER FUTURE IMPROVEMENT LINES.
- 5) AN ADDITIONAL STAKE WAS SET AT 2232' FNL, 50' FEL
LATITUDE: N39.14078°
LONGITUDE: W99.69854°

ACCESS ROAD MAP WALZ 31-8

SECTION 31, TOWNSHIP 10 SOUTH, RANGE 21 WEST OF THE 6TH PRINCIPAL MERIDIAN

