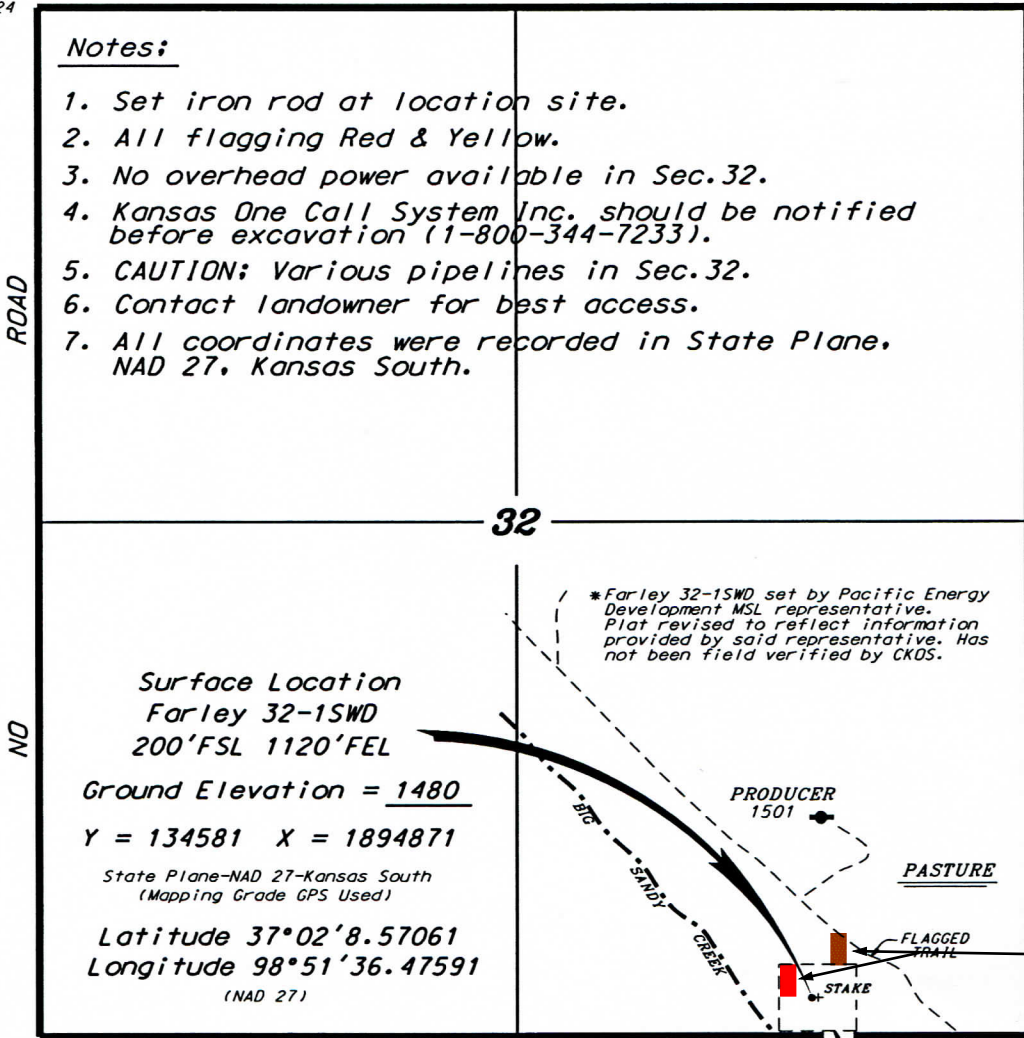


**PACIFIC ENERGY DEVELOPMENT MSL
FARLEY LEASE
IN SECTION 32, T34S, R14W
BARBER COUNTY, KANSAS**

NW. COR. SEC. 32
Y = 139663
X = 1890724

NE. COR. SEC. 32
Y = 139661
X = 1895936

NO ROAD



Notes:

1. Set iron rod at location site.
2. All flagging Red & Yellow.
3. No overhead power available in Sec. 32.
4. Kansas One Call System Inc. should be notified before excavation (1-800-344-7233).
5. CAUTION: Various pipelines in Sec. 32.
6. Contact landowner for best access.
7. All coordinates were recorded in State Plane, NAD 27, Kansas South.

**Surface Location
Farley 32-1SWD
200'FSL 1120'FEL**

Ground Elevation = 1480

Y = 134581 X = 1894871

State Plane-NAD 27-Kansas South
(Mapping Grade GPS Used)

Latitude 37°02'8.57061

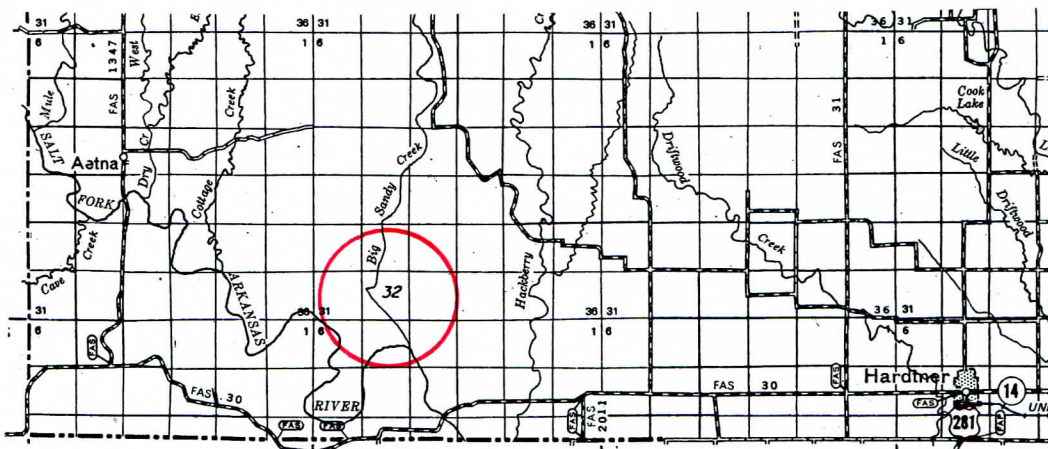
Longitude 98°51'36.47591

(NAD 27)

SW. COR. SEC. 32
Y = 134383
X = 1890694

WINDMILL
*

SE. COR. SEC. 32
Y = 134381
X = 1895993



* Controlling data is based upon the best maps and photographs available to us and upon a regular section of land containing 640 acres.
* Approximate section lines were determined using the normal standard of care of oilfield surveyors practicing in the state of Kansas. The section corners, which establish the precise section lines, were not necessarily located, and the exact location of the drillsite location in the section is not guaranteed. Therefore, the operator securing this service and accepting this plat and all other parties relying thereon agree to hold Central Kansas Oilfield Services, Inc., its officers and employees harmless from all losses, costs and expenses and said entities released from any liability from incidental or consequential damages.
* Elevations derived from National Geodetic Vertical Datum.

Date November 1, 2013

* Ingress and egress to location as shown on this plat is per usage only and may not be legally opened for public use. Contact landowner, tenant and county road department for access.

SCALE 1" = 1000'
C.K.O.S.