

TOPOGRAPHIC LAND SURVEYORS

6709 NORTH CLASSEN BLVD., OKLA. CITY, OKLA. 73116 * LOCAL (405) 843-4847 * OUT OF STATE (800) 654-3219
 Certificate of Authorization No. LS-99, Exp. Dec. 31, 2013

SUMNER County, Kansas

1320'FNL - 467'FEL Section 17 Township 34S Range 3W P.M.

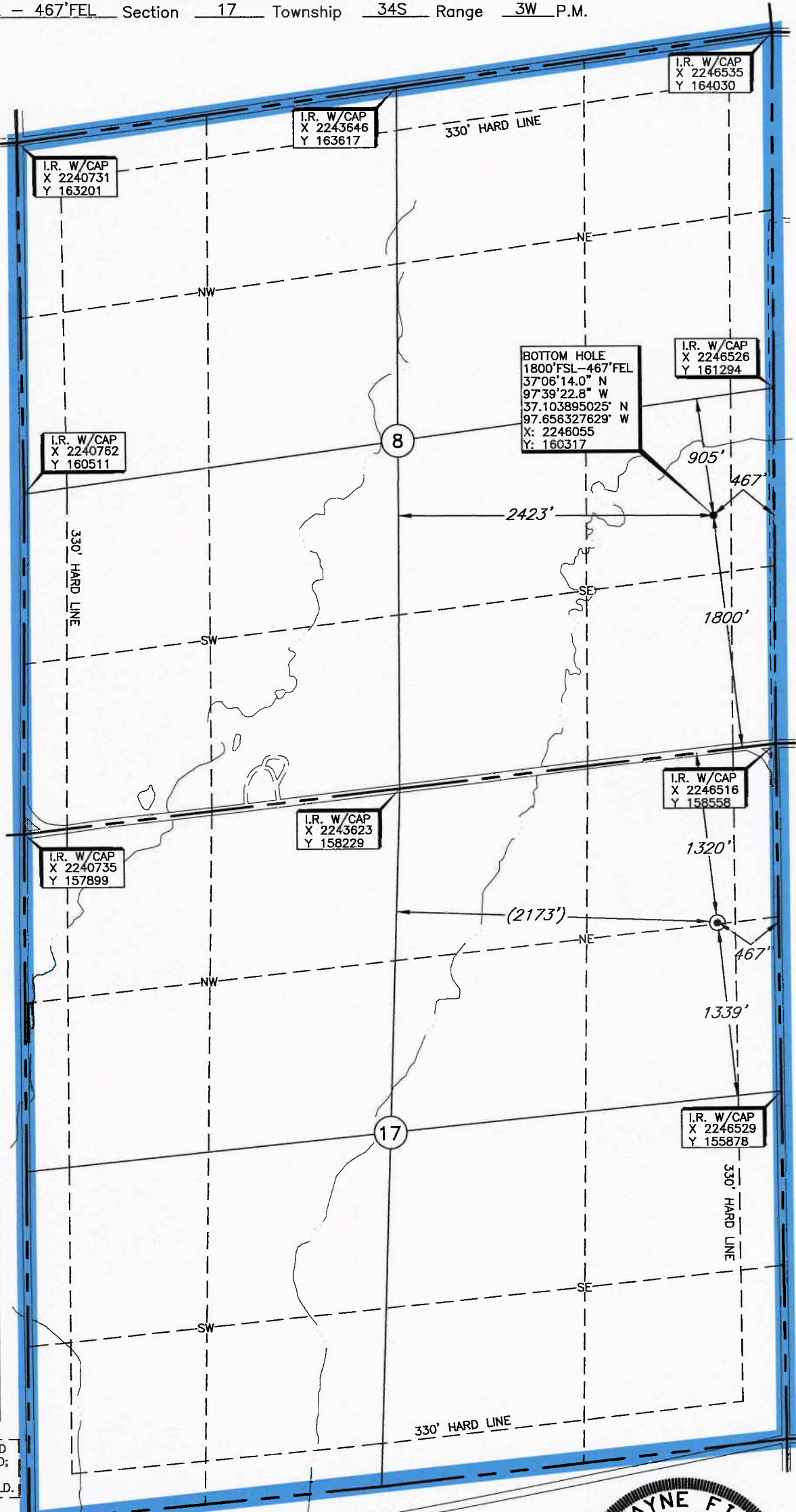
TOPOGRAPHIC
 1998

GRID
 NAD-27
 Kansas South
 US Feet

Note:
 3.280833 Ft. = 1 Meter
 Scale:
 1" = 1000'

0' 500' 1000'

Distances shown in (parenthesis) are calculated based upon the Quarter Section being 2640 feet; those shown in brackets are based on GLO (General Land Office) distances and have NOT been measured on the ground.



Operator: BRETLING OIL AND GAS
 Lease Name: BURESH
 Topography & Vegetation Loc. fell in level field
 Well No.: 17-1HM
ELEVATION:
1203' Gr. at Stake

Good Drill Site? Yes
 Reference Stakes or Alternate Location
 Stakes Set None

Best Accessibility to Location From East off county road
 Distance & Direction From Caldwell, Kansas, go ± 4.5 miles North on St. Hwy 49, then ± 3 miles West to the Northeast Corner of Section 17, T34S - R3W.

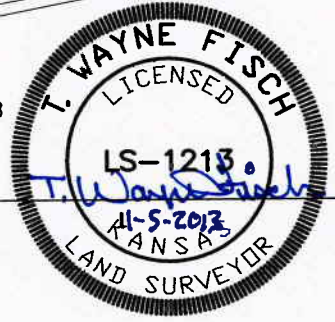
BOTTOM HOLE INFORMATION PROVIDED BY OPERATOR LISTED, NOT SURVEYED; CORNER COORDINATES ARE TAKEN FROM POINTS SURVEYED IN THE FIELD.

DATUM: NAD-27
 LAT: 37°05'43.0\" N
 LONG: 97°39'23.1\" W
 LAT: 37.095271166\" N
 LONG: 97.656423615\" W
 STATE PLANE COORDINATES: (US Feet)
 ZONE: KS SOUTH
 X: 2246055
 Y: 157177

Date of Drawing: Nov. 4, 2013
 Invoice # 210092 Date Staked: Nov. 1, 2013 NMB

CERTIFICATE:

I, T. Wayne Fisch a Kansas Licensed Land Surveyor and an authorized agent of Topographic Land Surveyors, do hereby certify that the above described well location was surveyed and staked on the ground as shown herein.



TOPOGRAPHIC LAND SURVEYORS

6709 NORTH CLASSEN BLVD., OKLA. CITY, OKLA. 73116 * LOCAL (405) 843-4847 * OUT OF STATE (800) 654-3219
 Certificate of Authorization No. LS-99, Exp. Dec. 31, 2013

SUMNER County, Kansas

1320' FNL - 467' FEL Section 17 Township 34S Range 3W P.M.

Distances shown in parenthesis are calculated based upon the Quarter Section being 2640 feet; those shown in brackets are based on GLD (General Land Office) distances and have NOT been measured on the ground.

GRID
 NAD-27
 Kansas South
 US Feet

Note:
 3.280833 Ft.=1 Meter
 Scale:
 1" = 1000'

0' 500' 1000'

Operator: BRETLING OIL AND GAS
 Lease Name: BURESH
 Topography & Vegetation Loc. fell in level field
 Well No.: 17-1HM
ELEVATION:
 1203' Gr. at Stake

Good Drill Site? Yes
 Reference Stakes or Alternate Location
 Stakes Set None

Best Accessibility to Location From East off county road
 Distance & Direction From Caldwell, Kansas, go ± 4.5 miles North on St. Hwy 49, then ± 3 miles West to the Northeast Corner of Section 17, T34S - R3W.



BOTTOM HOLE INFORMATION PROVIDED BY OPERATOR LISTED, NOT SURVEYED; CORNER COORDINATES ARE TAKEN FROM POINTS SURVEYED IN THE FIELD.

DATUM: NAD-27
 LAT: 37°05'43.0" N
 LONG: 97°39'23.1" W
 LAT: 37.095271186° N
 LONG: 97.656423615° W
 STATE PLANE COORDINATES: (US Feet)
 ZONE: KS SOUTH
 X: 2246055
 Y: 157177

Date of Drawing: Nov. 4, 2013
 Invoice # 210092 Date Staked: Nov. 1, 2013 NMB

CERTIFICATE:

I, T. Wayne Fisch a Kansas Licensed Land Surveyor and an authorized agent of Topographic Land Surveyors, do hereby certify that the above described well location was surveyed and staked on the ground as shown herein.

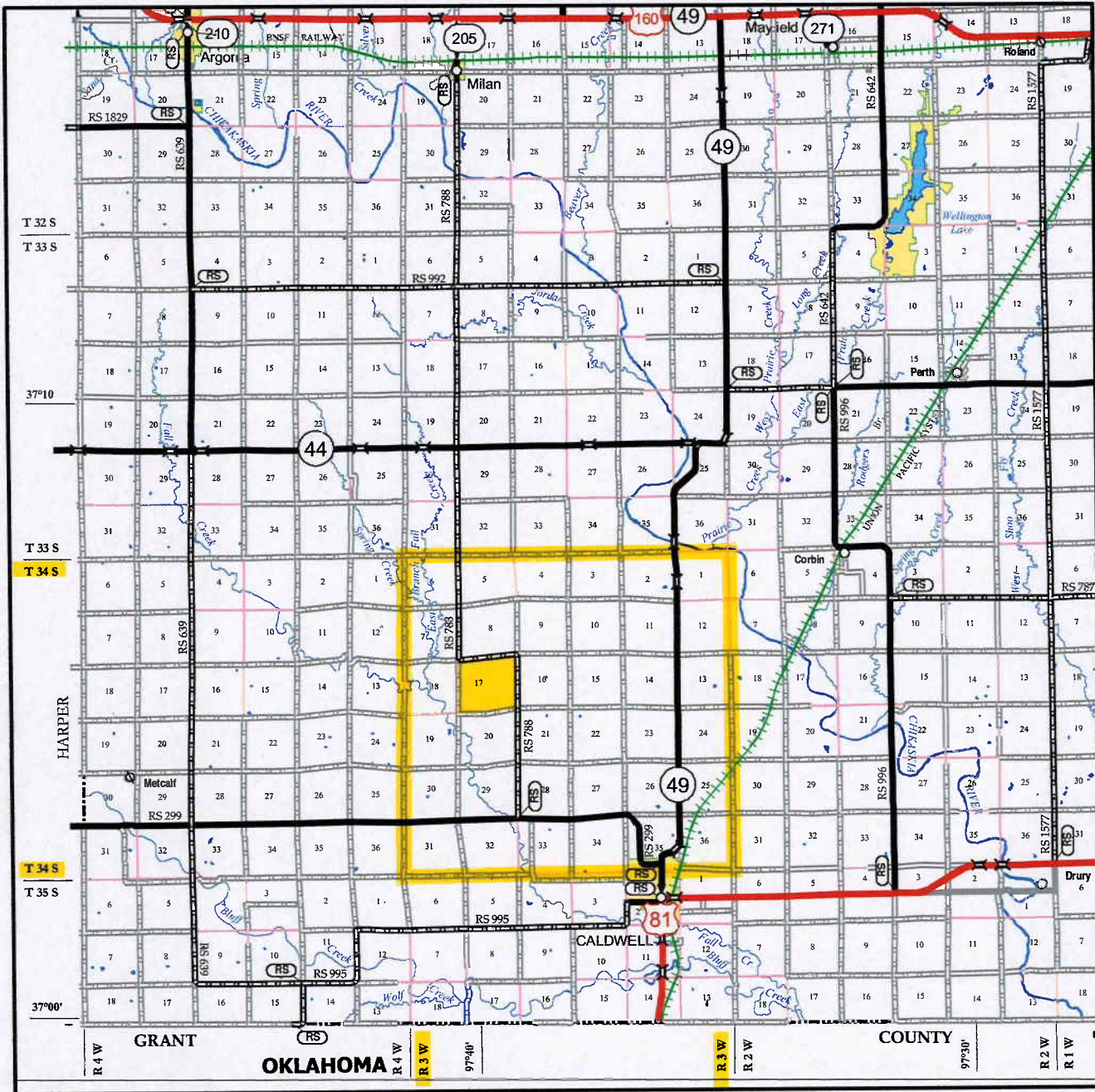


This information was gathered with a GPS receiver with ±1 foot Horiz./Vert. accuracy.

TOPOGRAPHIC LAND SURVEYORS

Surveying and Mapping for the Energy Industry
 6709 North Classen Blvd. Oklahoma City, OK 73116 www.topographic.com
 Telephone Numbers: Local (405) 843-4847 Toll Free (800) 654-3219

VICINITY MAP



Scale: 1" = 3 Miles

Sec. 17 Twp. 34S Rng. 3W P.M.

County SUMNER State KS

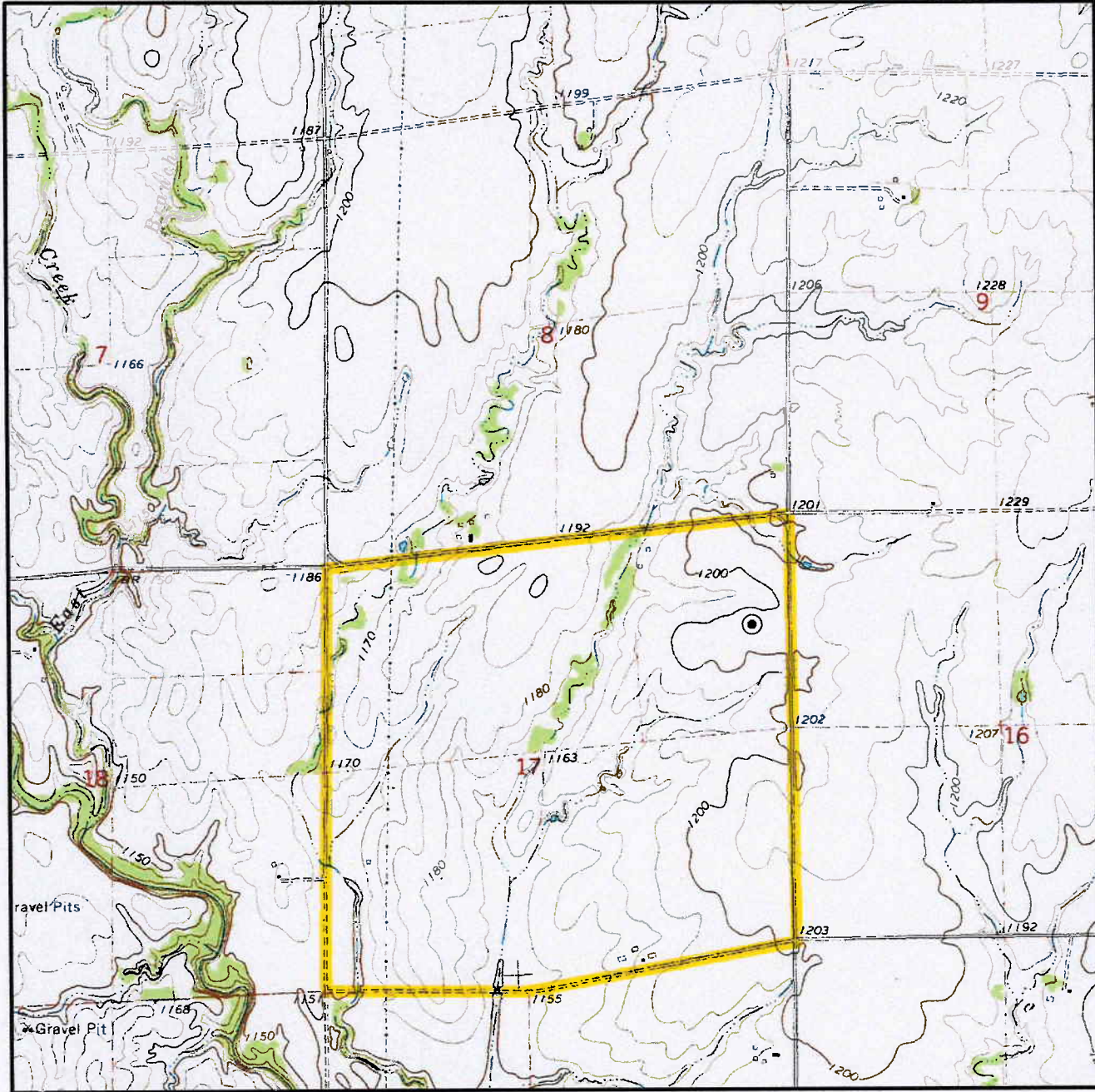
Operator BREITLING OIL AND GAS



TOPOGRAPHIC LAND SURVEYORS

Surveying and Mapping for the Energy Industry
6709 North Classen Blvd. Oklahoma City, OK 73116 www.topographic.com
Telephone Numbers: Local (405) 843-4847 Toll Free (800) 654-3219

LOCATION & ELEVATION VERIFICATION MAP



Sec. 17 Twp. 34S Rng. 3W P.M.

County SUMNER State KS

Operator BREITLING OIL AND GAS

Description 1320'FNL - 467'FEL

Lease BURESH 17-1HM

Elevation 1203' Gr. at Stake

U.S.G.S. Topographic
Quadrangle Map DOSTER, KS

Above Background Data from
U.S.G.S. Topographic Map

Scale: 1"=2000'

Contour Interval 10'

This location has been very carefully staked on the ground according to the best official survey records, maps and photographs available to us, but its accuracy is not guaranteed. When elevation is shown hereon it is the ground elevation of the location stake.
Review this plat and inform us immediately of any possible discrepancy.



LAND SURVEYORS

Nov. 1, 2013