



## DRILL STEM TEST REPORT

Prepared For: **RJM Company**

PO Box 256  
Clafin Ks, 67525-0256

ATTN: Jim Musgrove

**BCCJC #1**

**8/18s/11w/Barton**

Start Date: 2013.09.28 @ 16:38:00

End Date: 2013.09.28 @ 23:26:00

Job Ticket #: 18496                      DST #: 1

Superior Testers Enterprises LLC  
PO Box 138 Great Bend KS 67530  
1-800-792-6902

Printed: 2013.09.28 @ 23:53:18

RJM Company  
8/18s/11w/Barton  
BCCJC #1  
DST # 1  
LKC "A-B"  
2013.09.28



# DRILL STEM TEST REPORT

RJM Company  
 PO Box 256  
 Claflin Ks, 67525-0256  
 ATTN: Jim Musgrove

**8/18s/11w/Barton**  
**BCCJC #1**  
 Job Ticket: 18496      **DST#: 1**  
 Test Start: 2013.09.28 @ 16:38:00

## GENERAL INFORMATION:

Formation: **LKC "A-B"**  
 Deviated: No Whipstock: ft (KB)  
 Test Type: Conventional Bottom Hole (Initial)  
 Time Tool Opened: 18:37:30  
 Tester: Shane Konzem  
 Time Test Ended: 23:26:00  
 Unit No: 3330/50/Great Bend  
**Interval: 3080.00 ft (KB) To 3125.00 ft (KB) (TVD)**  
 Reference Elevations: 1825.00 ft (KB)  
 Total Depth: 3125.00 ft (KB) (TVD) 1816.00 ft (CF)  
 Hole Diameter: 7.88 inches Hole Condition: Poor KB to GR/CF: 9.00 ft

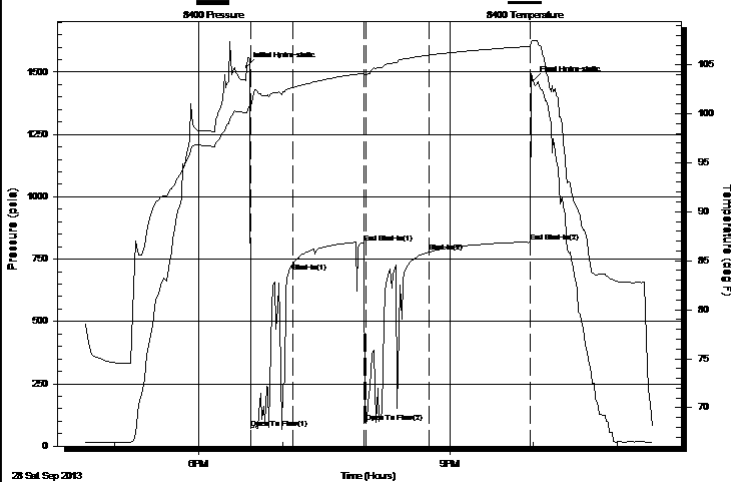
## Serial #: 8400

Inside

Press @ RunDepth: 779.01 psia @ 3121.00 ft (KB) Capacity: 5000.00 psia  
 Start Date: 2013.09.28 End Date: 2013.09.28 Last Calib.: 2013.09.28  
 Start Time: 16:38:00 End Time: 23:26:00 Time On Btm: 2013.09.28 @ 18:34:30  
 Time Off Btm: 2013.09.28 @ 21:59:30

**TEST COMMENT:** 1st Open/ 30 Minutes. Weak blow built to 2.5 inches in 5 gallon bucket.  
 1st Shut In/ 45 Minutes. No blow back.  
 2nd Open/ 50 Minutes. No blow, flushed tool at 5 minutes per Brad Miller gained a fair blow that built to 7 inches in 5 gallon bucket.

Pressure vs. Time



## PRESSURE SUMMARY

Time (Min.)	Pressure (psia)	Temp (deg F)	Annotation
0	1520.74	100.15	Initial Hydro-static
3	73.37	100.72	Open To Flow (1)
33	700.13	102.65	Shut-In(1)
84	816.51	104.17	End Shut-In(1)
86	94.46	104.05	Open To Flow (2)
131	779.01	105.99	Shut-In(2)
203	817.85	106.88	End Shut-In(2)
205	1467.63	107.43	Final Hydro-static

## Recovery

Length (ft)	Description	Volume (bbl)
0.00	feet of gas	0.00

## Gas Rates

Choke (inches)	Pressure (psia)	Gas Rate (Mcf/d)



# DRILL STEM TEST REPORT

RJM Company  
 PO Box 256  
 Claflin Ks, 67525-0256  
 ATTN: Jim Musgrove

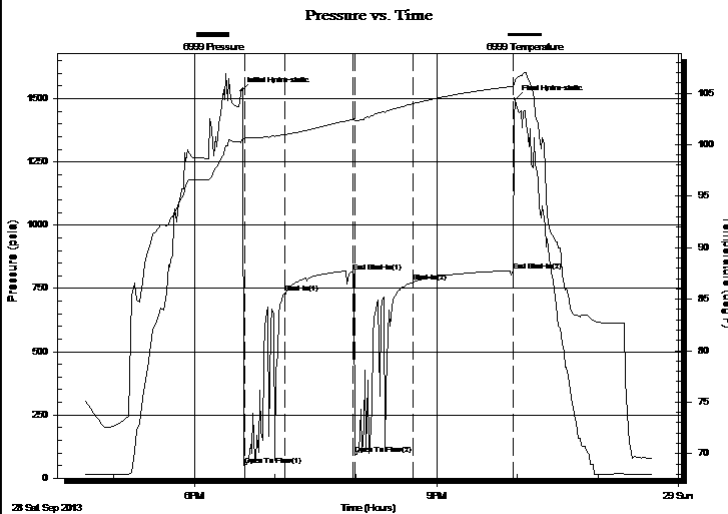
**8/18s/11w/Barton**  
**BCCJC #1**  
 Job Ticket: 18496      **DST#: 1**  
 Test Start: 2013.09.28 @ 16:38:00

## GENERAL INFORMATION:

Formation: **LKC "A-B"**  
 Deviated: No Whipstock: ft (KB)  
 Test Type: Conventional Bottom Hole (Initial)  
 Time Tool Opened: 18:37:30  
 Tester: Shane Konzem  
 Time Test Ended: 23:26:00  
 Unit No: 3330/50/Great Bend  
**Interval: 3080.00 ft (KB) To 3125.00 ft (KB) (TVD)**  
 Reference Elevations: 1825.00 ft (KB)  
 Total Depth: 3125.00 ft (KB) (TVD) 1816.00 ft (CF)  
 Hole Diameter: 7.88 inches Hole Condition: Poor KB to GR/CF: 9.00 ft

**Serial #: 6999 Outside**  
 Press @ RunDepth: 818.55 psia @ 3122.00 ft (KB) Capacity: 5000.00 psia  
 Start Date: 2013.09.28 End Date: 2013.09.28 Last Calib.: 2013.09.28  
 Start Time: 16:38:00 End Time: 23:41:00 Time On Btm: 2013.09.28 @ 18:34:30  
 Time Off Btm: 2013.09.28 @ 21:58:00

**TEST COMMENT:** 1st Open/ 30 Minutes. Weak blow built to 2.5 inches in 5 gallon bucket.  
 1st Shut In/ 45 Minutes. No blow back.  
 2nd Open/ 50 Minutes. No blow, flushed tool at 5 minutes per Brad Miller gained a fair blow that built to 7 inches in 5 gallon bucket.



## PRESSURE SUMMARY

Time (Min.)	Pressure (psia)	Temp (deg F)	Annotation
0	1529.65	100.23	Initial Hydro-static
3	49.73	100.64	Open To Flow (1)
33	733.43	100.98	Shut-In(1)
83	816.46	102.45	End Shut-In(1)
85	93.87	102.32	Open To Flow (2)
128	774.16	103.96	Shut-In(2)
203	818.55	105.66	End Shut-In(2)
204	1497.69	106.17	Final Hydro-static

## Recovery

Length (ft)	Description	Volume (bbl)
0.00	feet of gas	0.00

## Gas Rates

Choke (inches)	Pressure (psia)	Gas Rate (Mcf/d)



# DRILL STEM TEST REPORT

**TOOL DIAGRAM**

RJM Company  
 PO Box 256  
 Claflin Ks, 67525-0256  
 ATTN: Jim Musgrove

**8/18s/11w/Barton**  
**BCCJC #1**  
 Job Ticket: 18496      **DST#: 1**  
 Test Start: 2013.09.28 @ 16:38:00

**Tool Information**

Drill Pipe:	Length: 3079.00 ft	Diameter: 3.80 inches	Volume: 43.19 bbl	Tool Weight:	2000.00 lb
Heavy Wt. Pipe:	Length: 0.00 ft	Diameter: 0.00 inches	Volume: 0.00 bbl	Weight set on Packer:	20000.00 lb
Drill Collar:	Length: 0.00 ft	Diameter: 0.00 inches	Volume: 0.00 bbl	Weight to Pull Loose:	50000.00 lb
			<u>Total Volume: 43.19 bbl</u>	Tool Chased	0.00 ft
Drill Pipe Above KB:	20.00 ft			String Weight: Initial	27000.00 lb
Depth to Top Packer:	3080.00 ft			Final	29000.00 lb
Depth to Bottom Packer:	ft				
Interval between Packers:	45.00 ft				
Tool Length:	66.00 ft				
Number of Packers:	2	Diameter: 6.75 inches			

Tool Comments:

Tool Description	Length (ft)	Serial No.	Position	Depth (ft)	Accum. Lengths
Change Over Sub	1.00			3060.00	
Shut-In Tool	5.00			3065.00	
Hydroic Tool	5.00			3070.00	
Packer	5.00			3075.00	21.00      Bottom Of Top Packer
Packer	5.00			3080.00	
Perforations	40.00			3120.00	
Recorder	1.00	8400	Inside	3121.00	
Recorder	1.00	6999	Outside	3122.00	
Bullnose	3.00			3125.00	45.00      Bottom Packers & Anchor
<b>Total Tool Length:</b>	<b>66.00</b>				



# DRILL STEM TEST REPORT

## FLUID SUMMARY

RJM Company  
 PO Box 256  
 Claflin Ks, 67525-0256  
 A T T N : Jim Musgrove

**8/18s/11w/Barton**  
**BCCJC #1**  
 Job Ticket: 18496      **DST#: 1**  
 Test Start: 2013.09.28 @ 16:38:00

### Mud and Cushion Information

Mud Type: Gel Chem	Cushion Type:	Oil API:	deg API
Mud Weight: 9.00 lb/gal	Cushion Length: ft	Water Salinity:	ppm
Viscosity: 48.00 sec/qt	Cushion Volume: bbl		
Water Loss: 8.80 in <sup>3</sup>	Gas Cushion Type:		
Resistivity: ohm.m	Gas Cushion Pressure: psia		
Salinity: 3000.00 ppm			
Filter Cake: inches			

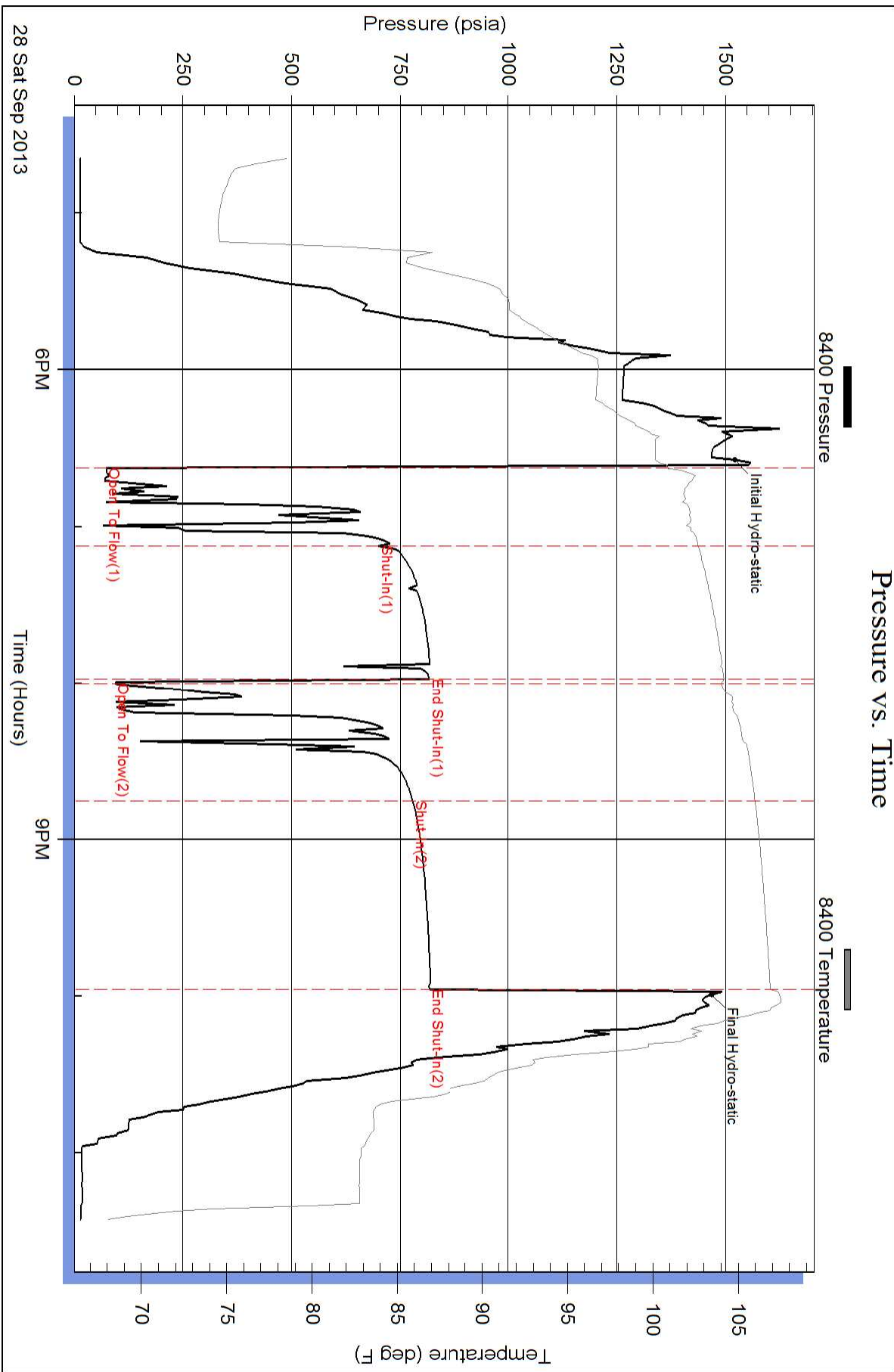
### Recovery Information

Recovery Table

Length ft	Description	Volume bbl
0.00	feet of gas	0.000

Total Length:                      ft      Total Volume:                      bbl  
 Num Fluid Samples: 0                      Num Gas Bombs:      0                      Serial #:  
 Laboratory Name:                      Laboratory Location:  
 Recovery Comments:

### Pressure vs. Time



28 Sat Sep 2013

