



DRILL STEM TEST REPORT

Prepared For: **RJM Company**

PO Box 256
Clafin Ks, 67525-0256

ATTN: Jim Musgrove

BCCJC #1

8/18s/11w/Barton

Start Date: 2013.10.01 @ 19:00:00

End Date: 2013.10.02 @ 01:57:00

Job Ticket #: 18498 DST #: 3

Superior Testers Enterprises LLC
PO Box 138 Great Bend KS 67530
1-800-792-6902

Printed: 2013.10.01 @ 02:48:29



DRILL STEM TEST REPORT

TOOL DIAGRAM

RJM Company
 PO Box 256
 Claflin Ks, 67525-0256
 A T T N : Jim Musgrove

8/18s/11w/Barton
BCCJC #1
 Job Ticket: 18498 **DST#: 3**
 Test Start: 2013.10.01 @ 19:00:00

Tool Information

Drill Pipe:	Length: 3326.00 ft	Diameter: 3.80 inches	Volume: 46.66 bbl	Tool Weight:	2000.00 lb
Heavy Wt. Pipe:	Length: 0.00 ft	Diameter: 0.00 inches	Volume: 0.00 bbl	Weight set on Packer:	20000.00 lb
Drill Collar:	Length: 0.00 ft	Diameter: 0.00 inches	Volume: 0.00 bbl	Weight to Pull Loose:	52000.00 lb
			<u>Total Volume: 46.66 bbl</u>	Tool Chased	0.00 ft
Drill Pipe Above KB:	29.00 ft			String Weight: Initial	29000.00 lb
Depth to Top Packer:	3318.00 ft			Final	33000.00 lb
Depth to Bottom Packer:	ft				
Interval between Packers:	58.34 ft				
Tool Length:	79.34 ft				
Number of Packers:	2	Diameter: 6.75 inches			

Tool Comments:

Tool Description	Length (ft)	Serial No.	Position	Depth (ft)	Accum. Lengths
Change Over Sub	1.00			3298.00	
Shut-In Tool	5.00			3303.00	
Hydroic Tool	5.00			3308.00	
Packer	5.00			3313.00	21.00 Bottom Of Top Packer
Packer	5.00			3318.00	
Perforations	5.00			3323.00	
Change Over Sub	0.75			3323.75	
Drill Pipe	31.84			3355.59	
Change Over Sub	0.75			3356.34	
Perforations	13.00			3369.34	
Recorder	1.00	8400	Inside	3370.34	
Recorder	1.00	6999	Outside	3371.34	
Bullnose	5.00			3376.34	58.34 Bottom Packers & Anchor

Total Tool Length: 79.34



DRILL STEM TEST REPORT

FLUID SUMMARY

RJM Company
 PO Box 256
 Claflin Ks, 67525-0256
 A T T N : Jim Musgrove

8/18s/11w/Barton
BCCJC #1
 Job Ticket: 18498 **DST#: 3**
 Test Start: 2013.10.01 @ 19:00:00

Mud and Cushion Information

Mud Type: Gel Chem	Cushion Type:	Oil API:	deg API
Mud Weight: 9.00 lb/gal	Cushion Length: ft	Water Salinity:	ppm
Viscosity: 48.00 sec/qt	Cushion Volume: bbl		
Water Loss: 9.60 in ³	Gas Cushion Type:		
Resistivity: ohm.m	Gas Cushion Pressure: psia		
Salinity: 7000.00 ppm			
Filter Cake: inches			

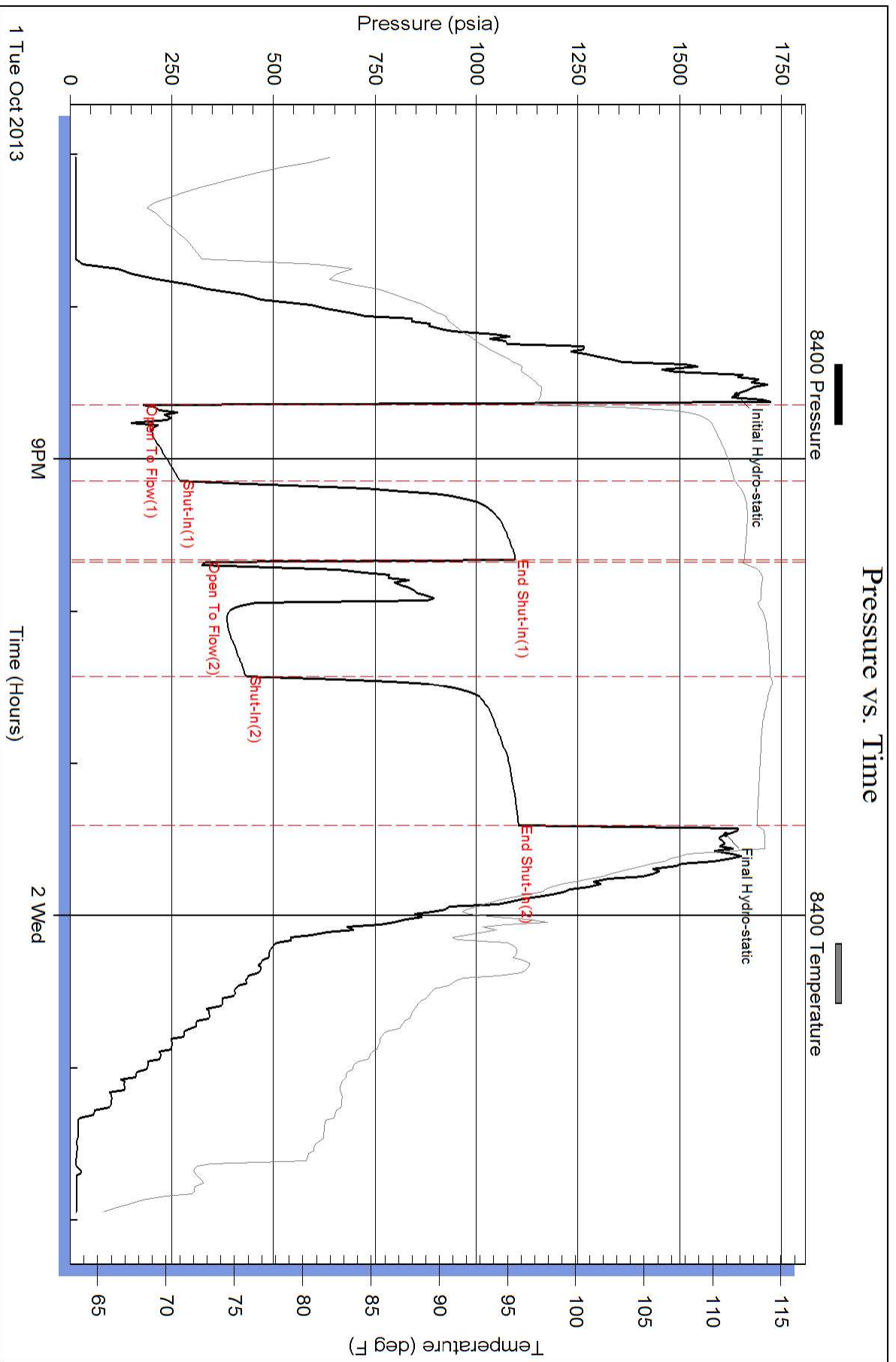
Recovery Information

Recovery Table

Length ft	Description	Volume bbl
15.00	10% Gas, 90% Oil	0.210
189.00	5% Gas, 85% Oil, 10% Mud	2.651
63.00	10% Gas, 75% Oil, 15% Mud	0.884
63.00	10% Gas, 75% Oil, 15% Mud	0.884
126.00	10% Gas, 80% Oil, 10% Mud	1.767
63.00	10% Gas, 20% Oil, 70% Mud	0.884
63.00	10% Gas, 20% Oil, 70% Mud	0.884
126.00	25% Gas, 75% Oil	1.767
63.00	10% Gas, 30% Oil, 60% Mud	0.884
63.00	10% Gas, 10% Oil, 80% Mud	0.884
126.00	15% Gas, 75% Oil, 10% Mud	1.767

Total Length: 960.00 ft Total Volume: 13.466 bbl
 Num Fluid Samples: 0 Num Gas Bombs: 0 Serial #:
 Laboratory Name: Laboratory Location:
 Recovery Comments:

Pressure vs. Time



Pressure vs. Time

