

Bowman Oil Company
805 Codell Road
Codell, Kansas 67663
785-434-2286

Surface Owner Attachment for Intent to Drill Form for:

Bowman Oil Company
BHB #1 – located S/2 S/2 of NW/4 of S5-T7S-R20W in
Rooks County, Kansas

Louis D. Bowman Living Trust
& Dennis and Kathryn Hamel

W/2 of NW/4 of S5-T7S-R20W
Rooks County, Kansas

Louis D. Bowman Living Trust
805 Codell Road
Codell, Kansas 67663

Dennis & Kathryn Hamel
700 SW 10th Street
Plainville, Kansas 67663-3406

Richard J. & Annette Benoit Trust
270 R Road
Damar, Kansas 67632-9200

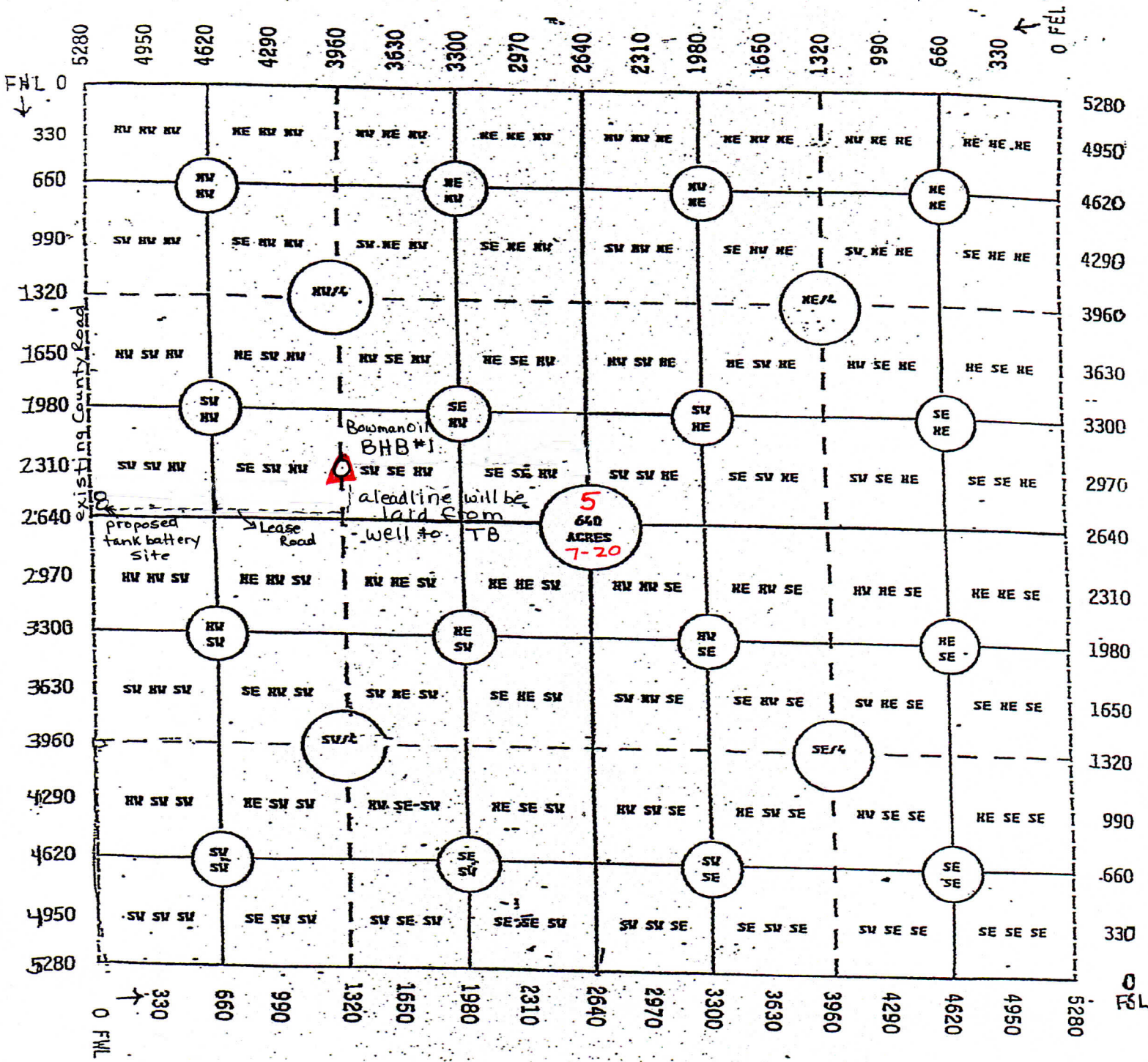
E/2 of NW/4 & W/2 of NE/4 of
S5-T7S-R20W,
Rooks County, Kansas

Bowman Oil Company

BHB #1

1/2 1/2 NW of 55-T75-R20W

Rooks County, Kansas



If Production pipe is set, a leadline will be laid from Tank Battery to well.