



**TRILOBITE TESTING, INC.**

# DRILL STEM TEST REPORT

Culbreath Oil & Gas Co., Inc.

**18 - 2S - 29W**

1532 S. Peoria Ave.  
Tulsa Ok, 74120

**Wendelin #1-18**

ATTN: Pat Deenihan

Job Ticket: 55803

**DST#: 2**

Test Start: 2013.10.23 @ 05:13:05

## GENERAL INFORMATION:

Formation: **Lan "D"**

Deviated: No Whipstock: ft (KB)

Time Tool Opened: 07:11:45

Time Test Ended: 12:05:14

Test Type: Conventional Bottom Hole (Initial)

Tester: Royal Fisher

Unit No: 44

**Interval: 3825.00 ft (KB) To 3866.00 ft (KB) (TVD)**

Reference Elevations: 2810.00 ft (KB)

Total Depth: 3866.00 ft (KB) (TVD)

2802.00 ft (CF)

Hole Diameter: 7.88 inches Hole Condition: Good

KB to GR/CF: 8.00 ft

## Serial #: 8879

Press @ Run Depth: 15.57 psig @ ft (KB)

Capacity: 8000.00 psig

Start Date: 2013.10.23

End Date: 2013.10.23

Last Calib.: 2013.10.24

Start Time: 05:13:05

End Time: 12:05:14

Time On Btm: 2013.10.23 @ 07:11:30

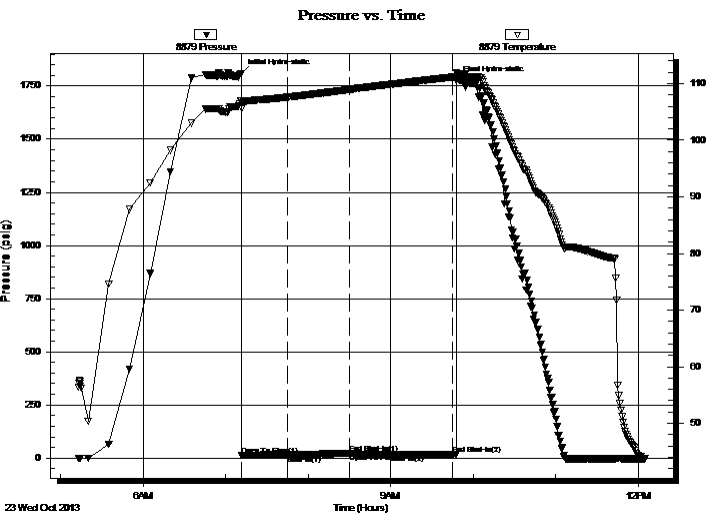
Time Off Btm: 2013.10.23 @ 09:47:44

**TEST COMMENT:** 30 - IF - Weak surface blow in 5 min. stayed at 1/8"

45 - ISI - No return

30 - FF - No Blow

45 - FSI - No return



## PRESSURE SUMMARY

Time (Min.)	Pressure (psig)	Temp (deg F)	Annotation
0	1807.51	106.99	Initial Hydro-static
1	13.31	105.66	Open To Flow (1)
34	14.98	107.60	Shut-In(1)
79	23.02	108.95	End Shut-In(1)
79	23.06	108.95	Open To Flow (2)
109	15.57	109.88	Shut-In(2)
154	19.66	111.16	End Shut-In(2)
157	1775.06	111.98	Final Hydro-static

## Recovery

Length (ft)	Description	Volume (bbl)
5.00	M - 100M	0.02

## Gas Rates

Choke (inches)	Pressure (psig)	Gas Rate (Mcf/d)



**TRILOBITE  
TESTING, INC.**

# DRILL STEM TEST REPORT

**FLUID SUMMARY**

Culbreath Oil & Gas Co., Inc.

**18 - 2S - 29W**

1532 S. Peoria Ave.  
Tulsa Ok, 74120

**Wendelin #1-18**

Job Ticket: 55803

**DST#: 2**

ATTN: Pat Deenihan

Test Start: 2013.10.23 @ 05:13:05

## Mud and Cushion Information

Mud Type: Gel Chem

Cushion Type:

Oil API:

deg API

Mud Weight: 9.00 lb/gal

Cushion Length:

ft

Water Salinity:

ppm

Viscosity: 63.00 sec/qt

Cushion Volume:

bbbl

Water Loss: 7.20 in<sup>3</sup>

Gas Cushion Type:

Resistivity: 0.00 ohm.m

Gas Cushion Pressure:

psig

Salinity: 500.00 ppm

Filter Cake: inches

## Recovery Information

Recovery Table

Length ft	Description	Volume bbl
5.00	M - 100M	0.025

Total Length: 5.00 ft      Total Volume: 0.025 bbl

Num Fluid Samples: 0

Num Gas Bombs: 0

Serial #:

Laboratory Name:

Laboratory Location:

Recovery Comments:

