

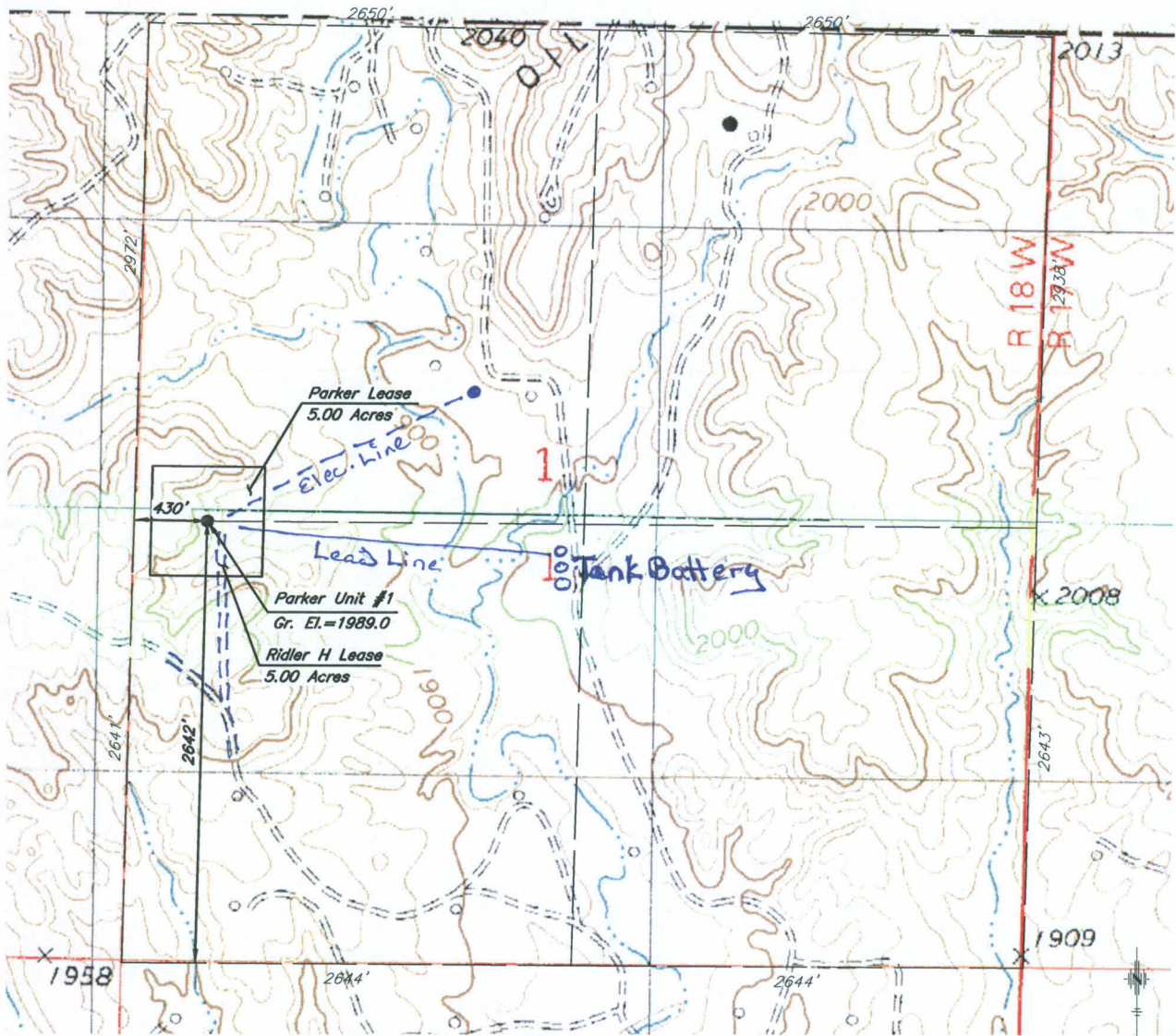
PENCO ENGINEERING, P.A.  
P.O. BOX 392  
PLAINVILLE, KS 67663  
(785) 434-4611

SW 1/4, NW 1/4, Section 1, T11S, R18W &  
NW 1/4, SW 1/4, Section 1, T11S, R18W  
LOCATION

February 7, 2013  
DATE

Parker Unit #1  
LEASE LOCATION NO.

Ellis  
COUNTY



Elevations based on NGS Benchmark E 158 Reset.  
Standard disk located on the south end of the west hub guard of the Saline River bridge on  
U.S. Hwy. 183. NAVD 88 Sea Level Elevation= 1905.80 feet.

This Survey does not constitute a boundary survey. Section corners were not found or set.  
Physical evidence was used to approximate the location of the section corners.

Scale: 1"= 1000'