

Cherokee Sh 2576(-1186)

Sh, blk

SS,lt gy-lt brn stn,vf-f gr,mod srt,qtz,
mica,arg in pt, some g por,bri flor 20%
spl,streaming cut,fr sho o,fmt od

sh,gy,sity

siltst,gy-lt gy,vfg ss lam

Ls, gy,vf xln,p por,ns

Sh,blk

Ls, med brn, f xln,dk brn,dns

Sh, dk gy,sity

Sh, dk brn-blk

Ls, brn,f xln, dns,ns

Sh, vcol gy-gn-red

LS,lt brn, f xln,fr intxl por,tr flor, no free o

Bartlesville Ss 2734(-1344)

SS,lt gy-tan stn,f gr,ang,glau,carb, g por,bri
flor in clus, about loose f - med grs in
tray,no od,sl show o,g cut

Sh,vcol, gn-gy-red brn

Ss,lt gy-tan stn,med gr,fr-g por,shly in
pt,bri flor 10%spl,g cut,show free o

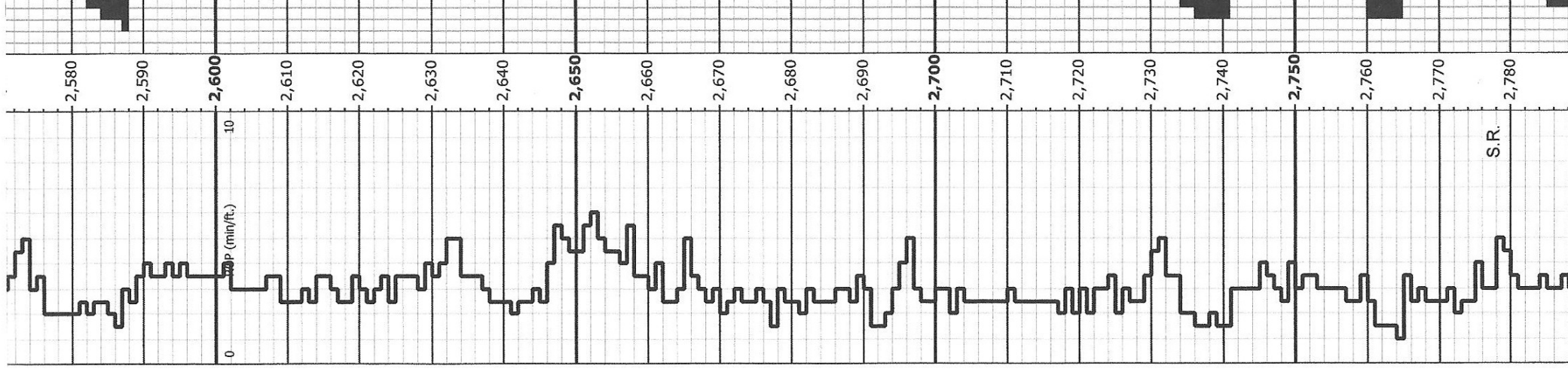
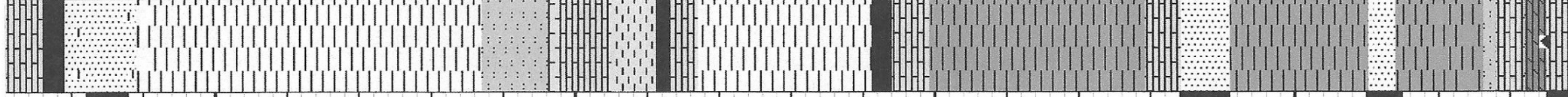
Siltst, gn,tite

Mississippian 2778(-1388)

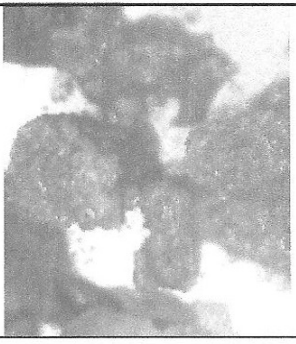
Ls,dk brn,f xln,dns

Dol,gy-med gy,f xln,dns,ns

LS,lt brn med-c xln fos frags n-fr intxl



VIS 37
Wt 9.2
LCM 2
CHL 900



S.R.