

M. Bradford Rine

Consulting Geologist, Licensed and Certified

Scale 1:240 (5"=100') Imperial
Measured Depth Log

Well Name: Ridler "B" South #8 - Venture Resources, Inc.
Location: E/2-SW-SW-SE, Section 01-11S-18W
License Number: API: 15-051-26591-00-00
Spud Date: September 03, 2013
Surface Coordinates: 2259' FEL & 330' FSL,
of Section
Bottom Hole Coordinates: Vertical Wellbore
Ground Elevation (ft): 1873 Ft. K.B. Elevation (ft): 1880 Ft.
Logged Interval (ft): 2700 Ft. To: 3393 Ft. Total Depth (ft): RTD 3393 Ft. RTD
Formation: Arbuckle at RTD
Type of Drilling Fluid: Chemical

Region: Ellis County, Kansas
Drilling Completed: September 08, 2013
Production Casing Set
Bemis-Shutts Field

Printed by MUD.LOG from WellSight Systems 1-800-447-1534 www.WellSight.com

Operator

Company: Venture Resources, Inc.
Address: 2255 South Wadsworth, Suite 205
lakewood, Colorado 80227

Geologist

Name: M. Bradford Rine
Company: Consulting Geologist, Kansas Lic. #204, Wyo #189, AAPG Cert. #2647
Address: 100 South Main, Suite #415
Wichita, Kansas 67202

Remarks

Based on sample observations, drill stem test results, and electric log evaluation, it was the decision of the Operator, to



**Ridler "B" South #8
Ellis County, Kansas**

Drilling Information

Rig: American Eagle 32
Pump: Emsco D-375 6.5 x 14
Drawworks: Emsco 250T
Collars: 527' 2-1/4 x 6-1/4
Drillpipe: 4-1/2" 16.6# XH
Toolpusher: Brad Parker

Mud: Mudco (Gary Schmidtberger)
Gas Detector: None
Drill Stem Tests: Trilobite (Andy Carreira)
Logs: Pioneer (
Water: River Water Well
Company Representatives:
Office: Todd Smith
Field: John Cearley

Daily Drilling Status

Date: Operations/Depth/Comments
08-31-13 MIRT, RU
09-01-13 Down For Holiday @ 0'
09-02-13 Down For Holiday @ 0'
09-03-13 Prepare to Spud @ 0'
09-04-13 Drilling @ 808'
09-05-13 Drilling @ 2260'
09-06-13 Drilling @ 2836'
09-07-13 Drilling @ 3306'
09-08-13 CFS @ 3393'
09-09-13 Prepare to Cement casing @ 3393'

Casing Record, Bit Record, Deviation Surveys

CASING:

Conductor: None

Surface: Ran 6 jts 8-5/8" 23#, Set @ 223'. (Quality) Cemented with 150 sx Common, 03% CC, 02% gel. Plug down at 5:15 pm, 09-03-13. Cement did circulate.

Production:

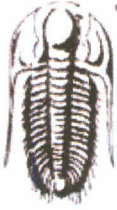
BITS:

No.	Size	Make	Model	Depth In	Depth Out	Hours
1	12-1/4	JZ	RR	0	226	?
2	7-7/8	JZ	HA21Q	226	2705	34.50
3	7-7/8	JZ	HA25L	2705	3393	

DEVIATION SURVEYS:

Deviation:	Depth:	Deviation:	Depth:
0.25*	226'	1.00*	3389'
1.00*	2705'		

DST #1: 3318-3389 (Congl,Arbuckle)
Times: 30-45-45-60



TRILOBITE
TESTING, INC.

DRILL STEM TEST REPORT

Venture resources inc.
2255 S w adsw orth
STE 205
Lakewood CO 80227
ATTN Brad Rine

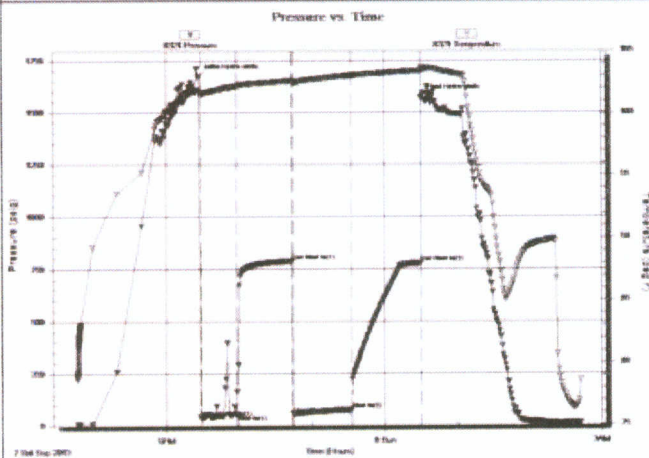
01-11s-18w Ellis
Ridler "B" South #8
Job Ticket: 53345 **DST#: 1**
Test Start: 2013.09.07 @ 19:47:01

GENERAL INFORMATION:

Formation: **Arbuckle**
Deviated: No Whipstock: ft (KB)
Time Tool Opened: 21:29:00
Time Test Ended: 02:42:30
Test Type: Conventional Bottom Hole (Initial)
Tester: Andy Carreira
Unit No: 68
Interval: **3318.00 ft (KB) To 3389.00 ft (KB) (TVD)**
Reference Elevations: 1880.00 ft (KB)
Total Depth: 3389.00 ft (KB) (TVD)
1875.00 ft (CF)
Hole Diameter: 7.88 inches Hole Condition: Fair
KB to GR/CF: 5.00 ft

Serial #: 8321 Outside
Press@RunDepth: 76.61 psig @ 3322.00 ft (KB) Capacity: 8000.00 psig
Start Date: 2013.09.07 End Date: 2013.09.08 Last Calib.: 2013.09.08
Start Time: 19:47:01 End Time: 02:42:30 Time On Btm: 2013.09.07 @ 21:27:30
Time Off Btm: 2013.09.08 @ 00:30:30

TEST COMMENT: IF:(30min) 1" blow in 3 min. 3" in 18 min. built to 4.5" in 30 min
ISl:(45min) No Return
FF:(45min) Surface blow. Flushed Tool, built to 1/2"
FSl:(60min) No Return



PRESSURE SUMMARY

Time (Min.)	Pressure (psig)	Temp (deg F)	Annotation
0	1672.30	101.82	Initial Hydro-static
2	35.51	101.53	Open To Flow (1)
31	53.19	102.12	Shut-In(1)
77	787.38	102.58	End Shut-In(1)
77	55.77	102.42	Open To Flow (2)
126	76.61	103.01	Shut-In(2)
183	778.03	103.39	End Shut-In(2)
183	1569.13	103.67	Final Hydro-static

Recovery

Length (ft)	Description	Volume (bbl)
80.00	Mud m=100%	1.12

Gas Rates

Choke (inches)	Pressure (psig)	Gas Rate (Mcfd)

Rock Types

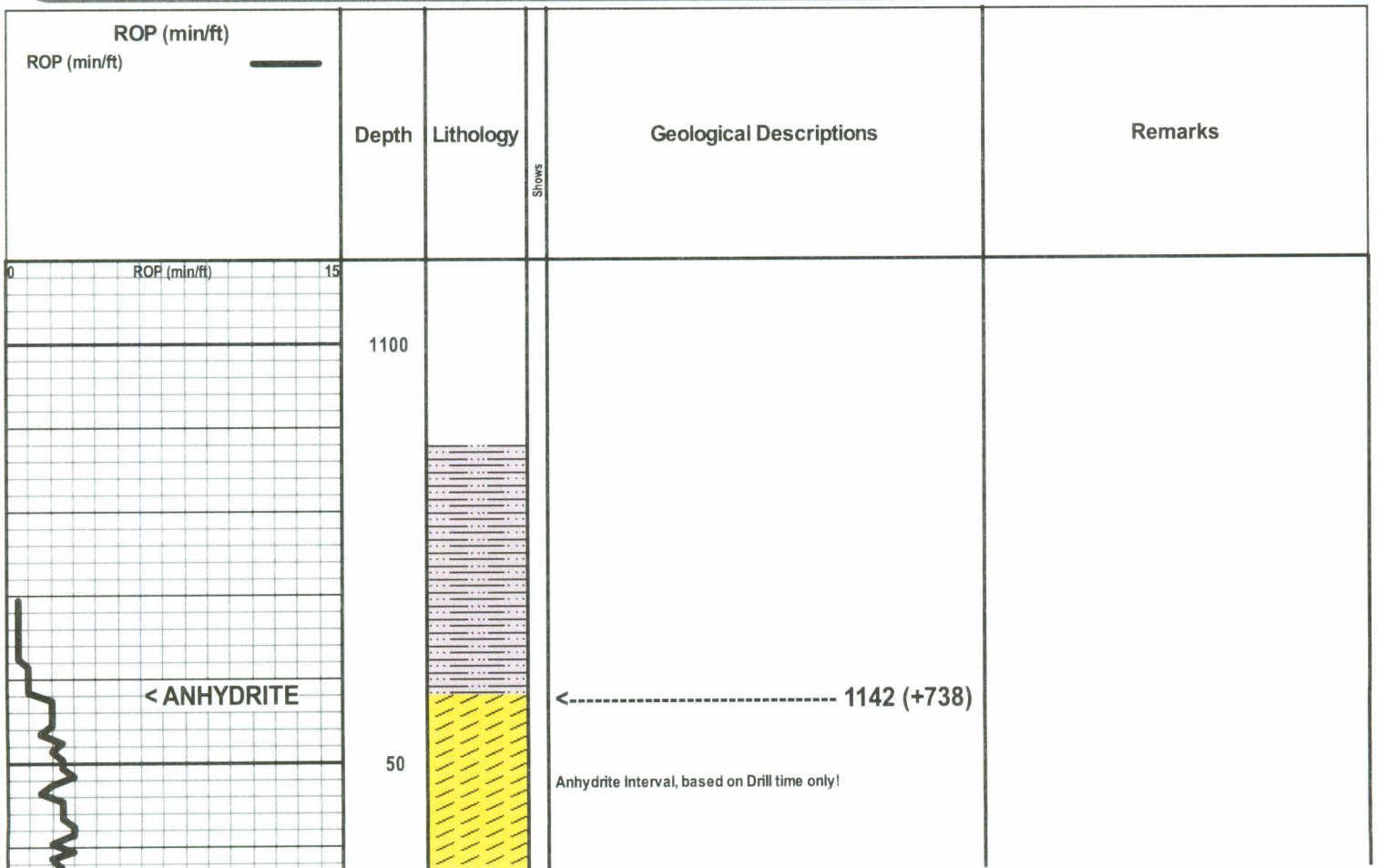
Anhy	Coal	Lmst	Shcol	SltysH
Bent	Congl	Meta	Shgy	Shlysiltst
Brec	Dol	Mrlst	Sltst	Sandyls
Cht	Gyp	Salt	Ss	
Clyst	Igne	Shale	Till	

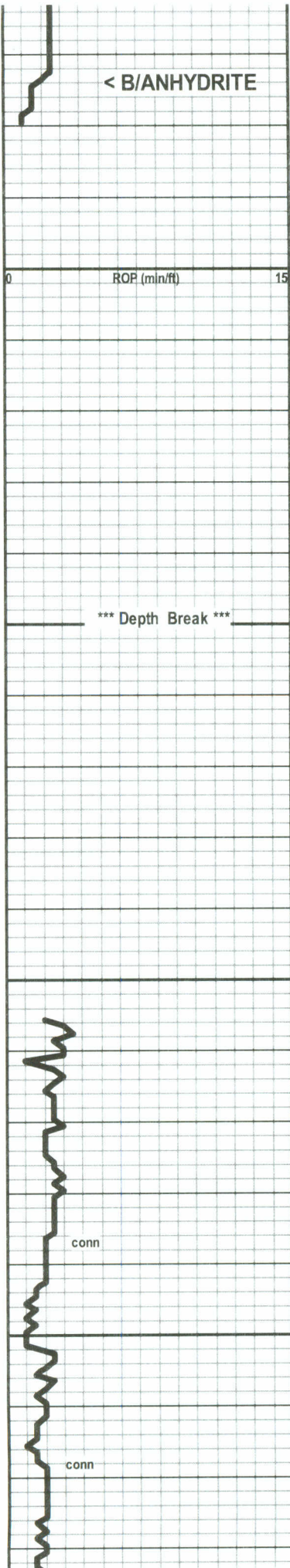
Accessories

MINERAL	Gyp	FOSSIL	Ostra	Sltstrg
Anhy	Hvymin	Algae	Pelec	Ssstrg
Arggrn	Kaol	Amph	Pellet	
Arg	Marl	Belm	Pisolite	TEXTURE
Bent	Minxl	Bioclst	Plant	Boundst
Bit	Nodule	Brach	Strom	Chalky
Brecfrag	Phos	Bryozoa		Cryxln
Calc	Pyr	Cephal	STRINGER	Earthy
Carb	Salt	Coral	Anhy	Finexln
Chtdk	Sandy	Crin	Arg	Grainst
Chtlt	Silt	Echin	Bent	Lithogr
Dol	Sil	Fish	Coal	Microxln
Feldspar	Sulphur	Foram	Dol	Mudst
Ferrpel	Tuff	Fossil	Gyp	Packst
Ferr		Gastro	Ls	Wackest
Glau		Oolite	Mrst	

Other Symbols

OIL SHOW	Spotted	Gas	INTERVAL
Gas show	Ques/trace		Core
Even	Dead		Dst





< B/ANHYDRITE

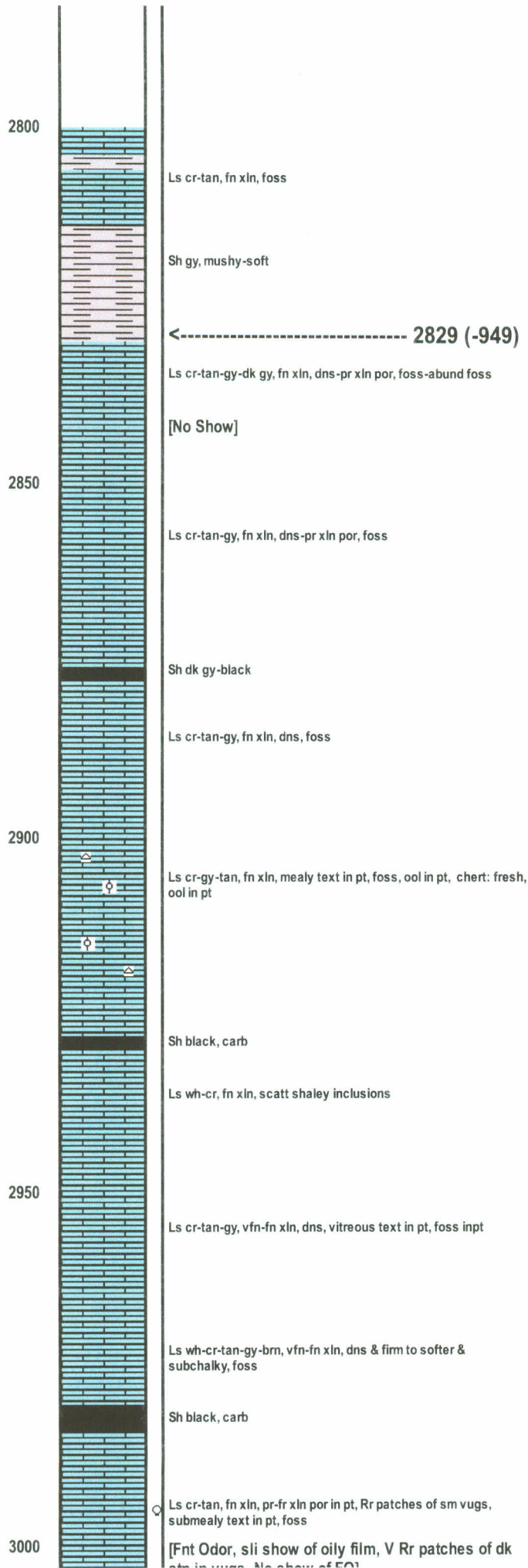
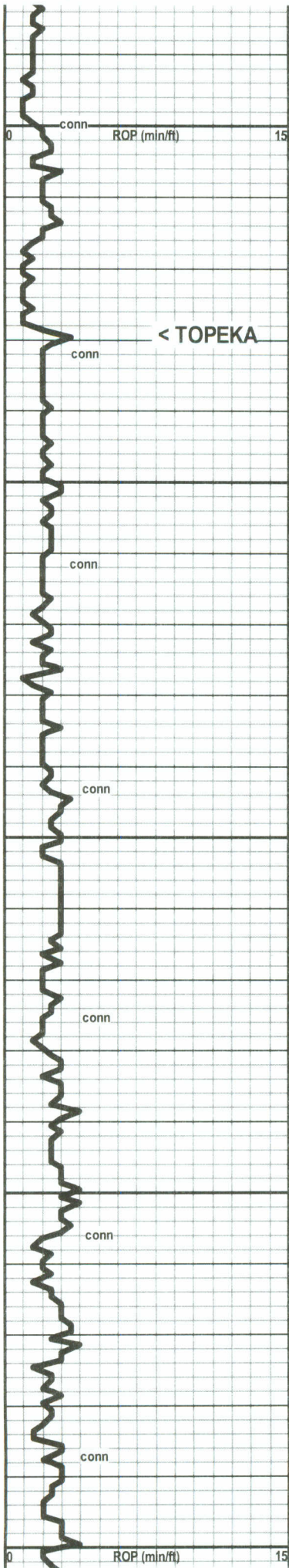
←----- 1174 (+706)

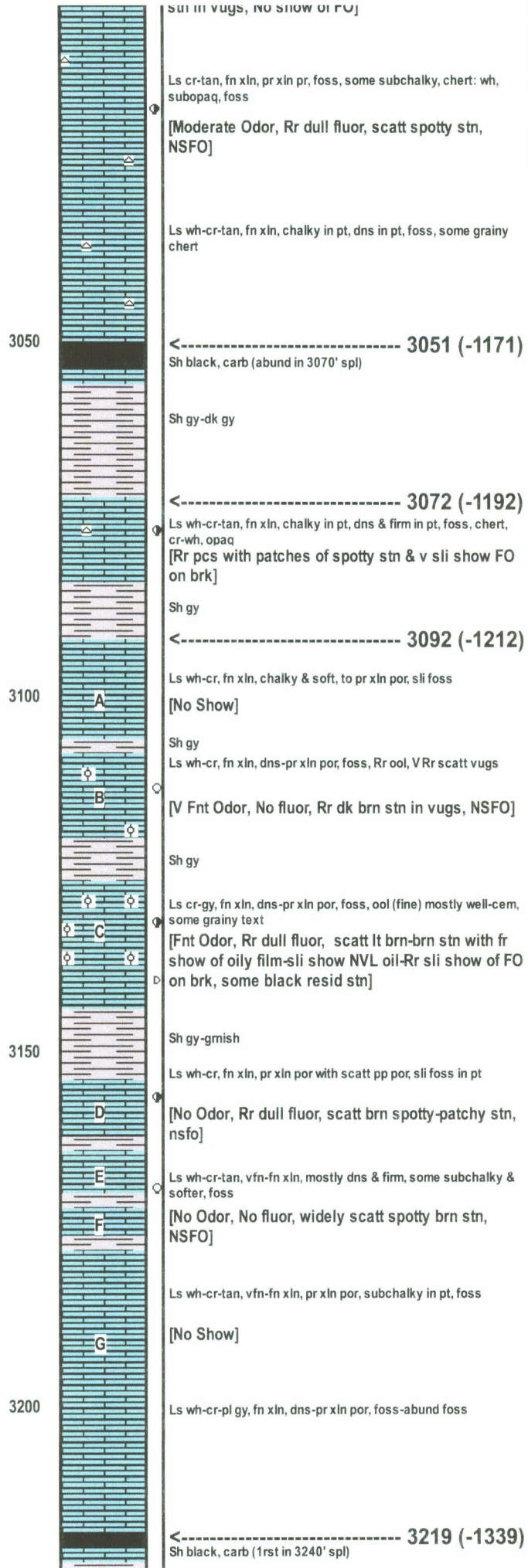
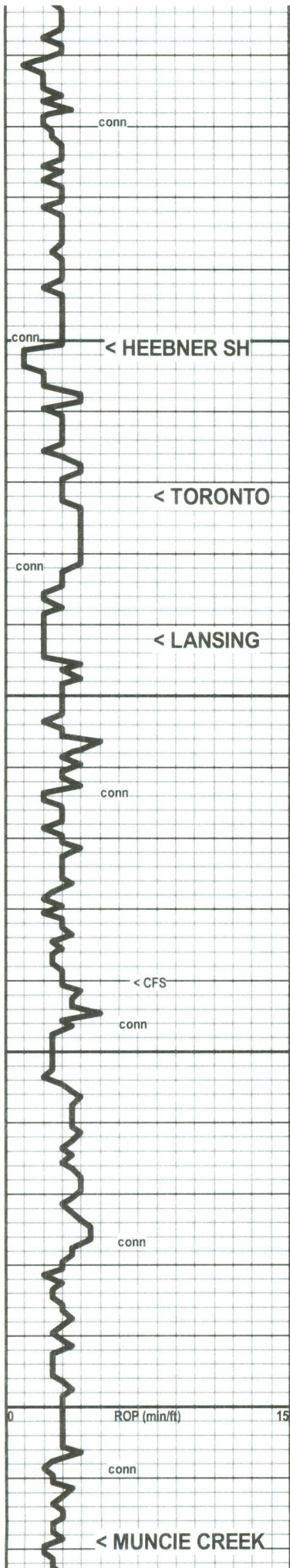
*** Depth Break ***

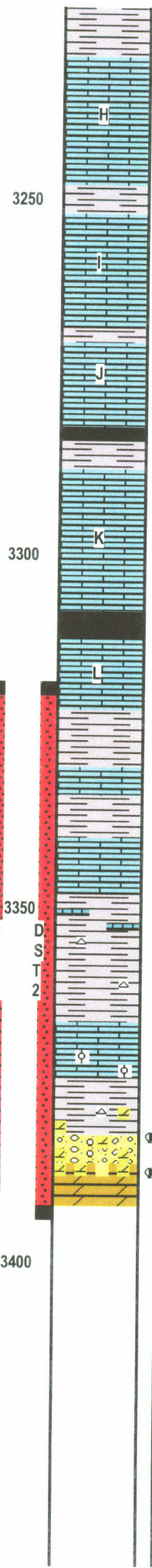
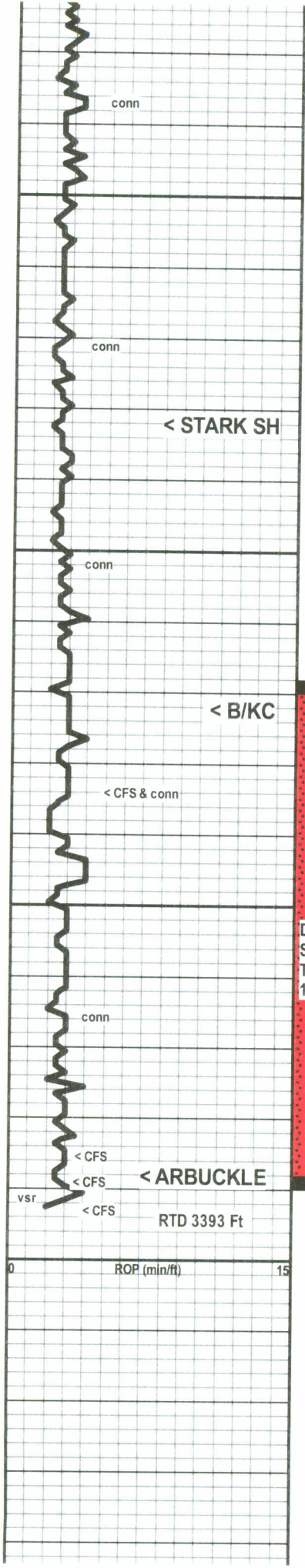
2705 ft: Bit Trip & survey!

Displace & Mudup @ 2737'

Mud Check, Drig @ 2773':
 Vis Wt WL LCM PV YP
 58 8.6 6.8 3 14 26
 Chl Hd pH Solids
 1700 Tr 11.5 2.4







Sh gy, calc in pt

Ls wh-cr-tan, vfn-fn xln, dns, some subchalky, sli foss

[No Show]

Sh gy-dk gy

Ls wh-cr, vfn-fn xln, mostly dns, scatt patches of pr xln por, sli foss

[No Odor, No fluor, Rr patches of lt brn stn, NSFO]

Ls cr, fn xln, pr-fr xln por in patches and pcs, dns in pt, sli foss

[No Odor, Scatt dull fluor, scatt lt brn stn in patches & pcs, NSFO]

----- 3282 (-1402)

Sh black-gy, carb in pt

Ls wh-cr, fn xln, chalky in pt, scatt pr xln por, scatt pp por, Rr sm vugs, foss

[Fnt Odor, Scatt dull fluor, scatt spotty brn stn with sli show FO on brk]

Ls wh-cr, fn xln, dns-pr xln por, chalky in pt

Sh black, carb

Ls wh-cr-gy, vfn-fn xln, dns, some chalky & soft, foss

[No Show]

----- 3322 (-1442)

Sh gy-dk gy-dk red, earthy-subfiss-subsilty, some limestone

Ls wh-cr, vfn-fn xln, dns, scatt foss

Sh gy-red-gm, earthy text in pt, subsilty in pt, mushy in pt (washes reddish) some chert in spls: fresh-subgrainy text, subtransl

Ls wh-cr, vfn-fn xln, dns, foss, ool in pt

sh red-gy-gm, earthy-subsilty (washes red), few chert frags; fresh, tan, transl

3385'-60 min: Abund epidote/turq gm shale, Sd glassy, gy, fr intergr por, calcite sd md gm pyritic in pt,dol

----- 3388 (-1508)

Dol gy, fn xln, pr-fr xln por, pr-gd crush, subsucrosic-subrhombic, scatt pp por, mod % of sd and gm shale in spls

[3389-93 gm shales-sdy in pt, Dol cr-pink-gy, fn xln, subsucr-sucr-subrhombic, pr-gd xln por, scatt pp & vug por

Mud Check, Drlg @ 3265':
 Vis Wt WL LCM PV YP
 55 9.1 7.2 3 10 25
 Chl Hd pH Solids
 1700 Tr 11.0 5.7

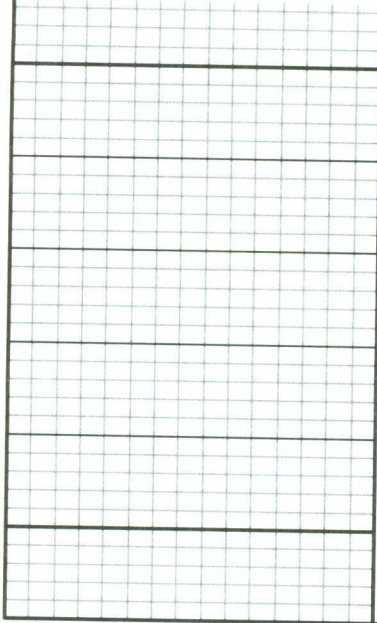
7:00 AM, September 07, 2013

Ran 22 Short Trip @ 3334' to condition hole for DST.

DST #1: 3318-3389 (Congl,Arbuckle)
 Times: 30-45-45-60
 Initial Open: Wk, built to 4-1/2" i.b. (some plugging action on chart)
 Final Open: Wk surf, flush tool, built to 1/2" i.b.
 Rec: 80' mud
 Sampler: 2000ml mud, 90 psi
 IHP: 1672 FHP: 1569
 IFP: 35-53 FFP: 55-76
 ISIP: 787 FSIP: 778
 BHT: 103°F

[Above 3385': Stg Odor, dull fluor, spotty dk brn stn with fr show FO on brk]
 [3385-89: Mod Odor, scatt dull-mid fluor, spotty-patchy dk stn with sli-fr show FO on brk, some dns pcs have no show]
 7:00 AM, September 08, 2013
 [3389-93: Stg Odor, Scatt dull fluor, patchy-even brn stn, sli-fr show of FO on brk]

DST #2: 3318-3393 (Congl, Arbuckle)
 Times: 30-45-60-60
 Initial Open:Wk-built to Stg, b.o.b. 23 min
 Final Open: Wk-built to Stg, b.o.b. 18 min
 Rec: 700' Total Fluid
 134' OSM: 02%o 98%M
 63' GOSM: 10%g 02%o 88%m
 63' GOCM: 10%g 30%o 60%m
 440' GOWCM: 15%g 20%o 25%w 40%m (no chloride count)
 Sampler: 920ml gas, 80ml oil, 400ml mud, 600ml water; 90 psi.
 IHP: 1669 FHP: 1627



3450

3500

IFP: 64-112 FFP: 149-289
ISIP: 956 FSIP: 956
BHT: 103°F

Formations	Venture Resources, Inc.			Venture (Well A)		Venture (Well B)		Well A Well B	
	Ridler "B" South #8	Ridler "G" SWD #1	Ridler "B" South #6	174' FSL & 2268' FWL	1010'FSL & 2247' FEL	Well A	Well B	Comparison(s)	
	E/2-SW-SW-SE	Sec. 01-11S-18W	Sec. 01-11S-18W	KB 1887 Ft.	KB 1897 Ft.				
	KB 1880 Ft.								
	Sample	E-Log	Datum	E-Log	Datum	E-Log	Datum		
Anhydrite	1142	1142	738	1158	729	1165	732	9	6
B/Anhydrite	1174	1175	705	1192	695	1200	697	10	8
Topeka	2829	2827	-947	2839	-952	2852	-955	5	8
Heebner Sh	3051	3050	-1170	3063	-1176	3075	-1178	6	8
Toronto	3072	3069	-1189	3084	-1197	3095	-1198	8	9
Lansing	3092	3094	-1214	3104	-1217	3116	-1219	3	5
Muncie Creek Sh	3219	3218	-1338	3231	-1344	3240	-1343	6	5
Stark Sh	3282	3280	-1400	3293	-1406	3305	-1408	6	8
B/Kansas City	3322	3323	-1443	3334	-1447	3343	-1446	4	3
Arbuckle	3388	3390	-1510	3398	-1511	3414	-1517	1	7
Total Depth	3393	3393	-1513	3520	-1633	3555	-1658	120	145



CHARGE TO: Venture Resources
 ADDRESS:
 CITY, STATE, ZIP CODE:

TICKET
 N: 24932

PAGE 1 OF 2

SERVICE LOCATIONS:
 1. Hays, KS
 2. Ness City, KS
 3.
 4. REFERRAL LOCATION

WELL/PROJECT NO. #28
 LEASE Riddler "B" South
 COUNTY/PARISH Ellis
 STATE KS
 CITY

TICKET TYPE SERVICE SALES
 CONTRACTOR American Eagle #2
 RIG NAME/NO.
 DATE 9-9-13
 OWNER Same

WELL TYPE Development
 WELL CATEGORY Development
 JOB PURPOSE Longstring
 SHIPPED VIA T
 DELIVERED TO Locations
 ORDER NO.
 WELL PERMIT NO.
 WELL LOCATION

INVOICE INSTRUCTIONS

PRICE REFERENCE	SECONDARY REFERENCE/ PART NUMBER	ACCOUNTING			DESCRIPTION	MILEAGE	QTY.			UNIT PRICE	AMOUNT
		LOC	ACCT	DF			QTY.	UM	QTY.		
575						20 mi				6.00	120.00
528					Ramp Charge (Longstring)	1 ea			3393'	7500.00	15000.00
221					KEL	2 yd				25.00	50.00
281					Mud Plush	50 gal				1.25	625.00
290					D-Air	5 cu ft				42.00	210.00
402					Centralizer	10 pgs			5-1/2"	70.00	700.00
403					Basket	4 ea				285.00	1140.00
405					Formation Pkt Shoe	1 ea				1650.00	1650.00
406					K.D. Plug & Baffle	1 ea				275.00	275.00

LEGAL TERMS: Customer hereby acknowledges and agrees to the terms and conditions on the reverse side hereof which include, but are not limited to, **PAYMENT, RELEASE, INDEMNITY**, and **LIMITED WARRANTY** provisions.
 MUST BE SIGNED BY CUSTOMER OR CUSTOMER'S AGENT PRIOR TO START OF WORK OR DELIVERY OF GOODS

X
 DATE SIGNED 9-9-13 TIME SIGNED 1000
 A.M. P.M.

REMIT PAYMENT TO:
 SWIFT SERVICES, INC.
 P.O. BOX 466
 NESS CITY, KS 67560
 785-798-2300

SURVEY		AGREE	UN-DECIDED	DIS-AGREE	PAGE TOTAL	TOTAL
OUR EQUIPMENT PERFORMED WITHOUT BREAKDOWN?					1	18,974.95
WE UNDERSTOOD AND MET YOUR NEEDS?					2	95
OUR SERVICE WAS PERFORMED WITHOUT DELAY?						
WE OPERATED THE EQUIPMENT AND PERFORMED JOB CALCULATIONS SATISFACTORILY?						
ARE YOU SATISFIED WITH OUR SERVICE?						
<input type="checkbox"/> CUSTOMER DID NOT WISH TO RESPOND						

SWIFT OPERATOR Michelle APPROVAL Michelle
 CUSTOMER ACCEPTANCE OF MATERIALS AND SERVICES The customer hereby acknowledges receipt of the materials and services listed on this ticket.
 Thank You!

JOB LOG

SWIFT Services, Inc.

DATE 9-9-13 PAGE NO.

CUSTOMER
Venture Resources

WELL NO. # 8

LEASE
Riddler "B" South

JOB TYPE
Longstring

TICKET NO.
24932

CHART NO.	TIME	RATE (BPM)	VOLUME (BBL) (GAL)	PUMPS		PRESSURE (PSI)		DESCRIPTION OF OPERATION AND MATERIALS
				T	C	TUBING	CASING	
	0520							on loc w/ FE
								RTD 3393'
								5 1/2" x 14 # x 3389' x 43'
								Leat 2, 4, 6, 8, 10, 12, 54, 56, 67, 69
								Back 13, 33, 55, 68
	0600							start FE
	0715							Break Circ.
	0800						800	set Pkr Shoe
	0810		7					Plug RH 30skts SMD
	0815	5	0				150	start 500gal Mudflush
		5	12/0				150	start KCL flush
	0820	5.5	20/0				150	start 420skts SMD @ 11.2 #
	0903	4	233/0				150	start 100skts SMD @ 14.5 #
	0910		26					End Cement wash P/L Drop L.D. Plug
	0915	5	0				150	Start Displacement circ @ 5 bbl
	0920		2.5					circ cement lost circ shutdown 5 min
	0925	4	2.5				150	land plug Resume pumping
	0930	4	4.5				250	Release pressure circ established
	0940		81.5				950/1500	Floater Held Land Plug Release Pressure Floater Held
								Did not circ cement
								Thank you
								Nick, David E., Doug & John



PO Box 466
 Ness City, KS 67560
 Off: 785-798-2300

TICKET CONTINUATION

TICKET No. 24932

CUSTOMER
 Venture Resources

WELL
 Kiddler "B" South #18

DATE
 9-9-13

PAGE 2 OF 2

PRICE REFERENCE	SECONDARY REFERENCE/ PART NUMBER	ACCOUNTING			TIME	DESCRIPTION	WELL		DATE	UNIT PRICE	AMOUNT
		LOG	ACCT	DF			QTY.	UM			
330		2				SMD Cement	550	shs	9-9-13	17.00	9350.00
276		2				Floccelc	150	#	9-9-13	2.00	300.00
581		2				SERVICE CHARGE				2.00	1100.00
583		2				MILEAGE CHARGE				1.00	1075.50
						TOTAL WEIGHT	53268				
						LOADED MILES	550.5ks				
						CUBIC FEET	40				
						TON MILES	1075.5				

CONTINUATION TOTAL 11825.50



CHARGE TO: Venture Resources
 ADDRESS:
 CITY, STATE, ZIP CODE

TICKET No 24497

PAGE 1 OF 1

SERVICE LOCATIONS

1. Well/PROJECT NO: 8 LEASE: Rider B South COUNTY/PARISH: E11's STATE: KS CITY: DATE: 9-18-13 OWNER:

2. Well Name: Ness City CONTRACTOR: TICKET TYPE: SERVICE SALES RIG NAME/NO: SHIPPED VIA: CT DELIVERED TO: 604521

3. WELL TYPE: Development WELL CATEGORY: Development JOB PURPOSE: 1st 8 5/8" WELL PERMIT NO:

4. REFERRAL LOCATION: INVOICE INSTRUCTIONS: Hays Ave Rd SE AND

PRICE REFERENCE	SECONDARY REFERENCE/ PART NUMBER	ACCOUNTING			DESCRIPTION	QTY.	U/M	QTY.	U/M	UNIT PRICE	AMOUNT
		LOC	ACCT	DF							
575					MILEAGE #110	20	mi			6.00	120.00
575 576					Pump Charge	1	ea			1000.00	1000.00
290					D-Air	1	gal			42.00	42.00
330					Swift Mulk Density	100	SKS			17.00	1700.00
581					Service Charge Cement	200	SKS			2.00	400.00
583					Drygas	484	TM			1.00	484.00

LEGAL TERMS: Customer hereby acknowledges and agrees to the terms and conditions on the reverse side hereof which include, but are not limited to, **PAYMENT, RELEASE, INDEMNITY, and LIMITED WARRANTY** provisions.

MUST BE SIGNED BY CUSTOMER OR CUSTOMER'S AGENT PRIOR TO START OF WORK OR DELIVERY OF GOODS

X DATE SIGNED: 9-18-13 TIME SIGNED: 1230 A.M. P.M.

REMIT PAYMENT TO:
 SWIFT SERVICES, INC.
 P.O. BOX 466
 NESS CITY, KS 67560
 785-798-2300

SURVEY

OUR EQUIPMENT PERFORMED WITHOUT BREAKDOWN?

WE UNDERSTOOD AND MET YOUR NEEDS?

OUR SERVICE WAS PERFORMED WITHOUT DELAY?

WE OPERATED THE EQUIPMENT AND PERFORMED JOB CALCULATIONS SATISFACTORILY?

ARE YOU SATISFIED WITH OUR SERVICE? YES NO

CUSTOMER DID NOT WISH TO RESPOND

PAGE TOTAL: 3746.00
 TAX: 6.15%
 TOTAL: 3853.13

CUSTOMER ACCEPTANCE OF MATERIALS AND SERVICES The customer hereby acknowledges receipt of the materials and services listed on this ticket.

SWIFT OPERATOR: *Mack* APPROVAL: _____

Thank You!

JOB LOG

SWIFT Services, Inc.

DATE 9-18-13 PAGE NO.

CUSTOMER Venture Resources

WELL NO. 8

LEASE Ridler B South

JOB TYPE 1" between 8 5/8" & 8 1/2"

TICKET NO. 24497

CHART NO.	TIME	RATE (BPM)	VOLUME (BBB) (GAL)	PUMPS		PRESSURE (PSI)		DESCRIPTION OF OPERATION AND MATERIALS
				T	C	TUBING	CASING	
	1230							on location
								1" @ 619
	1235	1	1	✓		100		Pump Water Circulated
	1240	1		-		100		Start Cement SMP @ 12.7 little circulation
			27	✓				Shut Down 75 sks mixed
								Pull 2 joints
								Suck out cellar
		1		✓		100		Finish mixing
		1		-		100		Circulate Cement
	1330	1	4	-		100		Bring weight up to 13.5
								Wash up Back up
	1500							Job Complete Thank You Josh, Brian, Isaac
								mixed 100 sks 10 R.P.T