



## DRILL STEM TEST REPORT

Prepared For: **Coral Production Corp.**

1600 Stout St STE 1500  
Denver, CO 80202

ATTN: Pete Debenham

### **Baxter-Miller #29-1**

### **29-6s-19w Rooks,KS**

Start Date: 2013.11.08 @ 17:05:45

End Date: 2013.11.09 @ 00:48:05

Job Ticket #: 55826                      DST #: 1

Trilobite Testing, Inc  
PO Box 362 Hays, KS 67601  
ph: 785-625-4778 fax: 785-625-5620

Printed: 2013.11.14 @ 13:58:15



**TRILOBITE  
TESTING, INC**

# DRILL STEM TEST REPORT

Coral Production Corp.

**29-6s-19w Rooks,KS**

1600 Stout St STE 1500  
Denver, CO 80202

**Baxter-Miller #29-1**

Job Ticket: 55826

**DST#: 1**

ATTN: Pete Debenham

Test Start: 2013.11.08 @ 17:05:45

## GENERAL INFORMATION:

Formation: **Toronto**

Deviated: No Whipstock: ft (KB)

Time Tool Opened: 20:10:25

Time Test Ended: 00:48:05

Test Type: Conventional Bottom Hole (Initial)

Tester: Tate Lang

Unit No: 49

**Interval: 3082.00 ft (KB) To 3186.00 ft (KB) (TVD)**

Reference Elevations: 2079.00 ft (KB)

Total Depth: 3186.00 ft (KB) (TVD)

2071.00 ft (CF)

Hole Diameter: 7.88 inches Hole Condition: Good

KB to GR/CF: 8.00 ft

**Serial #: 8898 Outside**

Press@RunDepth: 73.80 psig @ 3088.00 ft (KB)

Capacity: 8000.00 psig

Start Date: 2013.11.08

End Date:

2013.11.09

Last Calib.: 2013.11.09

Start Time: 17:05:46

End Time:

00:48:05

Time On Btm: 2013.11.08 @ 20:10:15

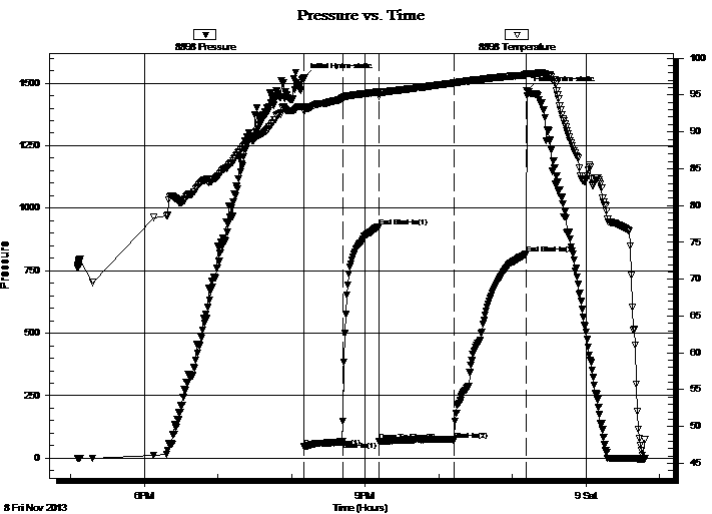
Time Off Btm: 2013.11.08 @ 23:11:35

**TEST COMMENT:** Weak surface blow built to 1 1/2"

Dead no blow back.

Dead no blow

Dead no blow back



## PRESSURE SUMMARY

| Time (Min.) | Pressure (psig) | Temp (deg F) | Annotation           |
|-------------|-----------------|--------------|----------------------|
| 0           | 1520.91         | 93.48        | Initial Hydro-static |
| 1           | 45.54           | 92.80        | Open To Flow (1)     |
| 32          | 66.46           | 94.57        | Shut-In(1)           |
| 61          | 925.60          | 95.41        | End Shut-In(1)       |
| 61          | 66.90           | 94.86        | Open To Flow (2)     |
| 123         | 73.80           | 96.63        | Shut-In(2)           |
| 181         | 816.73          | 97.72        | End Shut-In(2)       |
| 182         | 1470.24         | 97.88        | Final Hydro-static   |

## Recovery

| Length (ft) | Description                   | Volume (bbl) |
|-------------|-------------------------------|--------------|
| 60.00       | 100%M Show of free oil on top | 0.58         |
|             |                               |              |
|             |                               |              |
|             |                               |              |
|             |                               |              |

## Gas Rates

|  | Choke (inches) | Pressure (psig) | Gas Rate (Mcf/d) |
|--|----------------|-----------------|------------------|
|  |                |                 |                  |





**TRILOBITE  
TESTING, INC**

# DRILL STEM TEST REPORT

**TOOL DIAGRAM**

Coral Production Corp.

**29-6s-19w Rooks,KS**

1600 Stout St STE 1500  
Denver, CO 80202

**Baxter-Miller #29-1**

Job Ticket: 55826

**DST#: 1**

ATTN: Pete Debenham

Test Start: 2013.11.08 @ 17:05:45

## Tool Information

|                           |                    |                       |                                |                                    |
|---------------------------|--------------------|-----------------------|--------------------------------|------------------------------------|
| Drill Pipe:               | Length: 3064.00 ft | Diameter: 3.80 inches | Volume: 42.98 bbl              | Tool Weight: 2000.00 lb            |
| Heavy Wt. Pipe:           | Length: 0.00 ft    | Diameter: 0.00 inches | Volume: 0.00 bbl               | Weight set on Packer: 25000.00 lb  |
| Drill Collar:             | Length: 29.00 ft   | Diameter: 2.25 inches | Volume: 0.14 bbl               | Weight to Pull Loose: 70000.00 lb  |
|                           |                    |                       | <u>Total Volume: 43.12 bbl</u> | Tool Chased 0.00 ft                |
| Drill Pipe Above KB:      | 31.00 ft           |                       |                                | String Weight: Initial 50000.00 lb |
| Depth to Top Packer:      | 3082.00 ft         |                       |                                | Final 50000.00 lb                  |
| Depth to Bottom Packer:   | ft                 |                       |                                |                                    |
| Interval between Packers: | 104.00 ft          |                       |                                |                                    |
| Tool Length:              | 124.00 ft          |                       |                                |                                    |
| Number of Packers:        | 2                  | Diameter: 6.75 inches |                                |                                    |

Tool Comments:

| Tool Description | Length (ft) | Serial No. | Position | Depth (ft) | Accum. Lengths |
|------------------|-------------|------------|----------|------------|----------------|
|------------------|-------------|------------|----------|------------|----------------|

|                 |       |      |         |         |                                |
|-----------------|-------|------|---------|---------|--------------------------------|
| Shut In Tool    | 5.00  |      |         | 3067.00 |                                |
| Hydraulic tool  | 5.00  |      |         | 3072.00 |                                |
| Packer          | 5.00  |      |         | 3077.00 | 20.00 Bottom Of Top Packer     |
| Packer          | 5.00  |      |         | 3082.00 |                                |
| Stubb           | 1.00  |      |         | 3083.00 |                                |
| Perforations    | 4.00  |      |         | 3087.00 |                                |
| Change Over Sub | 1.00  |      |         | 3088.00 |                                |
| Recorder        | 0.00  | 8897 | Inside  | 3088.00 |                                |
| Recorder        | 0.00  | 8898 | Outside | 3088.00 |                                |
| Drill Pipe      | 94.00 |      |         | 3182.00 |                                |
| Change Over Sub | 1.00  |      |         | 3183.00 |                                |
| Bullnose        | 3.00  |      |         | 3186.00 | 104.00 Bottom Packers & Anchor |

**Total Tool Length: 124.00**



**TRILOBITE  
TESTING, INC**

# DRILL STEM TEST REPORT

**FLUID SUMMARY**

Coral Production Corp.

**29-6s-19w Rooks,KS**

1600 Stout St STE 1500  
Denver, CO 80202

**Baxter-Miller #29-1**

Job Ticket: 55826

**DST#: 1**

ATTN: Pete Debenham

Test Start: 2013.11.08 @ 17:05:45

## Mud and Cushion Information

Mud Type: Gel Chem

Cushion Type:

Oil API:

deg API

Mud Weight: 9.00 lb/gal

Cushion Length:

ft

Water Salinity:

ppm

Viscosity: 50.00 sec/qt

Cushion Volume:

bbbl

Water Loss: 6.78 in<sup>3</sup>

Gas Cushion Type:

Resistivity: ohm.m

Gas Cushion Pressure:

psig

Salinity: 250.00 ppm

Filter Cake: 1.00 inches

## Recovery Information

Recovery Table

| Length<br>ft | Description                   | Volume<br>bbl |
|--------------|-------------------------------|---------------|
| 60.00        | 100%M Show of free oil on top | 0.577         |

Total Length: 60.00 ft      Total Volume: 0.577 bbl

Num Fluid Samples: 0

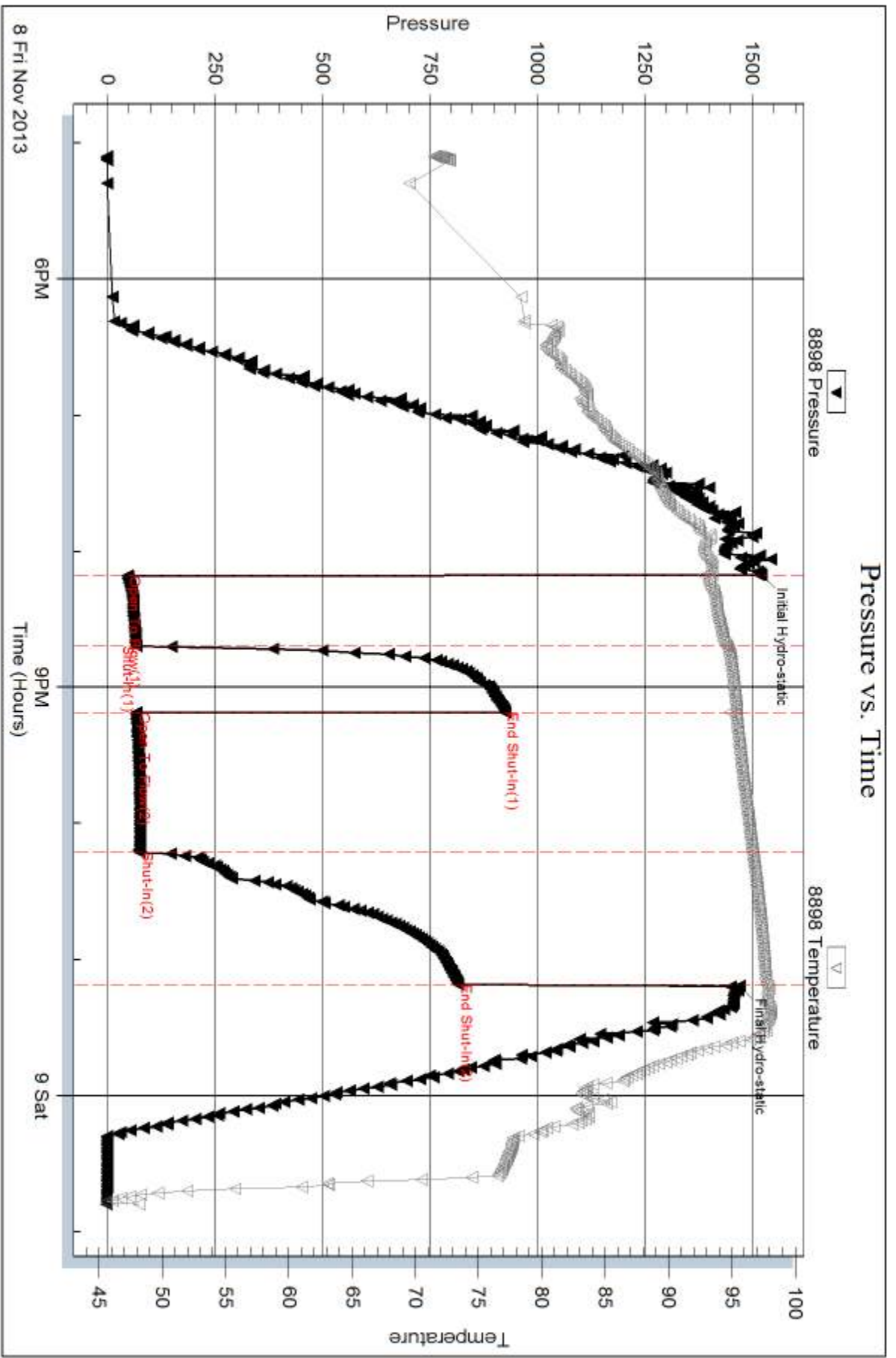
Num Gas Bombs: 0

Serial #:

Laboratory Name:

Laboratory Location:

Recovery Comments:







## DRILL STEM TEST REPORT

Prepared For: **Coral Production Corp.**

1600 Stout St STE 1500  
Denver, CO 80202

ATTN: Pete Debenham

### **Baxter-Miller #29-1**

### **29-6s-19w Rooks,KS**

Start Date: 2013.11.09 @ 11:23:38

End Date: 2013.11.09 @ 17:51:58

Job Ticket #: 55827                      DST #: 2

Trilobite Testing, Inc  
PO Box 362 Hays, KS 67601  
ph: 785-625-4778 fax: 785-625-5620

Printed: 2013.11.14 @ 13:57:34





**TRILOBITE  
TESTING, INC**

# DRILL STEM TEST REPORT

Coral Production Corp.

**29-6s-19w Rooks,KS**

1600 Stout St STE 1500  
Denver, CO 80202

**Baxter-Miller #29-1**

ATTN: Pete Debenham

Job Ticket: 55827

**DST#: 2**

Test Start: 2013.11.09 @ 11:23:38

## GENERAL INFORMATION:

Formation: **Lower Topeka**

Deviated: No Whipstock: ft (KB)

Time Tool Opened: 13:24:18

Time Test Ended: 17:51:58

Test Type: Conventional Bottom Hole (Reset)

Tester: Tate Lang

Unit No: 49

**Interval: 3204.00 ft (KB) To 3280.00 ft (KB) (TVD)**

Reference Elevations: 2079.00 ft (KB)

Total Depth: 3280.00 ft (KB) (TVD)

2071.00 ft (CF)

Hole Diameter: 7.88 inches Hole Condition: Good

KB to GR/CF: 8.00 ft

**Serial #: 8898 Outside**

Press@RunDepth: 37.30 psig @ 3213.00 ft (KB)

Capacity: 8000.00 psig

Start Date: 2013.11.09

End Date:

2013.11.09

Last Calib.: 2013.11.09

Start Time: 11:23:39

End Time:

17:51:58

Time On Btm: 2013.11.09 @ 13:24:08

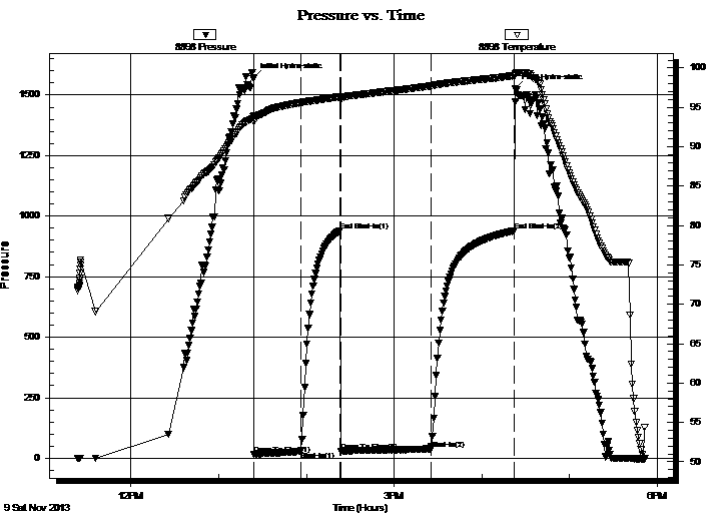
Time Off Btm: 2013.11.09 @ 16:22:38

**TEST COMMENT:** Weak surface blow built to 1"

Dead no blow back

Dead no blow

Dead no blow back



## PRESSURE SUMMARY

| Time (Min.) | Pressure (psig) | Temp (deg F) | Annotation           |
|-------------|-----------------|--------------|----------------------|
| 0           | 1572.69         | 93.87        | Initial Hydro-static |
| 1           | 16.09           | 93.20        | Open To Flow (1)     |
| 32          | 27.71           | 95.60        | Shut-In(1)           |
| 60          | 941.45          | 96.37        | End Shut-In(1)       |
| 60          | 29.25           | 95.83        | Open To Flow (2)     |
| 121         | 37.30           | 97.73        | Shut-In(2)           |
| 179         | 939.82          | 99.04        | End Shut-In(2)       |
| 179         | 1526.18         | 99.30        | Final Hydro-static   |

## Recovery

| Length (ft) | Description | Volume (bbl) |
|-------------|-------------|--------------|
| 40.00       | 100%M       | 0.30         |
|             |             |              |
|             |             |              |
|             |             |              |
|             |             |              |

\* Recovery from multiple tests

## Gas Rates

| Choke (inches) | Pressure (psig) | Gas Rate (Mcf/d) |
|----------------|-----------------|------------------|
|                |                 |                  |





**TRILOBITE  
TESTING, INC**

# DRILL STEM TEST REPORT

**TOOL DIAGRAM**

Coral Production Corp.

**29-6s-19w Rooks,KS**

1600 Stout St STE 1500  
Denver, CO 80202

**Baxter-Miller #29-1**

Job Ticket: 55827

**DST#: 2**

ATTN: Pete Debenham

Test Start: 2013.11.09 @ 11:23:38

## Tool Information

|                           |                    |                       |                                |                        |             |
|---------------------------|--------------------|-----------------------|--------------------------------|------------------------|-------------|
| Drill Pipe:               | Length: 3158.00 ft | Diameter: 3.80 inches | Volume: 44.30 bbl              | Tool Weight:           | 2000.00 lb  |
| Heavy Wt. Pipe:           | Length: 0.00 ft    | Diameter: 0.00 inches | Volume: 0.00 bbl               | Weight set on Packer:  | 25000.00 lb |
| Drill Collar:             | Length: 29.00 ft   | Diameter: 2.25 inches | Volume: 0.14 bbl               | Weight to Pull Loose:  | 70000.00 lb |
|                           |                    |                       | <u>Total Volume: 44.44 bbl</u> | Tool Chased            | 0.00 ft     |
| Drill Pipe Above KB:      | 3.00 ft            |                       |                                | String Weight: Initial | 58000.00 lb |
| Depth to Top Packer:      | 3204.00 ft         |                       |                                | Final                  | 58000.00 lb |
| Depth to Bottom Packer:   | ft                 |                       |                                |                        |             |
| Interval between Packers: | 76.00 ft           |                       |                                |                        |             |
| Tool Length:              | 96.00 ft           |                       |                                |                        |             |
| Number of Packers:        | 2                  | Diameter: 6.75 inches |                                |                        |             |

Tool Comments:

## Tool Description

| Tool Description | Length (ft) | Serial No. | Position | Depth (ft) | Accum. Lengths                |
|------------------|-------------|------------|----------|------------|-------------------------------|
| Shut In Tool     | 5.00        |            |          | 3189.00    |                               |
| Hydraulic tool   | 5.00        |            |          | 3194.00    |                               |
| Packer           | 5.00        |            |          | 3199.00    | 20.00 Bottom Of Top Packer    |
| Packer           | 5.00        |            |          | 3204.00    |                               |
| Stubb            | 1.00        |            |          | 3205.00    |                               |
| Perforations     | 7.00        |            |          | 3212.00    |                               |
| Change Over Sub  | 1.00        |            |          | 3213.00    |                               |
| Recorder         | 0.00        | 8897       | Inside   | 3213.00    |                               |
| Recorder         | 0.00        | 8898       | Outside  | 3213.00    |                               |
| Drill Pipe       | 63.00       |            |          | 3276.00    |                               |
| Change Over Sub  | 1.00        |            |          | 3277.00    |                               |
| Bullnose         | 3.00        |            |          | 3280.00    | 76.00 Bottom Packers & Anchor |

**Total Tool Length: 96.00**



**TRILOBITE  
TESTING, INC**

# DRILL STEM TEST REPORT

## FLUID SUMMARY

Coral Production Corp.

**29-6s-19w Rooks,KS**

1600 Stout St STE 1500  
Denver, CO 80202

**Baxter-Miller #29-1**

Job Ticket: 55827

**DST#: 2**

ATTN: Pete Debenham

Test Start: 2013.11.09 @ 11:23:38

### Mud and Cushion Information

Mud Type: Gel Chem

Cushion Type:

Oil API:

deg API

Mud Weight: 9.00 lb/gal

Cushion Length:

ft

Water Salinity:

ppm

Viscosity: 47.00 sec/qt

Cushion Volume:

bbbl

Water Loss: 7.18 in<sup>3</sup>

Gas Cushion Type:

Resistivity: ohm.m

Gas Cushion Pressure:

psig

Salinity: 500.00 ppm

Filter Cake: 1.00 inches

### Recovery Information

Recovery Table

| Length<br>ft | Description | Volume<br>bbl |
|--------------|-------------|---------------|
| 40.00        | 100%M       | 0.297         |

Total Length: 40.00 ft      Total Volume: 0.297 bbl

Num Fluid Samples: 0

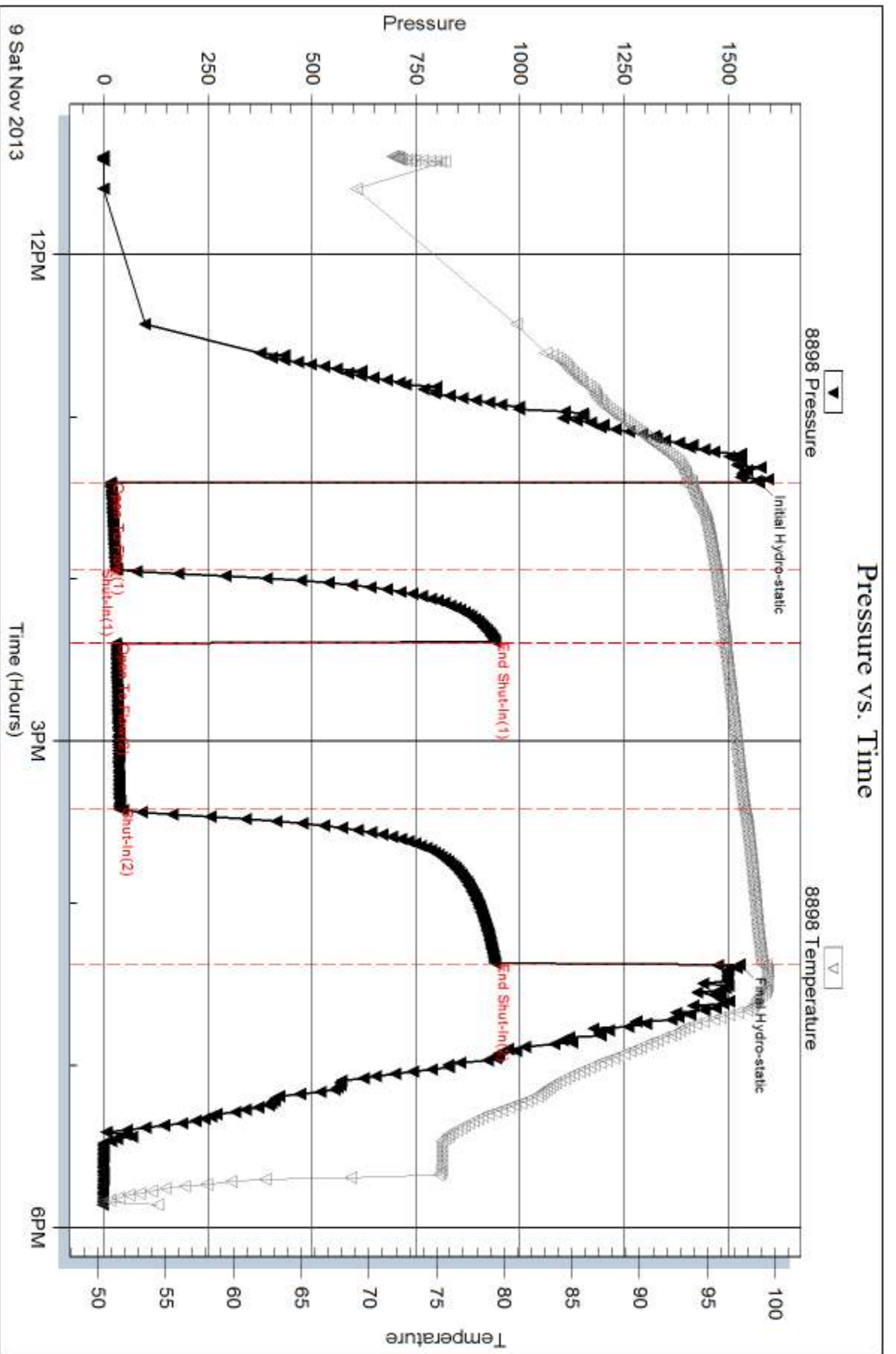
Num Gas Bombs: 0

Serial #:

Laboratory Name:

Laboratory Location:

Recovery Comments:



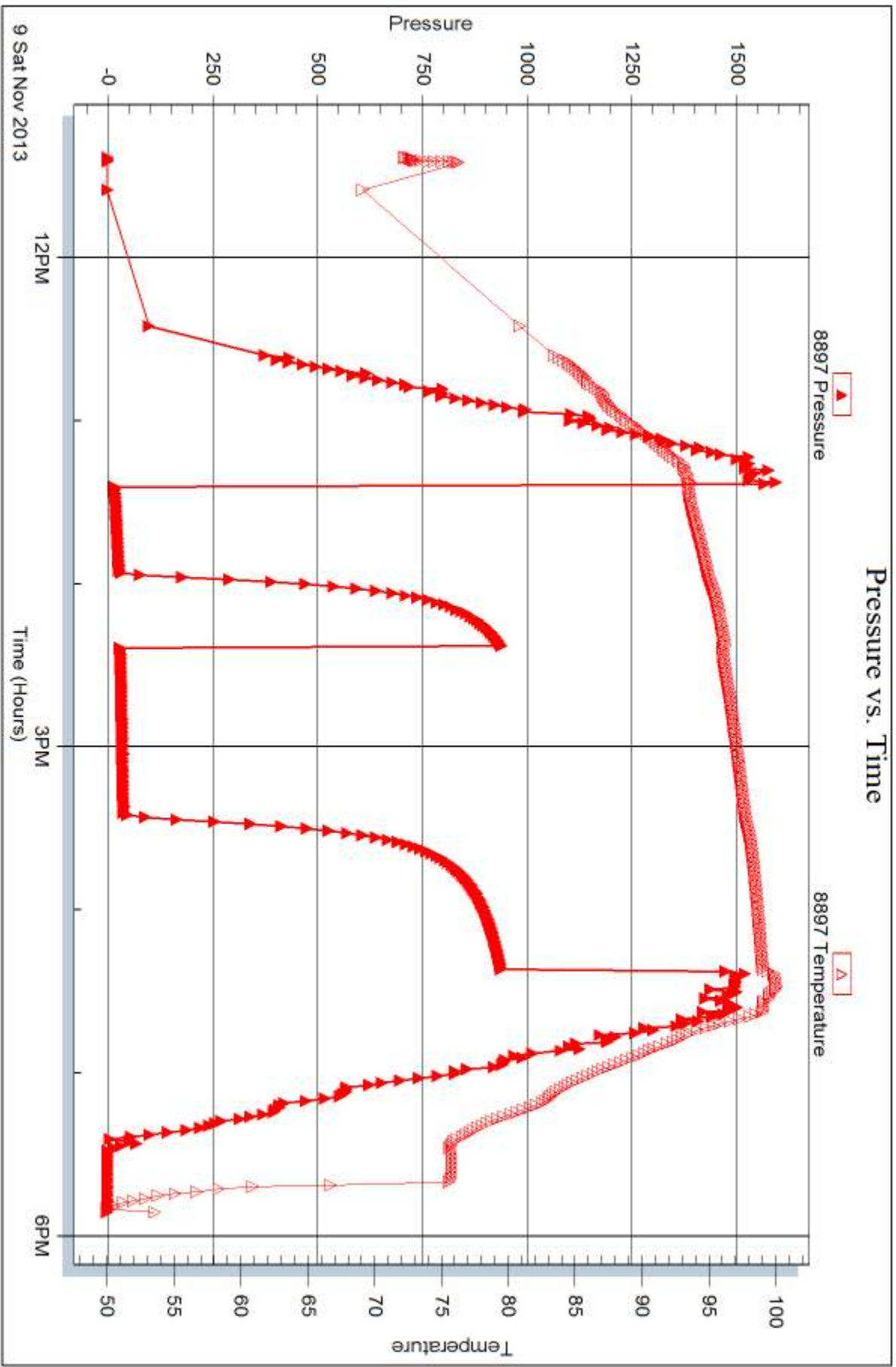
Serial #: 8897

Inside

Coral Production Corp.

Baxter-Miller #29-1

DST Test Number: 2



Triobite Testing, Inc

Ref. No: 55827

Printed: 2013.11.14 @ 13:57:35



## DRILL STEM TEST REPORT

Prepared For: **Coral Production Corp.**

1600 Stout St STE 1500  
Denver, CO 80202

ATTN: Pete Debenham

### **Baxter-Miller #29-1**

### **29-6s-19w Rooks,KS**

Start Date: 2013.11.10 @ 04:45:36

End Date: 2013.11.10 @ 11:09:06

Job Ticket #: 55828                      DST #: 3

Trilobite Testing, Inc  
PO Box 362 Hays, KS 67601  
ph: 785-625-4778 fax: 785-625-5620

Printed: 2013.11.14 @ 13:57:06



**TRILOBITE  
TESTING, INC**

# DRILL STEM TEST REPORT

Coral Production Corp.

**29-6s-19w Rooks,KS**

1600 Stout St STE 1500  
Denver, CO 80202

**Baxter-Miller #29-1**

Job Ticket: 55828

**DST#: 3**

ATTN: Pete Debenham

Test Start: 2013.11.10 @ 04:45:36

## GENERAL INFORMATION:

Formation: **LKC A-C**

Deviated: No Whipstock: ft (KB)

Time Tool Opened: 06:44:06

Time Test Ended: 11:09:06

Test Type: Conventional Bottom Hole (Reset)

Tester: Tate Lang

Unit No: 49

**Interval: 3326.00 ft (KB) To 3380.00 ft (KB) (TVD)**

Reference Elevations: 2079.00 ft (KB)

Total Depth: 3380.00 ft (KB) (TVD)

2071.00 ft (CF)

Hole Diameter: 7.88 inches Hole Condition: Good

KB to GR/CF: 8.00 ft

**Serial #: 8898 Outside**

Press@RunDepth: 17.25 psig @ 3335.00 ft (KB)

Capacity: 8000.00 psig

Start Date: 2013.11.10

End Date:

2013.11.10

Last Calib.: 2013.11.10

Start Time: 04:45:37

End Time:

11:09:06

Time On Btm: 2013.11.10 @ 06:43:56

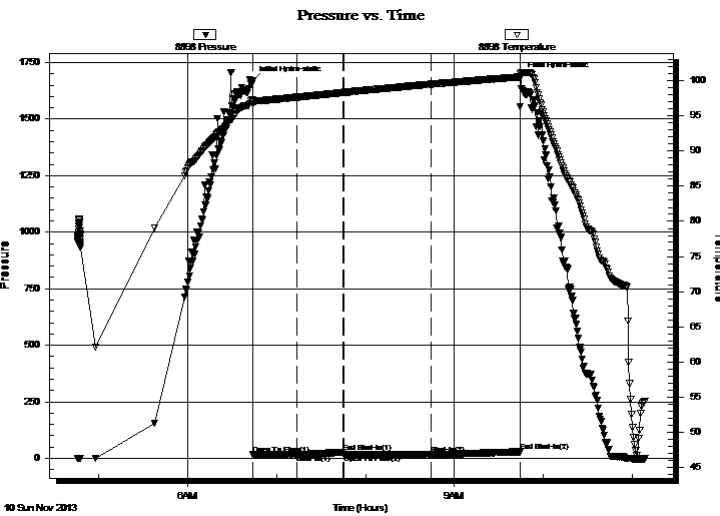
Time Off Btm: 2013.11.10 @ 09:45:06

**TEST COMMENT:** Weak surface blow built to 1/2"

Dead no blow back

Dead no blow

Dead no blow back



## PRESSURE SUMMARY

| Time (Min.) | Pressure (psig) | Temp (deg F) | Annotation           |
|-------------|-----------------|--------------|----------------------|
| 0           | 1669.13         | 97.31        | Initial Hydro-static |
| 1           | 15.76           | 96.67        | Open To Flow (1)     |
| 30          | 16.26           | 97.66        | Shut-In(1)           |
| 61          | 28.04           | 98.33        | End Shut-In(1)       |
| 62          | 16.30           | 98.33        | Open To Flow (2)     |
| 121         | 17.25           | 99.51        | Shut-In(2)           |
| 181         | 28.87           | 100.54       | End Shut-In(2)       |
| 182         | 1689.38         | 101.09       | Final Hydro-static   |

## Recovery

| Length (ft) | Description | Volume (bbl) |
|-------------|-------------|--------------|
| 1.00        | 100%M       | 0.00         |
|             |             |              |
|             |             |              |
|             |             |              |
|             |             |              |

\* Recovery from multiple tests

## Gas Rates

| Choke (inches) | Pressure (psig) | Gas Rate (Mcf/d) |
|----------------|-----------------|------------------|
|                |                 |                  |







**TRILOBITE  
TESTING, INC**

# DRILL STEM TEST REPORT

**TOOL DIAGRAM**

Coral Production Corp.

**29-6s-19w Rooks,KS**

1600 Stout St STE 1500  
Denver, CO 80202

**Baxter-Miller #29-1**

Job Ticket: 55828

**DST#: 3**

ATTN: Pete Debenham

Test Start: 2013.11.10 @ 04:45:36

## Tool Information

|                           |                    |                       |                                |                                    |
|---------------------------|--------------------|-----------------------|--------------------------------|------------------------------------|
| Drill Pipe:               | Length: 3284.00 ft | Diameter: 3.80 inches | Volume: 46.07 bbl              | Tool Weight: 2000.00 lb            |
| Heavy Wt. Pipe:           | Length: 0.00 ft    | Diameter: 0.00 inches | Volume: 0.00 bbl               | Weight set on Packer: 25000.00 lb  |
| Drill Collar:             | Length: 29.00 ft   | Diameter: 2.25 inches | Volume: 0.14 bbl               | Weight to Pull Loose: 65000.00 lb  |
|                           |                    |                       | <u>Total Volume: 46.21 bbl</u> | Tool Chased 0.00 ft                |
| Drill Pipe Above KB:      | 7.00 ft            |                       |                                | String Weight: Initial 53000.00 lb |
| Depth to Top Packer:      | 3326.00 ft         |                       |                                | Final 53000.00 lb                  |
| Depth to Bottom Packer:   | ft                 |                       |                                |                                    |
| Interval between Packers: | 54.00 ft           |                       |                                |                                    |
| Tool Length:              | 74.00 ft           |                       |                                |                                    |
| Number of Packers:        | 2                  | Diameter: 6.75 inches |                                |                                    |

Tool Comments:

| Tool Description | Length (ft) | Serial No. | Position | Depth (ft) | Accum. Lengths |
|------------------|-------------|------------|----------|------------|----------------|
|------------------|-------------|------------|----------|------------|----------------|

|                 |       |      |         |         |                               |
|-----------------|-------|------|---------|---------|-------------------------------|
| Shut In Tool    | 5.00  |      |         | 3311.00 |                               |
| Hydraulic tool  | 5.00  |      |         | 3316.00 |                               |
| Packer          | 5.00  |      |         | 3321.00 | 20.00 Bottom Of Top Packer    |
| Packer          | 5.00  |      |         | 3326.00 |                               |
| Stubb           | 1.00  |      |         | 3327.00 |                               |
| Perforations    | 7.00  |      |         | 3334.00 |                               |
| Change Over Sub | 1.00  |      |         | 3335.00 |                               |
| Recorder        | 0.00  | 8897 | Inside  | 3335.00 |                               |
| Recorder        | 0.00  | 8898 | Outside | 3335.00 |                               |
| Drill Pipe      | 31.00 |      |         | 3366.00 |                               |
| Change Over Sub | 1.00  |      |         | 3367.00 |                               |
| Perforations    | 10.00 |      |         | 3377.00 |                               |
| Bullnose        | 3.00  |      |         | 3380.00 | 54.00 Bottom Packers & Anchor |

**Total Tool Length: 74.00**



**TRILOBITE  
TESTING, INC**

# DRILL STEM TEST REPORT

**FLUID SUMMARY**

Coral Production Corp.

**29-6s-19w Rooks,KS**

1600 Stout St STE 1500  
Denver, CO 80202

**Baxter-Miller #29-1**

Job Ticket: 55828

**DST#: 3**

ATTN: Pete Debenham

Test Start: 2013.11.10 @ 04:45:36

## Mud and Cushion Information

Mud Type: Gel Chem

Cushion Type:

Oil API:

deg API

Mud Weight: 9.00 lb/gal

Cushion Length:

ft

Water Salinity:

ppm

Viscosity: 47.00 sec/qt

Cushion Volume:

bbbl

Water Loss: 7.18 in<sup>3</sup>

Gas Cushion Type:

Resistivity: ohm.m

Gas Cushion Pressure:

psig

Salinity: 500.00 ppm

Filter Cake: 1.00 inches

## Recovery Information

Recovery Table

| Length<br>ft | Description | Volume<br>bbl |
|--------------|-------------|---------------|
| 1.00         | 100%M       | 0.005         |

Total Length: 1.00 ft      Total Volume: 0.005 bbl

Num Fluid Samples: 0

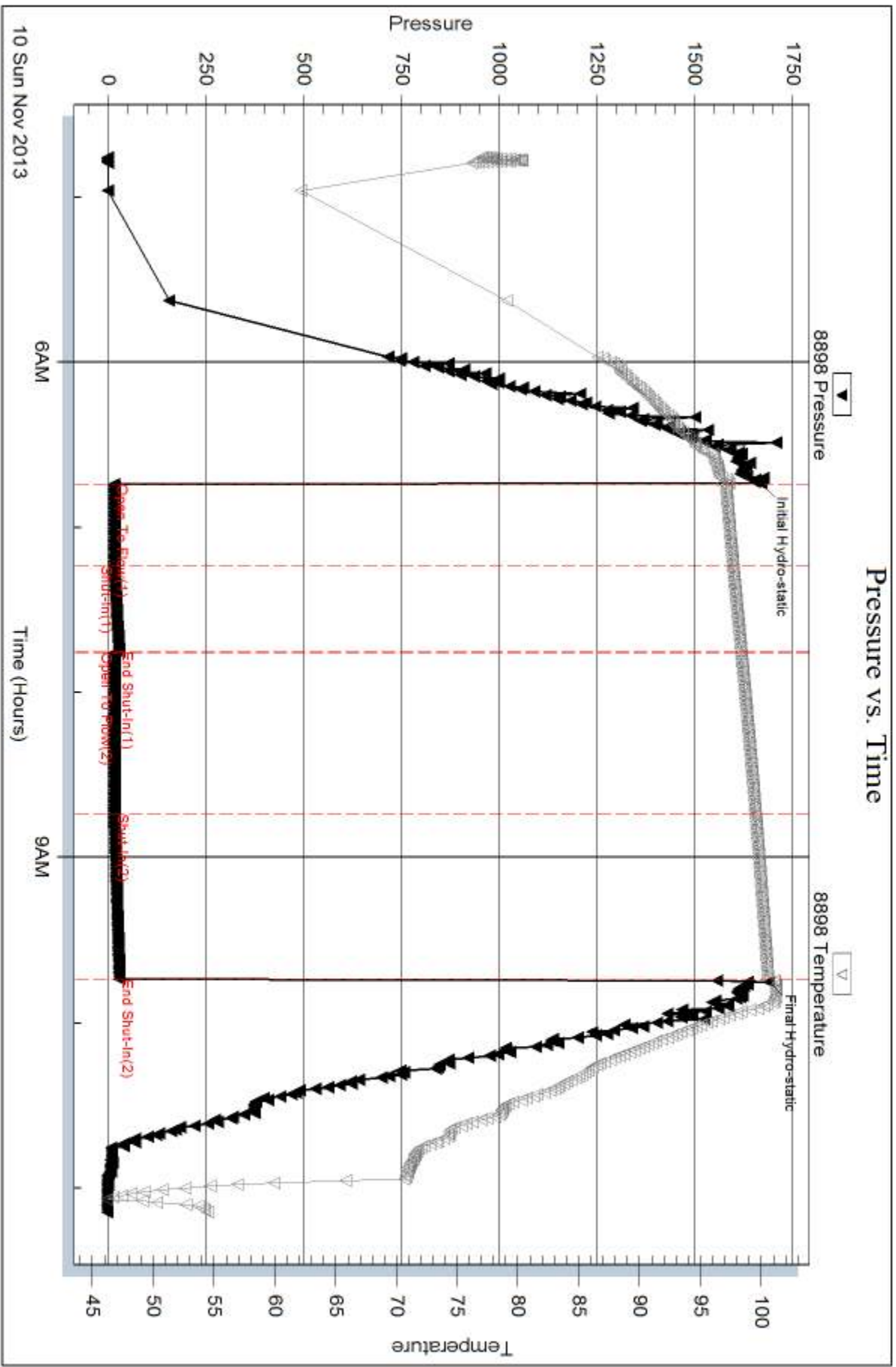
Num Gas Bombs: 0

Serial #:

Laboratory Name:

Laboratory Location:

Recovery Comments:



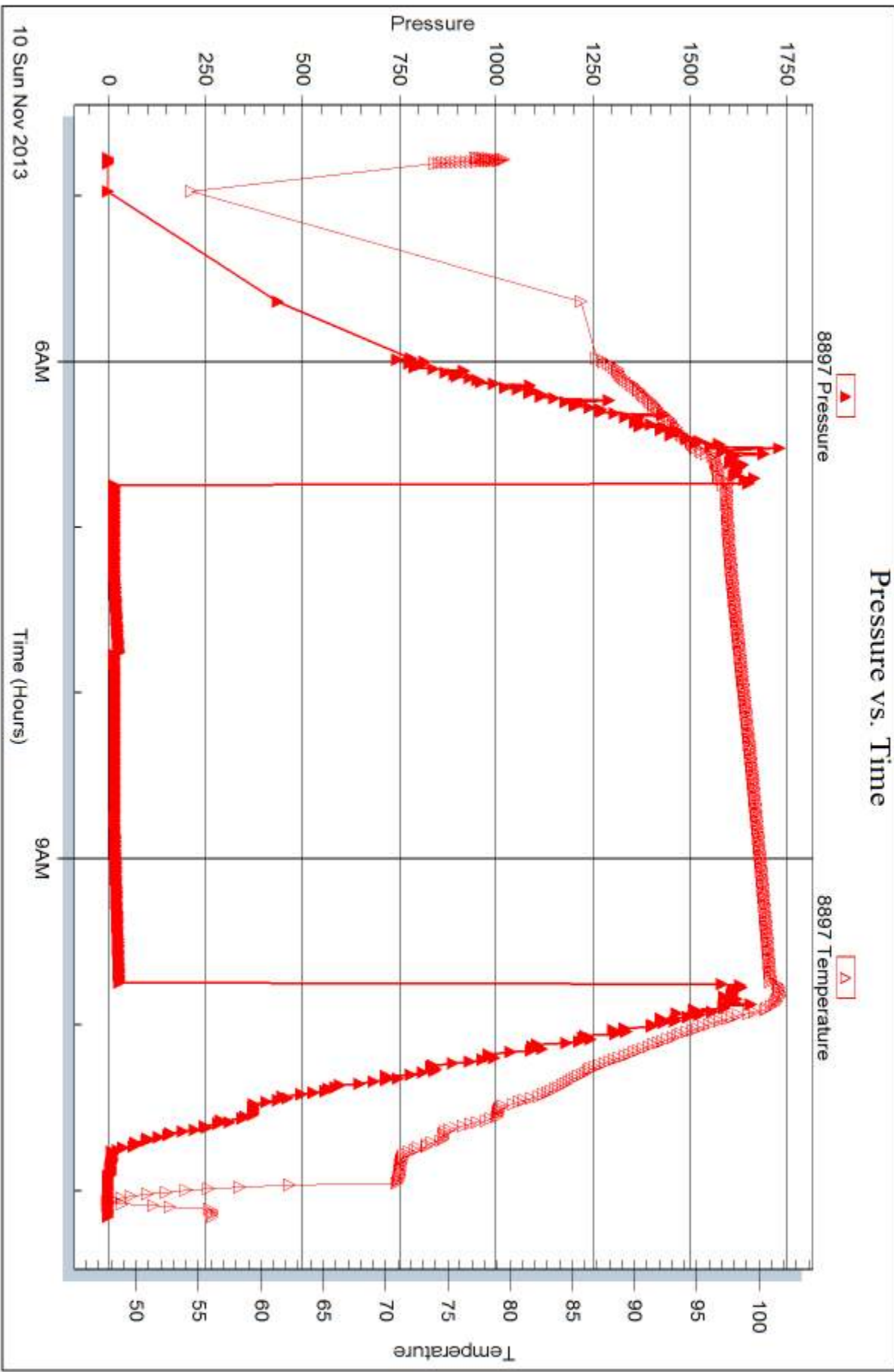
Serial #: 8897

Inside

Coral Production Corp.

Baxter-Miller #29-1

DST Test Number: 3



Trilobite Testing, Inc

Ref. No: 55828

Printed: 2013.11.14 @ 13:57:07



## DRILL STEM TEST REPORT

Prepared For: **Coral Production Corp.**

1600 Stout St STE 1500  
Denver, CO 80202

ATTN: Pete Debenham

### **Baxter-Miller #29-1**

### **29-6s-19w Rooks,KS**

Start Date: 2013.11.10 @ 17:28:23

End Date: 2013.11.11 @ 00:55:53

Job Ticket #: 55829                      DST #: 4

Trilobite Testing, Inc

PO Box 362 Hays, KS 67601

ph: 785-625-4778 fax: 785-625-5620

Printed: 2013.11.14 @ 13:56:03



**TRILOBITE TESTING, INC.**

# DRILL STEM TEST REPORT

Coral Production Corp.

**29-6s-19w Rooks, KS**

1600 Stout St STE 1500  
Denver, CO 80202

**Baxter-Miller #29-1**

Job Ticket: 55829

**DST#: 4**

ATTN: Pete Debenham

Test Start: 2013.11.10 @ 17:28:23

## GENERAL INFORMATION:

Formation: **Lansing E&G**

Deviated: No Whipstock: ft (KB)

Time Tool Opened: 19:31:23

Time Test Ended: 00:55:53

Test Type: Conventional Bottom Hole (Reset)

Tester: Tate Lang

Unit No: 49

**Interval: 3392.00 ft (KB) To 3414.00 ft (KB) (TVD)**

Reference Elevations: 2079.00 ft (KB)

Total Depth: 3392.00 ft (KB) (TVD)

2071.00 ft (CF)

Hole Diameter: 7.88 inches Hole Condition: Good

KB to GR/CF: 8.00 ft

**Serial #: 8898 Outside**

Press@RunDepth: 192.69 psig @ 3401.00 ft (KB)

Capacity: 8000.00 psig

Start Date: 2013.11.10

End Date:

2013.11.11

Last Calib.: 2013.11.11

Start Time: 17:28:24

End Time:

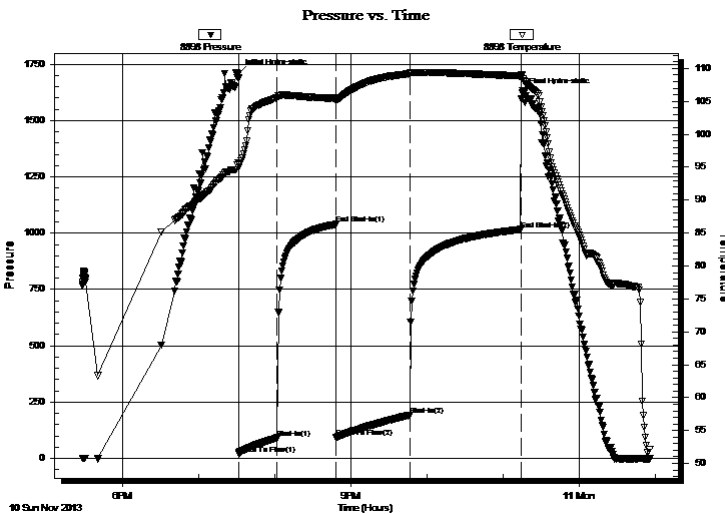
00:55:53

Time On Btm: 2013.11.10 @ 19:31:13

Time Off Btm: 2013.11.10 @ 23:14:32

**TEST COMMENT:** B.O.B. In 18 mins.  
Dead no blow back  
B.O.B. In 24 mins.  
Dead no blow back

## PRESSURE SUMMARY



| Time (Min.) | Pressure (psig) | Temp (deg F) | Annotation           |
|-------------|-----------------|--------------|----------------------|
| 0           | 1707.89         | 95.62        | Initial Hydro-static |
| 1           | 19.84           | 94.89        | Open To Flow (1)     |
| 31          | 90.89           | 105.56       | Shut-In(1)           |
| 77          | 1038.97         | 105.46       | End Shut-In(1)       |
| 77          | 94.05           | 105.12       | Open To Flow (2)     |
| 135         | 192.69          | 109.19       | Shut-In(2)           |
| 223         | 1016.42         | 108.86       | End Shut-In(2)       |
| 224         | 1623.95         | 108.90       | Final Hydro-static   |

## Recovery

| Length (ft) | Description               | Volume (bbl) |
|-------------|---------------------------|--------------|
| 300.00      | 98%W 2%M                  | 3.94         |
| 80.00       | 60%W 40%M w ith oil spots | 1.12         |
|             |                           |              |
|             |                           |              |
|             |                           |              |

\* Recovery from multiple tests

## Gas Rates

| Choke (inches) | Pressure (psig) | Gas Rate (Mcf/d) |
|----------------|-----------------|------------------|
|                |                 |                  |







**TRILOBITE  
TESTING, INC.**

# DRILL STEM TEST REPORT

**TOOL DIAGRAM**

Coral Production Corp.

**29-6s-19w Rooks,KS**

1600 Stout St STE 1500  
Denver, CO 80202

**Baxter-Miller #29-1**

Job Ticket: 55829

**DST#: 4**

ATTN: Pete Debenham

Test Start: 2013.11.10 @ 17:28:23

## Tool Information

|                           |                    |                       |                                |                                    |
|---------------------------|--------------------|-----------------------|--------------------------------|------------------------------------|
| Drill Pipe:               | Length: 3347.00 ft | Diameter: 3.80 inches | Volume: 46.95 bbl              | Tool Weight: 2000.00 lb            |
| Heavy Wt. Pipe:           | Length: 0.00 ft    | Diameter: 0.00 inches | Volume: 0.00 bbl               | Weight set on Packer: 25000.00 lb  |
| Drill Collar:             | Length: 29.00 ft   | Diameter: 2.25 inches | Volume: 0.14 bbl               | Weight to Pull Loose: 55000.00 lb  |
|                           |                    |                       | <u>Total Volume: 47.09 bbl</u> | Tool Chased 0.00 ft                |
| Drill Pipe Above KB:      | 4.00 ft            |                       |                                | String Weight: Initial 52000.00 lb |
| Depth to Top Packer:      | 3392.00 ft         |                       |                                | Final 54000.00 lb                  |
| Depth to Bottom Packer:   | ft                 |                       |                                |                                    |
| Interval between Packers: | 22.00 ft           |                       |                                |                                    |
| Tool Length:              | 42.00 ft           |                       |                                |                                    |
| Number of Packers:        | 2                  | Diameter: 6.75 inches |                                |                                    |

Tool Comments:

| Tool Description | Length (ft) | Serial No. | Position | Depth (ft) | Accum. Lengths |
|------------------|-------------|------------|----------|------------|----------------|
|------------------|-------------|------------|----------|------------|----------------|

|                           |              |      |         |         |                               |
|---------------------------|--------------|------|---------|---------|-------------------------------|
| Shut In Tool              | 5.00         |      |         | 3377.00 |                               |
| Hydraulic tool            | 5.00         |      |         | 3382.00 |                               |
| Packer                    | 5.00         |      |         | 3387.00 | 20.00 Bottom Of Top Packer    |
| Packer                    | 5.00         |      |         | 3392.00 |                               |
| Stubb                     | 1.00         |      |         | 3393.00 |                               |
| Perforations              | 8.00         |      |         | 3401.00 |                               |
| Recorder                  | 0.00         | 8897 | Inside  | 3401.00 |                               |
| Recorder                  | 0.00         | 8898 | Outside | 3401.00 |                               |
| Perforations              | 10.00        |      |         | 3411.00 |                               |
| Bullnose                  | 3.00         |      |         | 3414.00 | 22.00 Bottom Packers & Anchor |
| <b>Total Tool Length:</b> | <b>42.00</b> |      |         |         |                               |



**TRILOBITE  
TESTING, INC**

# DRILL STEM TEST REPORT

**FLUID SUMMARY**

Coral Production Corp.

**29-6s-19w Rooks,KS**

1600 Stout St STE 1500  
Denver, CO 80202

**Baxter-Miller #29-1**

Job Ticket: 55829

**DST#: 4**

ATTN: Pete Debenham

Test Start: 2013.11.10 @ 17:28:23

## Mud and Cushion Information

Mud Type: Gel Chem

Cushion Type:

Oil API:

deg API

Mud Weight: 9.00 lb/gal

Cushion Length:

ft

Water Salinity:

25000 ppm

Viscosity: 55.00 sec/qt

Cushion Volume:

bbbl

Water Loss: 7.98 in<sup>3</sup>

Gas Cushion Type:

Resistivity: ohm.m

Gas Cushion Pressure:

psig

Salinity: 500.00 ppm

Filter Cake: 1.00 inches

## Recovery Information

Recovery Table

| Length<br>ft | Description              | Volume<br>bbbl |
|--------------|--------------------------|----------------|
| 300.00       | 98%W 2%M                 | 3.944          |
| 80.00        | 60%W 40%M with oil spots | 1.122          |

Total Length: 380.00 ft

Total Volume: 5.066 bbl

Num Fluid Samples: 0

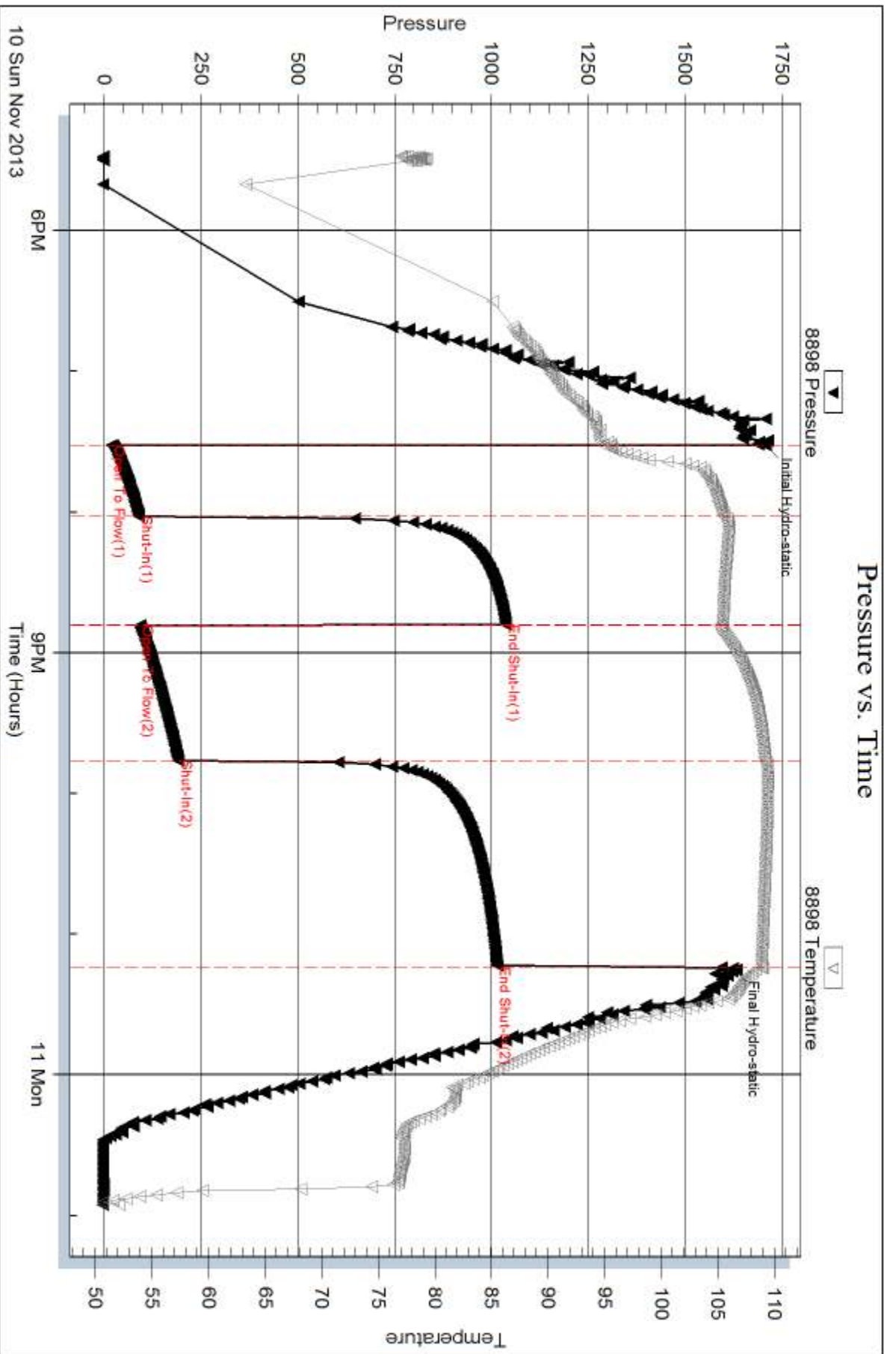
Num Gas Bombs: 0

Serial #:

Laboratory Name:

Laboratory Location:

Recovery Comments:



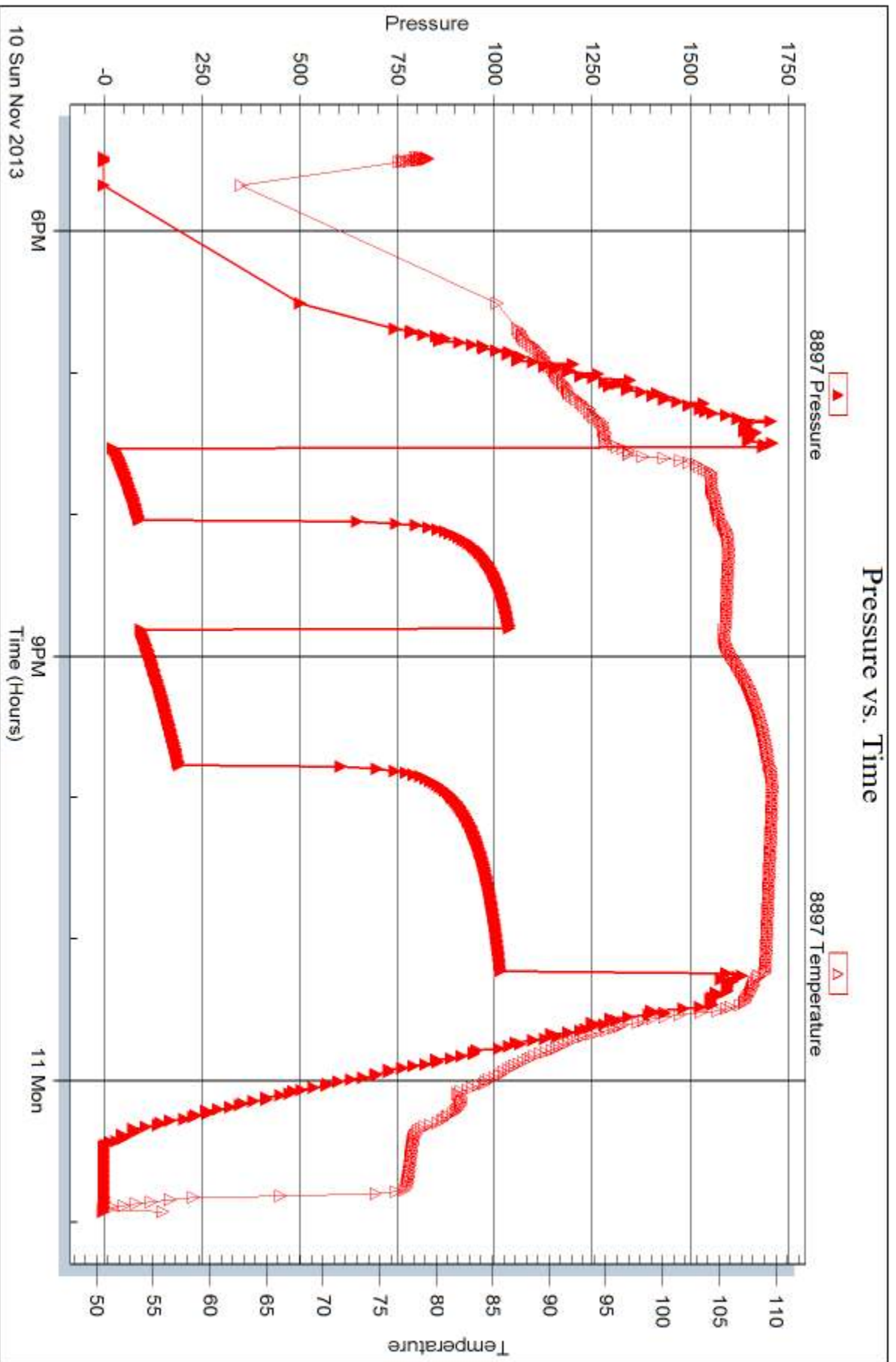
Serial #: 8897

Inside

Coral Production Corp.

Baxter-Miller #29-1

DST Test Number: 4



Trilobite Testing, Inc

Ref. No: 55829

Printed: 2013.11.14 @ 13:56:05



## DRILL STEM TEST REPORT

Prepared For: **Coral Production Corp.**

1600 Stout St STE 1500  
Denver, CO 80202

ATTN: Pete Debenham

### **Baxter-Miller #29-1**

### **29-6s-19w Rooks,KS**

Start Date: 2013.11.11 @ 15:08:10

End Date: 2013.11.11 @ 21:09:49

Job Ticket #: 55830                      DST #: 5

Trilobite Testing, Inc  
PO Box 362 Hays, KS 67601  
ph: 785-625-4778 fax: 785-625-5620

Printed: 2013.11.14 @ 13:54:46



**TRILOBITE TESTING, INC**

# DRILL STEM TEST REPORT

Coral Production Corp.

**29-6s-19w Rooks,KS**

1600 Stout St STE 1500  
Denver, CO 80202

**Baxter-Miller #29-1**

Job Ticket: 55830

**DST#: 5**

ATTN: Pete Debenham

Test Start: 2013.11.11 @ 15:08:10

## GENERAL INFORMATION:

Formation: **LKC H-K**

Deviated: No Whipstock: ft (KB)

Time Tool Opened: 17:31:20

Time Test Ended: 21:09:49

Test Type: Conventional Bottom Hole (Reset)

Tester: Tate Lang

Unit No: 49

**Interval: 3424.00 ft (KB) To 3514.00 ft (KB) (TVD)**

Reference Elevations: 2079.00 ft (KB)

Total Depth: 3514.00 ft (KB) (TVD)

2071.00 ft (CF)

Hole Diameter: 7.88 inches Hole Condition: Good

KB to GR/CF: 8.00 ft

**Serial #: 8898 Outside**

Press@RunDepth: 29.18 psig @ 3434.00 ft (KB)

Capacity: 8000.00 psig

Start Date: 2013.11.11

End Date:

2013.11.11

Last Calib.: 2013.11.11

Start Time: 15:08:11

End Time:

21:09:50

Time On Btm: 2013.11.11 @ 17:31:10

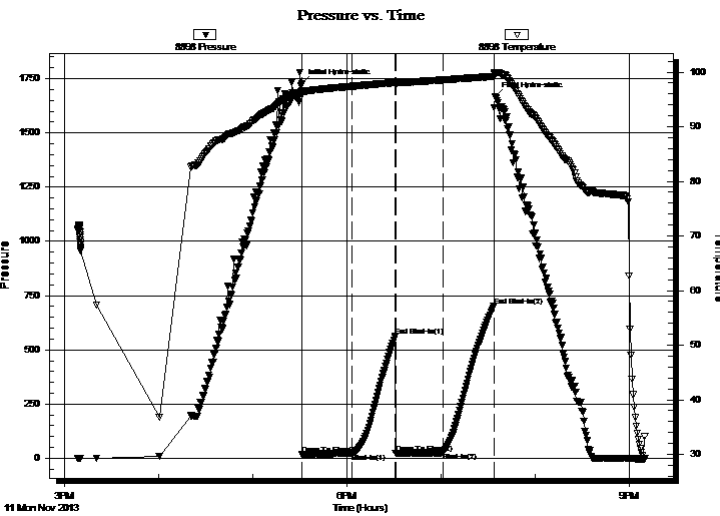
Time Off Btm: 2013.11.11 @ 19:34:19

**TEST COMMENT:** Weak surface blow built to 1"

Dead no blow back

Dead no blow

Dead no blow back



## PRESSURE SUMMARY

| Time (Min.) | Pressure (psig) | Temp (deg F) | Annotation           |
|-------------|-----------------|--------------|----------------------|
| 0           | 1725.44         | 96.52        | Initial Hydro-static |
| 1           | 18.53           | 95.78        | Open To Flow (1)     |
| 33          | 22.88           | 97.41        | Shut-In(1)           |
| 60          | 562.12          | 98.08        | End Shut-In(1)       |
| 60          | 21.79           | 97.76        | Open To Flow (2)     |
| 90          | 29.18           | 98.56        | Shut-In(2)           |
| 123         | 700.57          | 99.22        | End Shut-In(2)       |
| 124         | 1668.61         | 99.55        | Final Hydro-static   |

## Recovery

| Length (ft) | Description          | Volume (bbl) |
|-------------|----------------------|--------------|
| 10.00       | 100%M With oil spots | 0.05         |
|             |                      |              |
|             |                      |              |
|             |                      |              |
|             |                      |              |

\* Recovery from multiple tests

## Gas Rates

| Choke (inches) | Pressure (psig) | Gas Rate (Mcf/d) |
|----------------|-----------------|------------------|
|                |                 |                  |





**TRILOBITE  
TESTING, INC**

# DRILL STEM TEST REPORT

**TOOL DIAGRAM**

Coral Production Corp.

**29-6s-19w Rooks,KS**

1600 Stout St STE 1500  
Denver, CO 80202

**Baxter-Miller #29-1**

Job Ticket: 55830

**DST#: 5**

ATTN: Pete Debenham

Test Start: 2013.11.11 @ 15:08:10

## Tool Information

|                           |                    |                       |                                |                                    |
|---------------------------|--------------------|-----------------------|--------------------------------|------------------------------------|
| Drill Pipe:               | Length: 3380.00 ft | Diameter: 3.80 inches | Volume: 47.41 bbl              | Tool Weight: 2000.00 lb            |
| Heavy Wt. Pipe:           | Length: 0.00 ft    | Diameter: 0.00 inches | Volume: 0.00 bbl               | Weight set on Packer: 20000.00 lb  |
| Drill Collar:             | Length: 29.00 ft   | Diameter: 2.25 inches | Volume: 0.14 bbl               | Weight to Pull Loose: 55000.00 lb  |
|                           |                    |                       | <u>Total Volume: 47.55 bbl</u> | Tool Chased 0.00 ft                |
| Drill Pipe Above KB:      | 5.00 ft            |                       |                                | String Weight: Initial 50000.00 lb |
| Depth to Top Packer:      | 3424.00 ft         |                       |                                | Final 50000.00 lb                  |
| Depth to Bottom Packer:   | ft                 |                       |                                |                                    |
| Interval between Packers: | 90.00 ft           |                       |                                |                                    |
| Tool Length:              | 110.00 ft          |                       |                                |                                    |
| Number of Packers:        | 2                  | Diameter: 6.75 inches |                                |                                    |

Tool Comments:

| Tool Description | Length (ft) | Serial No. | Position | Depth (ft) | Accum. Lengths |
|------------------|-------------|------------|----------|------------|----------------|
|------------------|-------------|------------|----------|------------|----------------|

|                 |       |      |         |         |                               |
|-----------------|-------|------|---------|---------|-------------------------------|
| Shut In Tool    | 5.00  |      |         | 3409.00 |                               |
| Hydraulic tool  | 5.00  |      |         | 3414.00 |                               |
| Packer          | 5.00  |      |         | 3419.00 | 20.00 Bottom Of Top Packer    |
| Packer          | 5.00  |      |         | 3424.00 |                               |
| Stubb           | 1.00  |      |         | 3425.00 |                               |
| Perforations    | 8.00  |      |         | 3433.00 |                               |
| Change Over Sub | 1.00  |      |         | 3434.00 |                               |
| Recorder        | 0.00  | 8897 | Inside  | 3434.00 |                               |
| Recorder        | 0.00  | 8898 | Outside | 3434.00 |                               |
| Drill Pipe      | 62.00 |      |         | 3496.00 |                               |
| Change Over Sub | 1.00  |      |         | 3497.00 |                               |
| Perforations    | 14.00 |      |         | 3511.00 |                               |
| Bullnose        | 3.00  |      |         | 3514.00 | 90.00 Bottom Packers & Anchor |

**Total Tool Length: 110.00**





**TRILOBITE  
TESTING, INC**

# DRILL STEM TEST REPORT

**FLUID SUMMARY**

Coral Production Corp.

**29-6s-19w Rooks,KS**

1600 Stout St STE 1500  
Denver, CO 80202

**Baxter-Miller #29-1**

Job Ticket: 55830

**DST#: 5**

ATTN: Pete Debenham

Test Start: 2013.11.11 @ 15:08:10

## Mud and Cushion Information

Mud Type: Gel Chem

Cushion Type:

Oil API:

deg API

Mud Weight: 9.00 lb/gal

Cushion Length:

ft

Water Salinity:

ppm

Viscosity: 55.00 sec/qt

Cushion Volume:

bbbl

Water Loss: 6.78 in<sup>3</sup>

Gas Cushion Type:

Resistivity: ohm.m

Gas Cushion Pressure:

psig

Salinity: 500.00 ppm

Filter Cake: 1.00 inches

## Recovery Information

Recovery Table

| Length<br>ft | Description          | Volume<br>bbl |
|--------------|----------------------|---------------|
| 10.00        | 100%M With oil spots | 0.049         |

Total Length: 10.00 ft      Total Volume: 0.049 bbl

Num Fluid Samples: 0

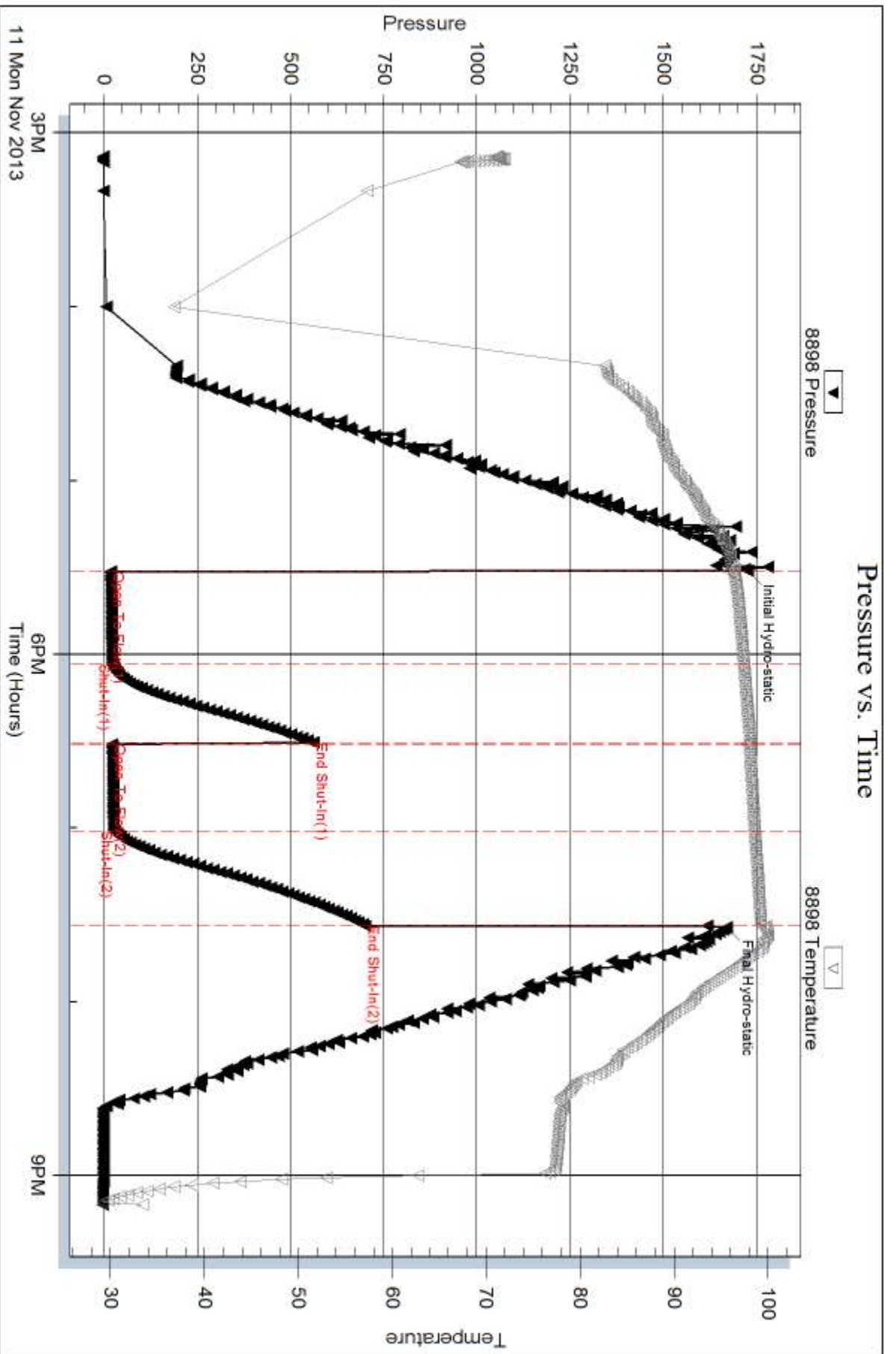
Num Gas Bombs: 0

Serial #:

Laboratory Name:

Laboratory Location:

Recovery Comments:



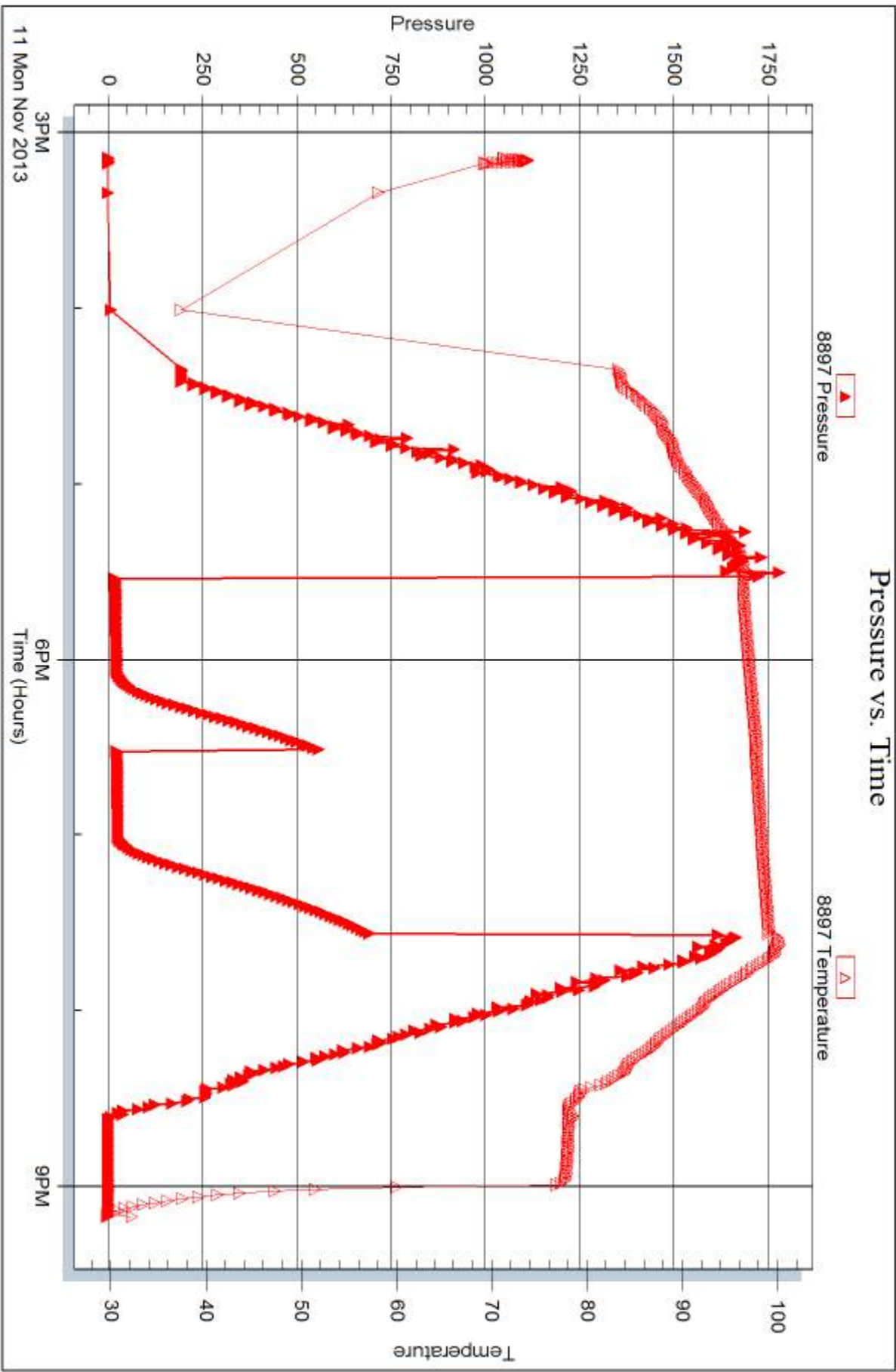
Serial #: 8897

Inside

Coral Production Corp.

Baxter-Miller #29-1

DST Test Number: 5



Trilobite Testing, Inc

Ref. No: 55830

Printed: 2013.11.14 @ 13:54:47



## DRILL STEM TEST REPORT

Prepared For: **Coral Production Corp.**

1600 Stout St STE 1500  
Denver, CO 80202

ATTN: Pete Debenham

### **Baxter-Miller #29-1**

### **29-6s-19w Rooks,KS**

Start Date: 2013.11.12 @ 06:48:47

End Date: 2013.11.12 @ 12:31:17

Job Ticket #: 55831                      DST #: 6

Trilobite Testing, Inc  
PO Box 362 Hays, KS 67601  
ph: 785-625-4778 fax: 785-625-5620

Printed: 2013.11.14 @ 13:53:08



**TRILOBITE  
TESTING, INC**

# DRILL STEM TEST REPORT

Coral Production Corp.

**29-6s-19w Rooks,KS**

1600 Stout St STE 1500  
Denver, CO 80202

**Baxter-Miller #29-1**

ATTN: Pete Debenham

Job Ticket: 55831

**DST#: 6**

Test Start: 2013.11.12 @ 06:48:47

## GENERAL INFORMATION:

Formation: **Arbuckle**

Deviated: No Whipstock: ft (KB)

Time Tool Opened: 08:57:07

Time Test Ended: 12:31:17

Test Type: Conventional Bottom Hole (Reset)

Tester: Tate Lang

Unit No: 49

**Interval: 3490.00 ft (KB) To 3571.00 ft (KB) (TVD)**

Reference Elevations: 2079.00 ft (KB)

Total Depth: 3571.00 ft (KB) (TVD)

2071.00 ft (CF)

Hole Diameter: 7.88 inches Hole Condition: Good

KB to GR/CF: 8.00 ft

**Serial #: 8898 Outside**

Press@RunDepth: 25.51 psig @ 3505.00 ft (KB)

Capacity: 8000.00 psig

Start Date: 2013.11.12

End Date:

2013.11.12

Last Calib.:

2013.11.12

Start Time: 06:48:48

End Time:

12:31:17

Time On Btm:

2013.11.12 @ 08:56:47

Time Off Btm:

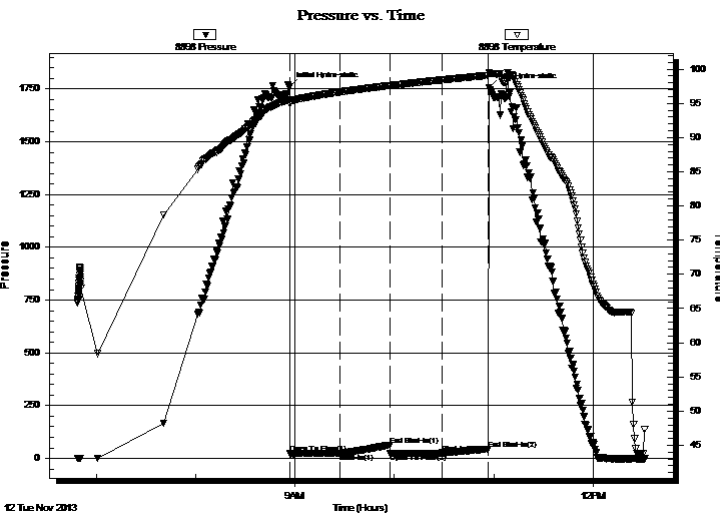
2013.11.12 @ 10:57:07

TEST COMMENT: Weak surface blow built to 1"

Dead no blow back

Dead no blow

Dead no blow back



## PRESSURE SUMMARY

| Time (Min.) | Pressure (psig) | Temp (deg F) | Annotation           |
|-------------|-----------------|--------------|----------------------|
| 0           | 1760.70         | 95.52        | Initial Hydro-static |
| 1           | 21.59           | 94.93        | Open To Flow (1)     |
| 31          | 23.79           | 96.65        | Shut-In(1)           |
| 61          | 63.54           | 97.60        | End Shut-In(1)       |
| 61          | 24.09           | 97.59        | Open To Flow (2)     |
| 92          | 25.51           | 98.42        | Shut-In(2)           |
| 120         | 44.53           | 99.08        | End Shut-In(2)       |
| 121         | 1755.67         | 99.52        | Final Hydro-static   |

## Recovery

| Length (ft) | Description | Volume (bbl) |
|-------------|-------------|--------------|
| 10.00       | 100%M       | 0.05         |
|             |             |              |
|             |             |              |
|             |             |              |
|             |             |              |

\* Recovery from multiple tests

## Gas Rates

| Choke (inches) | Pressure (psig) | Gas Rate (Mcf/d) |
|----------------|-----------------|------------------|
|                |                 |                  |





**TRILOBITE  
TESTING, INC**

# DRILL STEM TEST REPORT

**TOOL DIAGRAM**

Coral Production Corp.

**29-6s-19w Rooks,KS**

1600 Stout St STE 1500  
Denver, CO 80202

**Baxter-Miller #29-1**

Job Ticket: 55831

**DST#: 6**

ATTN: Pete Debenham

Test Start: 2013.11.12 @ 06:48:47

## Tool Information

|                           |                    |                       |                                |                                    |
|---------------------------|--------------------|-----------------------|--------------------------------|------------------------------------|
| Drill Pipe:               | Length: 3473.00 ft | Diameter: 3.80 inches | Volume: 48.72 bbl              | Tool Weight: 2000.00 lb            |
| Heavy Wt. Pipe:           | Length: 0.00 ft    | Diameter: 0.00 inches | Volume: 0.00 bbl               | Weight set on Packer: 25000.00 lb  |
| Drill Collar:             | Length: 29.00 ft   | Diameter: 2.25 inches | Volume: 0.14 bbl               | Weight to Pull Loose: 55000.00 lb  |
|                           |                    |                       | <u>Total Volume: 48.86 bbl</u> | Tool Chased 0.00 ft                |
| Drill Pipe Above KB:      | 32.00 ft           |                       |                                | String Weight: Initial 50000.00 lb |
| Depth to Top Packer:      | 3490.00 ft         |                       |                                | Final 50000.00 lb                  |
| Depth to Bottom Packer:   | ft                 |                       |                                |                                    |
| Interval between Packers: | 81.00 ft           |                       |                                |                                    |
| Tool Length:              | 101.00 ft          |                       |                                |                                    |
| Number of Packers:        | 2                  | Diameter: 6.75 inches |                                |                                    |

Tool Comments:

| Tool Description | Length (ft) | Serial No. | Position | Depth (ft) | Accum. Lengths |
|------------------|-------------|------------|----------|------------|----------------|
|------------------|-------------|------------|----------|------------|----------------|

|                 |       |      |         |         |                               |
|-----------------|-------|------|---------|---------|-------------------------------|
| Shut In Tool    | 5.00  |      |         | 3475.00 |                               |
| Hydraulic tool  | 5.00  |      |         | 3480.00 |                               |
| Packer          | 5.00  |      |         | 3485.00 | 20.00 Bottom Of Top Packer    |
| Packer          | 5.00  |      |         | 3490.00 |                               |
| Stubb           | 1.00  |      |         | 3491.00 |                               |
| Perforations    | 13.00 |      |         | 3504.00 |                               |
| Change Over Sub | 1.00  |      |         | 3505.00 |                               |
| Recorder        | 0.00  | 8897 | Inside  | 3505.00 |                               |
| Recorder        | 0.00  | 8898 | Outside | 3505.00 |                               |
| Drill Pipe      | 62.00 |      |         | 3567.00 |                               |
| Change Over Sub | 1.00  |      |         | 3568.00 |                               |
| Bullnose        | 3.00  |      |         | 3571.00 | 81.00 Bottom Packers & Anchor |

**Total Tool Length: 101.00**



**TRILOBITE  
TESTING, INC**

# DRILL STEM TEST REPORT

**FLUID SUMMARY**

Coral Production Corp.

**29-6s-19w Rooks,KS**

1600 Stout St STE 1500  
Denver, CO 80202

**Baxter-Miller #29-1**

Job Ticket: 55831

**DST#: 6**

ATTN: Pete Debenham

Test Start: 2013.11.12 @ 06:48:47

## Mud and Cushion Information

Mud Type: Gel Chem

Cushion Type:

Oil API:

deg API

Mud Weight: 9.00 lb/gal

Cushion Length:

ft

Water Salinity:

ppm

Viscosity: 59.00 sec/qt

Cushion Volume:

bbbl

Water Loss: 7.19 in<sup>3</sup>

Gas Cushion Type:

Resistivity: ohm.m

Gas Cushion Pressure:

psig

Salinity: 500.00 ppm

Filter Cake: 1.00 inches

## Recovery Information

Recovery Table

| Length<br>ft | Description | Volume<br>bbl |
|--------------|-------------|---------------|
| 10.00        | 100%M       | 0.049         |

Total Length: 10.00 ft      Total Volume: 0.049 bbl

Num Fluid Samples: 0

Num Gas Bombs: 0

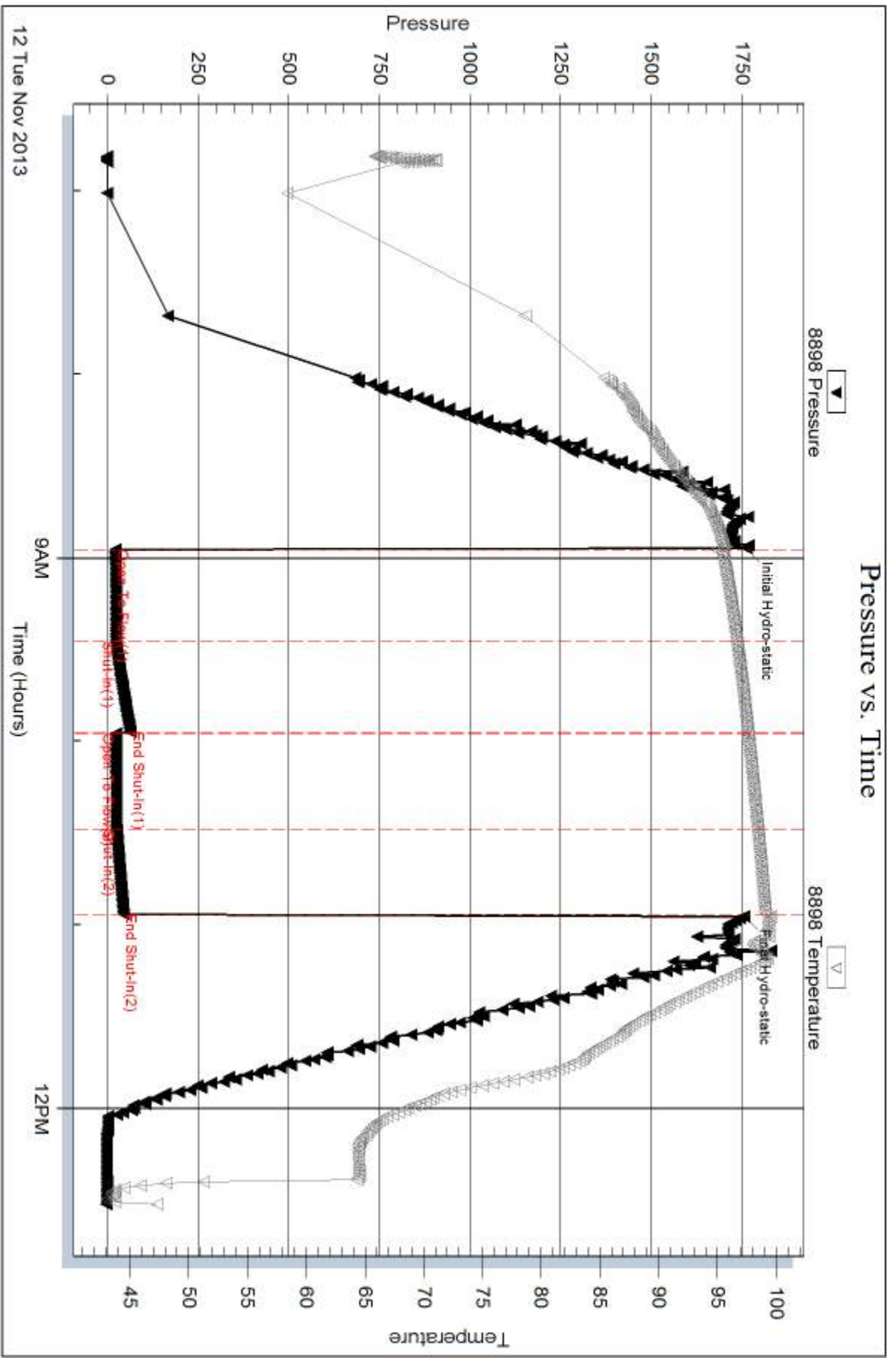
Serial #:

Laboratory Name:

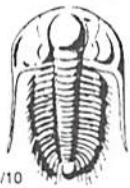
Laboratory Location:

Recovery Comments:









# TRILOBITE TESTING INC.

1515 Commerce Parkway • Hays, Kansas 67601

## Test Ticket

NO. 55826

Well Name & No. Baxter/Miller #29-1 Test No. 1 Date 11-8-13  
 Company Coral Production Corp Elevation 2079 KB 2071 GL  
 Address 1600 Stout St STE 1500 Denver, CO 80202  
 Co. Rep / Geo. Pete Debenham Rig Maverick #108  
 Location: Sec. 29 Twp. 6S Rge. 19W Co. Books State KS

Interval Tested 3082 3186 Zone Tested Toronto  
 Anchor Length 104 Drill Pipe Run 3064 Mud Wt. 8.6  
 Top Packer Depth 3078 Drill Collars Run 24 Vis 50  
 Bottom Packer Depth 3082 Wt. Pipe Run 0 WL 6.8  
 Total Depth 3186 Chlorides 250 ppm System LCM 1 1/2 #

Blow Description Newk surface blow built to 1 1/2 in  
Dead no blow back  
Dead no show  
Dead no blow back

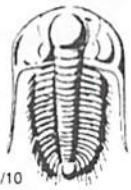
| Rec            | Feet of                               | %gas | %oil | %water | %mud            |
|----------------|---------------------------------------|------|------|--------|-----------------|
| Rec            | Feet of                               | %gas | %oil | %water | %mud            |
| Rec <u>600</u> | Feet of <u>mud show of oil on top</u> | %gas | %oil | %water | <u>100</u> %mud |
| Rec            | Feet of                               | %gas | %oil | %water | %mud            |
| Rec            | Feet of                               | %gas | %oil | %water | %mud            |

Rec Total 600 BHT 98 Gravity \_\_\_\_\_ API RW \_\_\_\_\_ @ \_\_\_\_\_ °F Chlorides \_\_\_\_\_ ppm

(A) Initial Hydrostatic 1521  Test 1150 T-On Location 15:12  
 (B) First Initial Flow 46  Jars \_\_\_\_\_ T-Started 17:05  
 (C) First Final Flow 66  Safety Joint \_\_\_\_\_ T-Open 20:10  
 (D) Initial Shut-In 926  Circ Sub \_\_\_\_\_ T-Pulled 23:10  
 (E) Second Initial Flow 67  Hourly Standby \_\_\_\_\_ T-Out 00:47  
 (F) Second Final Flow 74  Mileage 112 RH 173.60 Comments \_\_\_\_\_  
 (G) Final Shut-In 817  Sampler \_\_\_\_\_  
 (H) Final Hydrostatic 1470  Straddle \_\_\_\_\_  Ruined Shale Packer \_\_\_\_\_  
 Shale Packer 250  Ruined Packer \_\_\_\_\_  
 Initial Open 30  Extra Packer \_\_\_\_\_  Extra Copies \_\_\_\_\_  
 Initial Shut-In 30  Extra Recorder \_\_\_\_\_ Sub Total 0  
 Final Flow 600  Day Standby \_\_\_\_\_ Total 1573.60  
 Final Shut-In 600  Accessibility \_\_\_\_\_ MP/DST Disc't \_\_\_\_\_  
 Sub Total 1573.60

Approved By \_\_\_\_\_ Our Representative Pete Debenham

Trilobite Testing Inc. shall not be liable for damaged of any kind of the property or personnel of the one for whom a test is made, or for any loss suffered or sustained, directly or indirectly, through the use of its equipment, or its statements or opinion concerning the results of any test, tools lost or damaged in the hole shall be paid for at cost by the party for whom the test is made.



# TRILOBITE TESTING INC.

1515 Commerce Parkway • Hays, Kansas 67601

## Test Ticket

NO. **55827**

Well Name & No. Baxter / Miller #29-1 Test No. 2 Date 11-9-13  
 Company Coral Production Corp Elevation 2079 KB 2071 GL  
 Address 1600 Stout St STE 1500 Denver, CO 80202  
 Co. Rep / Geo. Pete Debenham Rig Maverick #108  
 Location: Sec. 29 Twp. 6S Rge. 19W Co. Rooks State KS

Interval Tested 3204 3280 Zone Tested Lower Topok  
 Anchor Length 76 Drill Pipe Run 3158 Mud Wt. 8.6  
 Top Packer Depth 3200 Drill Collars Run 29 Vis 47  
 Bottom Packer Depth 3204 Wt. Pipe Run 0 WL 7.2  
 Total Depth 3280 Chlorides 500 ppm System LCM 2#

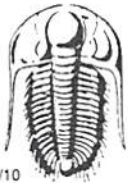
Blow Description Weak surface blow built to lin  
Dead No blow back  
Dead No blow  
Dead No blow back

| Rec       | Feet of    | %gas | %oil | %water | %mud       |
|-----------|------------|------|------|--------|------------|
|           |            |      |      |        |            |
|           |            |      |      |        |            |
| <u>40</u> | <u>mud</u> |      |      |        | <u>100</u> |
|           |            |      |      |        |            |
|           |            |      |      |        |            |

Rec Total 40 BHT 99 Gravity \_\_\_\_\_ API RW \_\_\_\_\_ @ \_\_\_\_\_ °F Chlorides \_\_\_\_\_ ppm

(A) Initial Hydrostatic 1573  Test 1150 T-On Location 11:00  
 (B) First Initial Flow 17  Jars \_\_\_\_\_ T-Started 11:23  
 (C) First Final Flow 28  Safety Joint \_\_\_\_\_ T-Open 13:24  
 (D) Initial Shut-In 941  Circ Sub \_\_\_\_\_ T-Pulled 16:24  
 (E) Second Initial Flow 29  Hourly Standby \_\_\_\_\_ T-Out 17:51  
 (F) Second Final Flow 27  Mileage 112 R/H 173.60 Comments \_\_\_\_\_  
 (G) Final Shut-In 940  Sampler \_\_\_\_\_  
 (H) Final Hydrostatic 1526  Straddle \_\_\_\_\_  Ruined Shale Packer \_\_\_\_\_  
 Shale Packer 250  Ruined Packer \_\_\_\_\_  
 Extra Packer \_\_\_\_\_  Extra Copies \_\_\_\_\_  
 Initial Open 30  Extra Recorder \_\_\_\_\_ Sub Total 0  
 Initial Shut-In 30  Day Standby \_\_\_\_\_ Total 1573.60  
 Final Flow 60  Accessibility \_\_\_\_\_ MP/DST Disc't X  
 Final Shut-In 60 Sub Total 1573.60

Approved By \_\_\_\_\_ Our Representative [Signature]  
 Trilobite Testing Inc. shall not be liable for damaged of any kind of the property or personnel of the one for whom a test is made, or for any loss suffered or sustained, directly or indirectly, through the use of its equipment, or its statements or opinion concerning the results of any test, tools lost or damaged in the hole shall be paid for at cost by the party for whom the test is made.



# TRILOBITE TESTING INC.

1515 Commerce Parkway • Hays, Kansas 67601

## Test Ticket

NO. 55828

Well Name & No. Baxter/Miller #29-1 Test No. 193 Date 11-10-13  
 Company Coral Production Corp Elevation 2079 KB 2071 GL  
 Address 1600 Stuart St STE 1500 Denver, CO 80202  
 Co. Rep / Geo. Pete Debenham Rig Maverick #108  
 Location: Sec. 29 Twp. 6S Rge. 19W Co. ROOKER State KS

Interval Tested 3326 3380 Zone Tested Lansing A-C  
 Anchor Length 54 Drill Pipe Run 3284 Mud Wt. 8.6  
 Top Packer Depth 3322 Drill Collars Run 29 Vis 47  
 Bottom Packer Depth 3326 Wt. Pipe Run 0 WL 7.2  
 Total Depth 3380 Chlorides 500 ppm System LCM 2\*

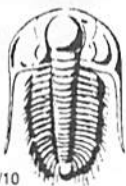
Blow Description Weak surface blow built to 1/2 in  
Lead No blow back  
Lead No blow  
Lead No blow back

| Rec          | Feet of            | %gas | %oil | %water            | %mud |
|--------------|--------------------|------|------|-------------------|------|
| Rec          | Feet of            | %gas | %oil | %water            | %mud |
| Rec <u>1</u> | Feet of <u>Mud</u> | %gas | %oil | %water <u>108</u> | %mud |
| Rec          | Feet of            | %gas | %oil | %water            | %mud |
| Rec          | Feet of            | %gas | %oil | %water            | %mud |

Rec Total 1 BHT 101 Gravity — API RW — @ — °F Chlorides — ppm

(A) Initial Hydrostatic 1669  Test 1150 T-On Location 04:27  
 (B) First Initial Flow 16  Jars — T-Started 04:45  
 (C) First Final Flow 16  Safety Joint — T-Open 06:43  
 (D) Initial Shut-In 28  Circ Sub — T-Pulled 07:43  
 (E) Second Initial Flow 16  Hourly Standby — T-Out 11:08  
 (F) Second Final Flow 17  Mileage 112 RT 173.60 Comments —  
 (G) Final Shut-In 29  Sampler —  
 (H) Final Hydrostatic 1639  Straddle —  Ruined Shale Packer —  
 Shale Packer 250  Ruined Packer —  
 Initial Open 30  Extra Packer —  Extra Copies —  
 Initial Shut-In 30  Extra Recorder — Sub Total 0  
 Final Flow 60  Day Standby — Total 1573.60  
 Final Shut-In 60  Accessibility — MP/DST Disc't X  
 Sub Total 1573.60

Approved By \_\_\_\_\_ Our Representative [Signature]  
 Trilobite Testing Inc. shall not be liable for damaged of any kind of the property or personnel of the one for whom a test is made, or for any loss suffered or sustained, directly or indirectly, through the use of its equipment, or its statements or opinion concerning the results of any test, tools lost or damaged in the hole shall be paid for at cost by the party for whom the test is made.



# TRILOBITE TESTING INC.

1515 Commerce Parkway • Hays, Kansas 67601

## Test Ticket

NO. **55829**

4/10

Well Name & No. Baxter / Miller #29H Test No. 4 Date 11-10-13  
 Company Coral Production Corp Elevation 2079 KB 2071 GL  
 Address 1600 Stout St STE 1500 Denver, CO 80202  
 Co. Rep / Geo. Pete Deberham Rig Maverick #108  
 Location: Sec. 29 Twp. 6S Rge. 19W Co. Boone State KS

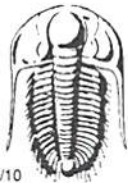
Interval Tested 3392 3414 Zone Tested Lansing E & G  
 Anchor Length 22 Drill Pipe Run \_\_\_\_\_ Mud Wt. 8.9  
 Top Packer Depth 3388 Drill Collars Run 29 Vis 55  
 Bottom Packer Depth 3392 Wt. Pipe Run 0 WL 8.0  
 Total Depth 3414 Chlorides 500 ppm System LCM 2#

Blow Description B.O.B. 18 mins  
Dead is blow back  
B.O.B. 24 mins  
Dead is blow back

| Rec                  | Feet of                      | %gas             | %oil                   | %water                   | %mud      |
|----------------------|------------------------------|------------------|------------------------|--------------------------|-----------|
| <u>80</u>            | <u>Feet of MCW Oil spots</u> |                  |                        | <u>68</u>                | <u>40</u> |
| <u>300</u>           | <u>Feet of VSMCW</u>         |                  |                        | <u>98</u>                | <u>2</u>  |
| Rec                  | Feet of                      | %gas             | %oil                   | %water                   | %mud      |
| Rec                  | Feet of                      | %gas             | %oil                   | %water                   | %mud      |
| Rec Total <u>380</u> | BHT <u>100</u>               | Gravity <u>-</u> | API RW <u>381 @ 50</u> | F Chlorides <u>25000</u> | ppm       |

(A) Initial Hydrostatic 1708  Test 1150 T-On Location 17:20  
 (B) First Initial Flow 20  Jars \_\_\_\_\_ T-Started 17:28  
 (C) First Final Flow 1891  Safety Joint \_\_\_\_\_ T-Open 19:32  
 (D) Initial Shut-In 1039  Circ Sub \_\_\_\_\_ T-Pulled 23:17  
 (E) Second Initial Flow 94  Hourly Standby \_\_\_\_\_ T-Out 00:56  
 (F) Second Final Flow 143  Mileage 112 R 17 173.60 Comments \_\_\_\_\_  
 (G) Final Shut-In 1016  Sampler \_\_\_\_\_  
 (H) Final Hydrostatic 1624  Straddle \_\_\_\_\_  Ruined Shale Packer \_\_\_\_\_  
 Initial Open 30  Shale Packer 250  Ruined Packer \_\_\_\_\_  
 Initial Shut-In 45  Extra Packer \_\_\_\_\_  Extra Copies \_\_\_\_\_  
 Final Flow 60  Extra Recorder \_\_\_\_\_ Sub Total 0  
 Final Shut-In 90  Day Standby \_\_\_\_\_ Total 1573.60  
 Accessibility \_\_\_\_\_ MP/DST Disc't X  
 Sub Total 1573.60

Approved By \_\_\_\_\_ Our Representative [Signature]  
 Trilobite Testing Inc. shall not be liable for damaged of any kind of the property or personnel of the one for whom a test is made, or for any loss suffered or sustained, directly or indirectly, through the use of its equipment, or its statements or opinion concerning the results of any test, tools lost or damaged in the hole shall be paid for at cost by the party for whom the test is made.



# TRILOBITE TESTING INC.

1515 Commerce Parkway • Hays, Kansas 67601

## Test Ticket

NO. 55830

Well Name & No. Baxter/Miller #29-1 Test No. 5 Date 11-11-13  
 Company Coral Production Corp Elevation 2079 KB 2071 GL  
 Address 1600 Stout St STE 1500 Denver, CO 80202  
 Co. Rep / Geo. Pete Debenham Rig Maverick #108  
 Location: Sec. 29 Twp. 6S Rge. 19W Co. Roots State KS

Interval Tested 3424 3514 Zone Tested Lansing H-K  
 Anchor Length 90 Drill Pipe Run 3380 Mud Wt. 8.9  
 Top Packer Depth 3420 Drill Collars Run 29 Vis 55  
 Bottom Packer Depth 3424 Wt. Pipe Run 0 WL 6.7  
 Total Depth 3514 Chlorides 500 ppm System LCM 2#

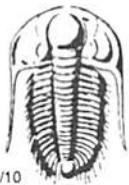
Blow Description Weak surface blow built to lin  
Dead no blow back  
Dead no blow  
Dead no blow back

| Rec           | Feet of                           | %gas | %oil | %water            | %mud |
|---------------|-----------------------------------|------|------|-------------------|------|
| Rec           | Feet of                           | %gas | %oil | %water            | %mud |
| Rec <u>10</u> | Feet of <u>mud with oil spots</u> | %gas | %oil | %water <u>100</u> | %mud |
| Rec           | Feet of                           | %gas | %oil | %water            | %mud |
| Rec           | Feet of                           | %gas | %oil | %water            | %mud |

Rec Total 10 BHT 99 Gravity \_\_\_\_\_ API RW \_\_\_\_\_ @ \_\_\_\_\_ °F Chlorides \_\_\_\_\_ ppm

(A) Initial Hydrostatic 1725  Test 1150 T-On Location 14:25  
 (B) First Initial Flow 19  Jars \_\_\_\_\_ T-Started 15:08  
 (C) First Final Flow 23  Safety Joint \_\_\_\_\_ T-Open 17:32  
 (D) Initial Shut-In 562  Circ Sub \_\_\_\_\_ T-Pulled 19:32  
 (E) Second Initial Flow 22  Hourly Standby \_\_\_\_\_ T-Out 21:09  
 (F) Second Final Flow 29  Mileage 112 R/T 173.60 Comments \_\_\_\_\_  
 (G) Final Shut-In 701  Sampler \_\_\_\_\_  
 (H) Final Hydrostatic 1669  Straddle \_\_\_\_\_  Ruined Shale Packer \_\_\_\_\_  
 Shale Packer 250  Ruined Packer \_\_\_\_\_  
 Extra Packer \_\_\_\_\_  Extra Copies \_\_\_\_\_  
 Initial Open 30  Extra Recorder \_\_\_\_\_ Sub Total 0  
 Initial Shut-In 30  Day Standby \_\_\_\_\_ Total 1573.60  
 Final Flow 30  Accessibility \_\_\_\_\_ MP/DST Disc't X  
 Final Shut-In 30 Sub Total 1573.60

Approved By \_\_\_\_\_ Our Representative [Signature]  
 Trilobite Testing Inc. shall not be liable for damaged of any kind of the property or personnel of the one for whom a test is made, or for any loss suffered or sustained, directly or indirectly, through the use of its equipment, or its statements of opinion concerning the results of any test, tools lost or damaged in the hole shall be paid for at cost by the party for whom the test is made.



# TRILOBITE TESTING INC.

1515 Commerce Parkway • Hays, Kansas 67601

## Test Ticket

NO. 55831

Well Name & No. Baxter/Miller #29-1 Test No. 6 Date 11-12-13  
 Company Coral Production Corp Elevation 2079 KB 2071 GL  
 Address 1600 Stout St STE 500 Denver, CO 80202  
 Co. Rep / Geo. Pete Dehenham Rig Maverick #108  
 Location: Sec. 29 Twp. 6S Rge. 19W Co. Rooks State KS

Interval Tested 3490 3571 Zone Tested Arbuckle  
 Anchor Length 81 Drill Pipe Run 3441 Mud Wt. 9.10  
 Top Packer Depth 3486 Drill Collars Run 29 Vis 59  
 Bottom Packer Depth 3490 Wt. Pipe Run 0 WL 7.2  
 Total Depth 3571 Chlorides 500 ppm System LCM #

Blow Description Weak surface blow built to lin  
Dead no blow back  
Dead no blow  
Dead no blow back

| Rec | Feet of | %gas | %oil | %water | %mud |
|-----|---------|------|------|--------|------|
|     |         |      |      |        |      |
|     |         |      |      |        |      |
|     |         |      |      |        |      |
|     |         |      |      |        |      |

Rec Total 10 BHT \_\_\_\_\_ Gravity \_\_\_\_\_ API RW \_\_\_\_\_ @ \_\_\_\_\_ ° F Chlorides \_\_\_\_\_ ppm

(A) Initial Hydrostatic 1761  Test 1150 T-On Location 0605  
 (B) First Initial Flow 22  Jars \_\_\_\_\_ T-Started 0648  
 (C) First Final Flow 24  Safety Joint \_\_\_\_\_ T-Open 08:56  
 (D) Initial Shut-In 64  Circ Sub \_\_\_\_\_ T-Pulled 10:56  
 (E) Second Initial Flow 24  Hourly Standby \_\_\_\_\_ T-Out 12:30  
 (F) Second Final Flow 26  Mileage 112 X 2 347.20 Comments Lead  
 (G) Final Shut-In 45  Sampler \_\_\_\_\_ 23:30  
 (H) Final Hydrostatic 1756  Straddle \_\_\_\_\_  Ruined Shale Packer \_\_\_\_\_

Initial Open 30  Shale Packer 250  Ruined Packer \_\_\_\_\_  
 Initial Shut-In 30  Extra Packer \_\_\_\_\_  Extra Copies \_\_\_\_\_  
 Final Flow 30  Extra Recorder \_\_\_\_\_ Sub Total 0  
 Final Shut-In 30  Day Standby \_\_\_\_\_ Total 1747.20  
 Accessibility \_\_\_\_\_ MP/DST Disc't \_\_\_\_\_  
 Sub Total 1747.20

Approved By \_\_\_\_\_ Our Representative [Signature]  
 Trilobite Testing Inc. shall not be liable for damaged of any kind of the property or personnel of the one for whom a test is made, or for any loss suffered or sustained, directly or indirectly, through the use of its equipment, or its statements or opinion concerning the results of any test, tools lost or damaged in the hole shall be paid for at cost by the party for whom the test is made.